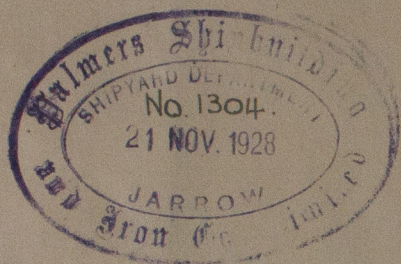
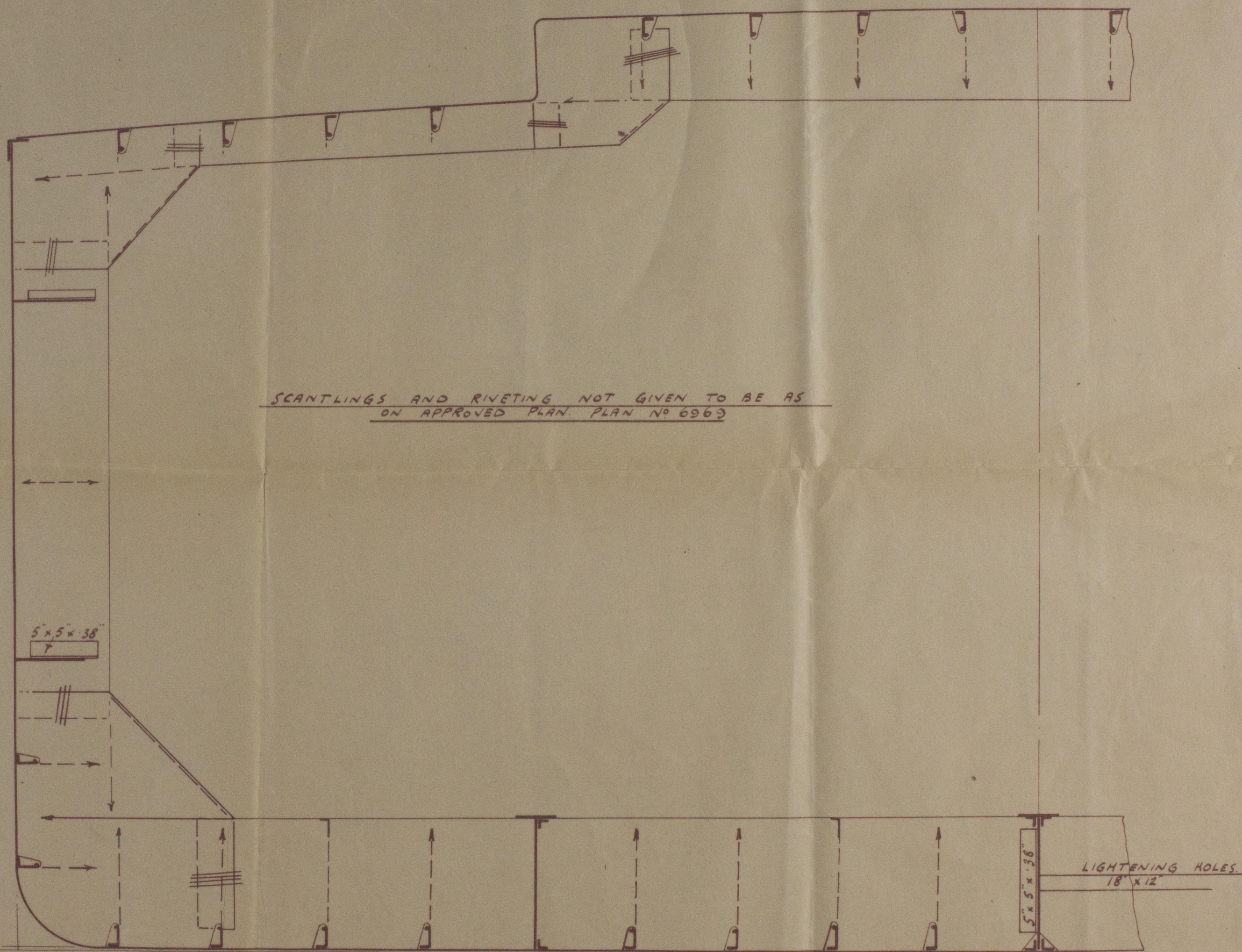


FOR ENCLOSURE TO 21/11/28
 Lloyds Register of Shipping
 from PALMERS S. & I. CO., Ltd.,
 Shipyard Department,
 JARROW-ON-TYNE.
 W1060-0222 1/2

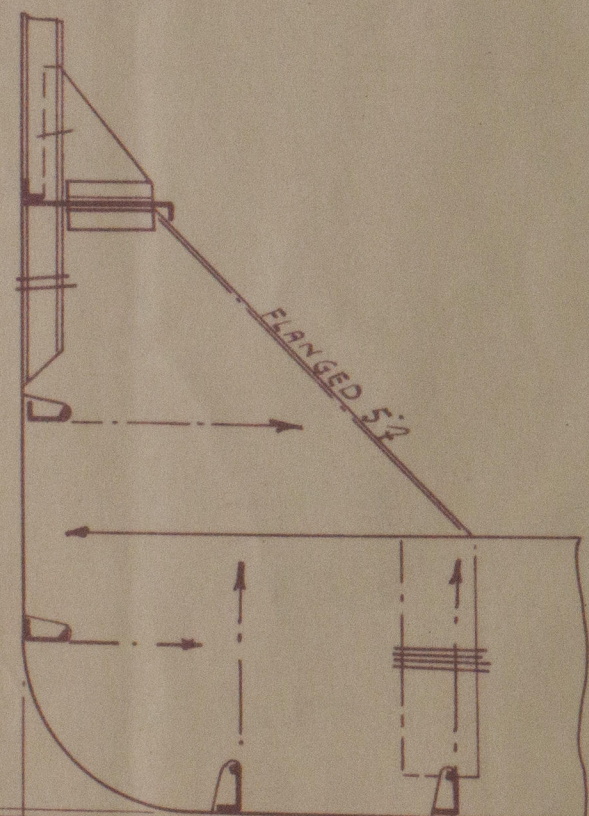


- N° 989 SHIP -
 OUTLINE MIDSHIP SECTION SHEWING
 ALTERNATIVE ARRANGEMENTS
 DIMENSIONS L.B.P 290'-0" x 49'-0" BRD M^{LD} x 19'-6" DPTTH M^{LD}
 SCALE 1/2" = 1 FOOT
 ISHERWOOD COMBINATION SYSTEM.

Copy of approved plan
 G.H.B.



SCANTLINGS AND RIVETING NOT GIVEN TO BE AS
 ON APPROVED PLAN PLAN N° 6963



SECTION IN WAY OF INTERMEDIATE
 BOTTOM TRANSVERSE

Signed W. J.
 17. 11. 28

MESSRS. PALMERS S & I CO. LTD.
 HEBBURN-ON-TYNE
 ISHERWOOD N° 1594 PLAN N° 7002
 16. 11. 28

SIR JOSEPH W. ISHERWOOD & CO. LTD.,
 4, LLOYDS AVENUE,
 LONDON, E.C.3.
 FOR ENCLOSURE TO
 DATE 20. 11. 28

3

Palmer 989

outline mid section showing
modifications from 1st approved.

S. S. Stanasfalt

NEWCASTLE ON TYNE.

Report No. 84062.

Palmer

989

RETAIN

W1060-0222



© 2020

Lloyd's Register
Foundation