

24/11/15

MARINE BOILER 13'-6" DIA. x 10'-6" LONG

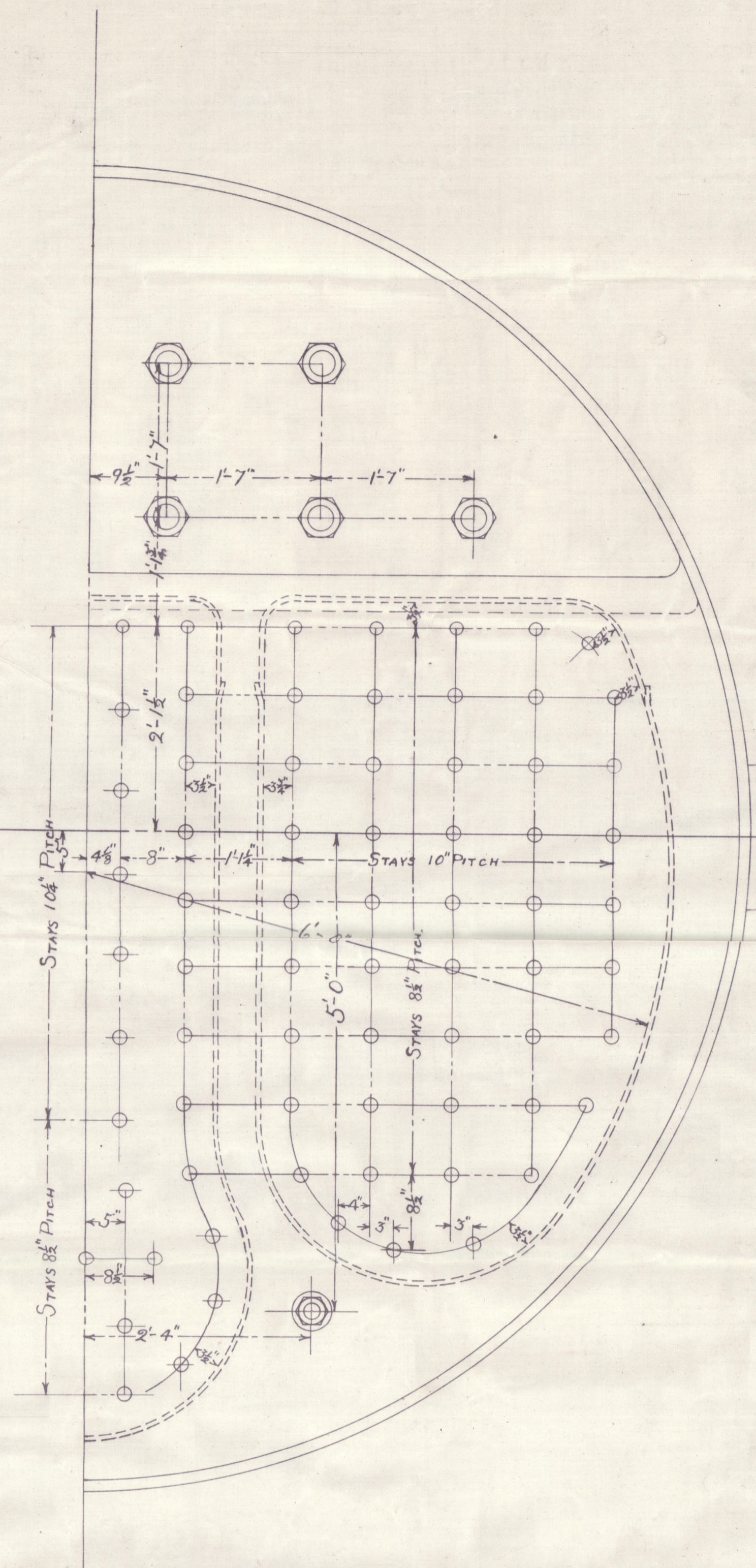
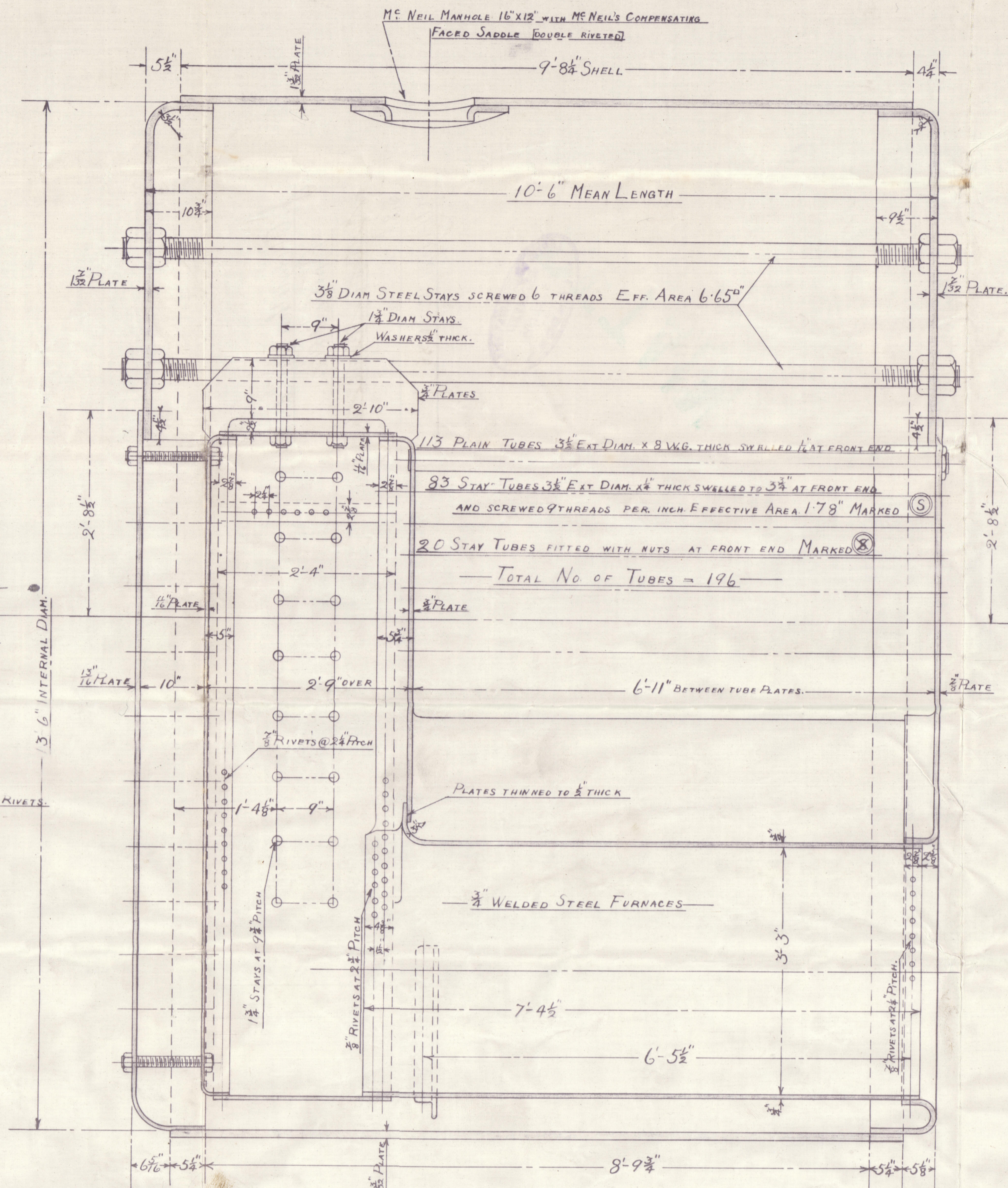
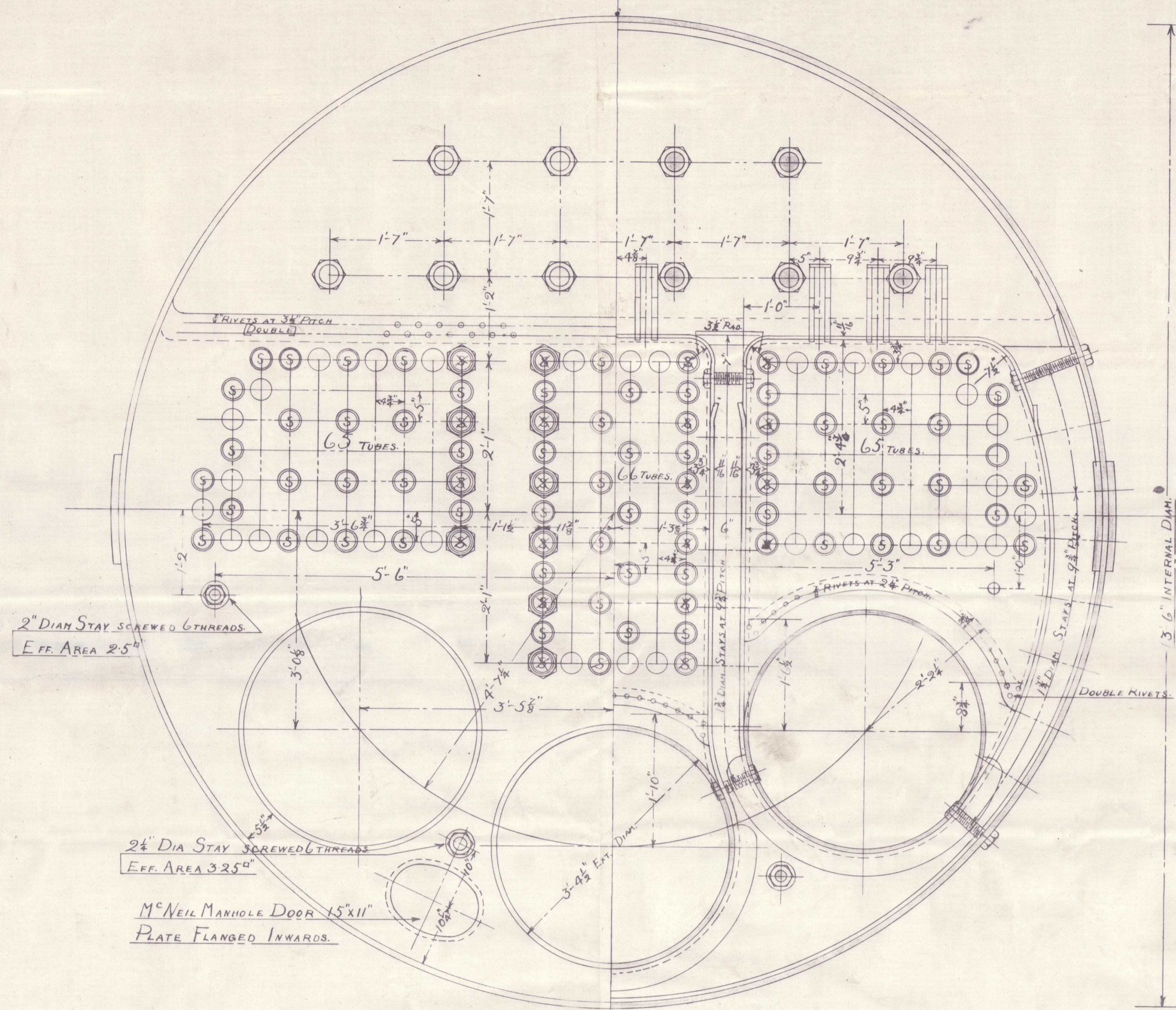
WORKING PRESS. 180 LBS. PER SQ. INCH

TO LLOYDS REQUIREMENTS.

ALL PLATES RIVETS & STAYS OF SIEMENS MARTIN MILD STEEL
TUBES OF IRON.

LIMITS OF TENSILE STRENGTH.

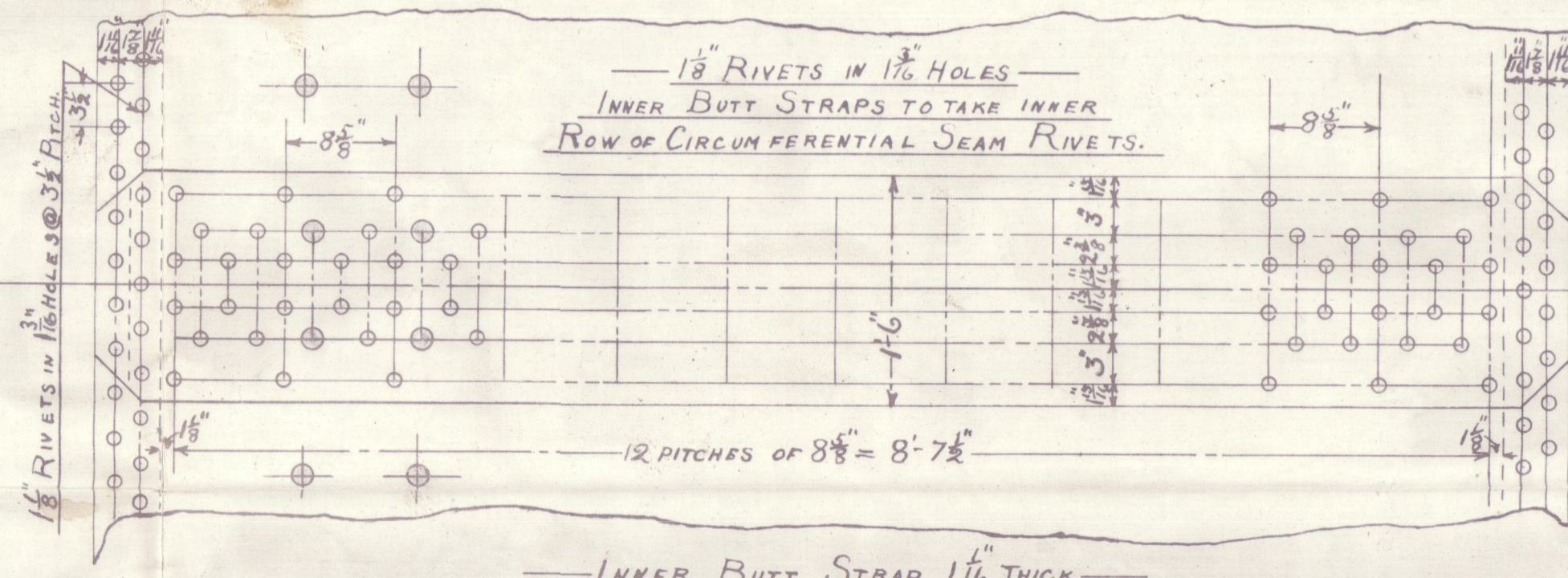
SHELL BUTT STRAPS & GIRDERS.	28-32 TONS
OTHER PLATES.	26-30 "
FURNACES.	26-30 "
MAIN STAYS.	28-32 "
SCREWED STAYS & RIVET BARS	26-30 "



ALL CC. STAYS 1 1/2" DIA. SCREWED 10 THREADS PER INCH EFF. AREA. 2.06 sq. INCHES
SCREWED THROUGH BOTH PLATES AND NUTS FITTED AT EACH END.

HEATING SURFACES.	
TUBES	1240 sq. ft.
CC. TOP & SIDES	113 sq. ft.
CC. BACKS	60 sq. ft.
CC. TUBE PLATES	34 sq. ft.
FURNACES	103 sq. ft.
TOTAL	1550 sq. ft.
GRATE AREA (5'-0" BARS)	48.75 sq. ft.

	P-D x 100	3'-62.5 - 1'-187 x 100		
LONGITUDINAL	P x 1	8'-62.5	PLATE	86.2%
SEAM	N x A x 1'-75 x 85	5 x 1107 x 1'-75 x 85	RIVETS	87.2%
	P x T	8'-62.5 x 1'-09.5		
SHELL	1 1/2" THICK	22 x 13.5 x 86.21		181 LBS.
	13'-6" INT. DIA.	162		
END PLATES (IN STEAM SPACE)	PLATE 1 1/2"	175 x 380.25		184 LBS.
	3 1/2" DIA. AREA 6.65	361		
MAIN STAYS	PITCH 1'-7 x 1'-7	104.00 x 6'-6.5		192 LBS.
WIDE SPACE BETWEEN NESTS OF TUBES	PLATE 3/8"	170 x 149		182 LBS.
	TUBE CENTRES 1'-1 1/2"	182.25		
WIDE SPACE BETWEEN CC. BACKS	PLATE 1 1/2"	135 x 169		184 LBS.
	PLATE 1 1/2" STAYS 13 1/2" x 8 1/2"	135 x 121		185 LBS.
CC. TOPS & SIDES	PLATE 1 1/2"	135 x 121		185 LBS.
	STAYS 9 1/2" x 9"	135 x 121		185 LBS.
CC. BACKS	PLATE 1 1/2"	135 x 121		185 LBS.
	STAYS 8 1/2" x 10 1/2"	135 x 121		185 LBS.
GIRDERS	2 1/2" PLATES 9" DEEP	106.60 x 81 x 15		186 LBS.
	22.57 x 9.75 x 31.57			
FURNACES	1 1/2" THICK	50 (22.5 - 77.5)		182 LBS.
	LENGTH - 6'-5 1/2"	40.5		
CC. TOP & SIDE STAYS	PITCH 9" x 9"	900 x 2.06		211 LBS.
	1 1/2" DIA.	900 x 2.06		
CC. BACK STAYS	PITCH 8 1/2" x 10	900 x 2.06		218 LBS.
	1 1/2" DIA.	900 x 2.06		
CC. BACK MARGINAL STAYS	PITCH 11'-62.5 x 8.5	11-62.5 x 8.5		187 LBS.



INNER BUTT STRAP 1 1/2" THICK.
OUTER BUTT STRAP 1 1/2" THICK.

SCALE 1 INCH = 1 FOOT

Paul
24.11.15
J.P.R.

JOB NOS	
899	1 (OFF)



J. Abernethy & Co. Ltd.

Boiler No 899.

for ~~Bethie~~ ~~Boiler~~ S. B. No 436.

S.S. "

Abusep No 12155



Amir
Santa Ana Martin

© 2020

Lloyd's Register
Foundation

W1060-0096