

81.26

SCALE $\frac{1}{2}$ INCH = ONE FOOT.

DIMENSIONS

LENGTH B.P. 385' - 0"
BREADTH MLD. 53' - 6"
DEPTH MLD. TO UPPER DECK 38' - 0"
LOAD DRAFT

LLOYDS 100 A.I. WITH FREEBOARD (COMPLETE
SUPERSTRUCTURE VESSEL WITH TONNAGE OPENING)

LLOYDS NUMERALS

B	53.5
D	38.0
(B+D)	91.5
L (B+D)	35227.5
L x D	14630.0
d to 3 RD DECK	18.42
to UPPER DECK	10.13

EQUIPMENT NOS

L. (B. + D.)	35227.5
HOUSES	1255.5
	<u>36483.0</u>

EQUIPMENT

3 BOWER ANCHORS
 2 @ 60 CWT. EACH STOCKLESS
 1 @ 62 CWT. EACH STOCKLESS
 COLLECTIVE WEIGHTS 182 CWTs.
STREAM ANCHOR 17 1/2 CWTs. EX. STOCK
270 FATHOMS 2 1/2" STUD LINK CABLE
 90 " 4 3/4" STEEL WIRE STREAM LINE
 120 " 5 " " " TOW LINE
 2 @ 90 " 2 3/4" " " HAWSEARS
 2 @ 90 " 2 1/2" " " WARPS.

RIVETING.

BUTTS KEEL PLATE QUADRUPLE FOR ½ L. TREBLE AT ENDS. *Buttstrake*

SHELL SHEERSTRAKE & STRAKE BELOW QUADRUPLE FOR ½ L.

TREBLE AT ENDS.

BOTTOM PLATING. TREBLE THROUGHOUT. ✓

SIDE SHELL. TREBLE THROUGHOUT.

BRIDGE SIDE PLATING. DOUBLE THROUGHOUT.

BRIDGE DECK SINGLE THROUGHOUT.

UPPER DECK STRINGER TREBLE THROUGHOUT.

PLATING DOUBLE FOR ½ L. SINGLE AT ENDS.

OTHER DECKS STRINGERS DOUBLE THROUGHOUT.

PLATING DOUBLE FOR ½ L. SINGLE AT ENDS.

INNER BOTTOM CENTRE GIRDER TREBLE THROUGHOUT.

MARGIN. TREBLE THROUGHOUT.

CENTRE STRAKE. TREBLE FOR ½ L. DOUBLE AT ENDS.

PLATING DOUBLE FOR ½ L. SINGLE AT ENDS.

SEAMS SHELL DOUBLE THROUGHOUT. ✓

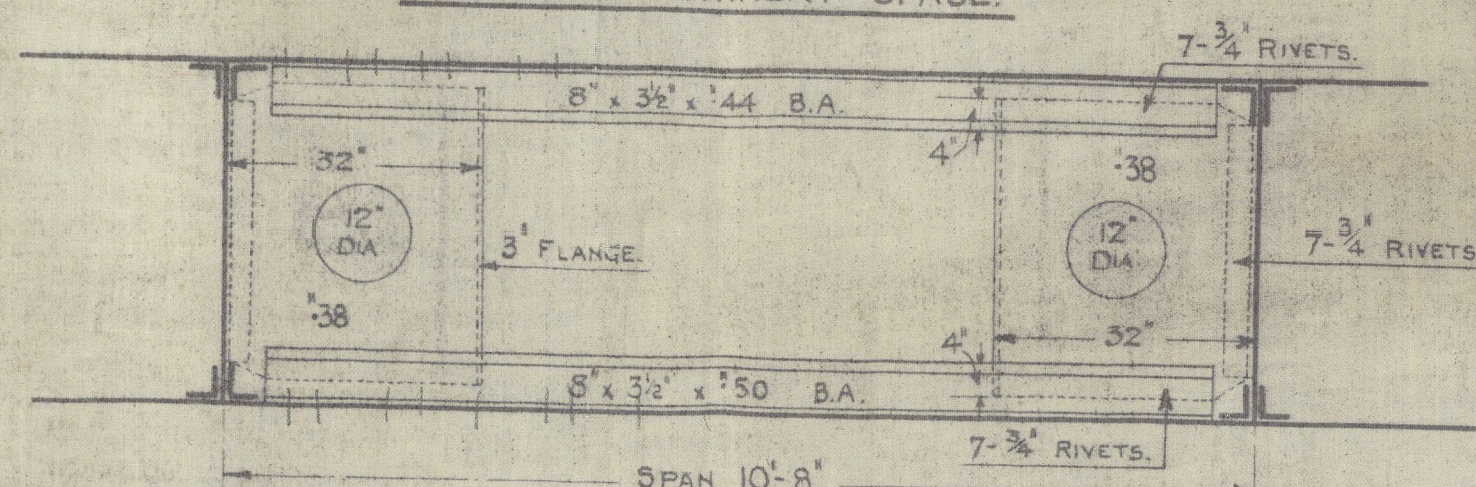
BRIDGE SIDE SINGLE.

DECKS SINGLE THROUGHOUT.

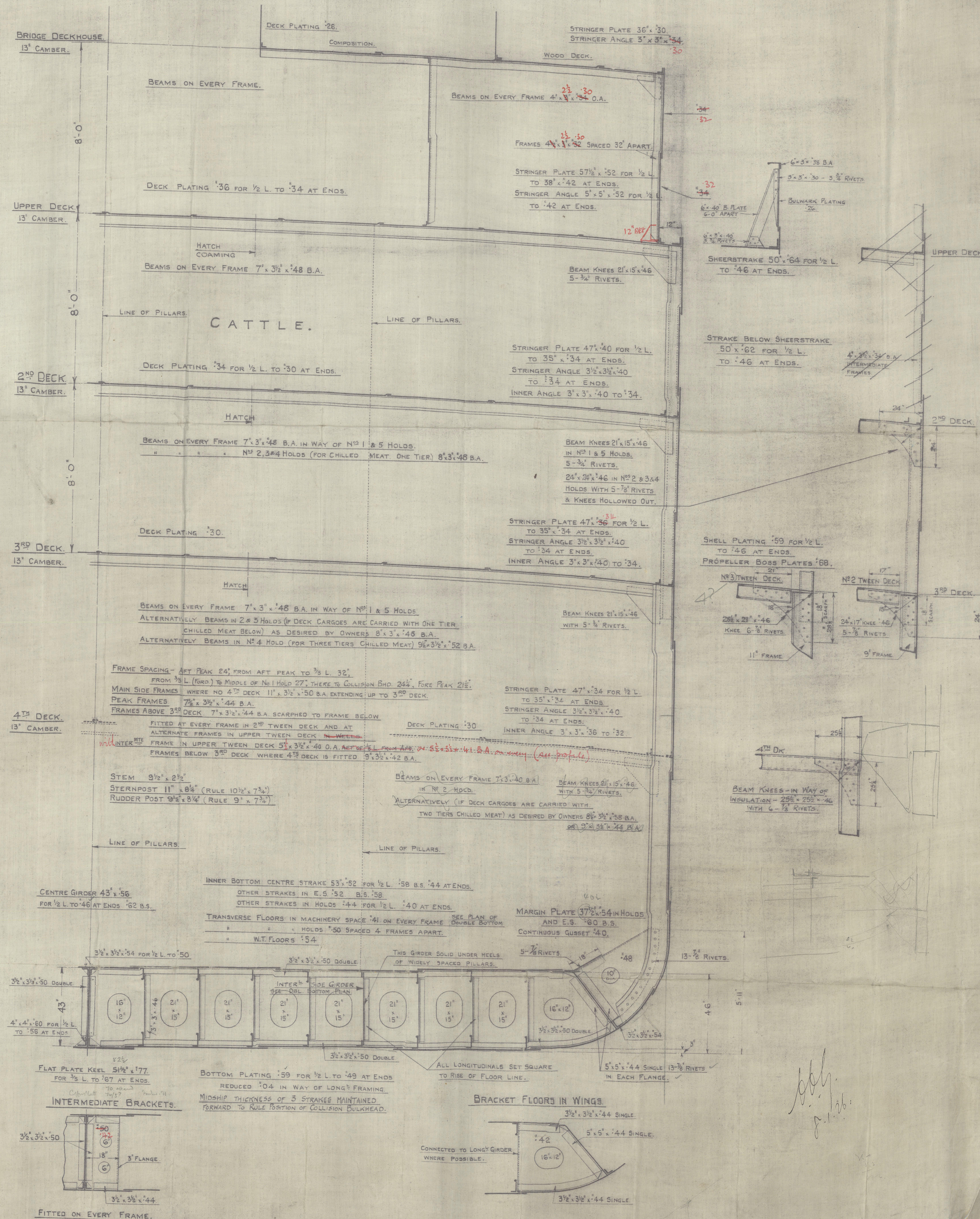
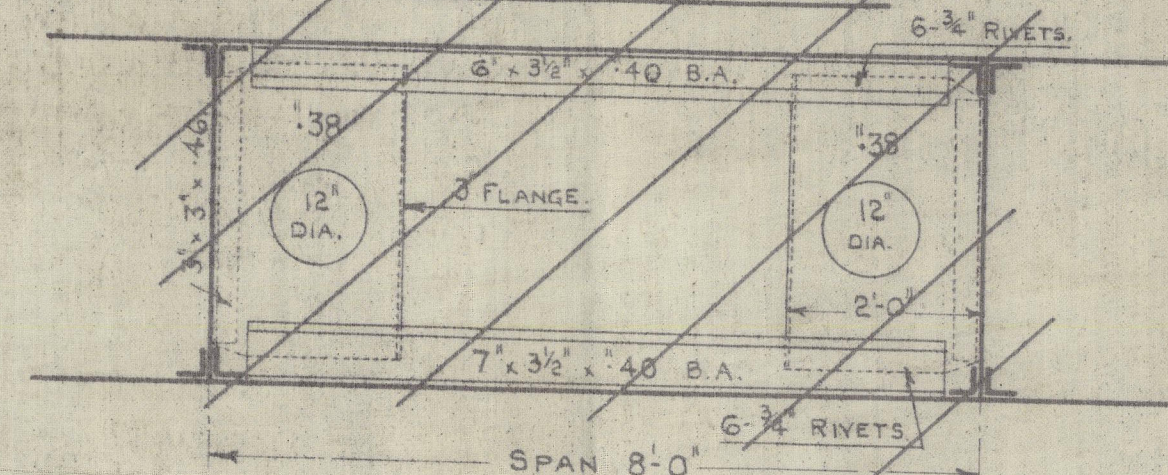
INNER BOTTOM DOUBLE IN ER } DOUBLE IN WAY OR OIL FUEL

SINGLE ELSEWHERE.

ELEVATION OF LONG FRAME GIRDERS
OUTSIDE MACHINERY SPACE.



~~ELEVATION OF LONG FRAME GIRDERS
INSIDE MACHINERY SPACE~~



Licken Ld. nos. 626-Modauia

Amended Midships Section



Banow Rkr No 2227

W106-0214



© 2021

Lloyd's Register
Foundation