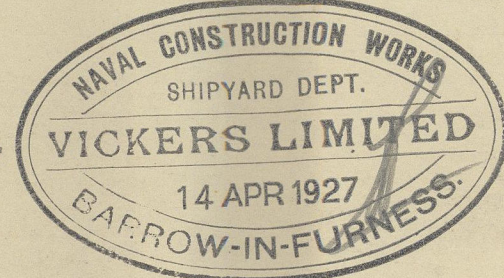


M. V. "MODAVIA".

MIDSHIP SECTION.



SCALE $\frac{1}{2}$ INCH = ONE FOOT.

DIMENSIONS.	LENGTH B.P.	385' - 0"
	BREADTH MLD.	53' - 6"
	DEPTH MLD. TO UPPER DECK.	38' - 0"

LLOYDS 100 A.I. WITH FREEBOARD. (COMPLETE SUPERSTRUCTURE)
VESSEL WITH TONNAGE OPENING.

LLOYDS NUMERALS.	EQUIPMENT N°
B.	53.5
D.	38.0
(B+D)	91.5
L (B+D)	35227.5
L x D.	14630.0
d to 3 rd DECK.	18.42
$\frac{1}{2}$ to UPPER DECK.	10.13

EQUIPMENT.

L (B+D)	35227.5	3 BOWER ANCHORS.
HOUSES.	1255.5	3 @ 60% CWT. EACH STOCKLESS.
	36483.0	

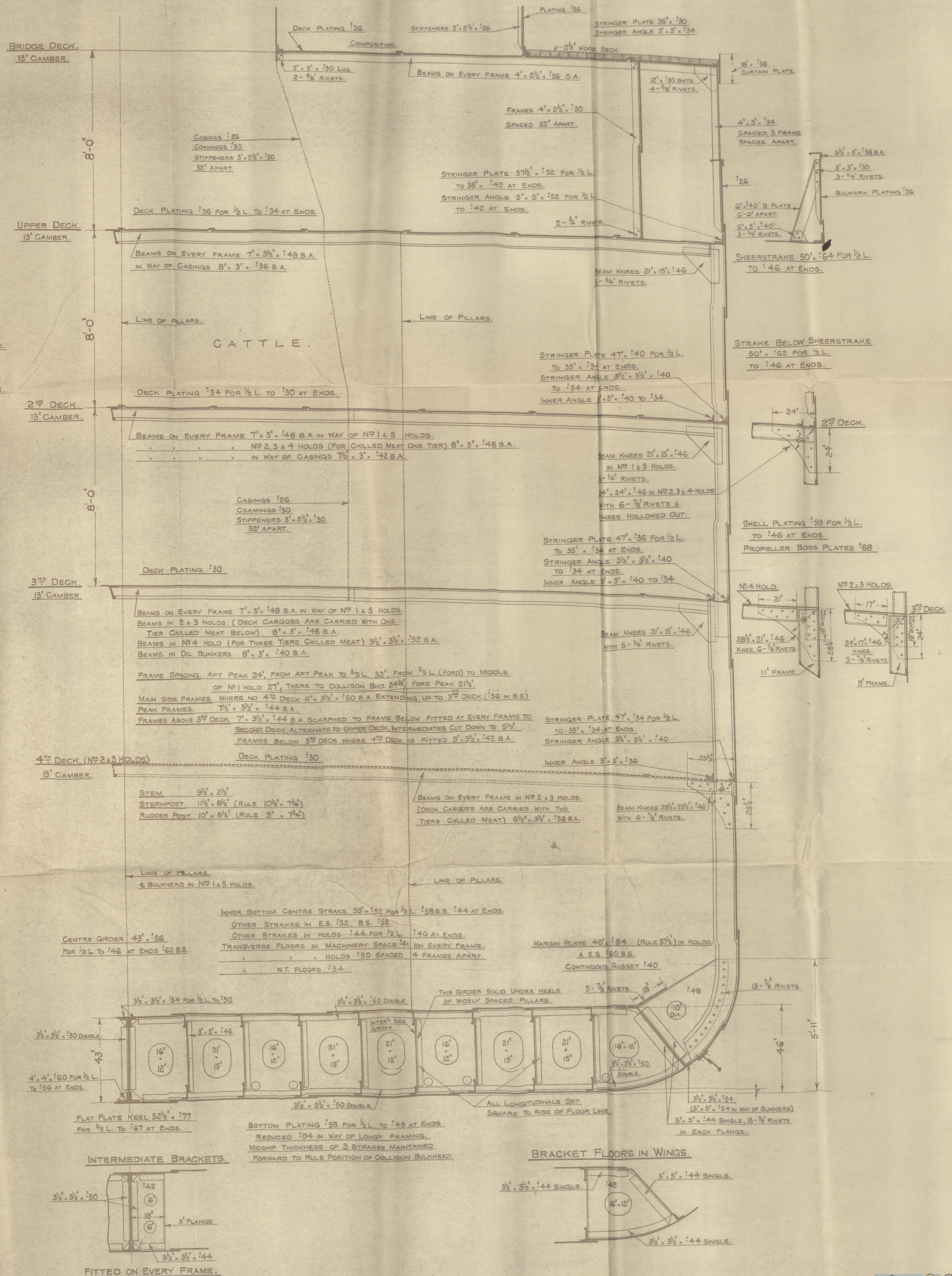
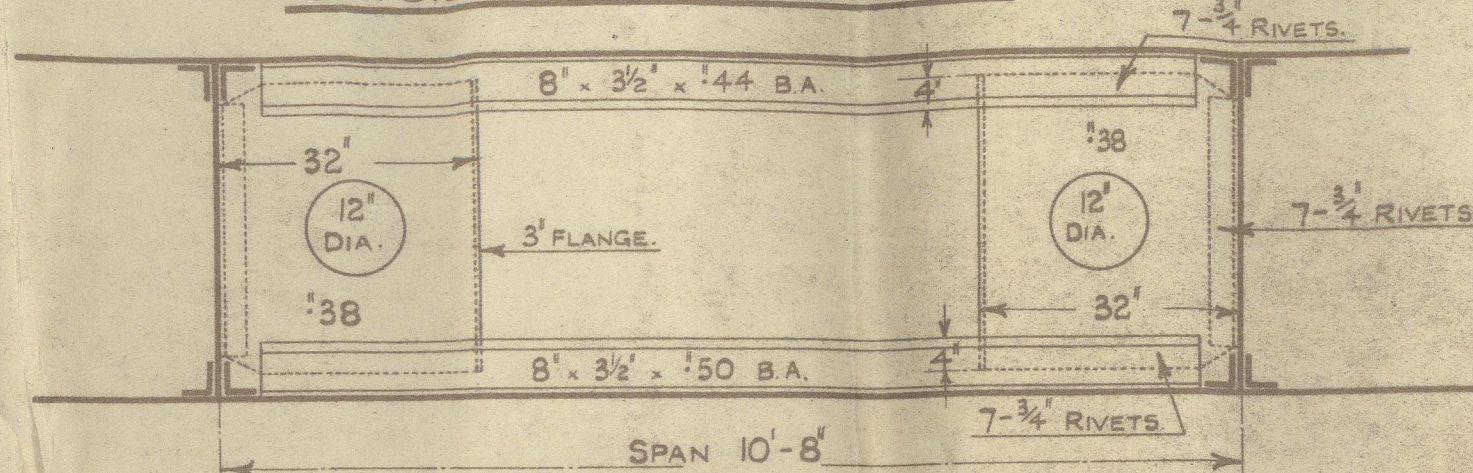
COLLECTIVE WEIGHTS 183 CWT.
STREAM ANCHOR. 17½ CWT. EX STOCK.
270 FATHOMS 2¼" STUD LINK CABLE.
90 4¼" STEEL WIRE STREAM LINE.
120 5" TOW LINE.
2 @ 30 2¼" HAWSERS.
2 @ 30 2½" WARPS.
4 @ 90 6" MANILLA HAULING LINES.

RIVETING.

BUTTS.	KEEL PLATE.	QUADRUPLE FOR ½ L. TREBLE AT ENDS.
	SHELL.	SHEERSTRAKE & STRAKE BELOW. QUADRUPLE FOR ½ L. TREBLE AT ENDS.
		BOTTOM PLATING. TREBLE THROUGHOUT.
(SIDE HOUSES)		SIDE SHELL. TREBLE THROUGHOUT.
	BRIDGE DECK.	SINGLE THROUGHOUT.
	UPPER DECK.	STRINGER. TREBLE THROUGHOUT.
		PLATING DOUBLE FOR ½ L. SINGLE AT ENDS.
	OTHER DECK.	STRINGERS DOUBLE THROUGHOUT.
		PLATING DOUBLE FOR ½ L. SINGLE AT ENDS.
	INNER BOTTOM.	CENTRE GIRDER. TREBLE THROUGHOUT.
		MARGIN. TREBLE THROUGHOUT.
		CENTRE STRAKE. TREBLE FOR ½ L. DOUBLE AT ENDS.
		PLATING DOUBLE FOR ½ L. SINGLE AT ENDS.
SEAMS.	SHELL.	DOUBLE THROUGHOUT.
	DECK.	SINGLE THROUGHOUT.
	INNER BOTTOM.	DOUBLE IN E.R. SINGLE ELSEWHERE.

ELEVATION OF LONG⁵ FRAME GIRDERS.

OUTSIDE MACHINERY SPACE.



M.V. MODAVIA

MESSRS VICKERS NO 626

Middle Section (as Built).

BRW D. E. Rpt No 2227



© 2021

Lloyd's Register
Foundation

W106-0213