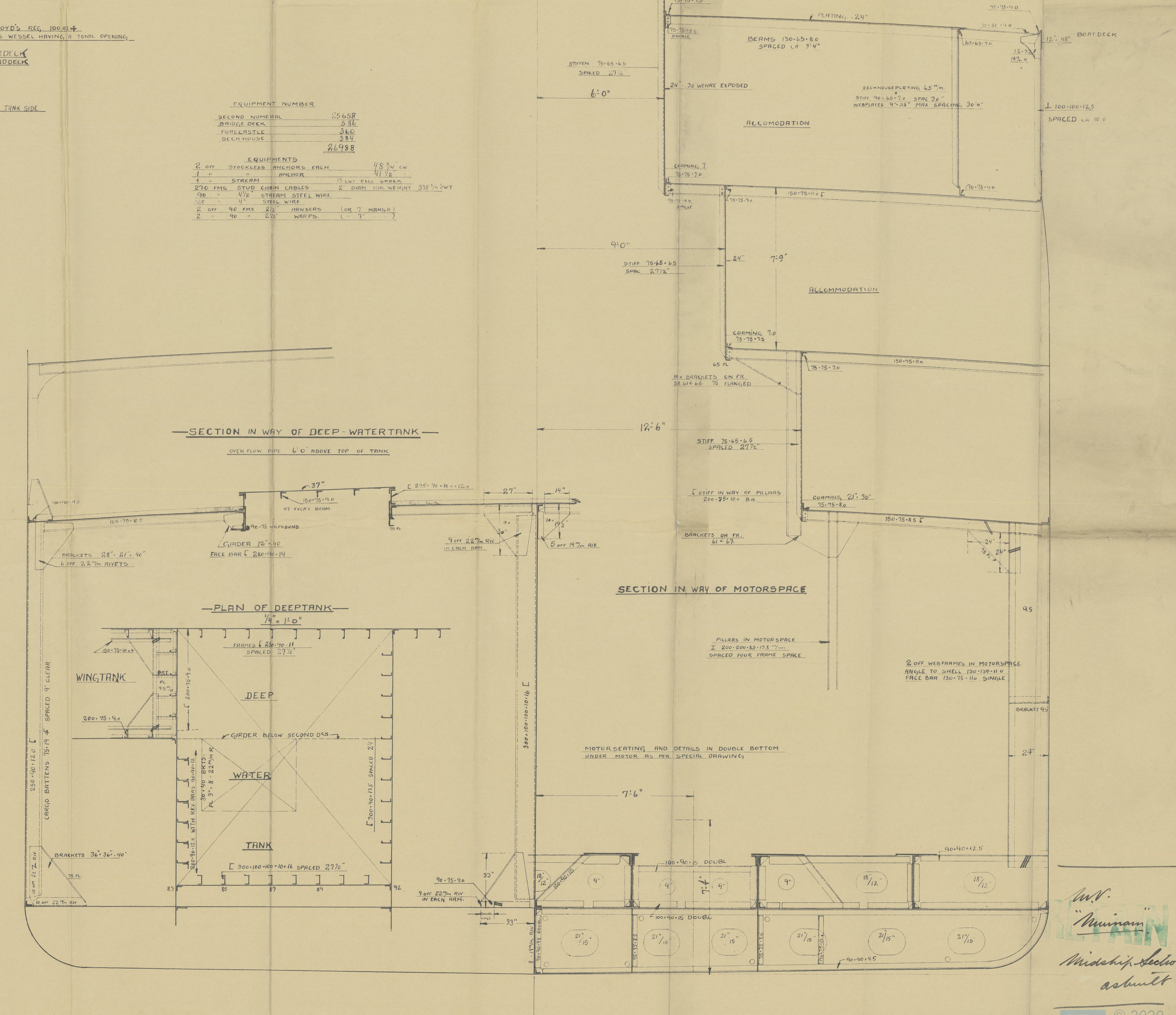


— SCALE: $\frac{1}{2}$ " - 1' 0" —

PASS AND GARGO MOTORSHIP TO CLASS: LLOYD'S REG 100A1 +
WITH A FREEBOARD CORRESPONDING TO A CSS VESSEL HAVING A TONN OPENING

L.D.	9935
L (B.D)	25822
L/D TO UPDCK.	11.4
D	18.20 WITH NORMAL TANK SIDE



a/s. NAKSKOV SKIBSVÆRFT
 DEN 18 JUNI 1931