

BOILERS No 896, 898, 899, 902, 903, 906, 907, 909, 911, 254

WORKING PRESSURE - 180 LBS PER SQ IN.

TO LLOYD'S SURVEY.

SCALES 1" = 1 1/2" = 1 FOOT.

3 BOILERS.

TO BE FITTED WITH HOWDEN'S SYSTEM OF FORCED DRAUGHT.

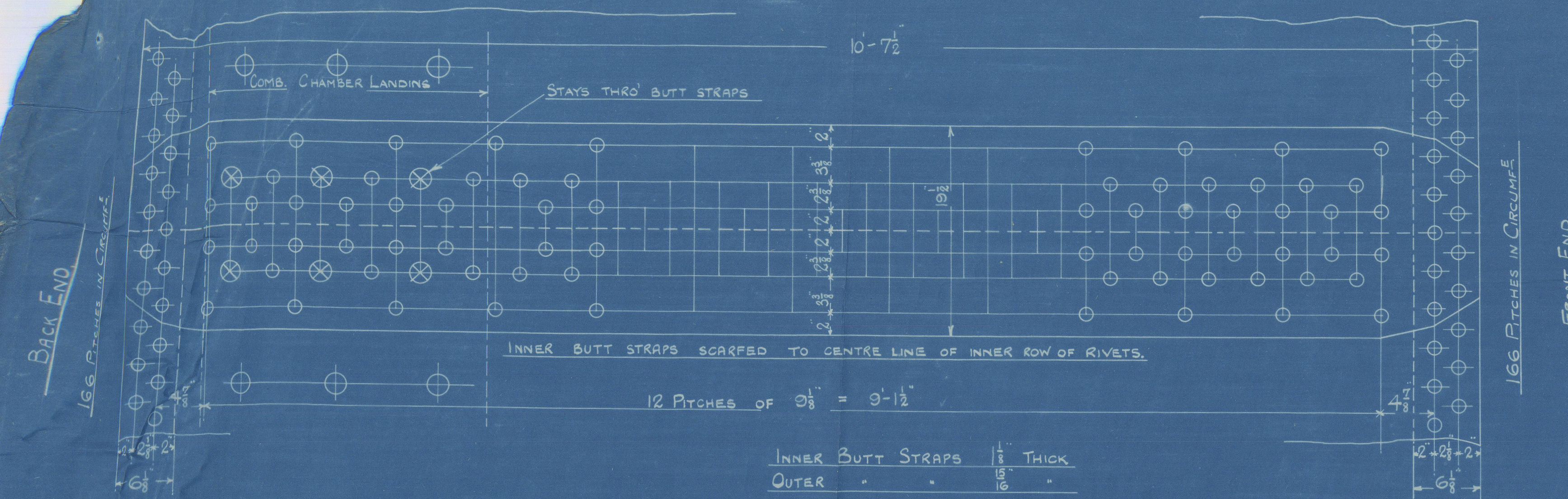
LIMITS OF TENSILE STRENGTH & MATERIAL.

SHELL PLATES, BUTT STRAPS & GIRDERS	28 TO 32 TONS	SIEMENS MARTIN MILD STEEL.
OTHER PLATES	26 " 30 "	
FURNACES	26 " 30 "	
MAIN STAYS	28 " 32 "	
SCREWED STAYS	26 " 30 "	
RIVET BARS	26 " 30 "	

CENTRAL MARINE ENGINE WORKS.
WEST BARTLETT.

PARTICULARS.

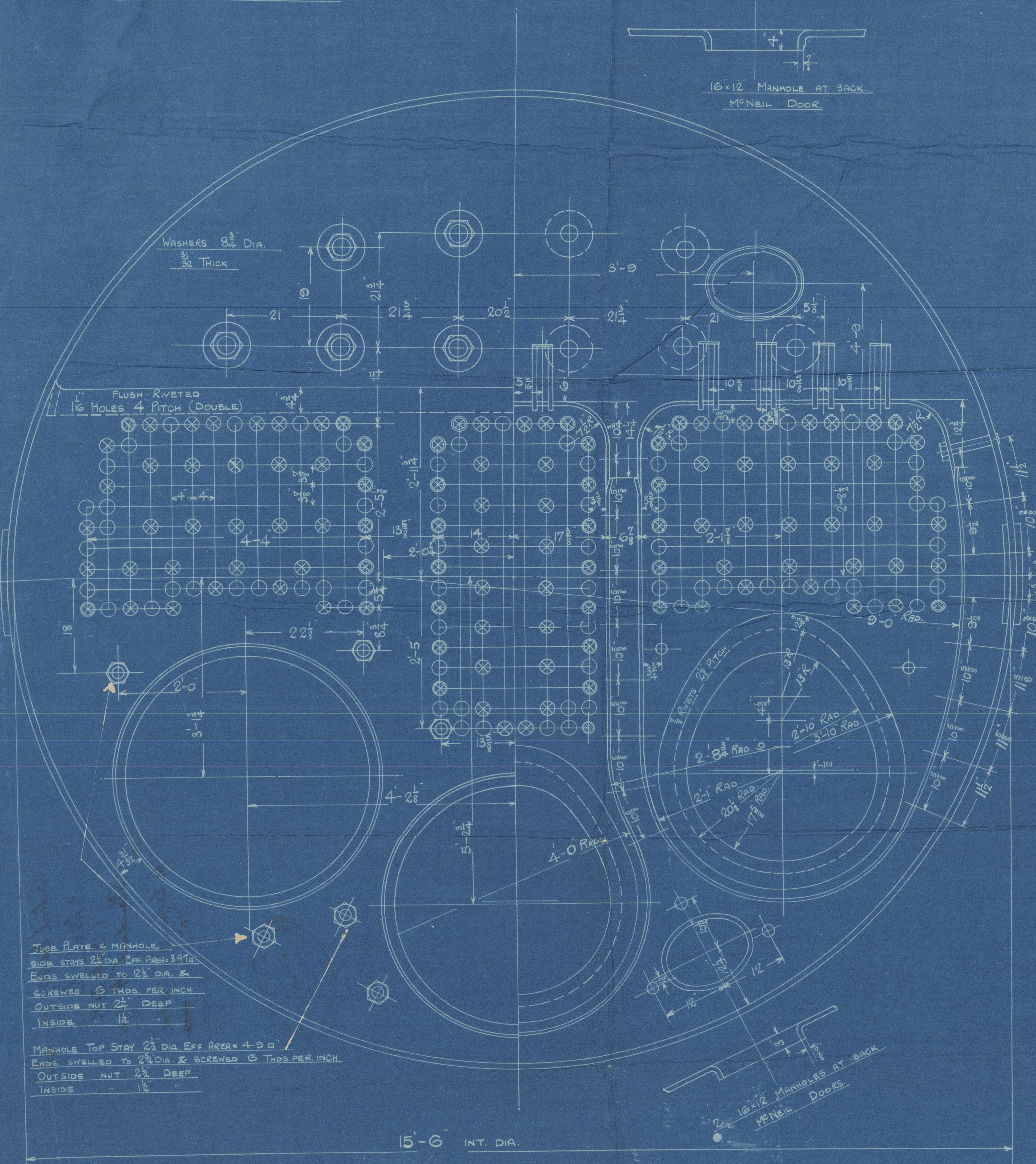
	1 BOILER	3 BOILERS
TUBES	2100 #	6300 #
COMB. CHAMBER TOP & SIDES	158 "	474 "
" " BACK	82 "	246 "
" " TUBE PLATE	55 "	165 "
FURNACES	161 "	483 "
TOTAL HEATING SURFACE	2550 #	7668 #
GRATE AREA (3'6" BARS)	63.3 #	190 #
TUBE AREA	11.65 "	34.95 "
WATER	160 "	480 "
STEAM SPACE	514 #	1542 #
GRATE AREA : HEATING SURFACE	1 : 40.4	
" " : TUBE	1 : 33.2	
" " : AREA	5.43 : 1	
" " : WATER	1 : 2.52	
" " : STEAM SPACE	1 : 8.1	
1/2 BOILER ABOVE COMB. CHAMBERS	32.2	
WEIGHT OF WATER	26 1/2 TONS	79 1/2 TONS



RIVETING

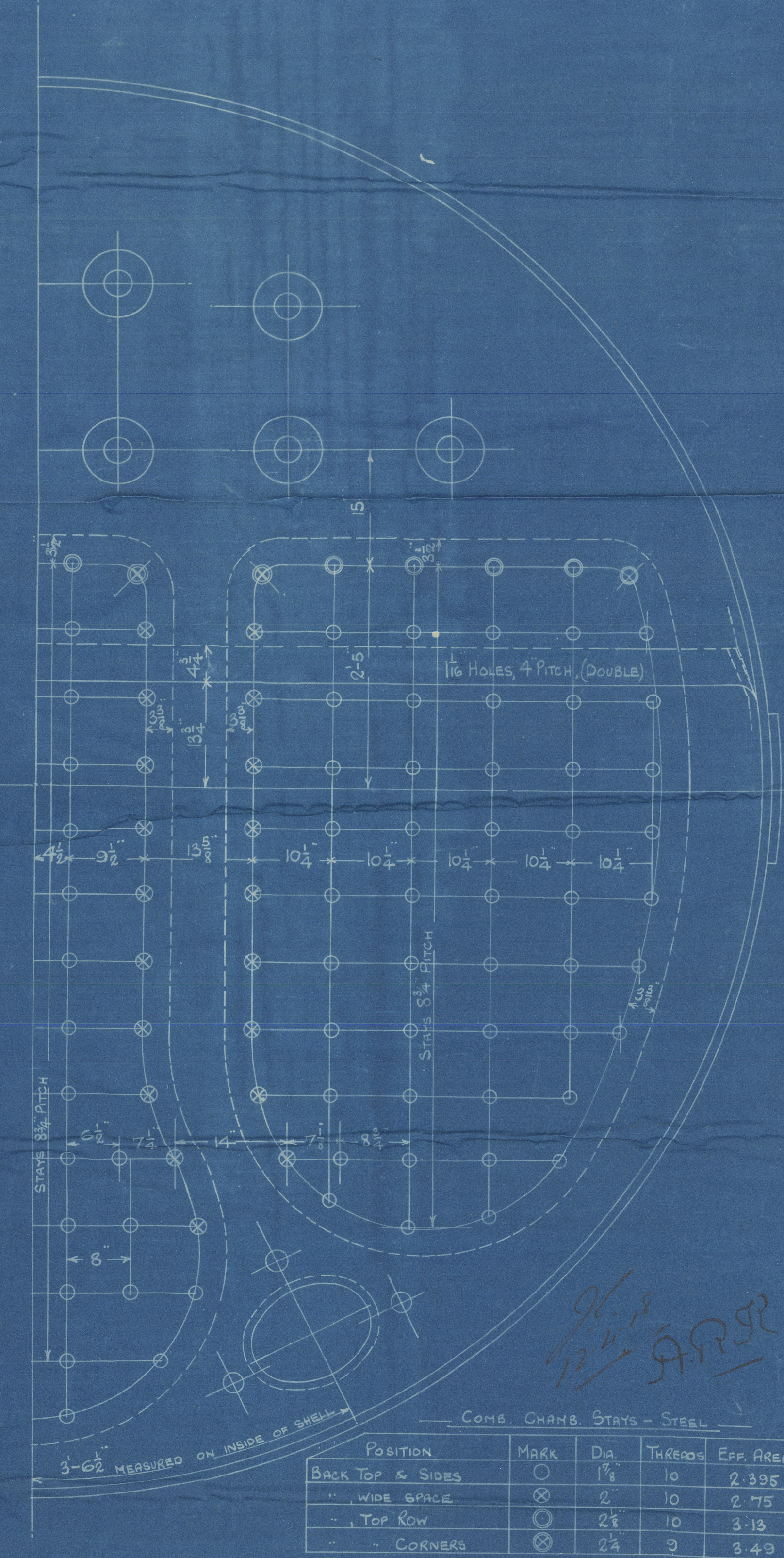
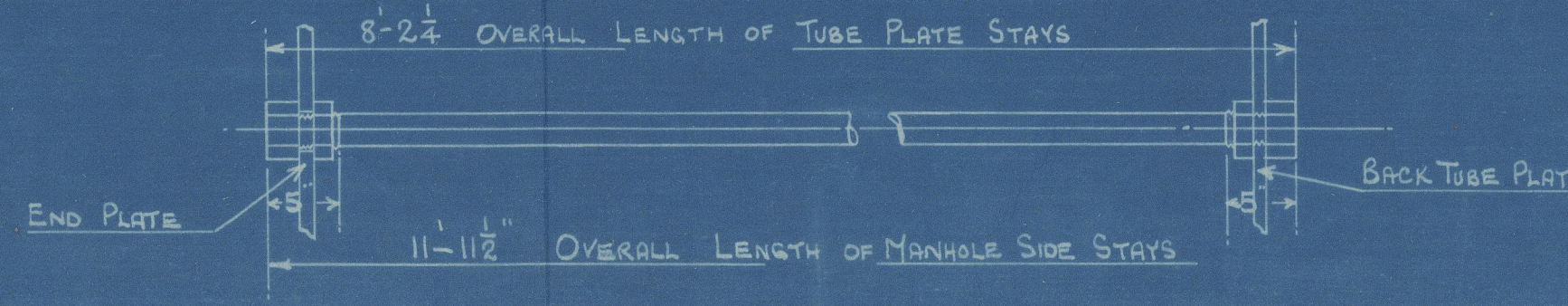
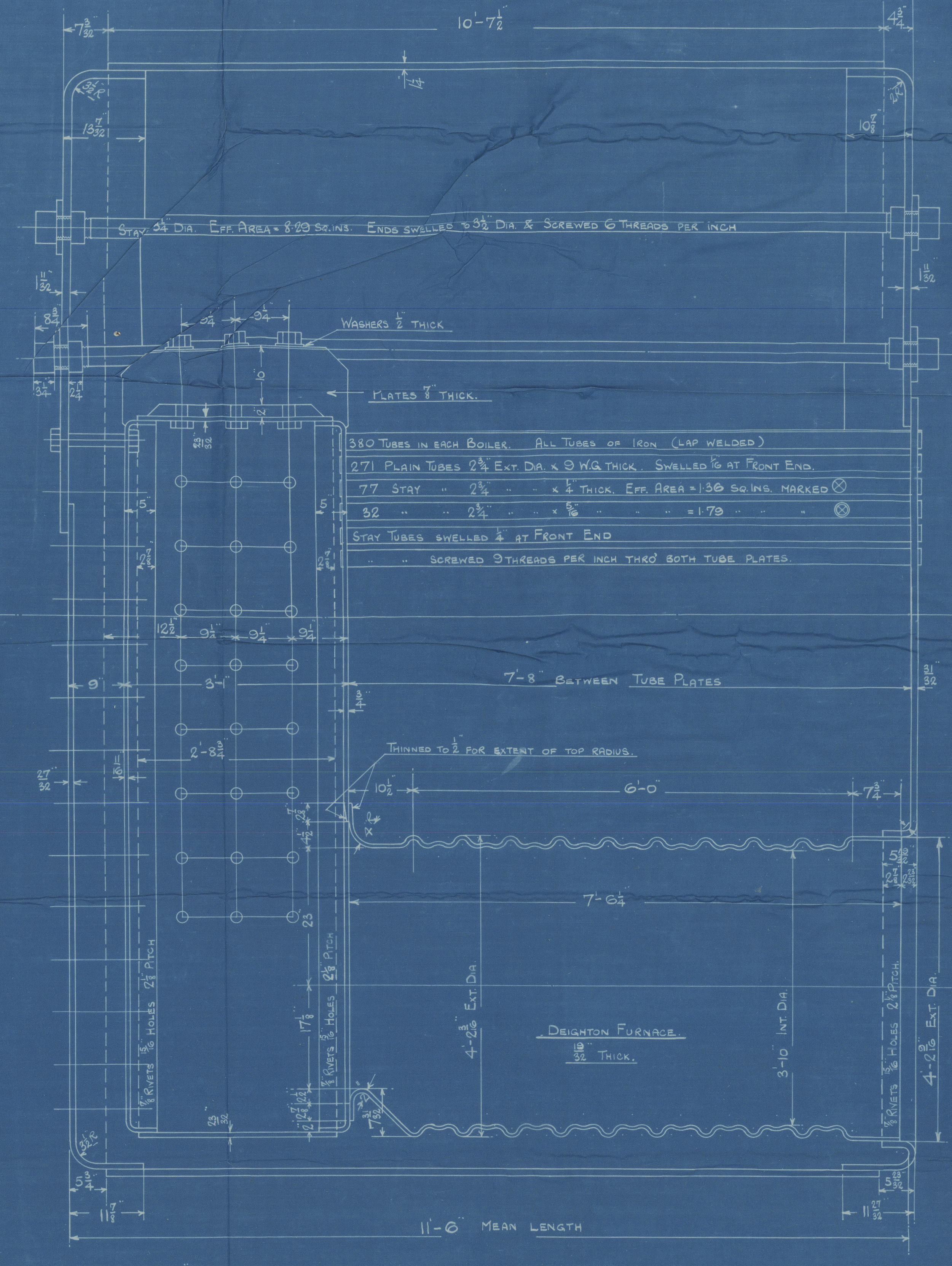
	LONG	FRONT END	BACK END
RIVET HOLE DIA.	1 1/8"	1 1/8"	1 1/8"
PITCH	9.125"	3.54"	3.54"
% PLATE	85.6	63	63
% RIVETS	88.3	51.9	51.9

ALL RIVET HOLES DRILLED IN PLACE.



TUBE PLATE & MANHOLE
SIDE STAYS 2 1/2" DIA. EFF. AREA 4.9 sq in.
ENDS SWELLED TO 2 1/2" DIA. & SCREWED 9 THREADS PER INCH OUTSIDE NUT 2 1/2" DEEP INSIDE.

MANHOLE TOP STAY 2 1/2" DIA. EFF. AREA 4.9 sq in.
ENDS SWELLED TO 2 1/2" DIA. & SCREWED 9 THREADS PER INCH OUTSIDE NUT 2 1/2" DEEP INSIDE.



COMB. CHAM. STAYS - STEEL

POSITION	MARK	DIA.	THREADS	EFF. AREA
BACK TOP & SIDES	○	1 1/8"	10	2.395 sq in.
" " WIDE SPACE	⊗	2"	10	2.75 sq in.
" " TOP ROW	○	2 1/8"	10	3.13 sq in.
" " CORNERS	⊗	2 1/4"	9	3.49 sq in.

ALL COMB. CHAM. STAYS SCREWED THRU BOTH PLATES & NUTTED AT EACH END EXCEPT STAYS FROM WING COMB. CHAM. TO SHELL WHICH PROTECT 1/2" FROM SHELL & ARE CAULKED.
ALL 1 1/8" NUTS 1 1/2" DEEP EXCEPT THOSE ON GIRDER TOPS WHICH ARE 1 1/2" DEEP.
ALL 2, 2 1/4, 2 1/2" NUTS 1 1/2" DEEP.

No 896, 898, 899, 902, 903, 906, 907, 909, 911, 254

CENTRAL MARINE ENGINE WORKS
28 MAR 1917
32156

Lloyd's Register
Foundation

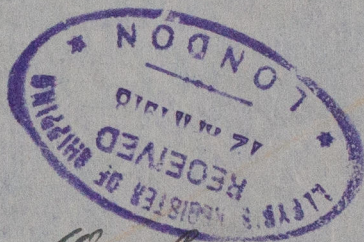
Central Nos. 907, 909, ~~908~~ ²⁵⁴

3 Main Boilers
(180 lbs. W.P.)

Standard "A" Type.

for W. Gray & Co's SS Nos.
907, 909, ~~908~~

& Craig, Taylor & Co's SS 212



²⁵⁴ S. Oak Linnet

W. H. Rht 15569.

RETAIN



© 2020

Lloyd's Register
Foundation

W1058-0135