

Office Copy

TOP OF HOUSES.

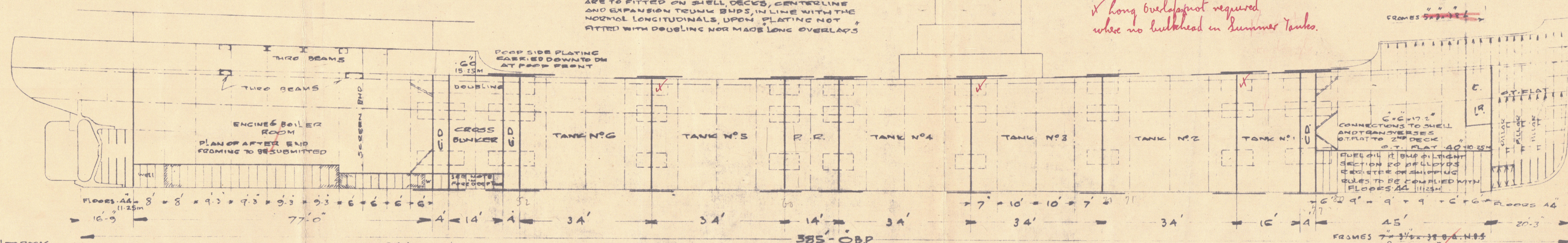
BEAMS 5x3.78G/L  
BEAMS FITTED TO ALTERNATE FRAMES.

POOP FRONT PLATING 40'-10.25M  
COAMING 44'-11.25M  
STIFFS 5'-3.54" x 5'-3.54" x 22.6" L.N.B.S. 150x90x11  
SPACED 30" APART.  
SPACED 24" APART IN WAY OF CASING, with 6x6 angle to deck.  
POOP SIDE PLATING 38'-15.50M

NOTE: IN CORRESPONDING LONG'S OF 6x3 1/2" x 15.5 ANGLES ARE TO BE FITTED ON BELL DECKS, CENTRELINE AND EXPANSION TRUNK BUDS, IN LINE WITH THE NORMAL LONGITUDINALS, UPON PLATING NOT FITTED WITH DOUBLING NOR MADE LONG OVERLAPS.

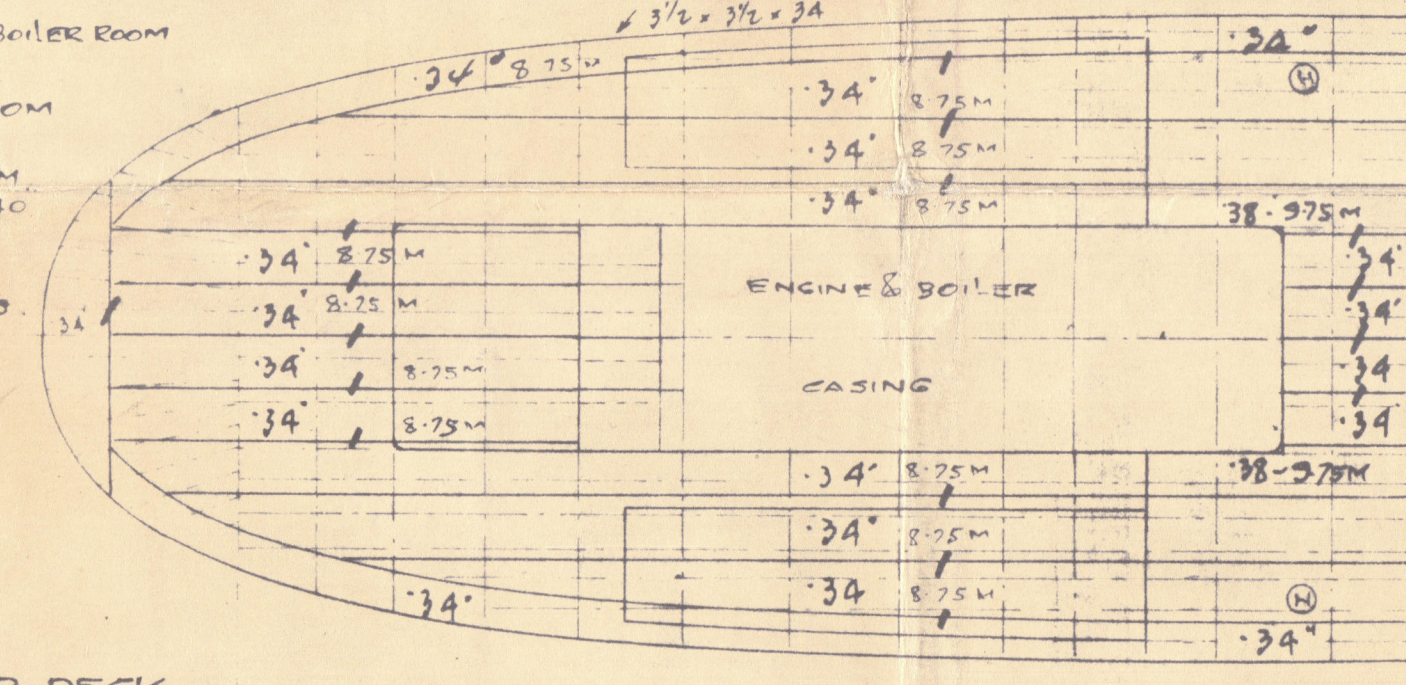
to start take  
X long overlap not required  
where no bulkhead in Summer Tank.

PELE SIDE PLATING 40'-10.25M  
FRAMES IN PELE 7'-3.54" x 22.6" L.N.B.S. 180x90x9



DOUBLE BOTTOM.  
CENTRE GIRDER 50'-12.75M  
" " " 60'-15.25M BOILER ROOM  
MARGIN PLATE 48'-12.25M  
" " " 58'-14.25M BOILER ROOM  
MIDDLE LINE STEAK 48'-12.25M  
" " " 50'-14.25M BOILER ROOM  
TANK TOP 48'-12.25M  
" " " 56'-14.25M BOILER ROOM  
FLOORS 38'-9.75M  
FLOORS 48'-12.25M BOILER ROOM  
FRAME & REV. FRAMES 3/4" x 3/4" x 40  
50" IN BOILER ROOM

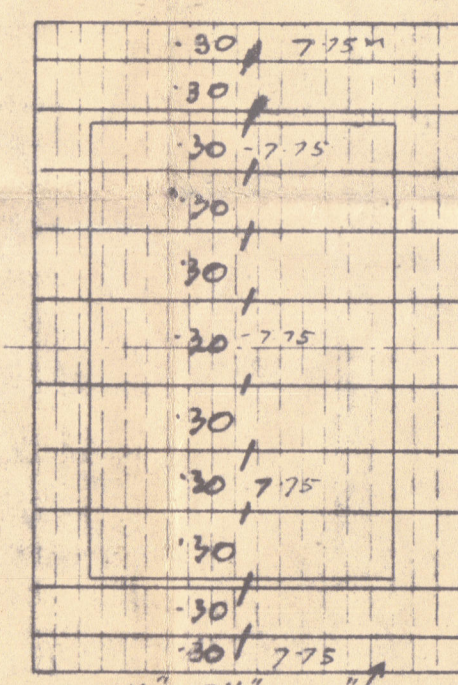
AFT PEAK FRAMES 9'-3.54" x 22.6" L.N.B.S. 180x90x9



POOP DECK

LONG'S 6'-3.54" x 22.6" L.N.B.S. 165x75x8/C

Amalgam thickness of plating  
extended into roof

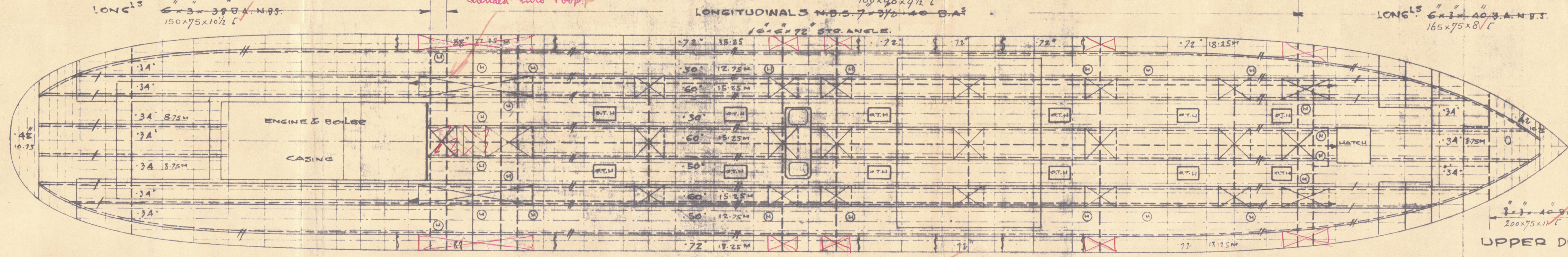


BRIDGE DECK 180x75x9 1/2" L  
BEAMS 7'-3.54" x 22.6" L.N.B.S. 2 ROWS OF PILLARS.

HOUSE FRONT PLATING 36'-9.25M  
COAMING 40'-10.25M  
STIFFS 7'-3.54" x 22.6" L.N.B.S. 180x90x9  
SPACED 30" APART.

FORECASTLE DECK  
BEAMS 8'-3.54" x 22.6" L.N.B.S. 2 ROWS OF PILLARS

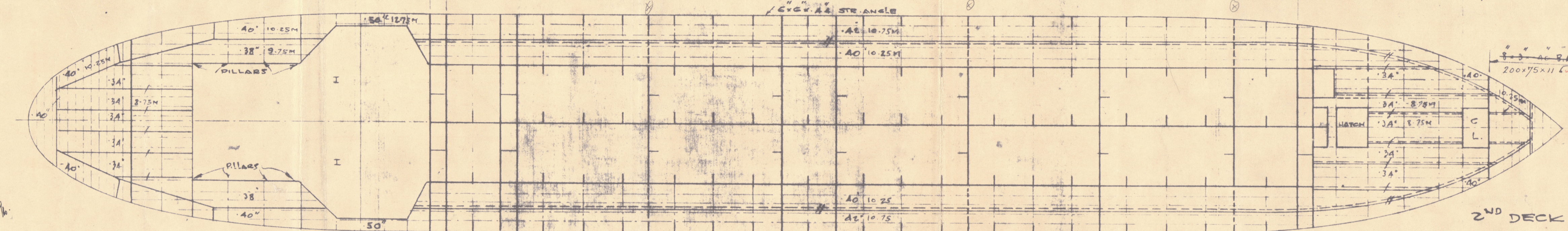
LONG'S 6'-3.54" x 22.6" L.N.B.S. 165x75x8/C



LONG'S 6'-3.54" x 22.6" L.N.B.S. 150x75x10 1/2" L

LONGITUDINALS 4'-5.54" x 22.6" L.N.B.S. 150x75x10 1/2" L

LONG'S 6'-3.54" x 22.6" L.N.B.S. 165x75x8/C



SIR JOSEPH W. ISHERWOOD & CO. LTD.,  
4, LLOYD'S AVENUE,  
LONDON, E.C.3.  
FOR ENCLOSURE TO  
DATE 24.7.29

154.16.1609. Plan No 7173  
29.7.29



CLASSIFICATION PROFILE  
AND  
DECK PLANS.

SINGLE SCREW BULK OIL CARRYING  
STEAMER. DESIGN S.S.C. NO 561.

DIMENSIONS.

117.342M LENGTH B.P. 385'-0"  
17.068M BEAM MLD 56'-0"  
9.25M DEPTH MLD 27'-0"  
SCALE 1-200  
ISHERWOOD BRACKETLESS SYSTEM  
(PATENT)

APPROVED, SIR JOSEPH W. ISHERWOOD & CO. LTD.  
17 BATTERY PLACE N.Y.C.

SIGNED J. Stewart

PREPARED BY STANDARD SHIPPING CO.  
26 BROADWAY N.Y.C.

SIGNED J. Stewart  
NAVAL ARCHITECT

No 2851

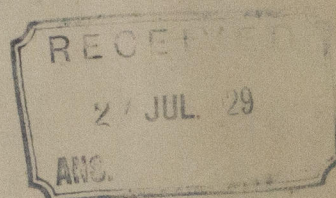
S.S.C. HULL NO 561  
S.S.C. NO 561-4

W1056-0181



W1056-0181

no 609



~~GEN. DOX NO 116~~

Classification Profile & Sko

C.S. "Pendopo"

W1056-0181

RETAIN



© 2020

Lloyd's Register  
Foundation