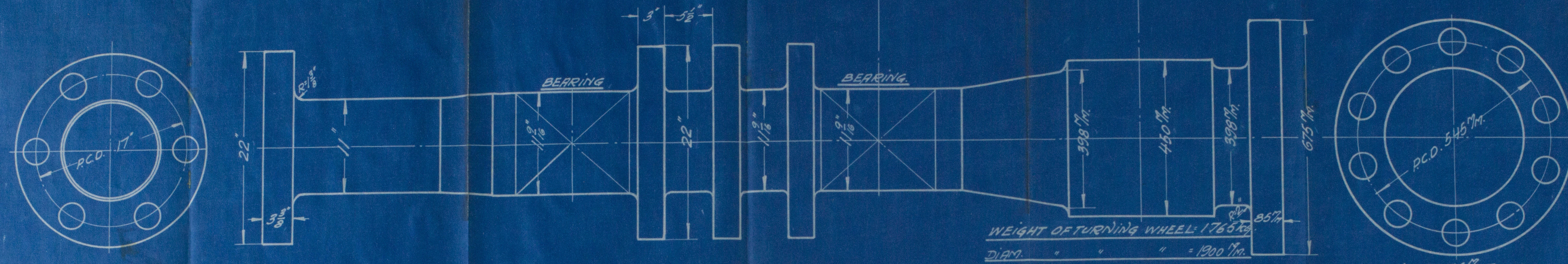
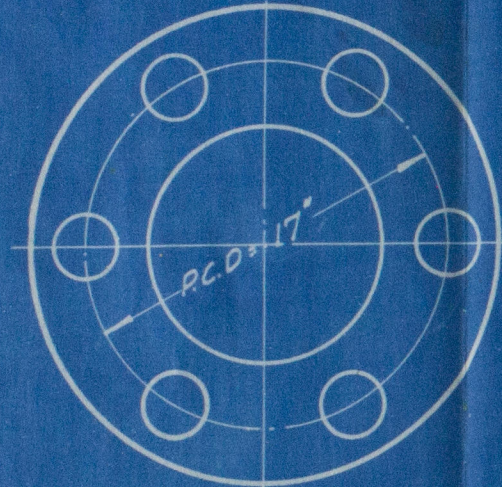


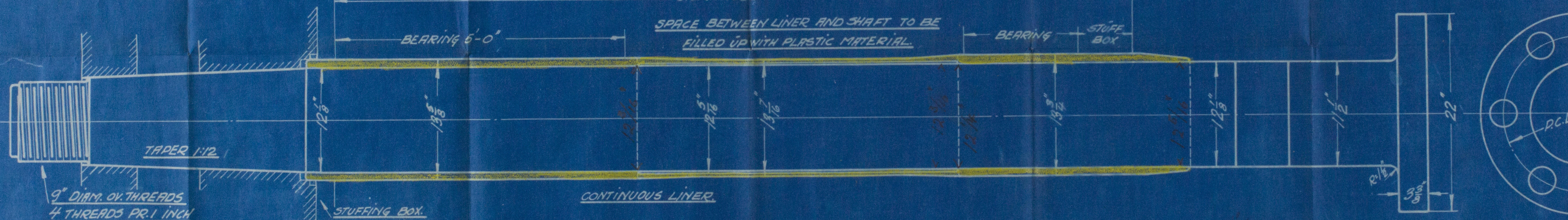
26/3/26
33058A



6 OFF 76 mm BOLTS



6 OFF 76 mm BOLTS



8 CYLINDER FOUR STROKE CYCLE DIESEL ENGINE.

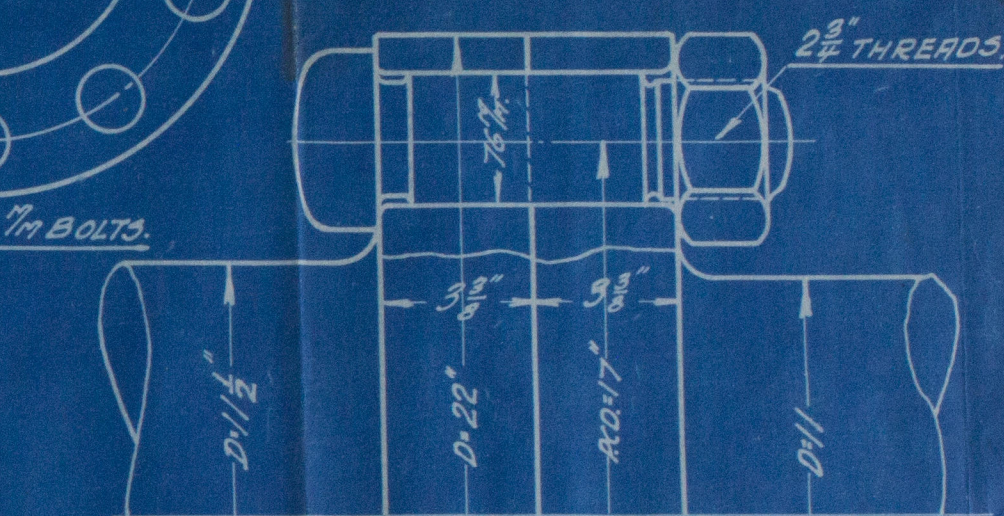
CYLINDER DIAM. 630 mm = 24.8" DIAM OF PROPELLER 13'-0" MAX.

STROKE 1100 mm = 43.3"

REVS. PR. MIN. 140.

SHAFTS FOR ODENSE YARD N° 24.

AKTIESELSKABET
BURMEISTER & WAIN'S MASKIN- OG SKIBSBYGGERI



6 OFF 76 mm BOLTS



6 OFF 76 mm BOLTS



6 OFF 76 mm BOLTS

AKTIESELSKABET
BURMEISTER & WAIN'S
MASKIN & SKIBSBYGGERI
23-12 1925 N° 33058A



W1054-0102

Plan of
THRUST, INTERMEDIATE
AND SCREW SHAFTS
for the Diesel Oil Engines
to be constructed by

AKTIESELSKABET
BURMEISTER & WAIN'S MASKIN- OG SKIBSBYGGERI
Copenhagen

for the Twin Screw Motor Vessel

Yard N^o 24
being built by
Odense Staal-skibsverft
ved A. C. Møller.

Odense.

M^r KNUTE NELSON OF OSLO

C.P.N. R.P.T. N^o 7390.

Lloyd's Register
Foundation