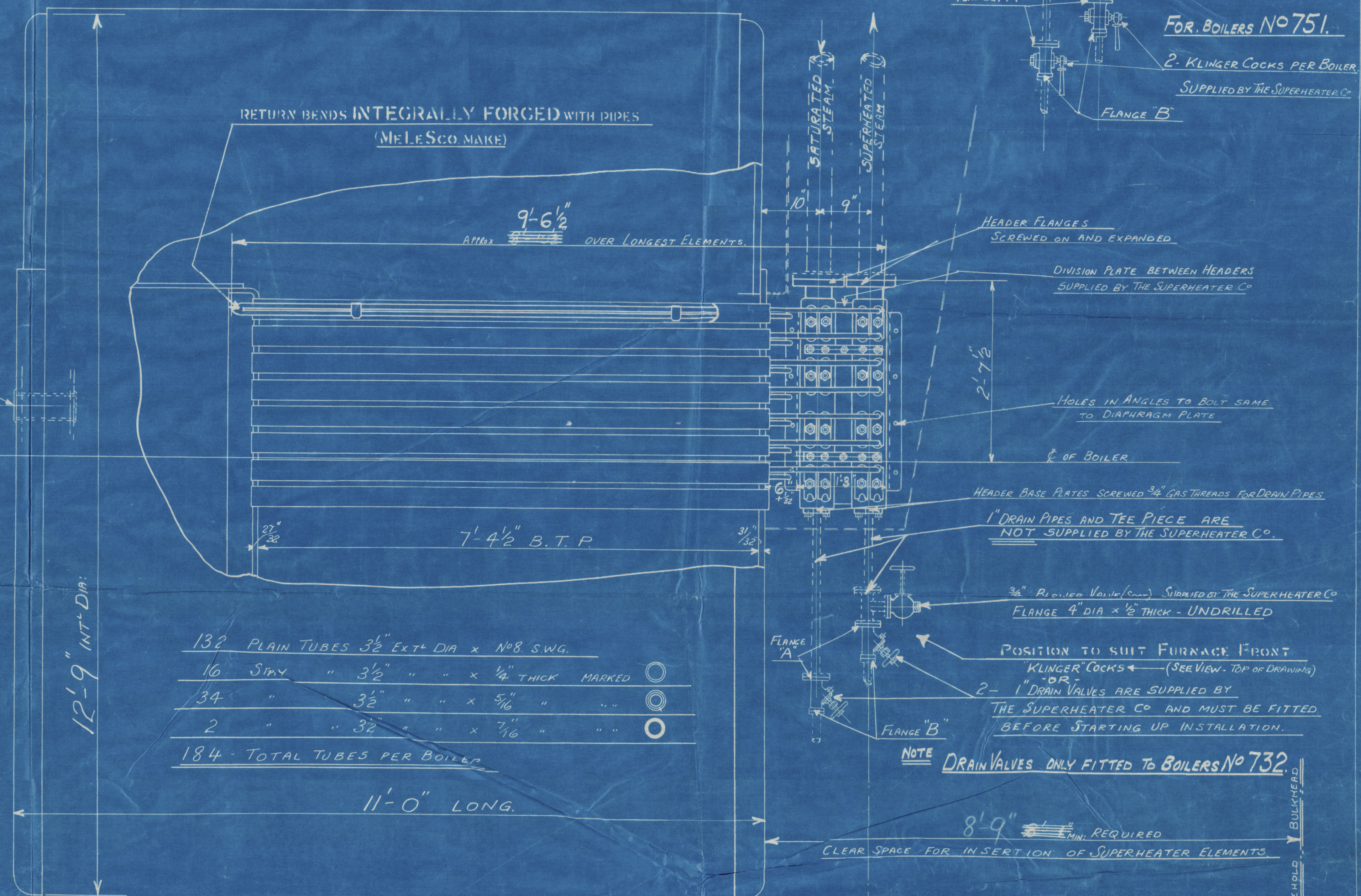
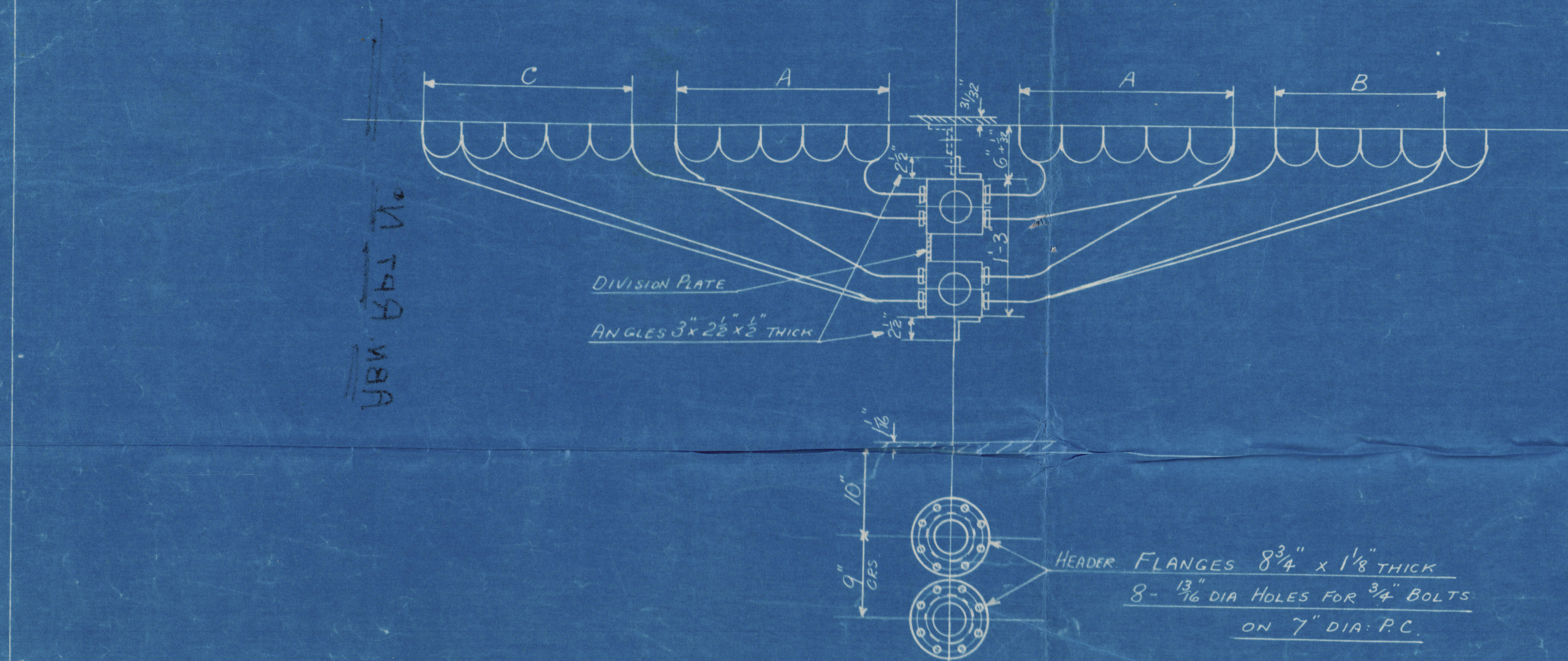
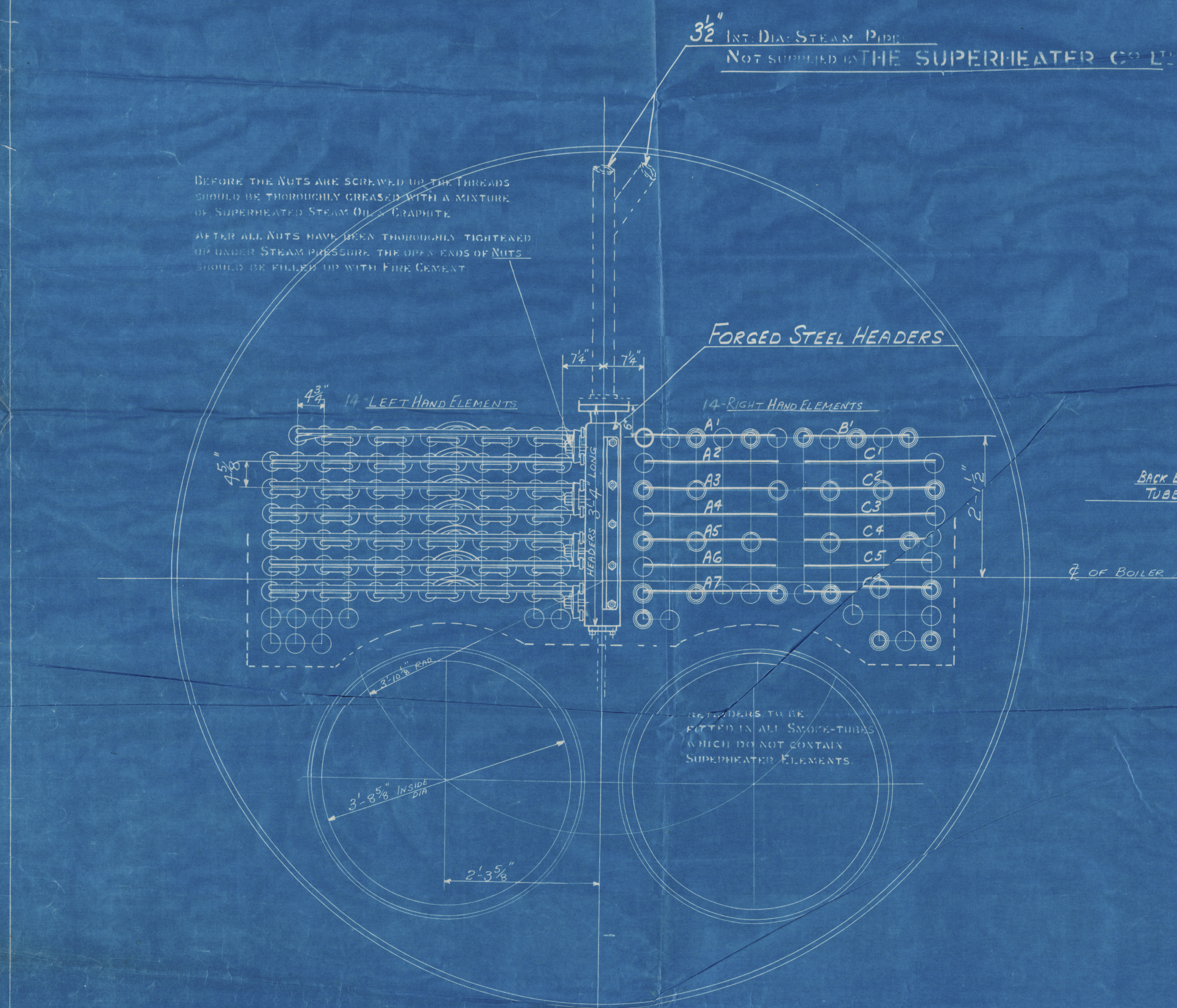


REVISION	REMARKS.
A	OUTER ANGLE IN BOWL 4 LINE ELT. NORM. LENGTH OF ELS. INCREASED BY 3" TO 9' 5 1/2".
B	STOCK HOLE DIMENSION IN ELS. FROM 8 1/4" TO 8 1/2".
C	4 LINE ELT. COILED. LENGTH OF ELS. INCREASED BY 5" TO 9' 10 1/2". STOCK HOLE DIMENSION TO BE INCREASED.
	KLINGER COCKS TO BE SUPPLIED FOR BLS No 751 (127594) AND FUTURE.



NUMBER OF BOILERS	2	PER SHIP (NATURAL DRAUGHT- OIL FIRED)
WORKING PRESSURE	= 215 LBS PER SQ IN	PER BOILER
GRATE AREA	=	PER SHIP
HEATING SURFACE	= 1620 # = 3240 #	PER SHIP

TO PASS LLOYDS SURVEY AND FRENCH LAW REQUIREMENTS.
TEST PRESSURE 645 LBS PER SQ IN

la.
7/6/39.

S.T. "VIKINGS"

THE DESIGN SHOWN ON THIS DRAWING IS PROTECTED BY PATENTS OWNED AND CONTROLLED BY THE SUPERHEATER CO. LTD. BUSH HOUSE LONDON W.C.2		
TITLE ARRANGEMENT OF SUPERHEATER "S" TYPE		
REF. (NO)	DRAWING NOS	
8835M	1026	MN10130C
HALL, RUSSELL & CO LIMITED		
BOILERS No 732 (8835M)		
" " No 751 (127594)		
W1044-0020		

MESSRS HALL RUSSELL & CO

YARD No 751

RETAIN
ARRANGEMENT of
SUPEREATEER

ABN. RPT No 20231

RETAIN



1/1 © 2023/2

Lloyd's Register
Foundation

W1044-0070