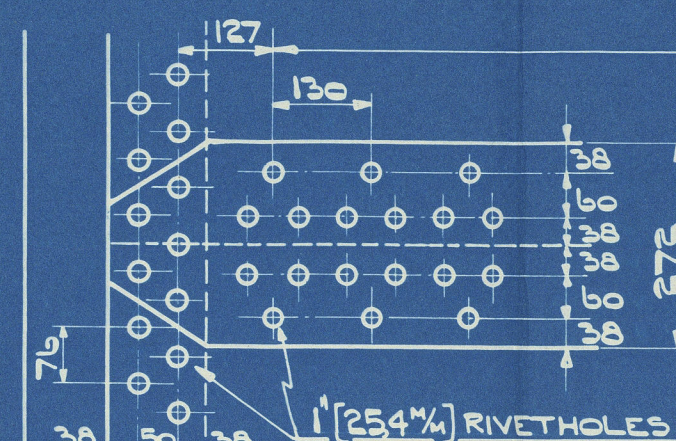
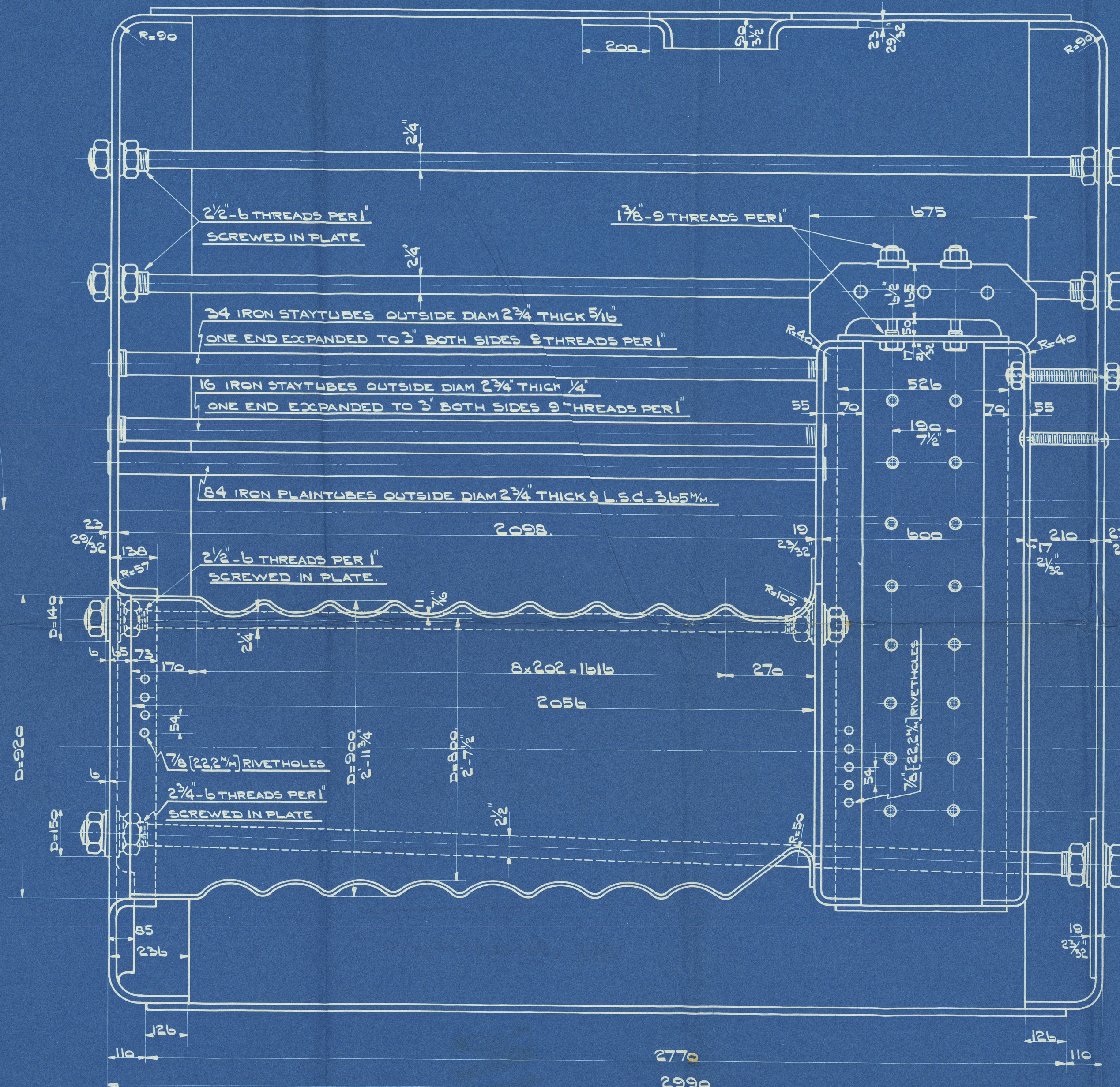
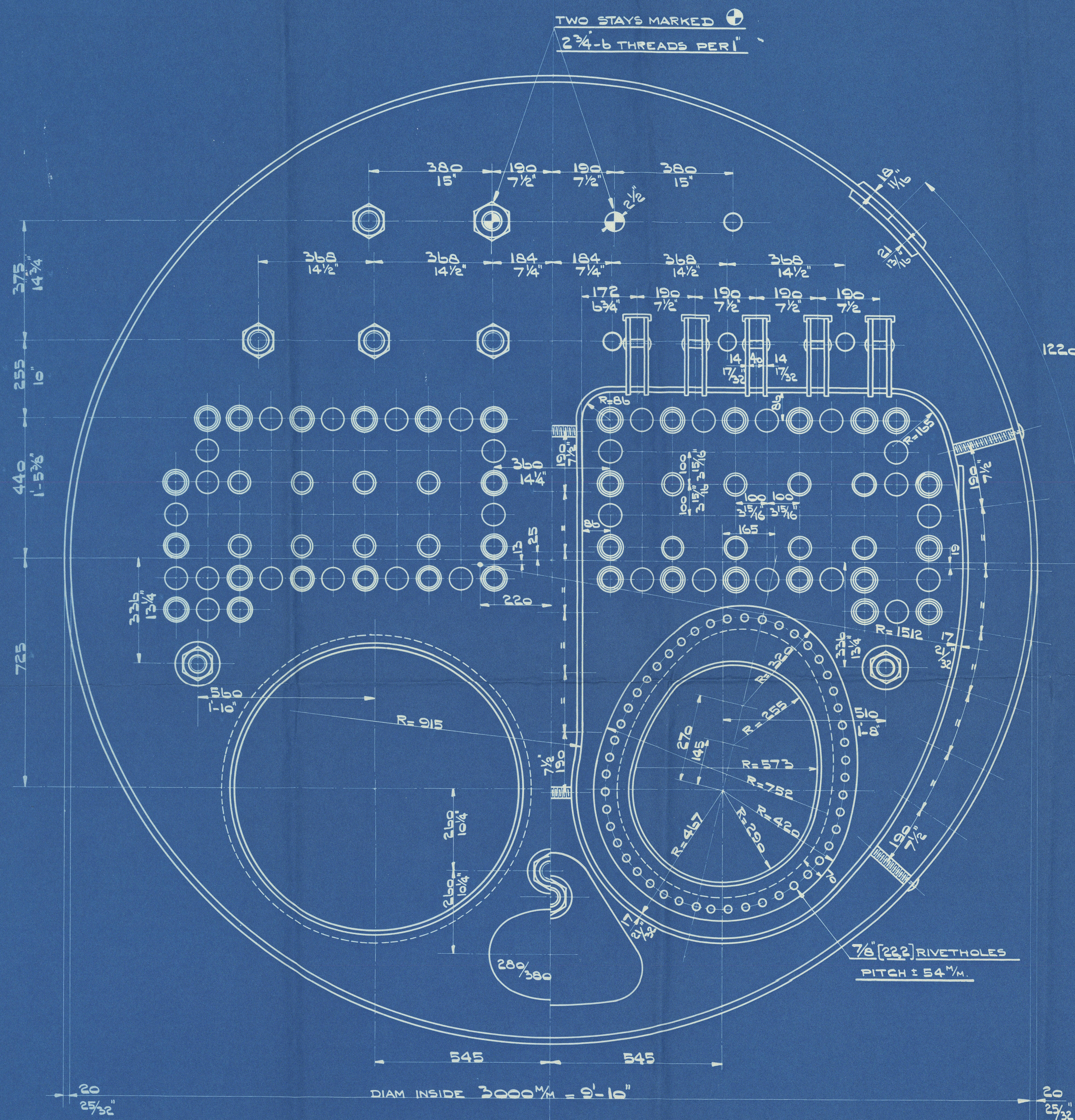
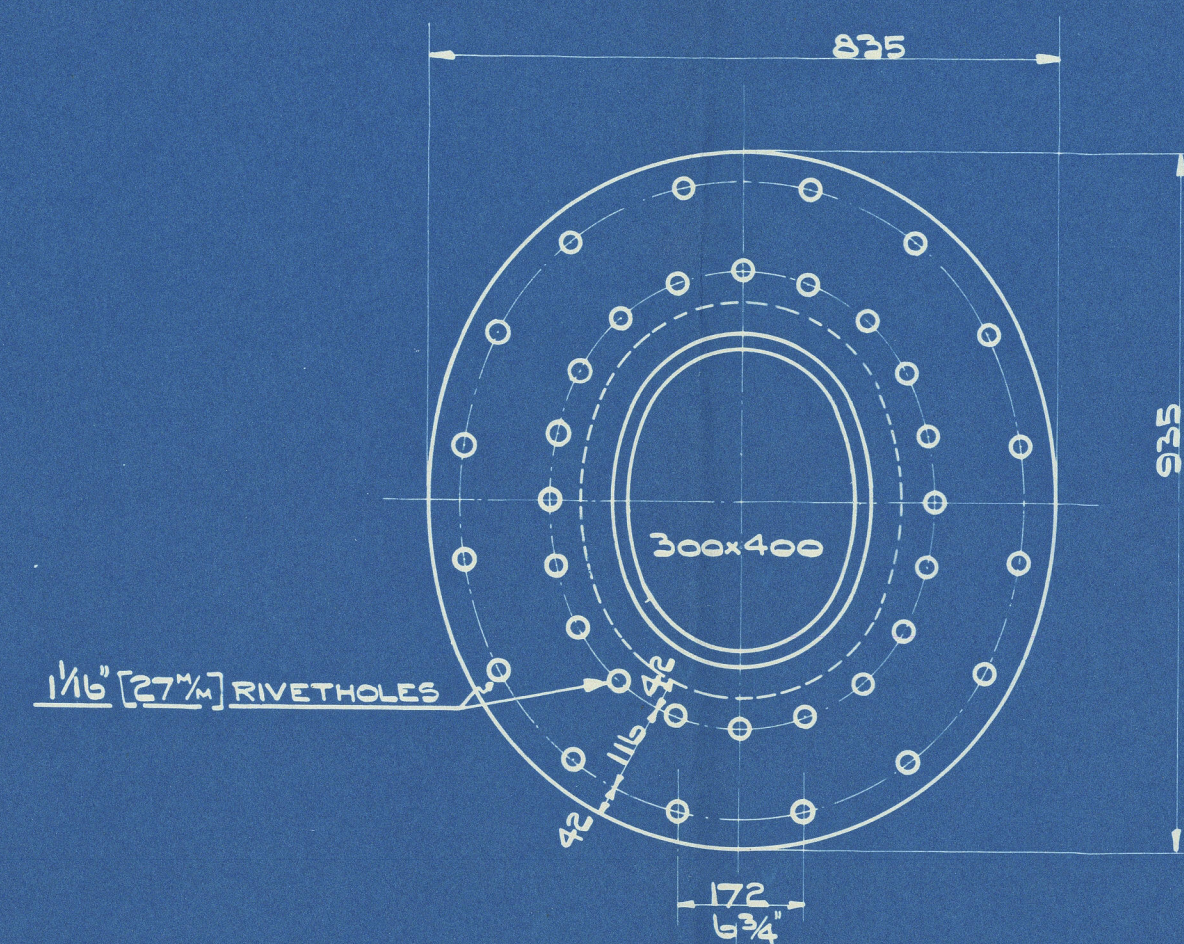


INSIDE. $77 \text{ M}^2 = 829 \text{ FT}^2$

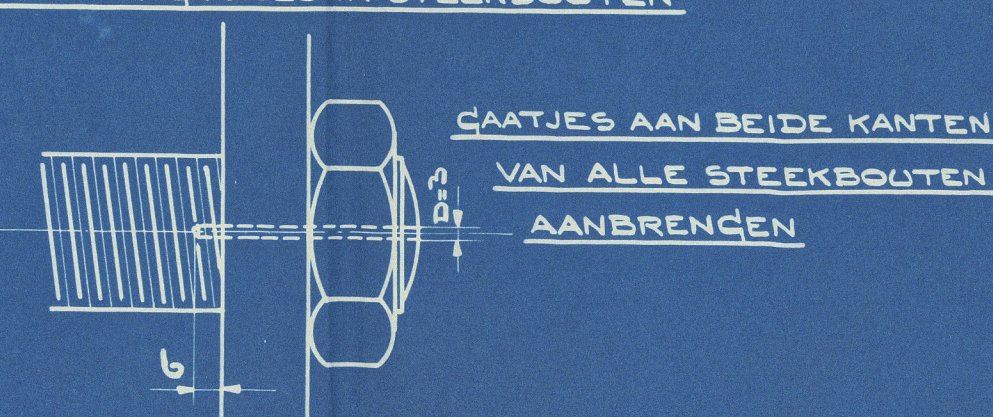
DUTCH EAST INDIAN REGULATIONS

WORKING PRESSURE $150 \text{ LBS./INCH}^2 = 10,5 \text{ KG/CM}^2$

TEST PRESSURE 275 L.B.S./INCH² = 19,3 KC/CM²



DETAIL VAN CAATJES IN STEEKBOUTEN



GAATJES AAN BEIDE KANTEN
VAN ALLE STEEKBOUTEN
AANBRENGEN

 STAYTUBES $\frac{5}{16}$ " THICK

○ STAYTUBES 1/4" THICK.

⊗ COMBUSTION CHAMBER STAYS 1 5/8" - 9 THREADS PER 1" FITTED WITH NUTS ON BOTH ENDS [AREA UNDER THREADS 1.720"]

① " 1 3/8 - 9 " 1 RIVETTED OVER [AREA UNDER THREADS 1,19 0']

VOOR BESTELTECK MATERIAAL ZIE TEEK. NO. 4549B EN 4550B

QUALITY OF MATERIAL			
DESCRIPTION	TENSILE STRENGTH		MINIMUM ELONGATION
	TONS/ /INCH ²	KG./MM ²	
SHELLPLATE , BUTTSTRAPS	29 $\frac{3}{4}$ -33	47-52	20% IN 8"
CHAMBER PLATES, COMBUSTION CHAMBERPLATES, DOUBLING- PLATES	26-30	41-47 $\frac{5}{8}$	23% IN 8"
CIRDERS	28-32	44-50 $\frac{5}{8}$	20% IN 8"
FURNACES	26-30	41-47 $\frac{5}{8}$	23% IN 8"
LONGITUDINAL STAYS	28-32	44-50 $\frac{5}{8}$	20% ON STAND TEST PIECE, B 24% ON STAND TEST PIECE, C
SCREWED STAYS	26-30	41-47 $\frac{5}{8}$	23% ON STAND TEST PIECE, B 26% ON STAND TEST PIECE, C
RIVETS	26-30	41-47 $\frac{5}{8}$	25% ON STAND TEST PIECE, B 30% ON STAND TEST PIECE, C

[illegible]

STUKLIJST PER KETEL

ORDER No.	KLEIN No.	KETEL No.	Burgerhout's Machinefabriek & Scheepswerf ROTTERDAM
		712	STOOMKETEL
			WERKPLAATS No.
			9 2020
			Schaal 1:1002 Datum JAN 1930
		KW	Reg. No. 2944-A

W11043-0088

Meesp. Burgerhout
Plan of Donkey boiler
No 712
for this Yard no 123.

~~GENERAL INDEX~~ 158

M.V. "Anastasia"

RETAIN



© 2020

Lloyd's Register
Foundation