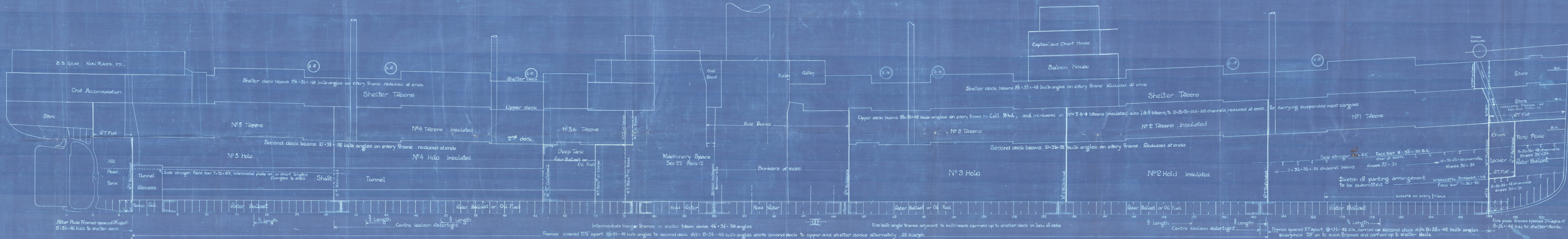


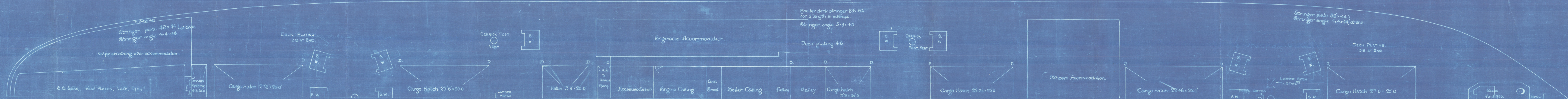
S. S. N° 1153 PROFILE & DECK PLANS

Scale 1/16" = 1' 0"

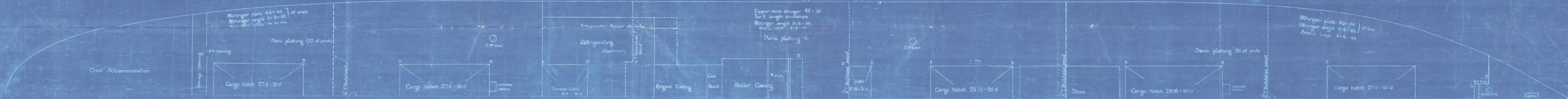
Dimensions: Length 460' 0" mid. • Breadth 60' 0" mid. • Depth 38' 9" mid. to shelter deck or 30' 6" to upper deck.



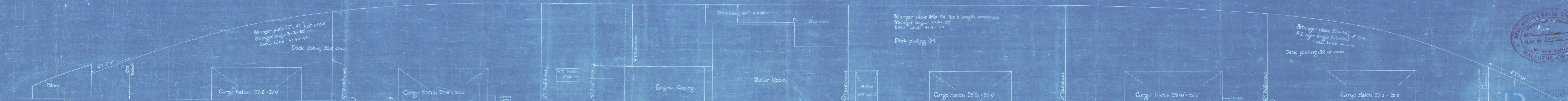
Shelter Deck



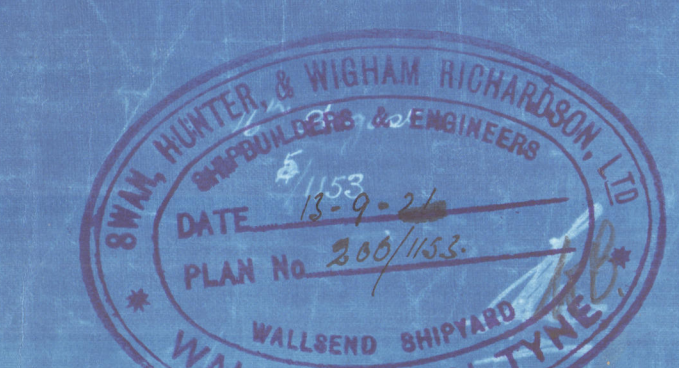
Upper Deck



Second Deck



Tracking connected to Lloyd's Approved Plan. 8/19



Messrs Swan & Hunter.

No. 1153.

S.S. "MONTFERLAND"

Profile & deck plan of
vessel as built.

S. S. MONTFERLAND

NEWCASTLE ON TYNE.

Report No. 44444

WS 93



© 2020

Lloyd's Register
Foundation

W104-0225