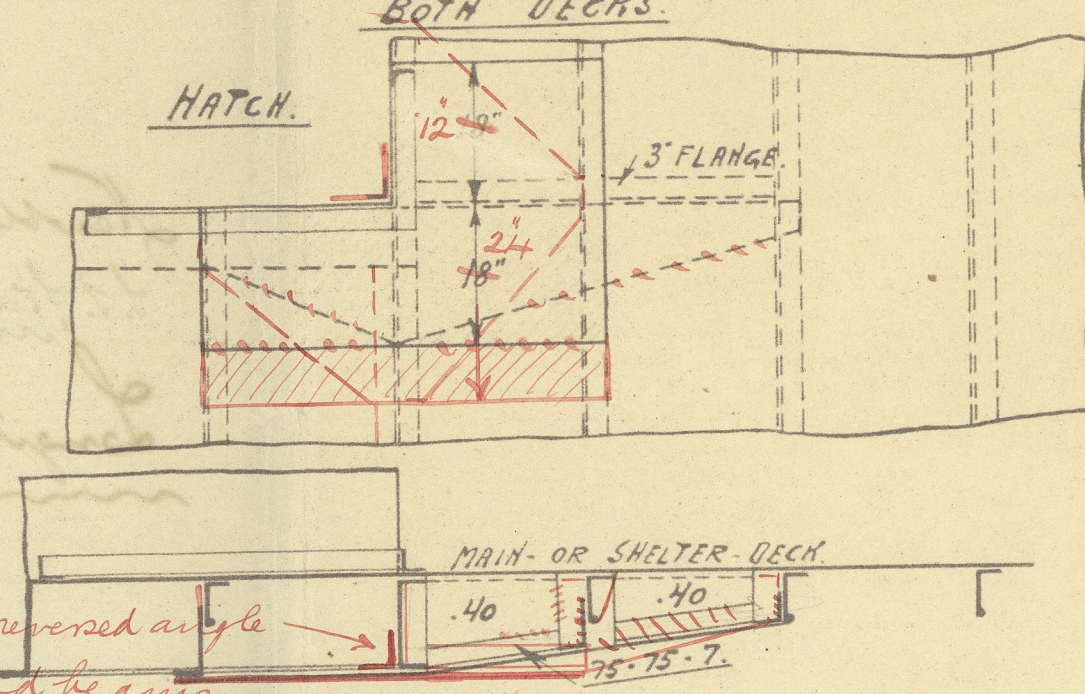


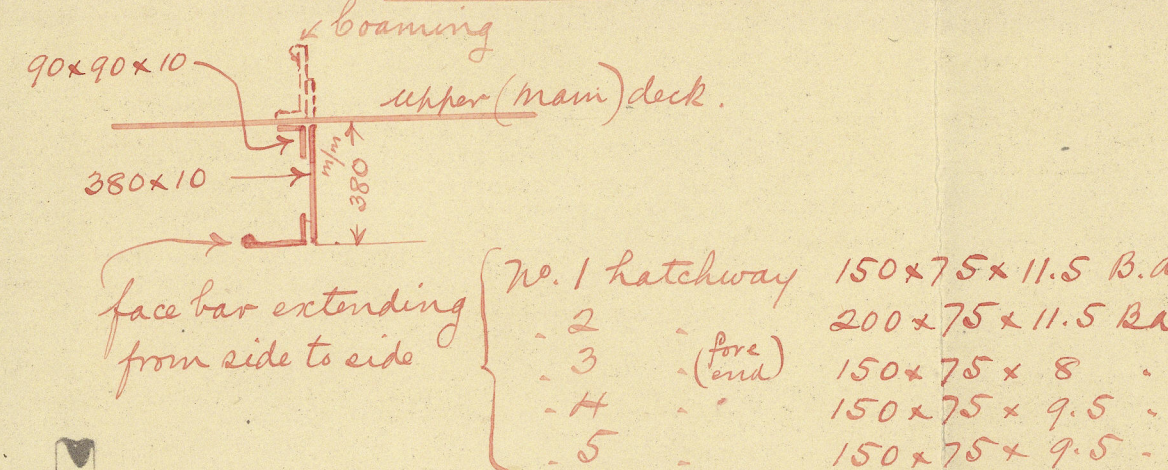
25-10-18

SKETCH OF INTERCOSTALS AT ALL HATCHCORNER IN BOTH DECKS.

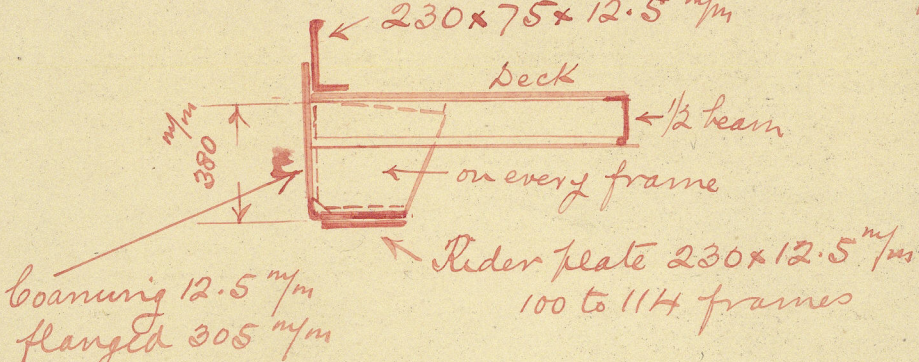


* See note on deck plan re. reversed angle in shelter deck hatch end beams.

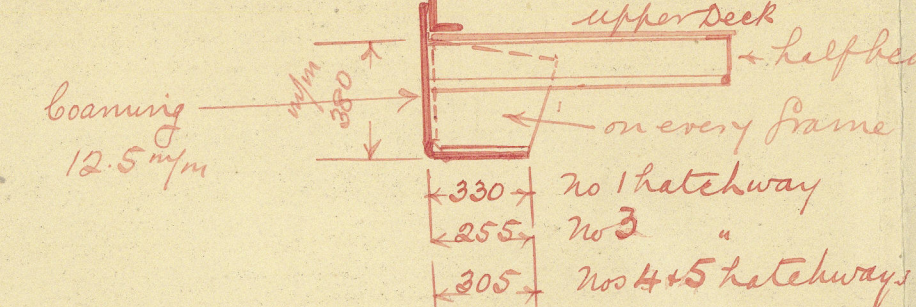
Section of upper (main) deck hatch end beams.



Upper deck hatchway coaming, No 2 hatch.

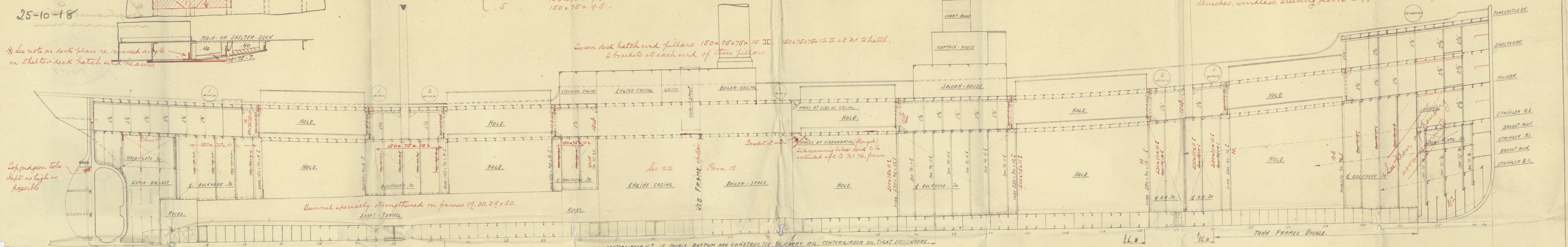


No 1, 3, 4 & 5 hatchways



FOR PEAKS & STRINGERS SEE SPECIAL PLAN.

Unrigger, wireless steering parts supported to Surveyors satisfaction



PROFILE AND DECK PLANS. S/S No 2 & 3.

DIMENSIONS.	
LENGTH OUTSIDE STEM AND STERNPOST	301'-0"
INSIDE	299'-0"
BREADTH MOULDED	44'-0"
DEPTH	21'-11"
HEIGHT OF FORECASTLE DECK	28'-11"
BURDECK	7'-0"
CAPTAINHOUSE	7'-0"
CAPTAINHOUSE	7'-0"

CLASS: BRITISH LLOYDS. 100 A. 1.

MATERIAL: STEEL.

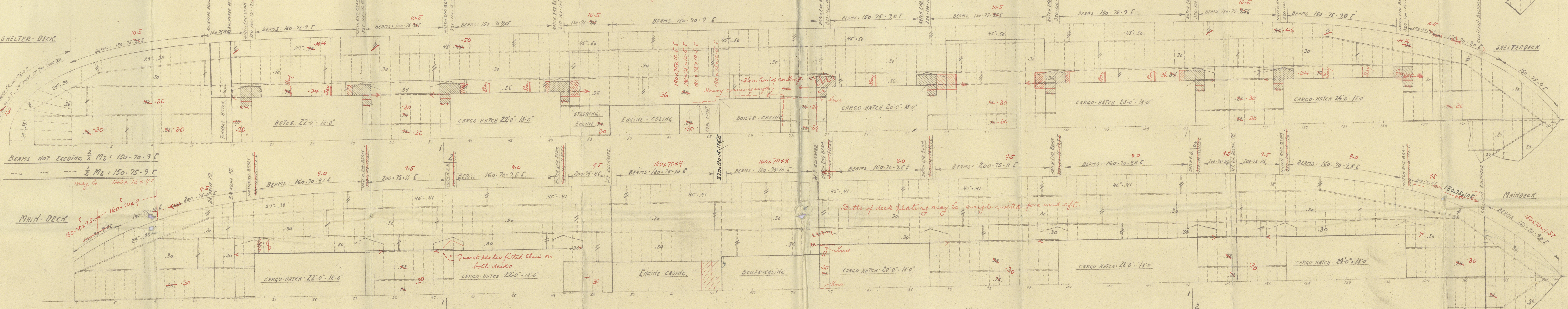
TYPE: SHELTERDECK WITH TONNAGE HATCH - TOPGALLANT FORECASTLE.

DRAUGHT: AS DEEP AS POSSIBLE, AT LEAST 20'-0".

SPEED: 10 KNOTS.

ALL THICKNESSES 1/4" INCH - AND 1/2" INCH.

* Shelter deck hatch and beams (except No 76) to have a reversed angle 90x90x10 fitted on lower edge of channel beam. The reversed angle bar to extend from hatch end to ship's side.



BEAMS NOT EXCEEDING 1/2" M2: 150-75-9 1/2" maybe 160x70x9 1/2" B.A.
1/2" M2: 150-75-9 1/2" maybe 150x70x9.5 angle.

Guano every 4th frame of angles 90x90x8.5 in Boiler space 11 1/2".

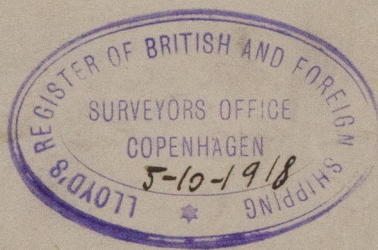
IF DOUBLE BOTTOM ARE CONSTRUCTED TO CARRY OIL. SEE MIDSHIPSECTION FOR RIVETING OF TANK TOP.

23.10.18

A/S "BALTICA" VERFET.
BYGGINA No 223
TECHNICALS ART. LONGSHIPS PLAN.
SHAFT: 1/2" I.F.T.
TIGHTEN AT 8
LLOYD'S REGISTER FOUNDATION

Baltica - Varften.
Copenhagen.

Newblay No 2 ~~1111~~
"I. I. trial" of Copenhagen.
"m"
Longitudinal Section.
~~~~~



Gen. Rpt. No. 6236.

RETAIN © 2020  
Lloyds Register  
Foundation

W10390119