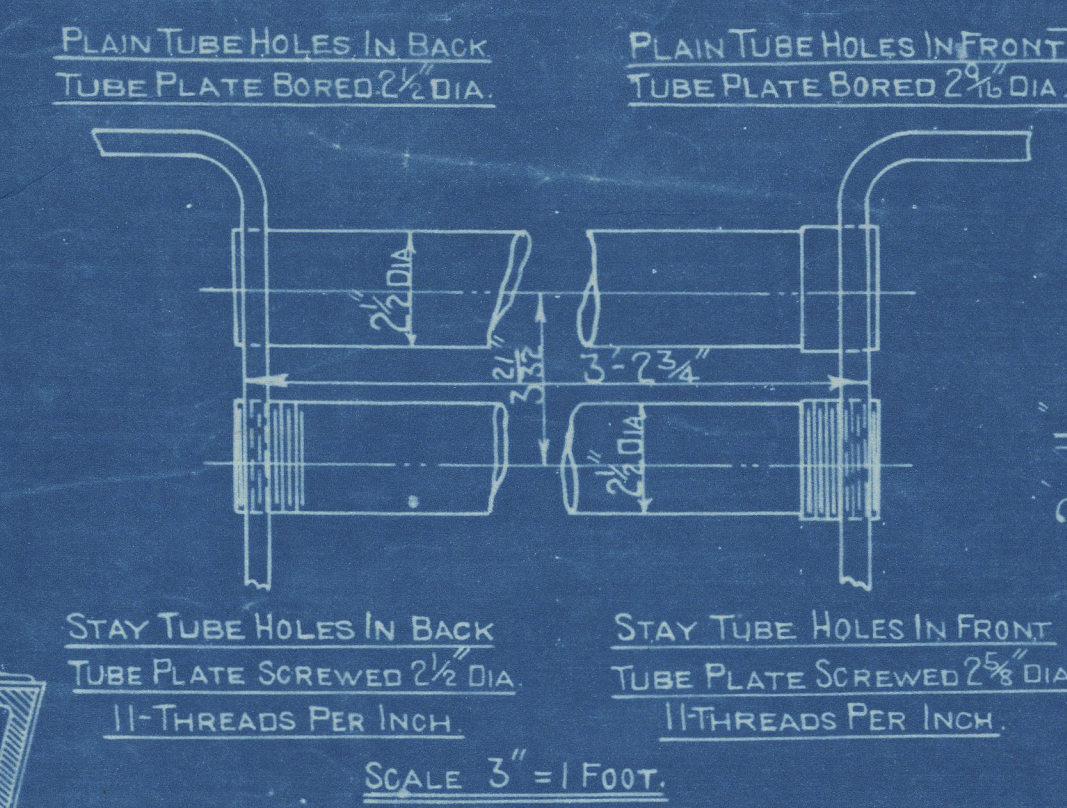


HORIZONTAL FLUE TUBES.



— LLOYDS —		
PLATE	$\frac{2.365 - .71875}{2.365} \times 100 =$	70 %
RIVETS	$\frac{.8 \times .48525}{2.365 \times .375} \times 85 =$	71.7 %
FRONT TUBE PLATE	$\frac{3.44 - 2.6375}{3.44} \times 100 =$	29.1 %
BACK " "	$\frac{3.64 - 2.9375}{3.64} \times 100 =$	31.7 %
SHELL	$\frac{20.500 - 2.75}{20.500} \times 100 =$	100 %
FRONT TUBE PLATE	$\frac{20.812 - 2.2121}{20.812} \times \frac{2.5}{2.8} =$	104.5 LBS
BACK " "	$\frac{20.5410 - 2.317}{20.5410} \times \frac{2.5}{2.8} =$	104.3 LBS
FURNACE	$\frac{12000 - 4.8}{12000} \times 100 =$	125 LBS.

Approved 22-3-10.
PATENT BOILER No 5831.
4' - 9" x 10' - 3" x 200# x 100 LBS.

FURNACE CROWN 26 To 29 TONS

SURVEY-LLOYDS.
STANDARD.

COCHRAN & Co. ANNAN Ld.
ENGINEERS & BOILERMAKERS
ANNAN (SCOTLAND)

DRAWING NO. 7625

COCHRAN & CO., ANNAN, LD.

Boiler No. 5831.

Drawing No. 7625

for.
Messrs Hall, Russell & Co.
S.S. No 5A.

'Norah Elsmie'

GLASGOW REPORT No. 31607.

HARPTREE COMBE EX



MARK ON BOILER.

BOILER No 5831

NO 11654 LLOYDS TEST. 200 lbs. 21.6.12. P.T.B
--



© 2020

 Lloyd's Register
 Foundation