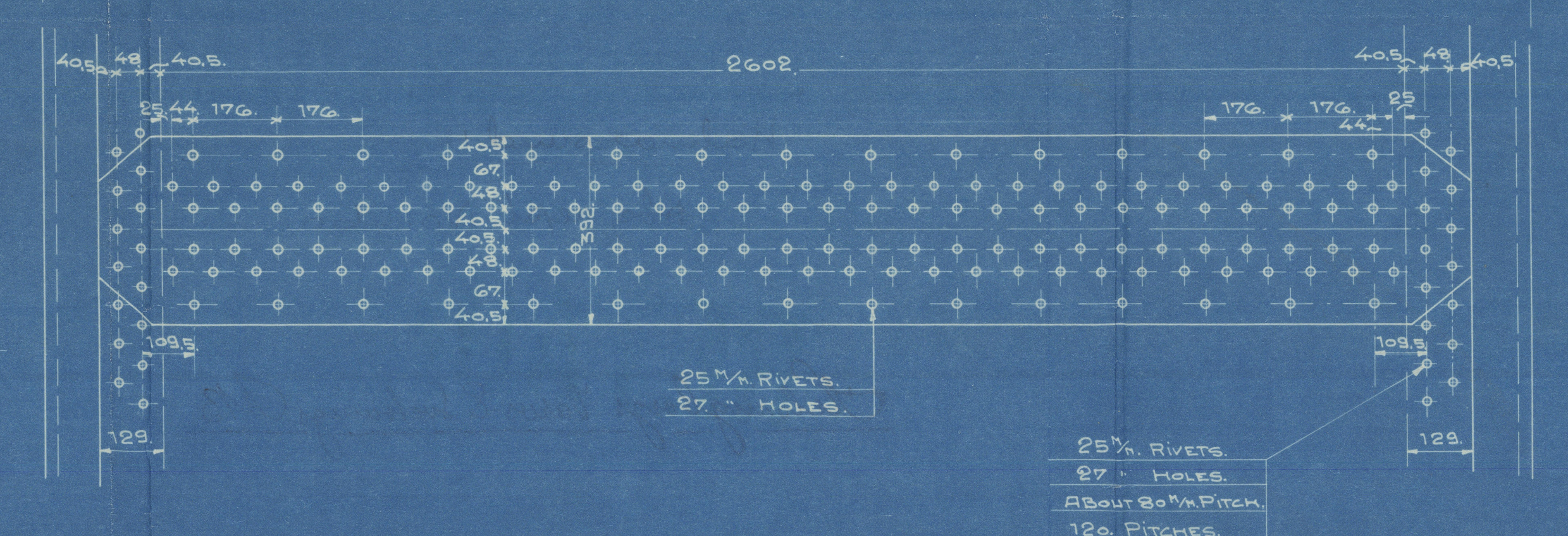
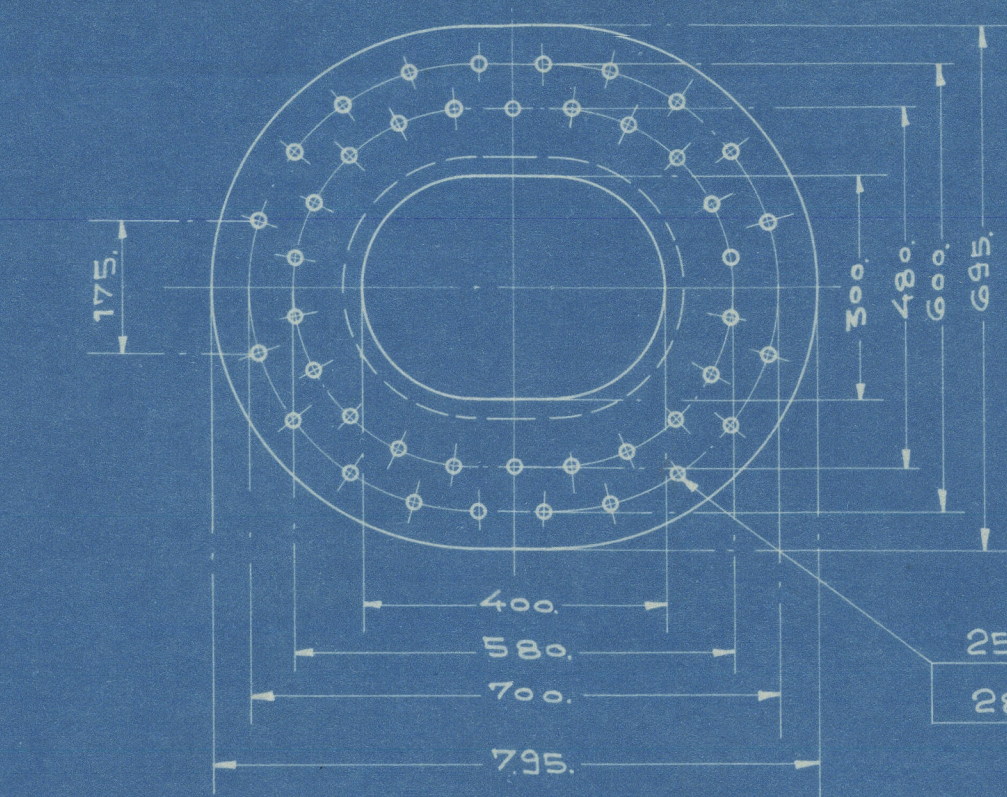
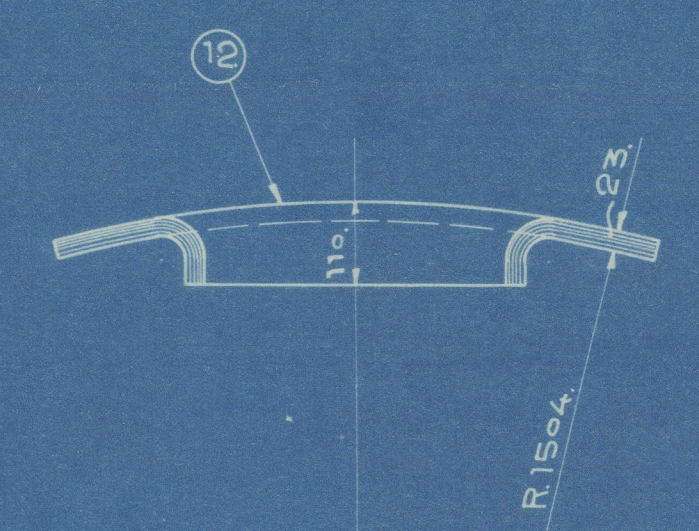
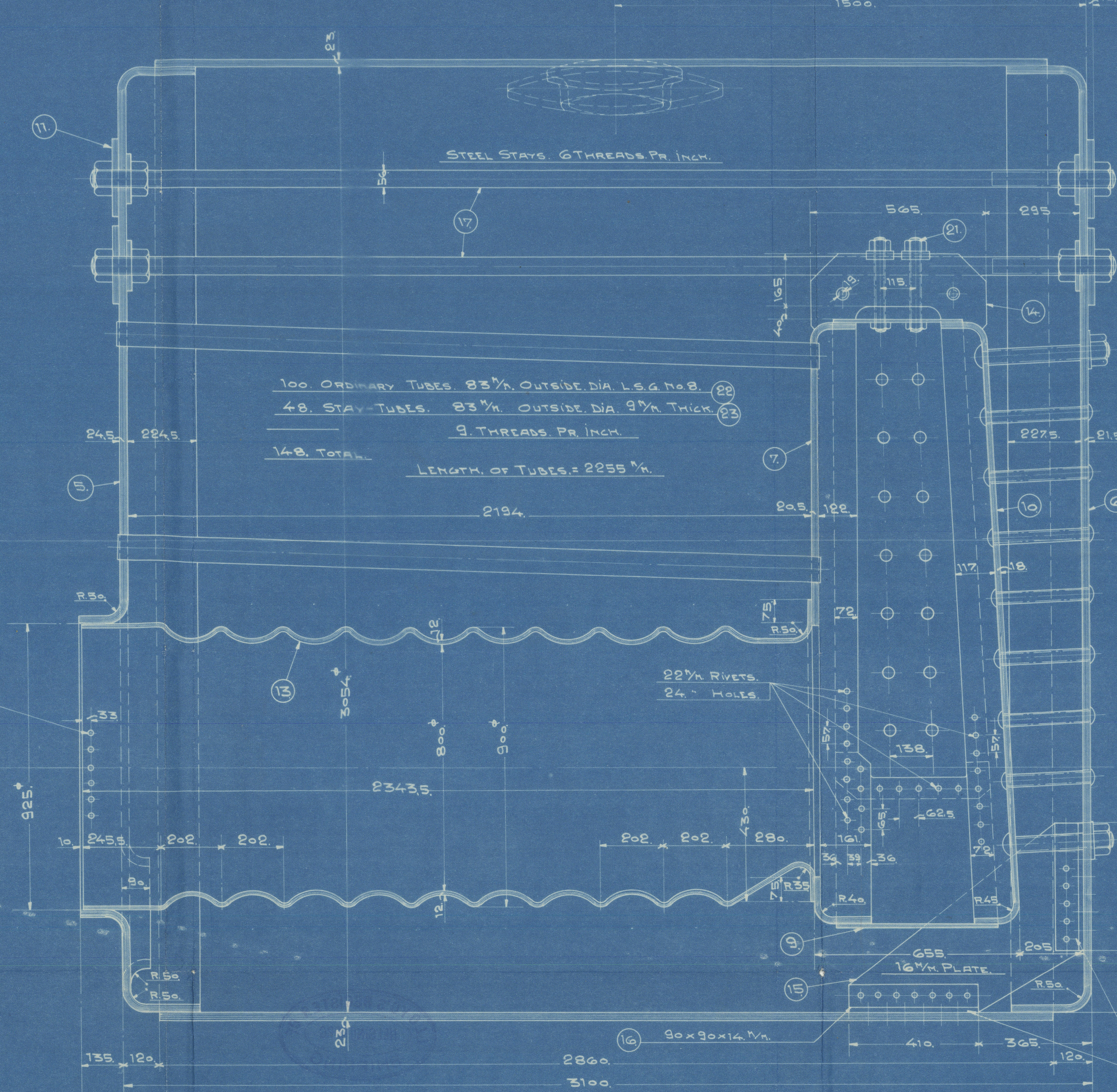
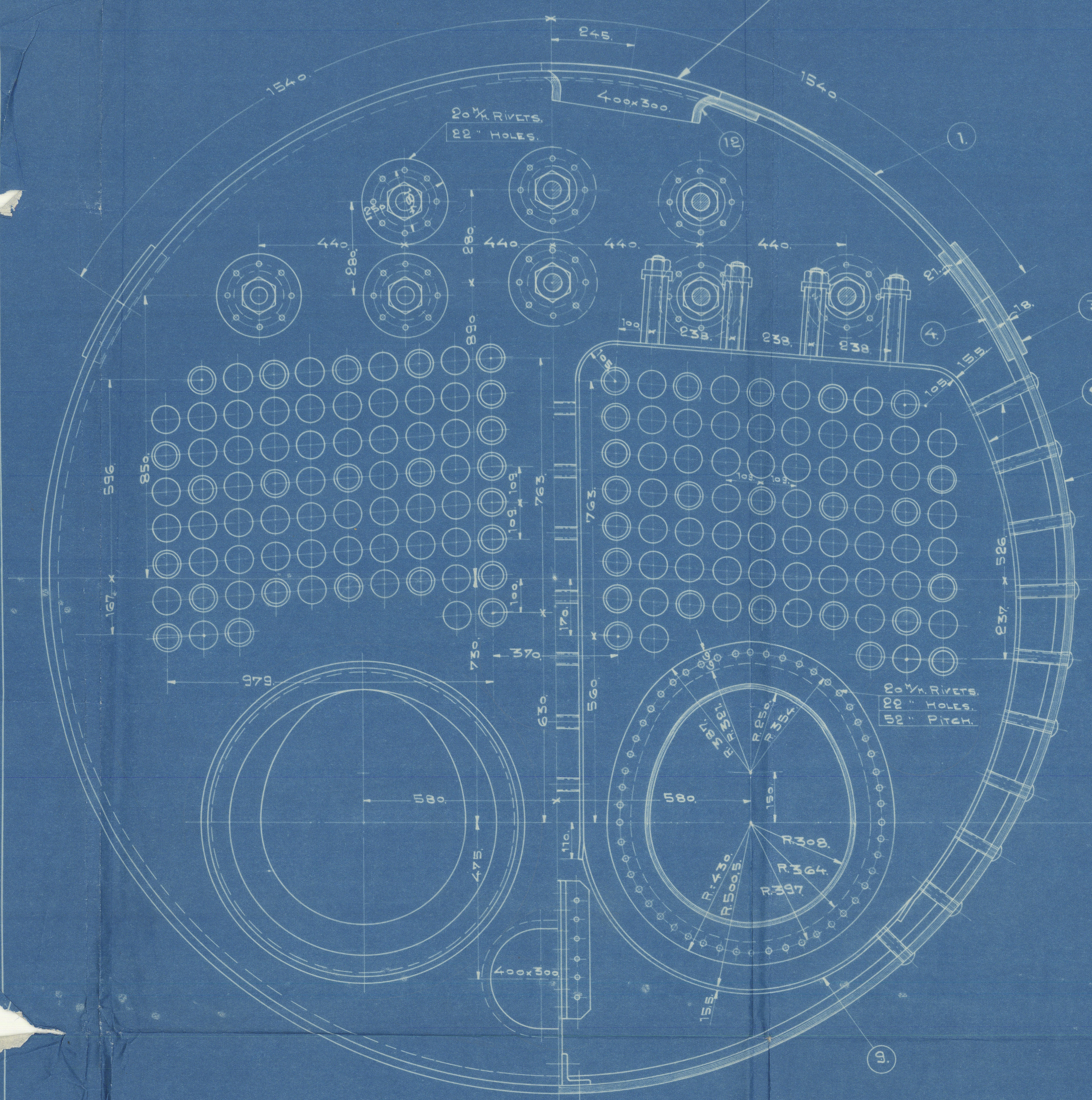


S.B. BOILER.
B.B. BOILER. THE MANHOLE OPPOSITE DRAWING.

8/1/29



MARK	NAME	THICKNESS IN INCHES	TENSILE STRENGTH MIN. MAX.	ELONGATION IN INCHES	REMARKS
1.	SHELL PLATE	23	28 35	20	1
2.	"	23	28 35	20	1
3.	OUTSIDE BUTT STRAPS	18	28 35	20	2
4.	INSIDE	21	28 35	20	2
5.	FRONT TUBE PLATE	24.5	28 30	23	1
6.	BACK PLATE	21.5	26 30	23	1
7.	BACK TUB PLATE	20.5	26 30	23	2
8.	SIDE AND TOP PLATES IN FIRE BOXES	15.5	26 30	23	2
9.	BOTTOM PLATES IN DO.	15.5	26 30	23	2
10.	BACK PLATES IN DO.	18	26 30	23	2
11.	WASHERS	19	28 35	20	10
12.	STIFFENING PLATE FOR MANHOLE	23	26 30	23	1
13.	FURFACES	12	26 30	23	2
14.	GIRDERS	16	28 35	20	10
15.	STIFFENING PLATE FOR BACK PLATE	16	26 30	23	1
16.	ANGLE	28	32 20	4	90x90x14 1/2 LENGTH 1700"
17.	LONGITUDINAL STAYS	56	28 35	20	8 6 THREADS PER INCH
18.	SCREW STAYS	50	26 30	23	12 9 " " "
19.	"	50	26 30	23	34 9 " " "
20.	"	38	26 30	23	100 9 " " "
21.	CROWN STAYS	38	26 30	23	16 9 " " "
22.	TUBES	23			100 2255 1/2 TOTAL LENGTH
23.	STAY TUBES	23			48 9 THREADS PER INCH
24.	RIVETS	20	30	25	

THE RANGE OF THE TENSILE BREAKING STRENGTH IS
NOT TO BE PERMITTED MORE THAN 4 TONS PER SQ. INCH
IN ANY CASE.

	M.S.	FEET.
HEATING SURFACE IN 148 TUBES	77.5	833.8
" " 2 FURFACES	5.73	61.8
" " 2 FIRE BOXES	5.00	53.7
TOTAL HEATING SURFACE	88.23	949.3
HEATING SURFACE = 34	STEAM ROOM = 378 M ³	
GRATE SURFACE		
WORKING PRESSURE	13.50	192
HYDRAULIC TEST	23.75	338
THE BOILER IS TO BE WORKED WITH NATURAL DRAUGHT.		

FOR ANALYSIS	BEST	ANAL.
2	5/6.53	53.81

HELSEINGBORG VARFS- & SVETSNINGS A.B.
HALSINGBORG

BOILER
HEATING SURFACE: 9487 FEET²
WORKING PRESSURE: 192 LBS/SQ. INCH
LLOYD'S TEST

RIT. AV. *ohn*
KOP. AV. *ohn*
GR. AV. *ohn*
GODK. AV. *ohn*

SKALA: 1:10
DATUM: 25-10-29

R. 602.



"

"

Kalmarsund IX.

Hbg rept No. 460.

Helsingborgs Varvs- & Sölsnärings AB.

"KALMARSUND IX"

ss '53.'

Main boiler



© 2021

Lloyd's Register
Foundation

W1034-0091