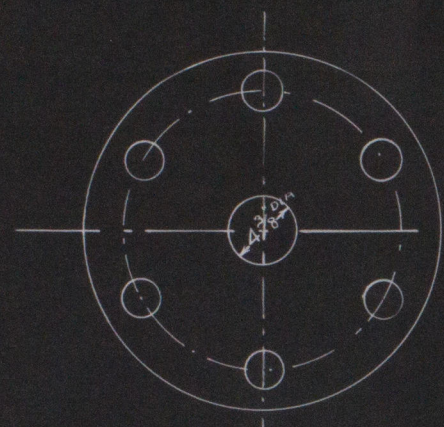
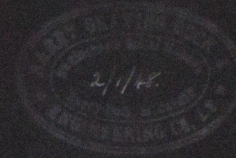
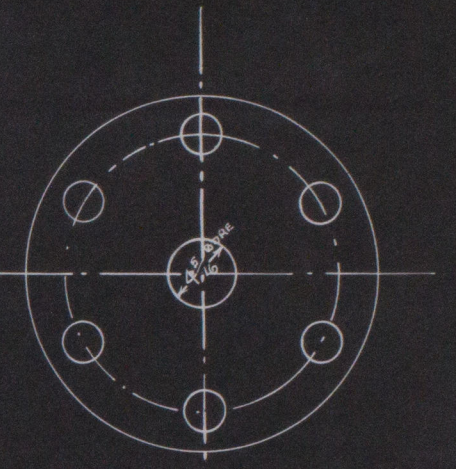
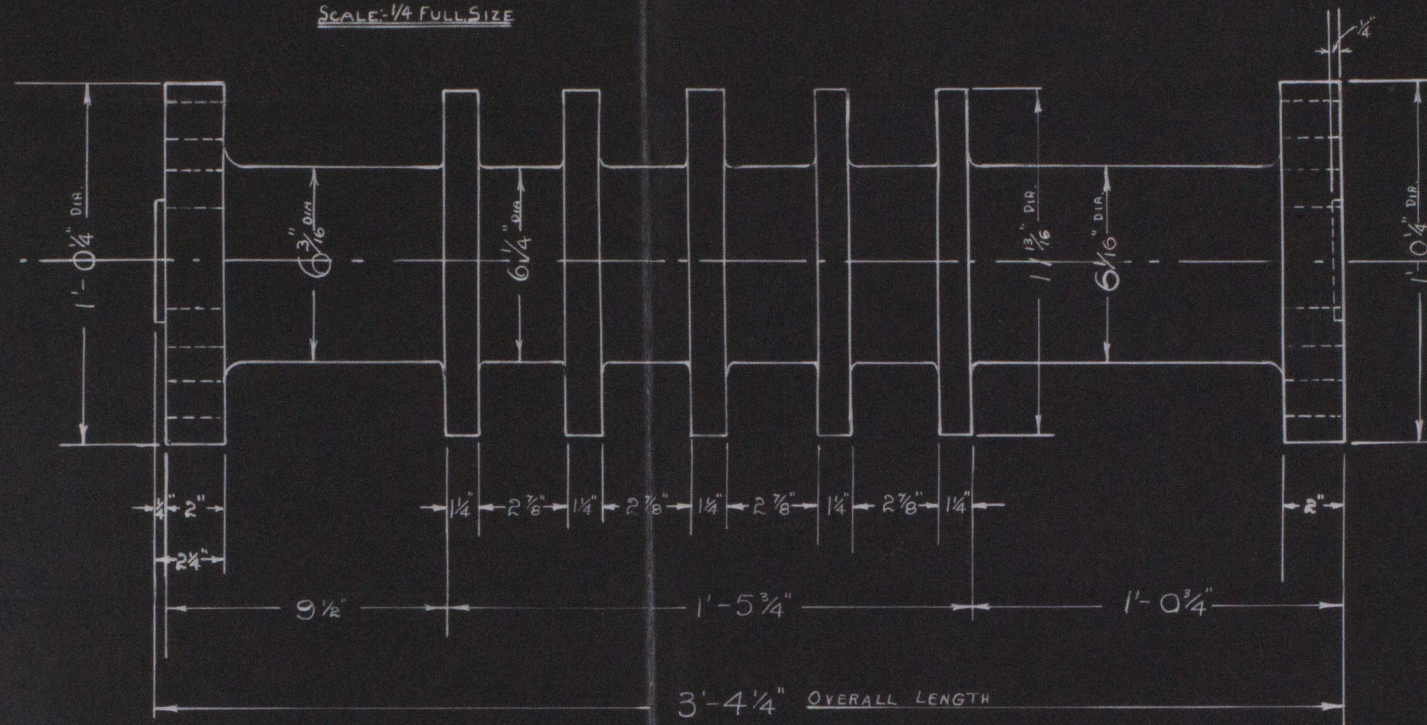


S/S GRANNY SUZANNE
EX-S/S SPRINGWAVE
THRUST SHAFT
SCALE: 1/4 FULL SIZE



6 HOLES DIA $1\frac{3}{8}$ "
P.C.D. $9\frac{15}{32}$ "

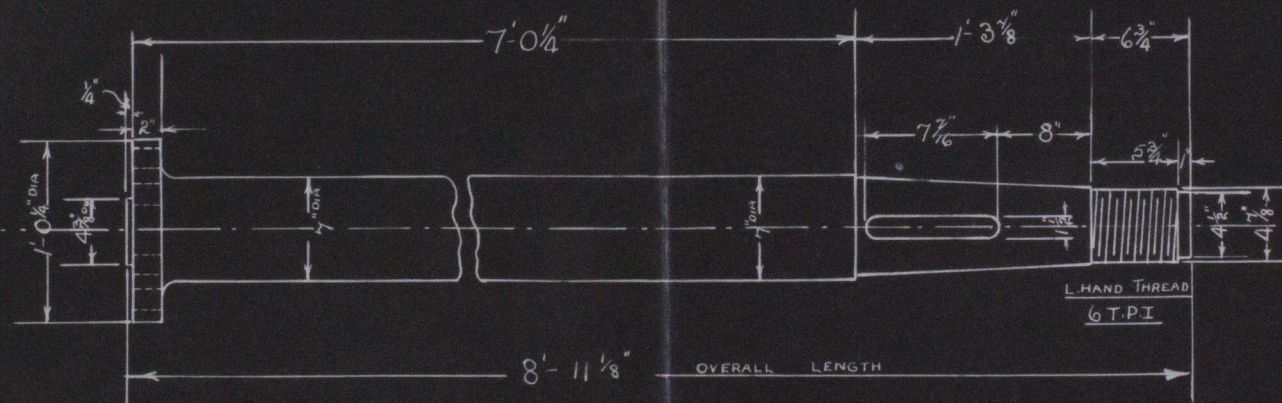
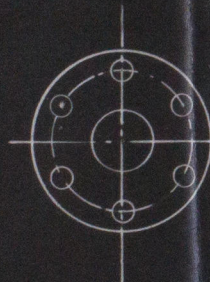


6 HOLES DIA $1\frac{3}{8}$ "
P.C.D. $9\frac{15}{32}$ "

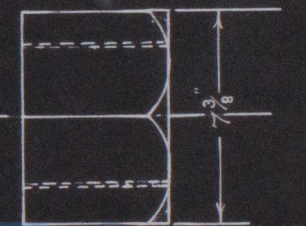
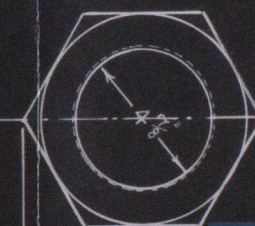
Note: The Intermediate Shaft is 6" dia with couplings as above.

TAIL SHAFT
SCALE: 1/2" = 1 FOOT

NOTE: ALL SIZES TO LLOYDS REQUIREMENTS, CONE COUPLING & KEYWAY TO TEMPLATES



PROPELLER NUT
SCALE: 1/4 FULL SIZE



8 1/4"

5"

NOTED.



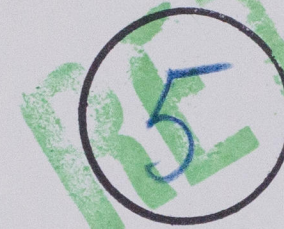
Lloyd's Register Foundation

W1032-0258

Thrust Shaft.
+ tailshaft

"GRANNY SUZANNE" ★

RECORDS DEPT.
LONDON



Buy 25743.



© 2020

Lloyd's Register
Foundation