

15/2/15

# BRISTOL DOCKS SUCTION HOPPER DREDGER

## BOILERS N<sup>o</sup> 567

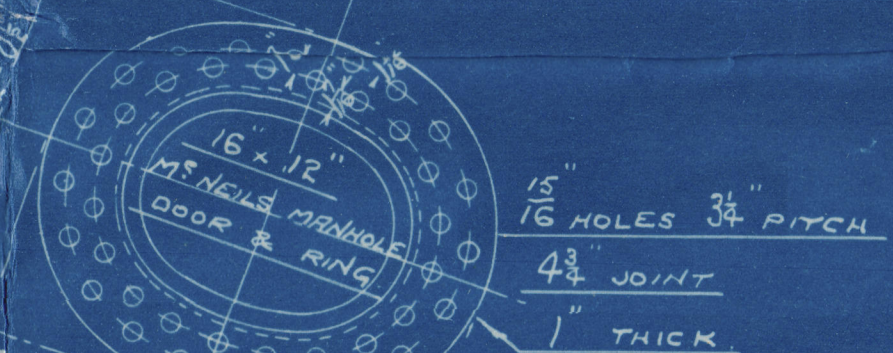
SCALE 1" = ONE FOOT.

TO LLOYDS REQUIREMENTS & TESTS FOR 130 LBS. W.P.

HEATING SURFACE  
244 TUBES ..... 1470 SQ. FT.  
COMB. CHAMBERS ..... 181  
FURNACES ..... 135  
TOTAL ..... 1786

GRATE SURFACE ..... 59.25 "

2" OFF.

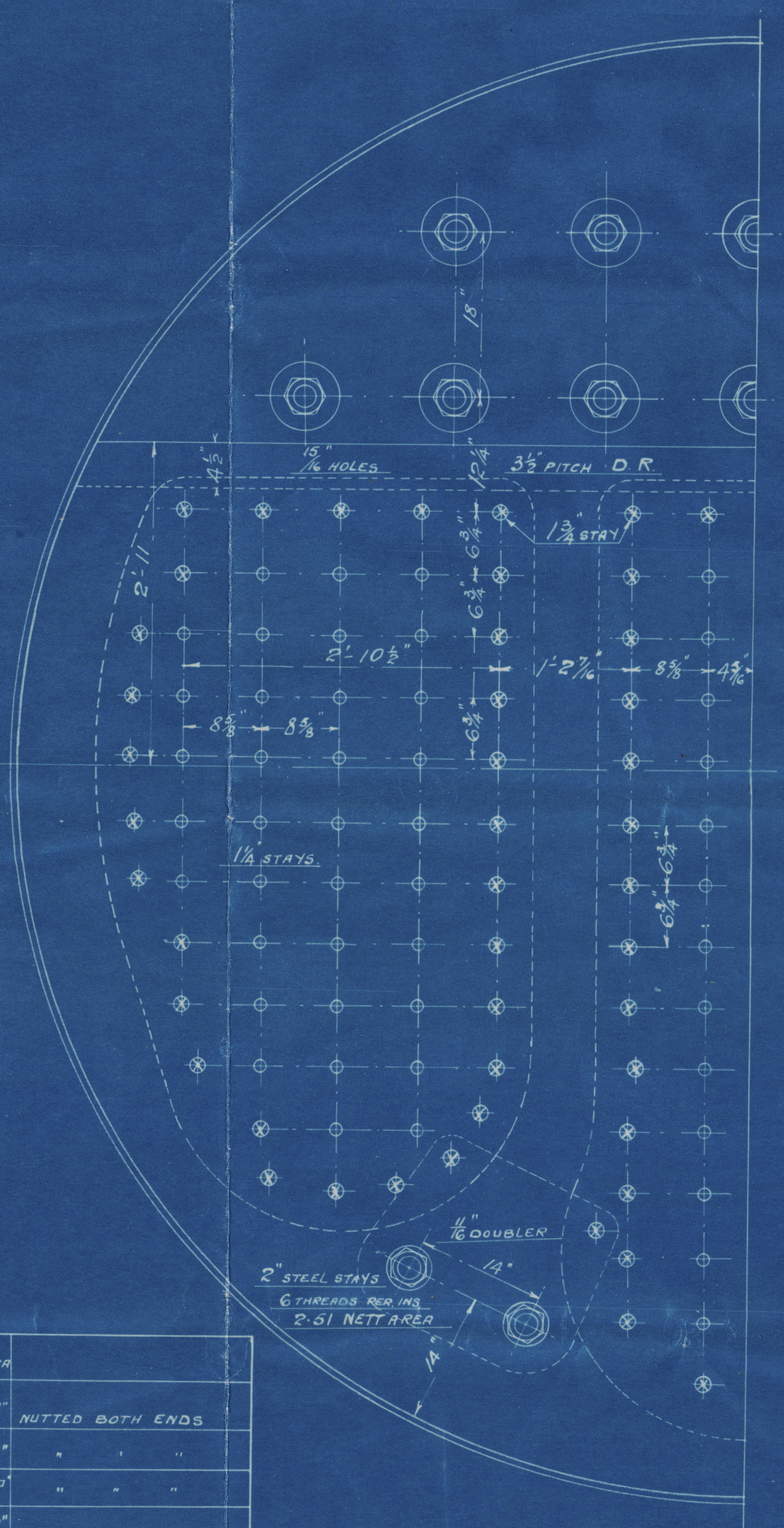
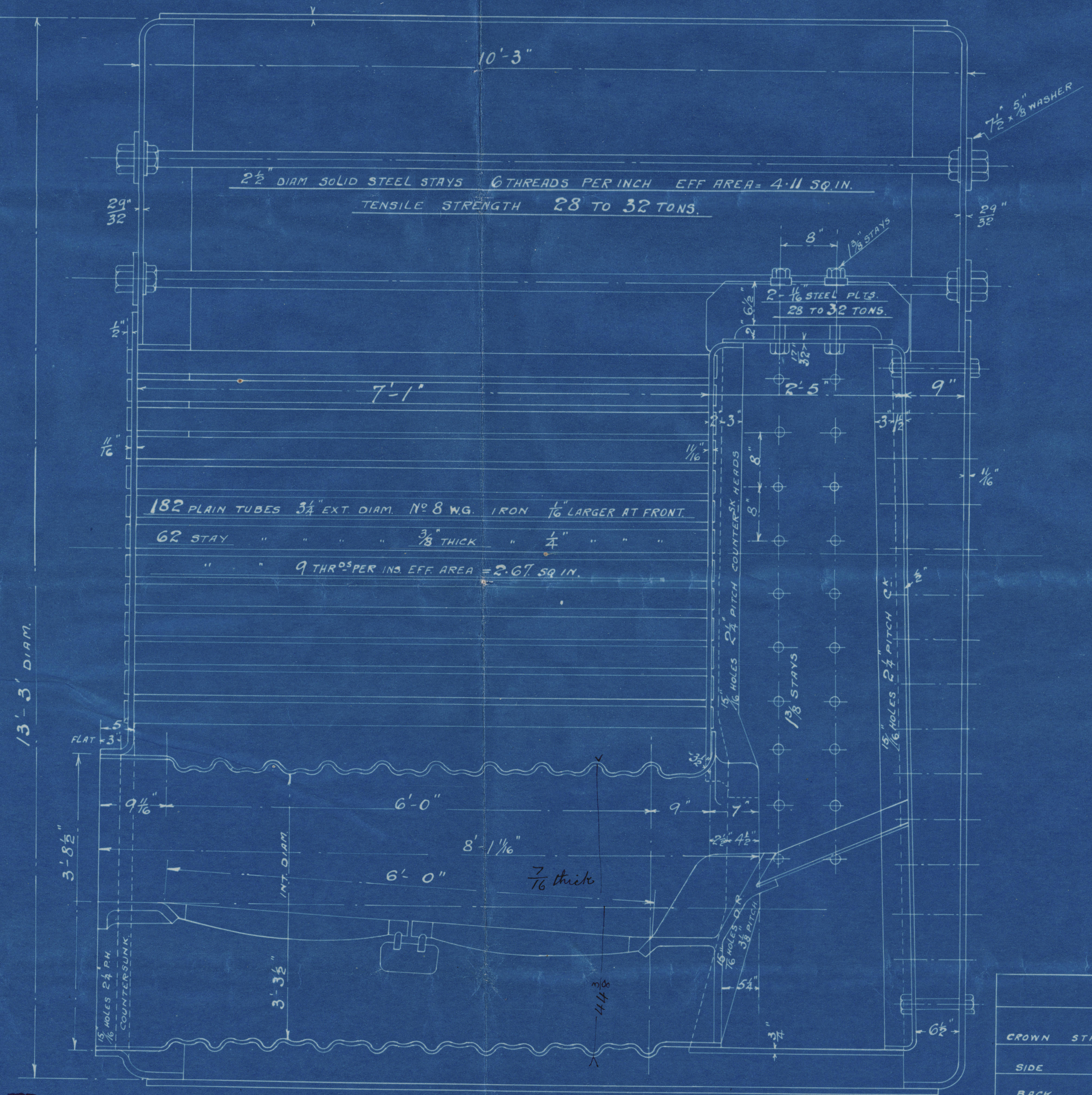
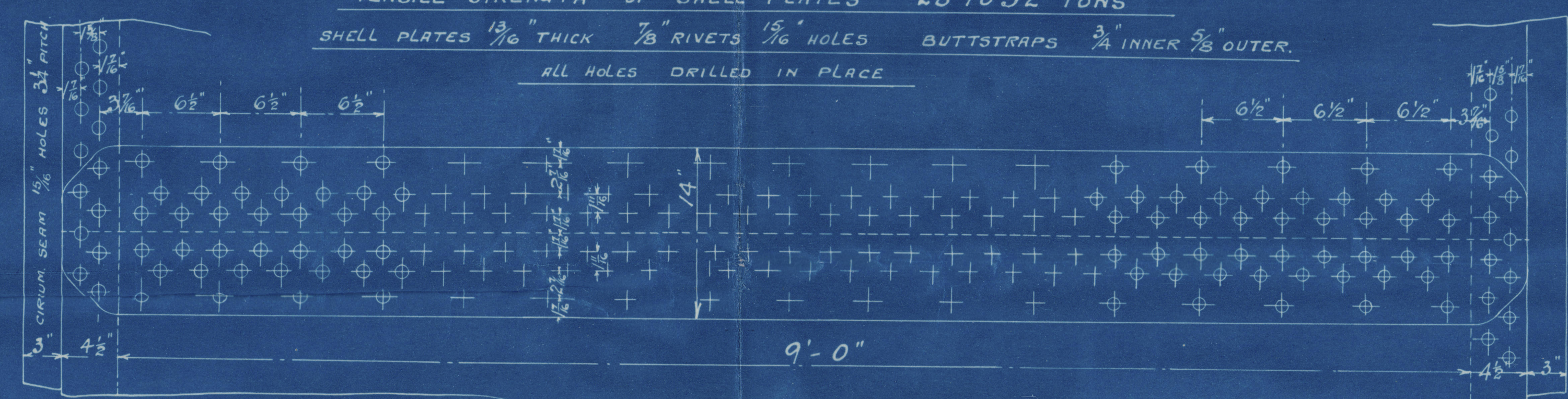


RIGHT & LEFT



LONGITUDINAL SEAM SCALE 1 1/2" = ONE FOOT.

TENSILE STRENGTH OF SHELL PLATES 28 TO 32 TONS  
SHELL PLATES 1 1/8" THICK 7/8" RIVETS 1 1/2" HOLES BUTTSTRAPS 3/4" INNER 5/8" OUTER.  
ALL HOLES DRILLED IN PLACE



FIRE BOX STAYS				
	DIAM.	NO. OF THREADS PER INCH	EFF. AREA	
CROWN STAYS	1 1/8"	9	1.19"	NUTTED BOTH ENDS
SIDE "	1 3/8"	9	1.19"	" " "
BACK "	1 1/2"	9	.96"	" " "
MARGINAL "	1 1/8"	9	1.73"	" " "
TENSILE STRENGTH OF STAYS				26 TO 30 TONS.

W. SIMONS & CO., LTD  
LONDON WORKS,  
RENFREW.

E.P.L.  
13.2.15

W1032-0169





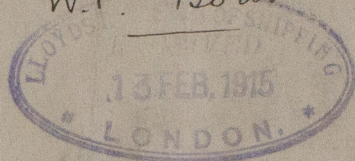
W1032-0169

Amended Plan

Wm Simons & Co Ltd 567. A+B

2 SE Boilers

W.P. 130 lbs.



Mark on each Boiler.

No 13233  
Lloyds Test  
260 lbs  
H.C. 3.9.15

Guararema  
ex

GLASGOW REPORT No. 38507

75 Independence

RETAIN



© 2020

Lloyd's Register  
Foundation