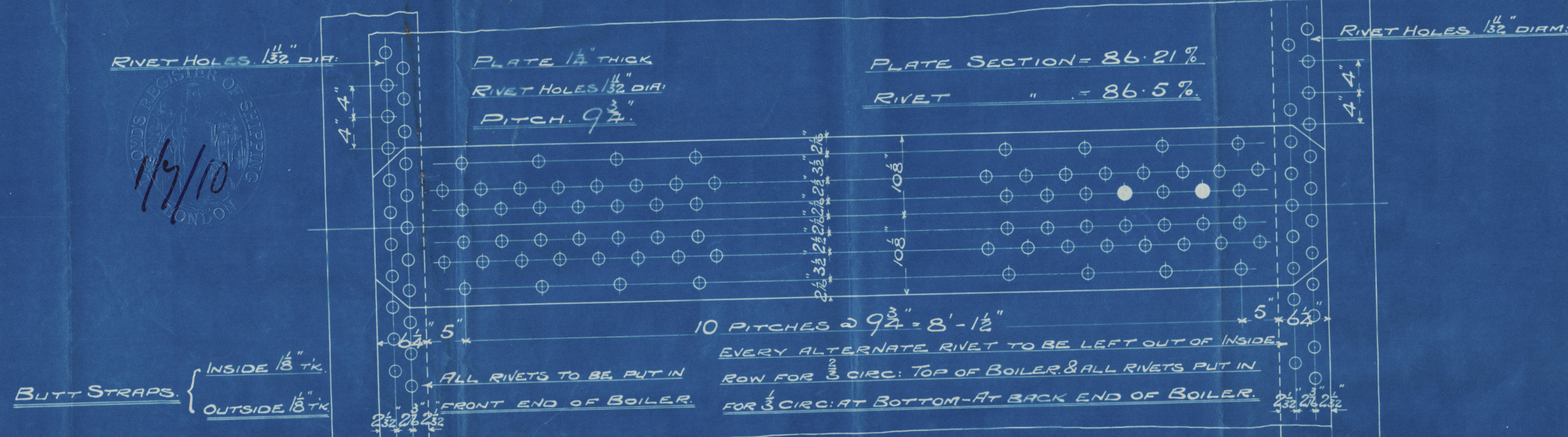


SUNDERLAND ENGINE WORKS

BOILER

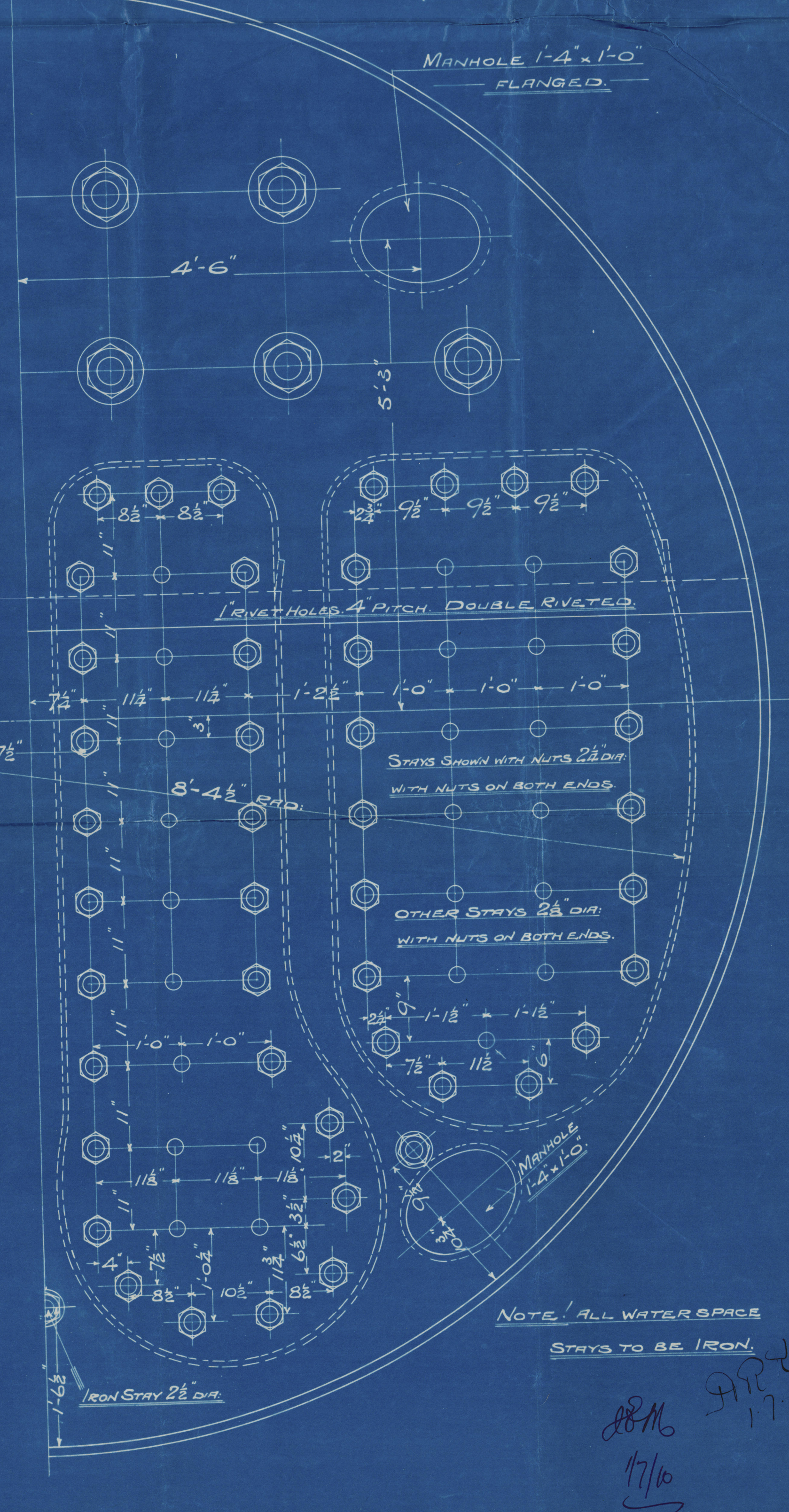
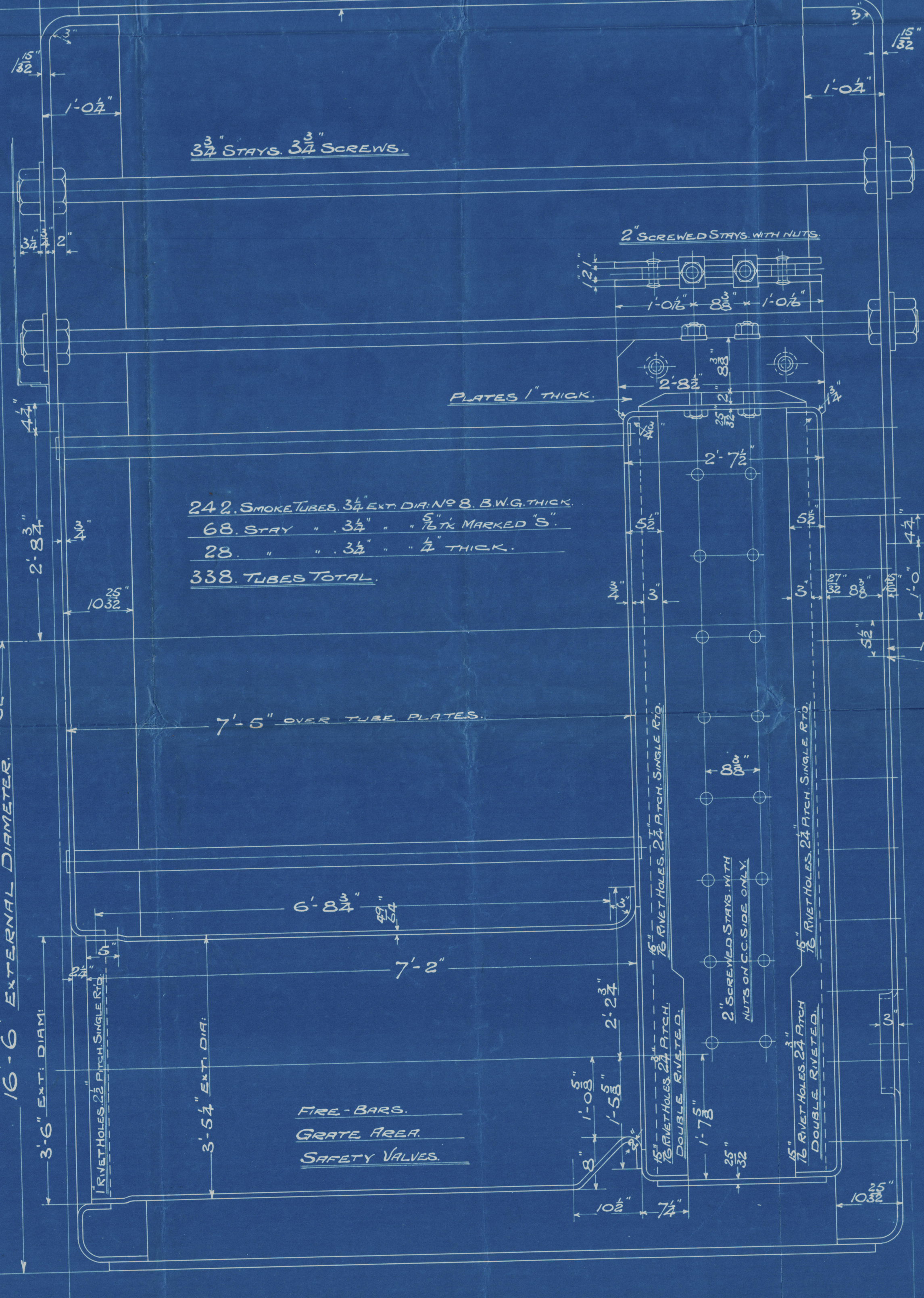
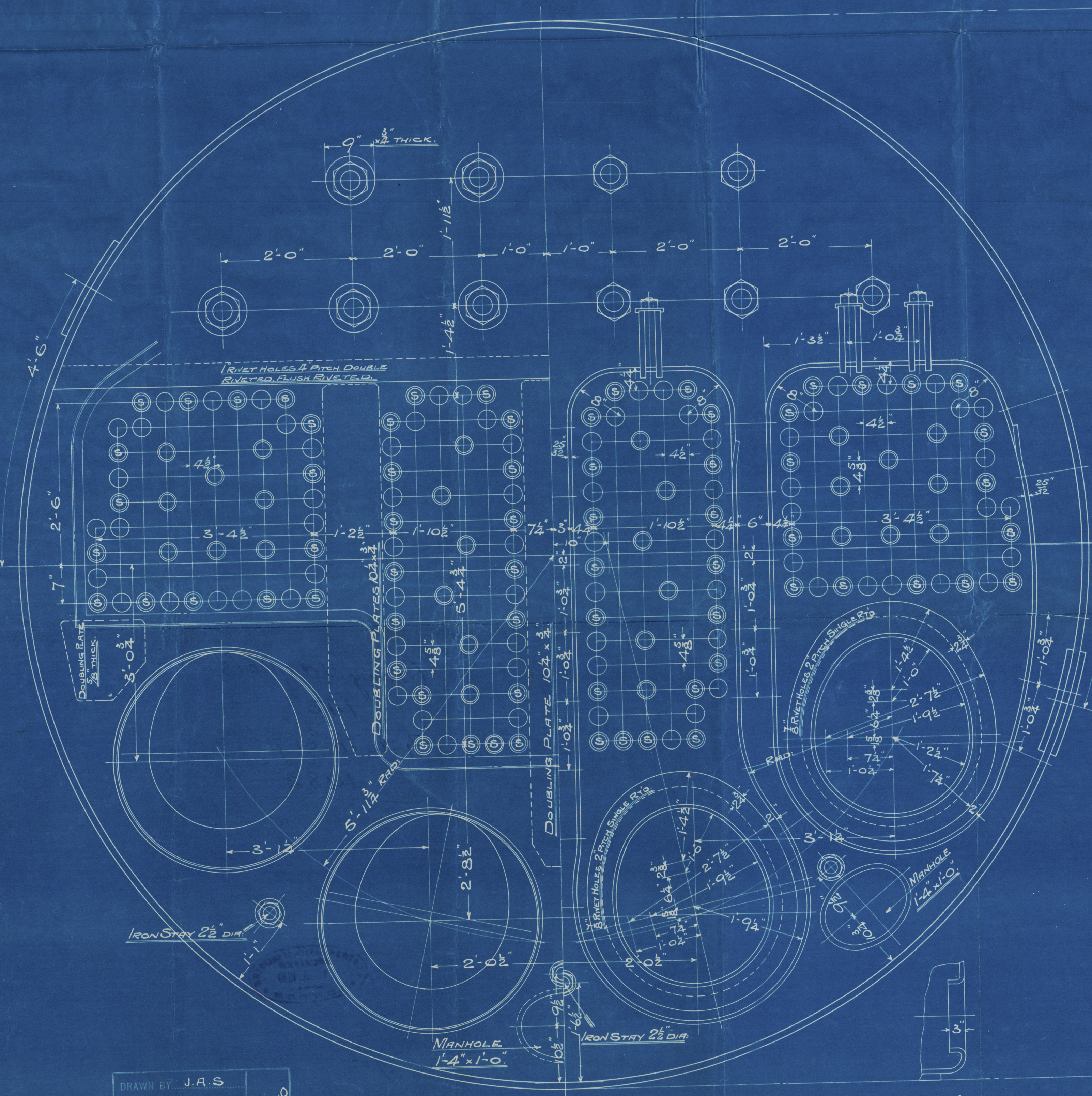
TRACING 3275 SCALE: 1 INCH TO A FOOT SCHEDULE 'L'

WRITTEN DIMENSIONS ONLY TO BE TAKEN



TO PASS LLOYD'S SURVEY.

SHELL	22x28 1/2 (20-2) 86.21	180 LBS PER B
WORKING PRESSURE	180	" "
TEST	360	" "
HEATING SURFACE ON TUBES	2133 SQ. FT.	" "
" " OTHER PARTS	568	" "
" " TOTAL	2701	" "
EXT. FRONT TUBE PLATE	2651	" "
EFFECTIVE AREA OF STAYS		
3 1/2" STAY TUBES 1/2" T.K. 9 THREADS PER IN.	2.17	SQ. INS.
3 1/2" " " 1/2" " " 1.64	"	"
3 1/2" MAIN STAYS 6	9.82	"
2 1/2" " " 6	4.11	"
2 1/2" SCREENED " 11	3.58	"
2 1/2" " " 11	3.17	"
2 " " " 11	2.79	"
ALL PLATES, RIVETS & STEAM SPACE STAYS - STEEL		
ALL OTHER STAYS & TUBES - WROUGHT IRON		
HOLES TO BE DRILLED IN PLACE AFTER BENDING		
TENSILE STRENGTH OF SHELL PLATES NOT LESS THAN 28 TONS		
" " GIRDER	28	"
" " STEEL MAIN STAYS	28	"



DRAWN BY J.A.S.
CHECKED BY J.A.S.
TRACED BY J.A.S.
CHECKED BY J.A.S.
TAKING NO 3275

SECTION ON MANHOLE

CONTRACT 1959.2 OFF.
CONTRACT 1982.2 OFF.

Graig Taylor's

143

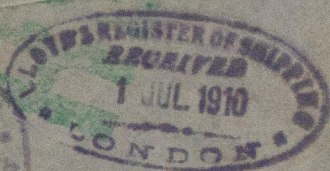
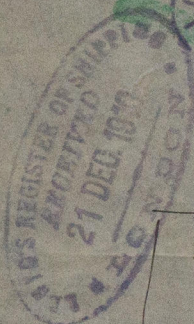
H.E. M Eng 60th

1982

duplicate of 1959.

S. S. Amicus ^{Cygnal}_{ex}

SUNDERLAND. Rpt. 24750



LLOYDS TEST.
No 28 1/2
3666
9-11-10 S.J.S.



© 2020

Lloyd's Register
Foundation