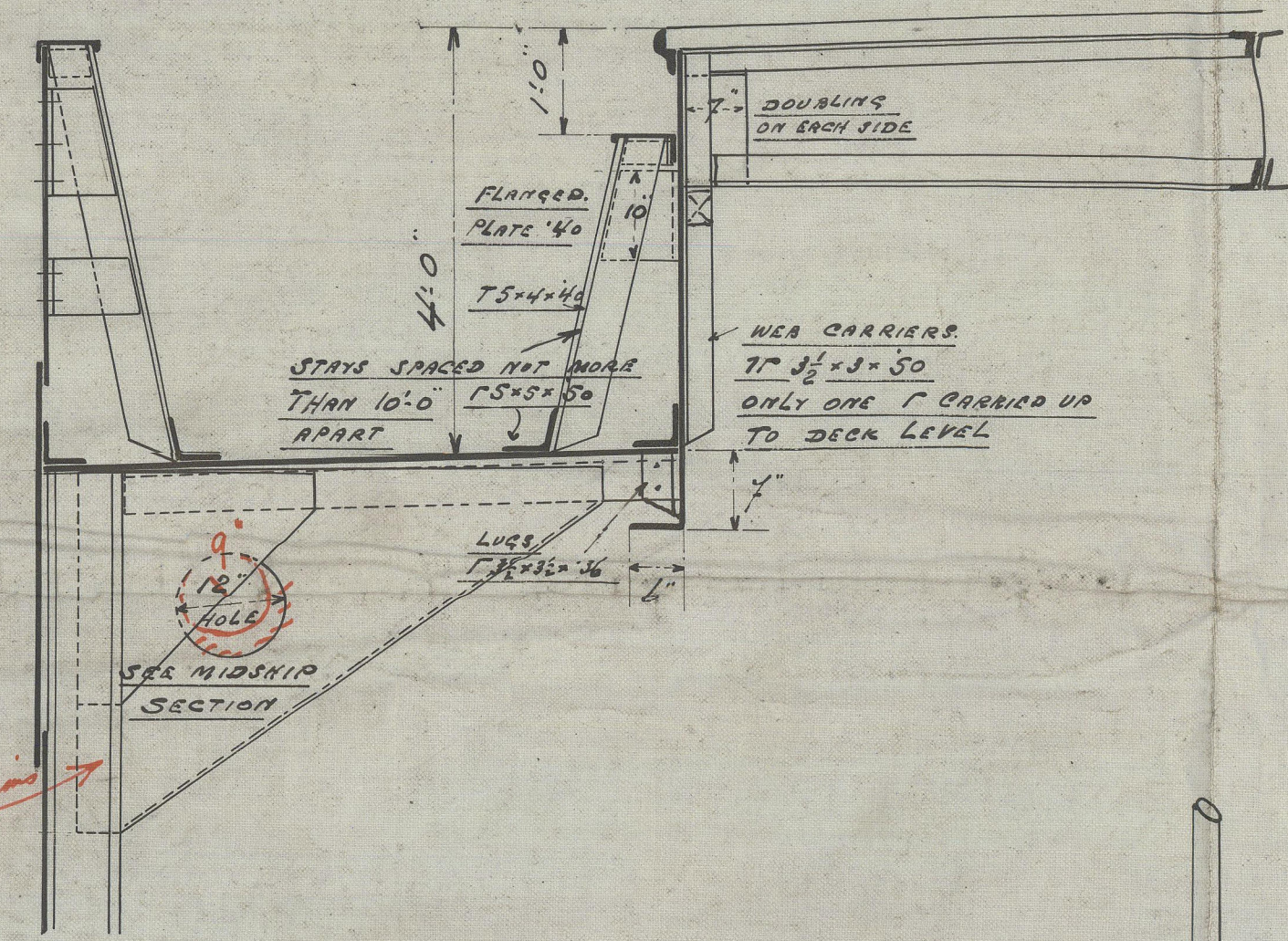
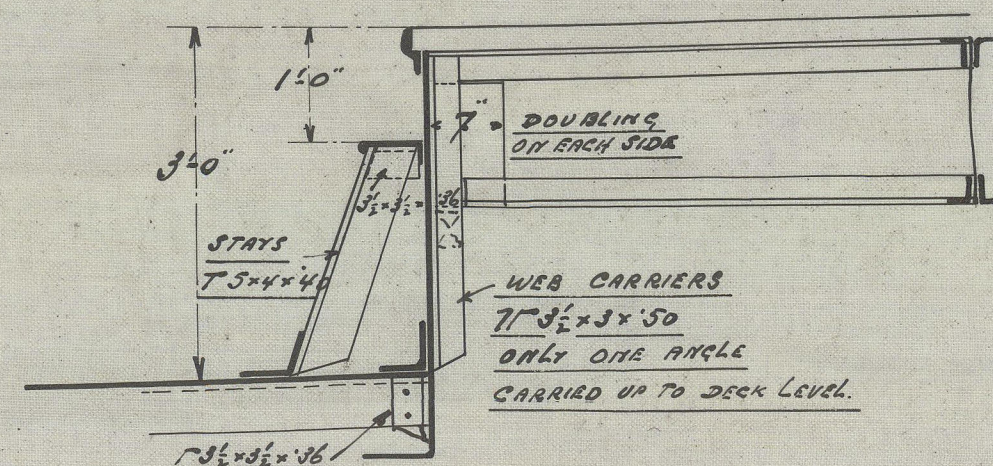


6/6/24

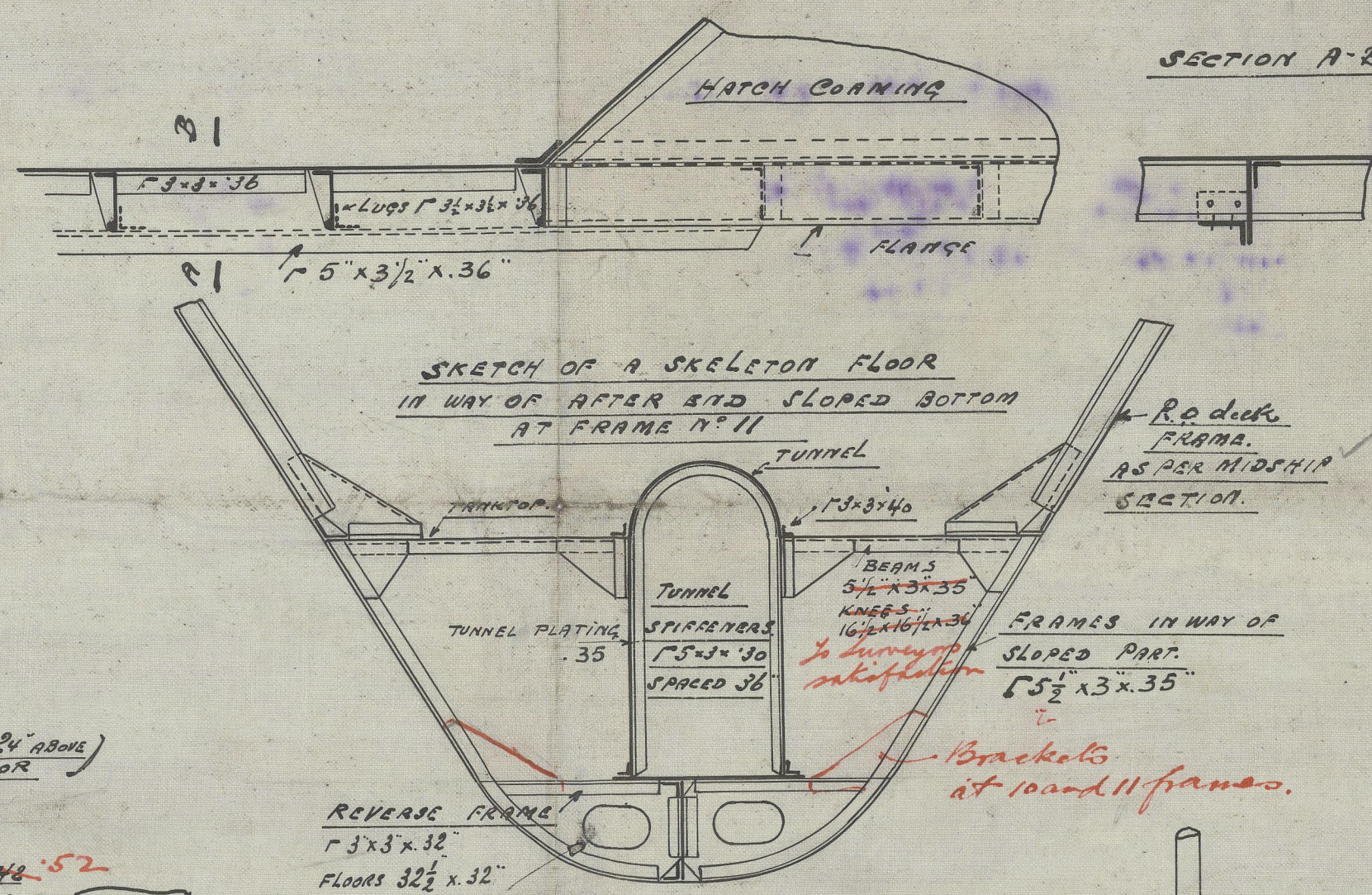
TRANSVERSE SECTION ALONGSIDE
CARGO HATCH
IN WAY OF MAINDECK



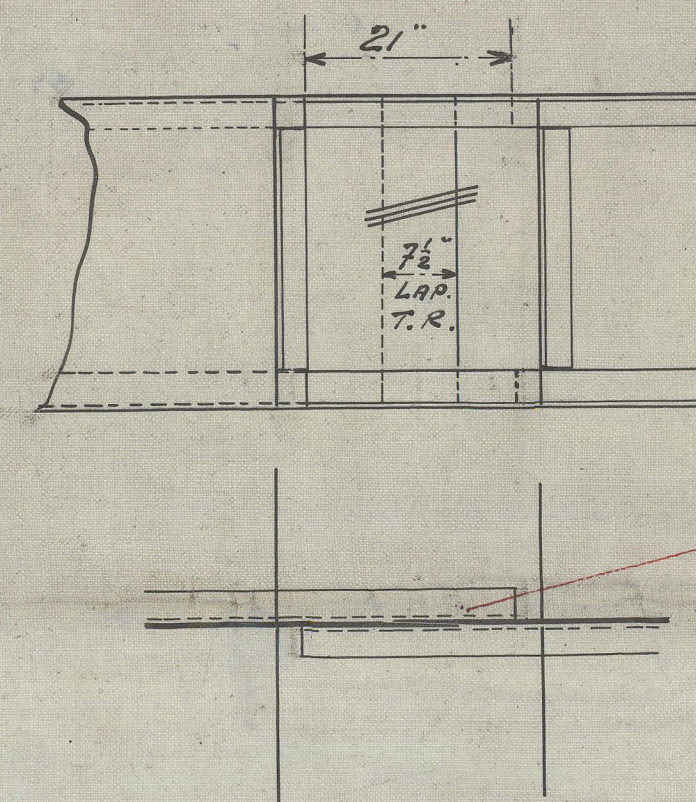
TRANSVERSE SECTION ALONGSIDE
CARGO HATCH
IN WAY OF RAISED QUARTER DECK



SIDER AT SIDE OF HATCH COAMING



METHOD OF FITTING
CENTRAL KEELSON



PROFILE & DECK PLAN

SCALE 1/100"

LLOYD CLASS 100 A1

FULL SCANTLING VESSEL

RAISED QUARTER DECK TYPE

PRINCIPAL DIMENSIONS

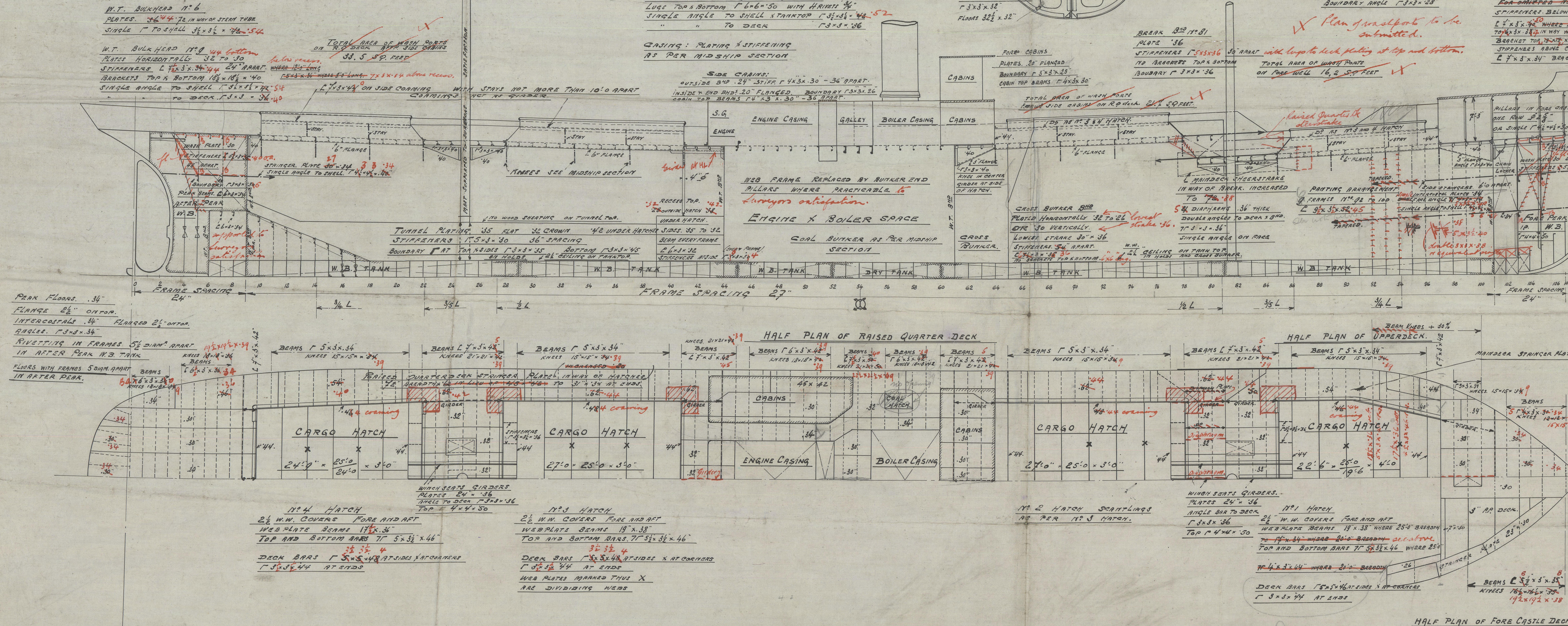
LENGTH BETWEEN P.P. 240'-0"

BREADTH MOULDED 37'-0"

DEPTH MOULDED TO MAINDECK 17'-9 1/2"

DEPTH MOULDED TO R.Q. DECK 21'-9"

SSN# 89 CLASS 1
PLAN# 2



CHAIN LOCKER BULKHEAD
28 PLATING
STIFFENERS 7/8\"/>

FORE PEAK FLOOR 3/4\"/>

THE RIVETS IN THE FRAMES AND PLATING FORMING THE FLAT OF BOTTOM, SPACED 5\"/>

DECK FRAMES ARE 7/8\"/>

PEAKS AND STIFFENERS WITH PLATING 6\"/>

6.6.24

ANTWERP ENG^{rs} CO
Surreybrook
ex

LAKE LAND No 89

PROFILE

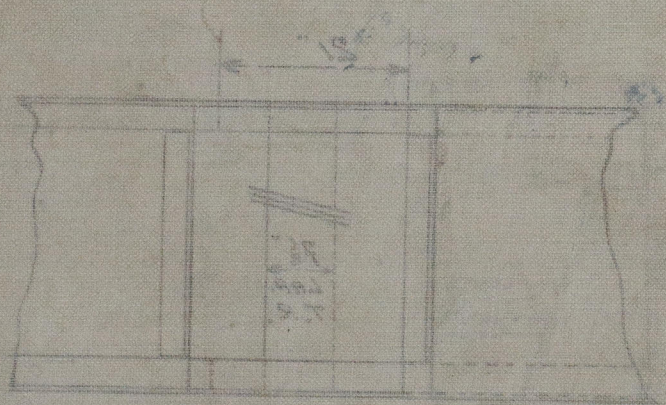
Otterburn

Le fordams

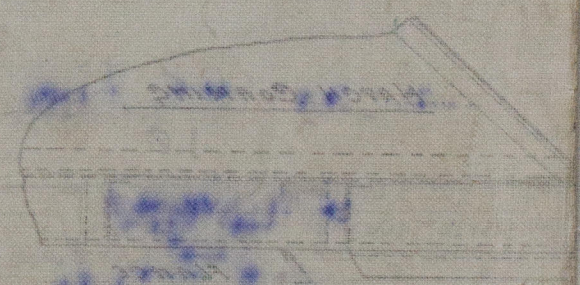
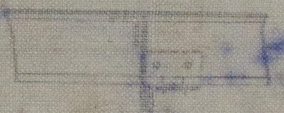
Oct 1861.

11029-0191

Method of fitting
center section



B-A north



© 2020

Lloyd's Register
Foundation