

# GENERAL ARRANGEMENT

## PRINCIPAL DIMENSIONS.

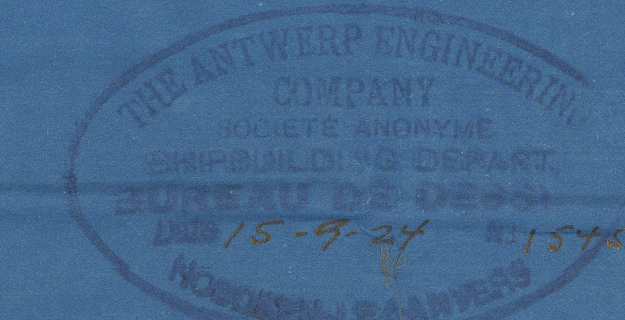
LENGTH BETWEEN P.P. 240'0"

BREADTH MOULDED 37'0"

DEPTH MOULDED TO MAINDECK 17'3 1/2"

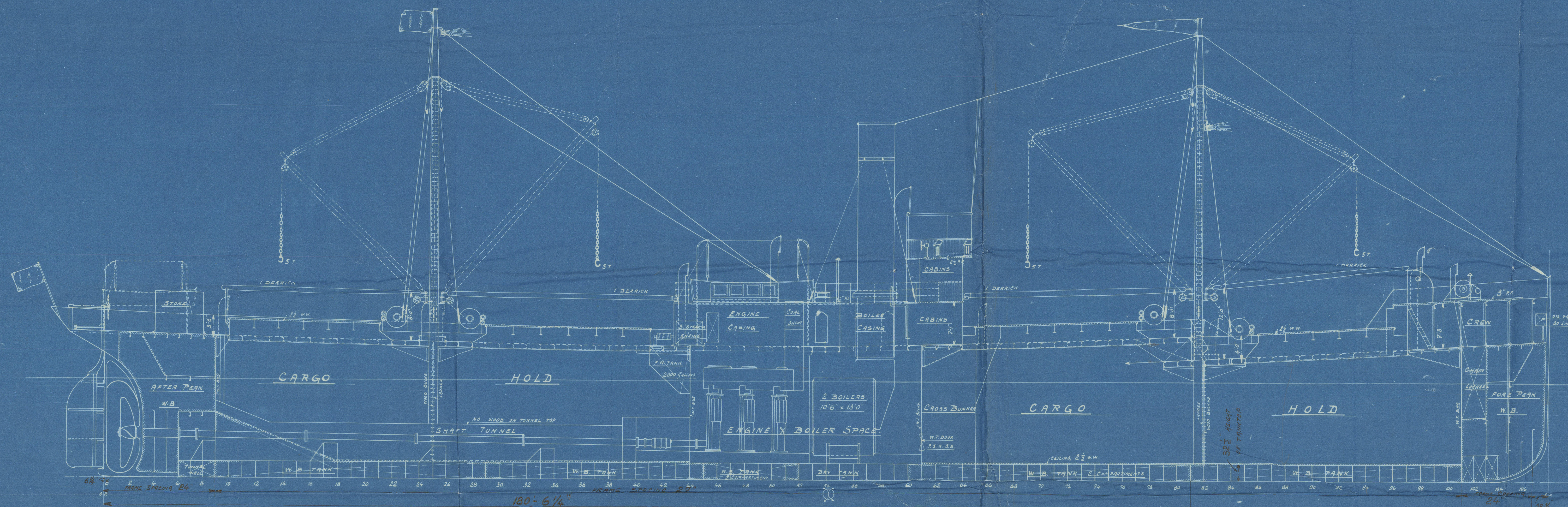
DEPTH MOULDED TO R.Q. DECK 21'9"

SCALE 1/100 OF FULL SIZE.

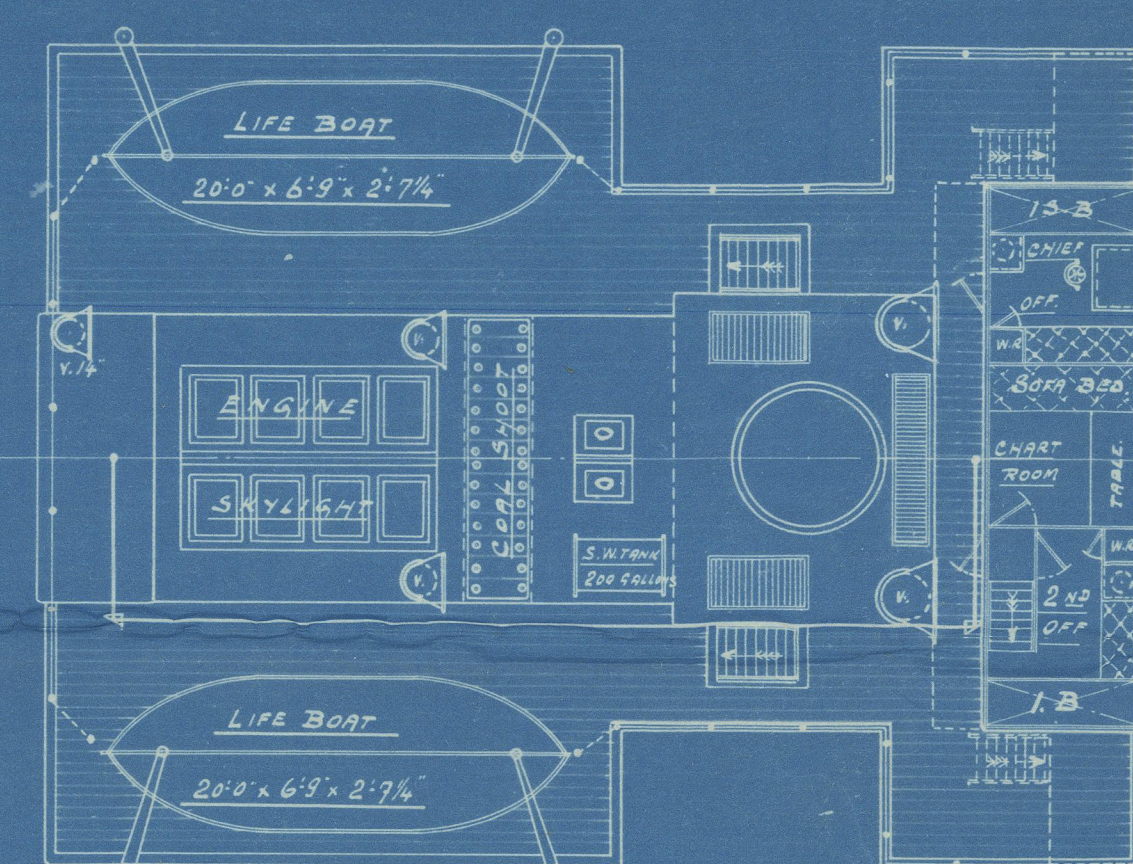


SSN<sup>o</sup> 89 CLASS 1  
PLAN<sup>o</sup> 5

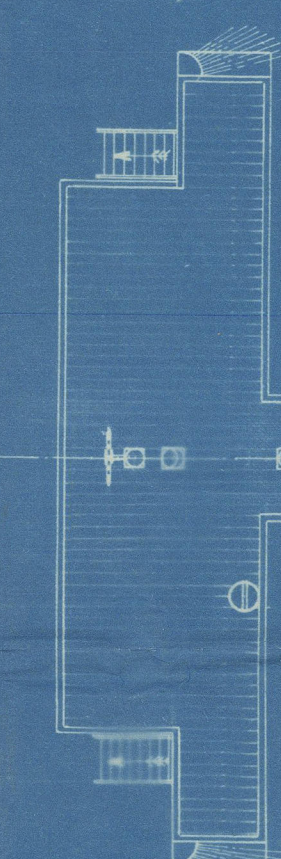
## ELEVATION (NO RAKE ON MASTS & FUNNEL)



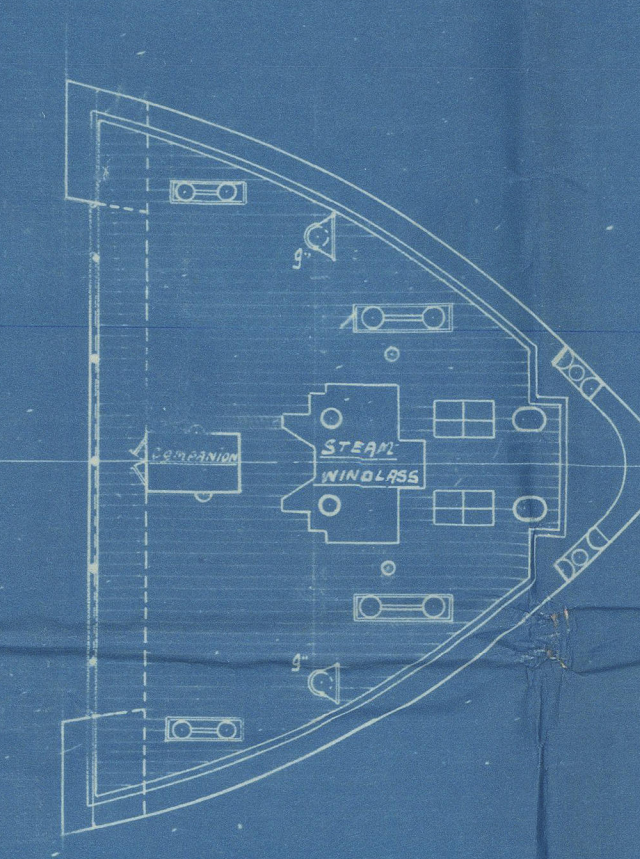
## BOTBDECK & CASING TOP



## FLYING BRIDGE

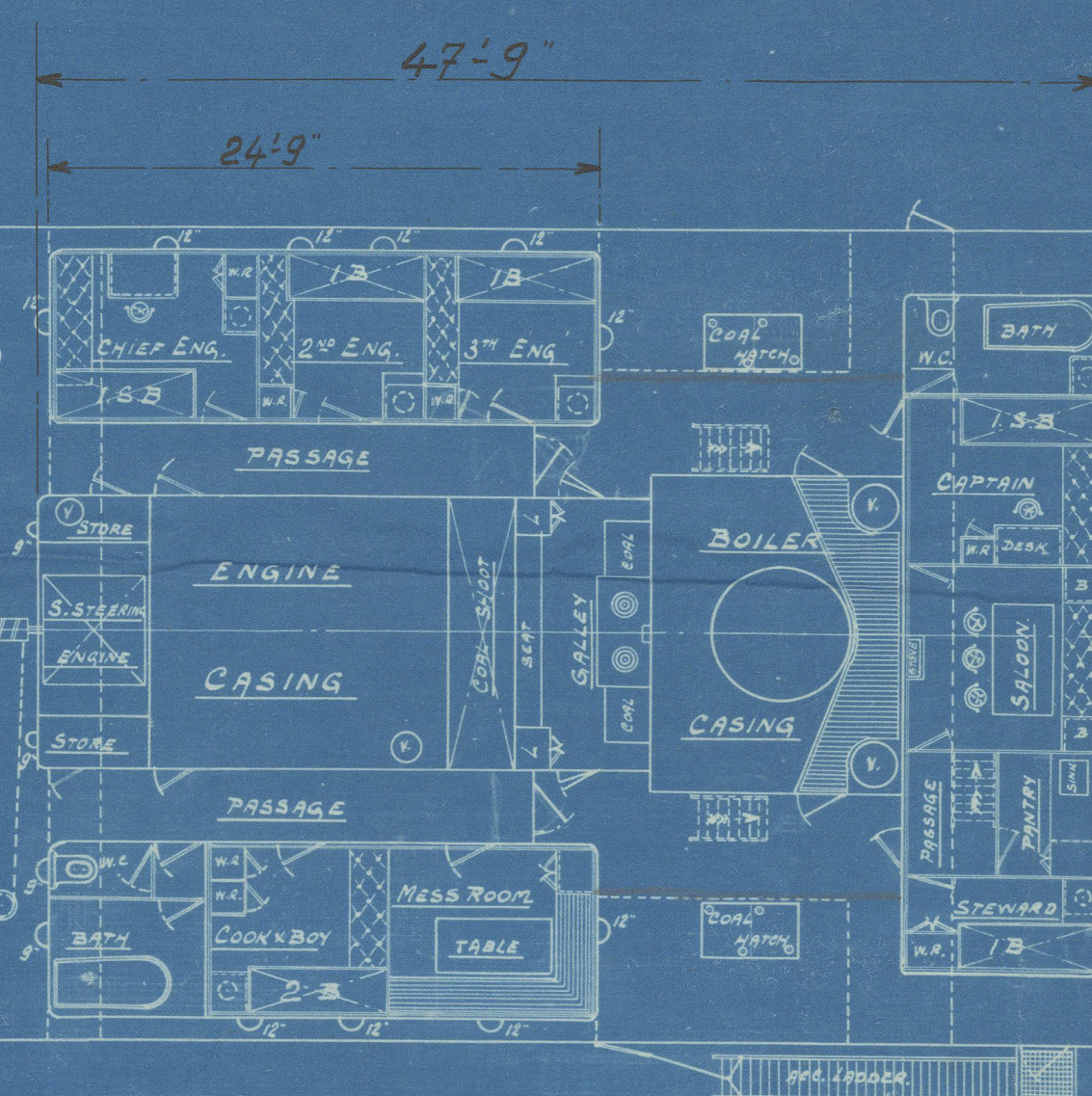
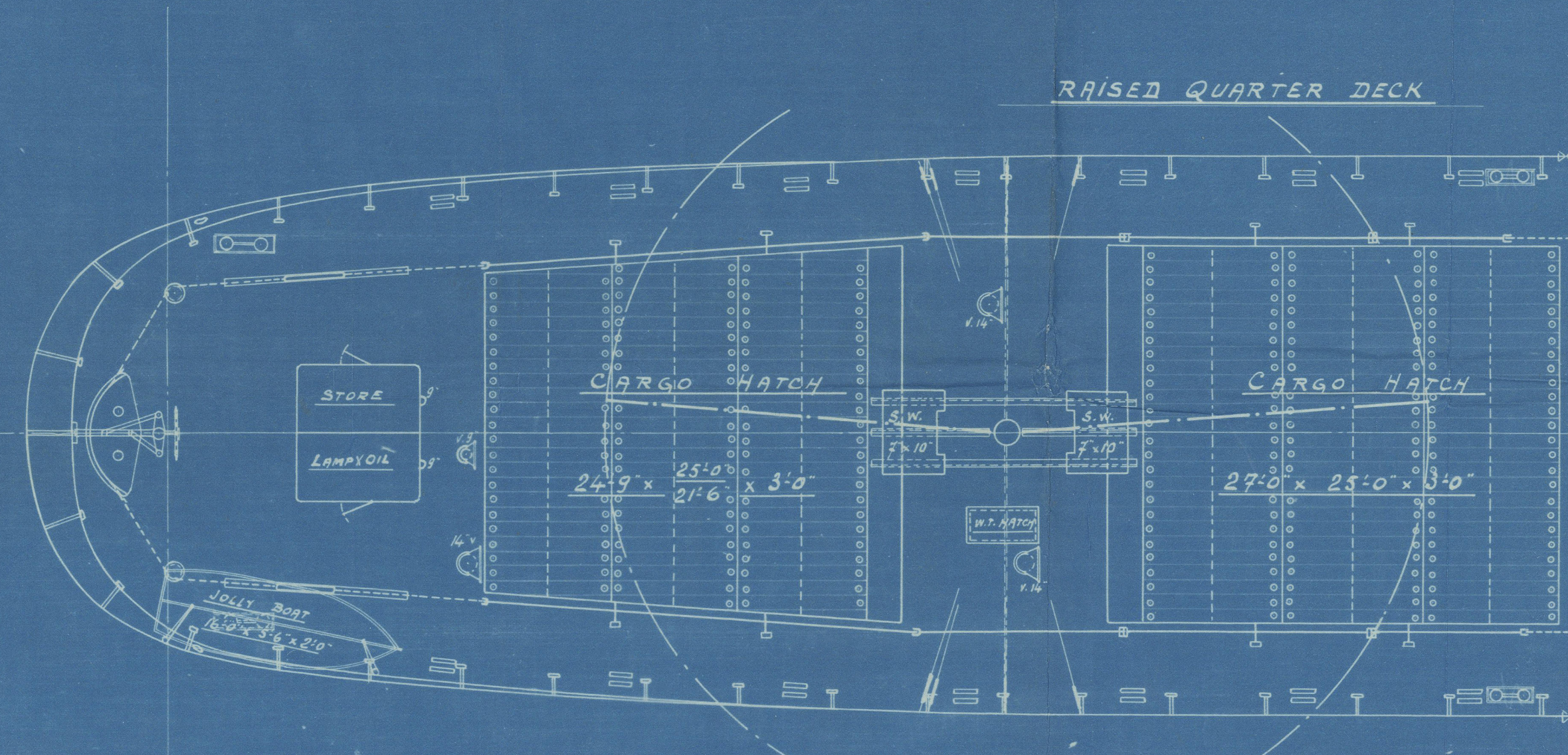


## FORE CASTLE DECK

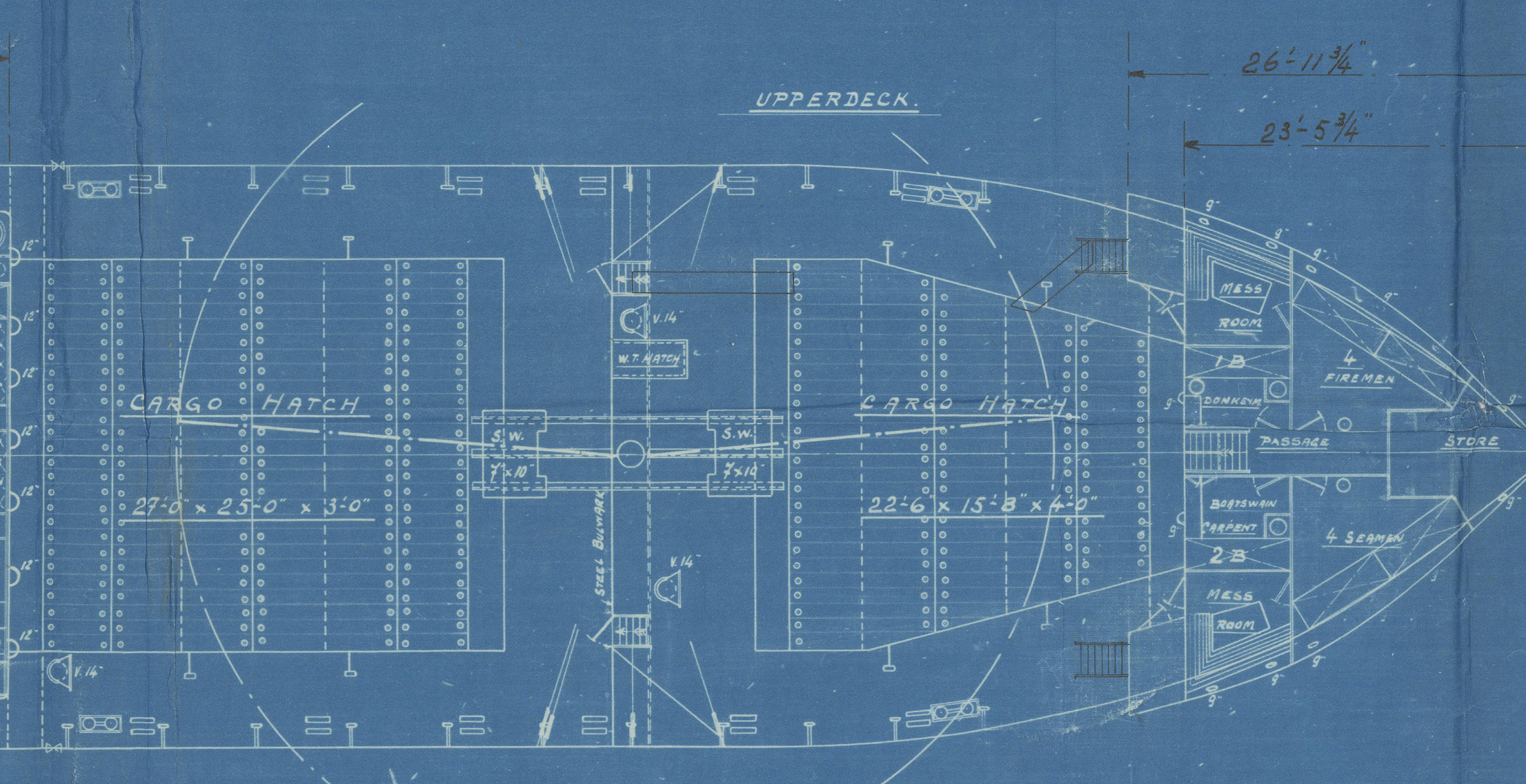


SHEER FORWARD: 68"  
SHEER AFT: 34"  
SHEER FOR 1/2 LENGTH FORWARD: 88"  
SHEER FOR 1/2 LENGTH AFT: 12"  
CAMBER OF BEAM: 9 1/2"  
APPROXIMATE UNDER DECK TONNAGE: 1235 T.

## RAISED QUARTER DECK



## UPPERDECK





Antwerp Engineering Co

Nº 89

General Arrangement Plan

Showing

Reboard Particulars.

Surreybrook

8/15 Jordans

Ant 13631

REMAINDER



© 2020

Lloyd's Register  
Foundation

L1029-0189