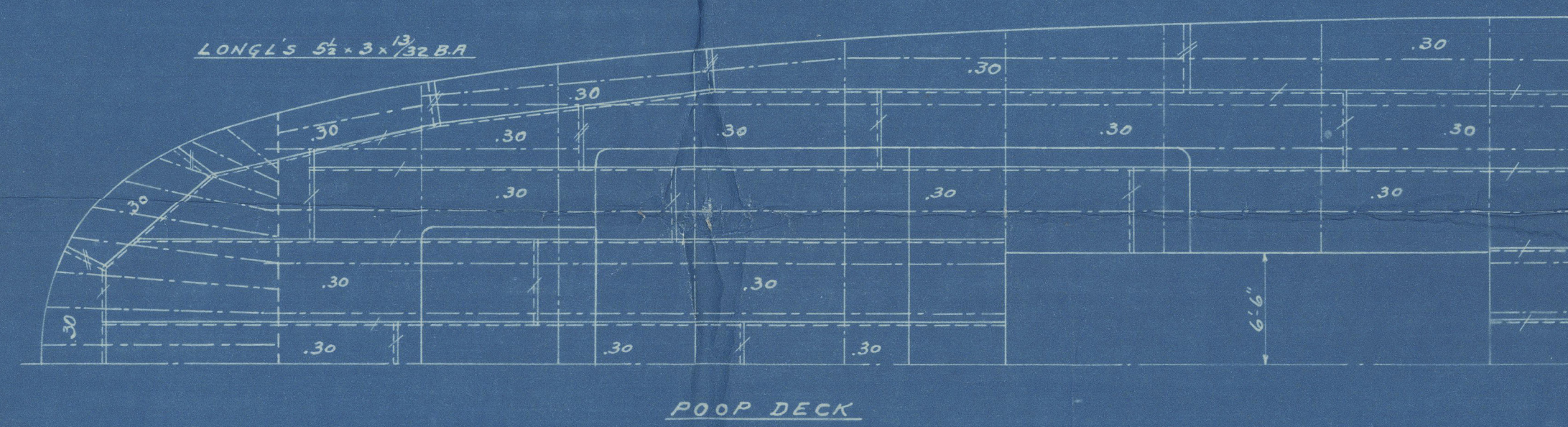
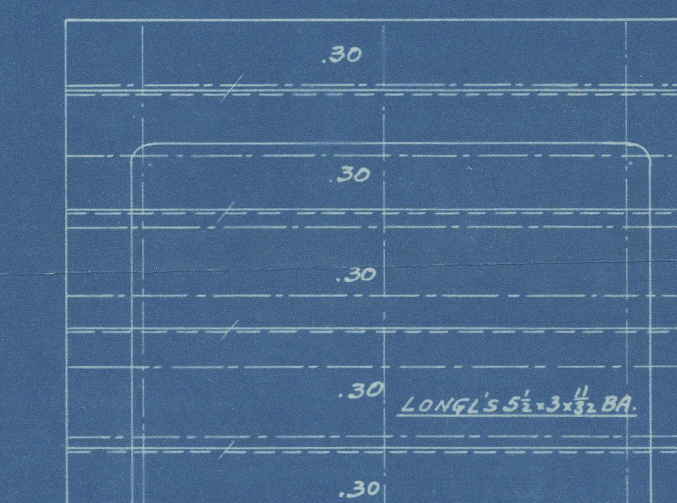


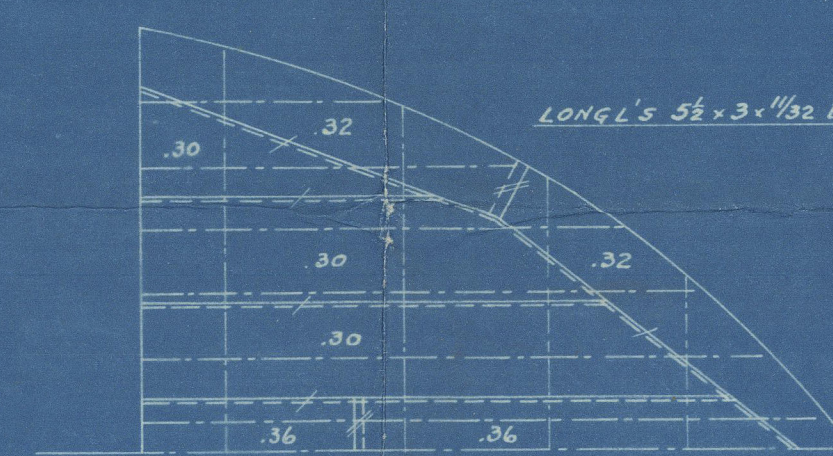
BOTTOM LONGS TO HAVE DOUBLE ATTACHMENT ANGLES TO SHELL ON PART OF FLOOR FORD OF SHIP ON ACCOUNT OF FINENESS OF FORM  
SPACING OF LONGS TO BE GRADUATED FROM 30" TO 21" AT COLLISION BULWARD  
SIDE TRANSVERSE SHELL ATTACHMENT 65° SINGLE ANGLE WITH BRACKETS AS INDICATED



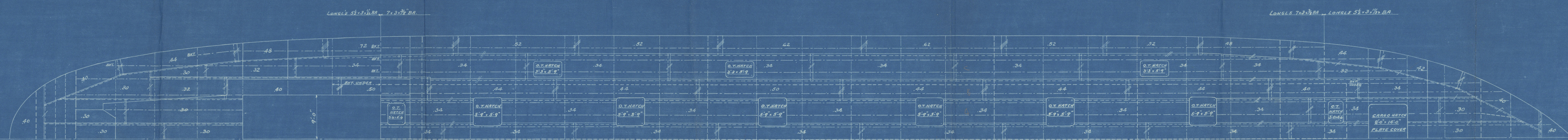
POOP DECK



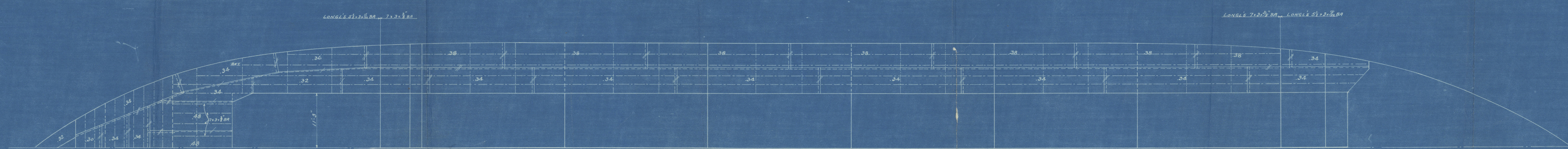
BRIDGE DECK



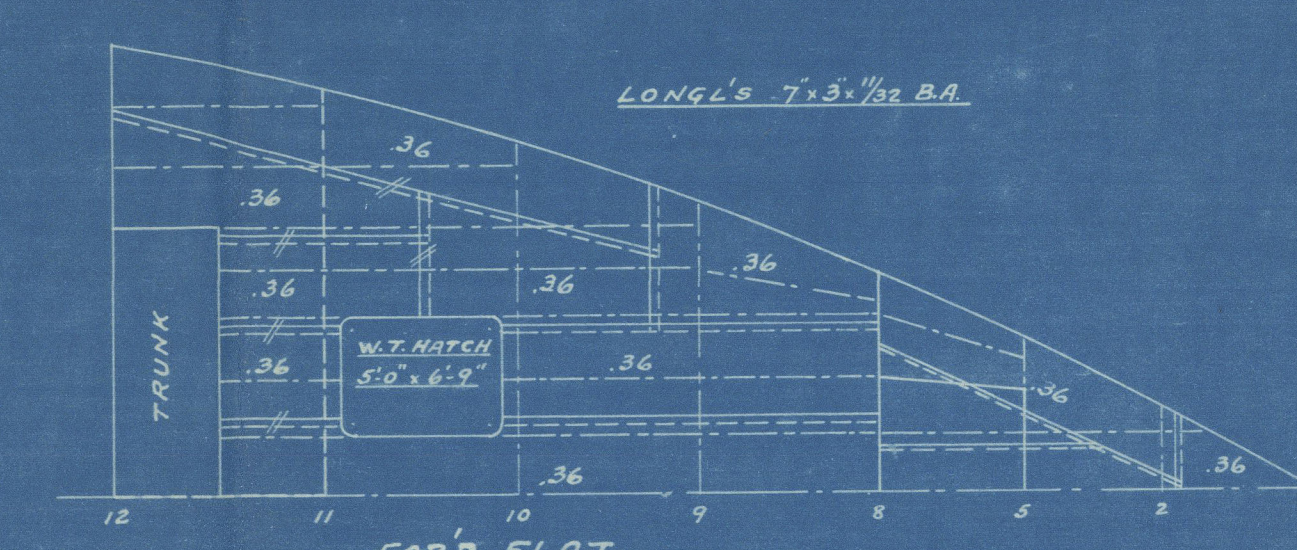
FORECASTLE DECK



UPPER DECK



TANK DECK



FOREPEAK

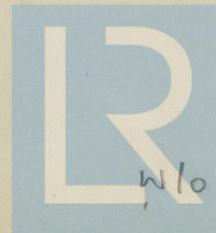
TEXAS STEAMSHIP CO.  
CONSTRUCTION DEPT.  
MOTOR TANK VESSEL  
LENGTH BET. PERP. 315'-0"  
" OVERALL 328'-0"  
BREADTH MOULDED 43'-6"  
DEPTH 27'-6"  
SHERWOOD SYSTEM PATENT  
CLASS + 100-A1 - LLOYDS  
GENERAL ARRANGEMENT  
HULL NO. 14

COPY  
Approved  
JAN 21 1917

NEW YORK FEB. 5 - 1917

DWG. H. 2  
Foundation





© 2020

Lloyd's Register  
Foundation

W1029-2117



Texas No 14

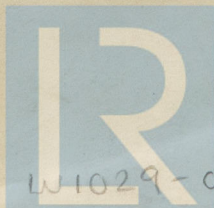
Profile + Dukes

13-3-17

"Solitaire"

Box 1315.

RETAIN



© 2020

Lloyd's Register  
Foundation

W1029-0117