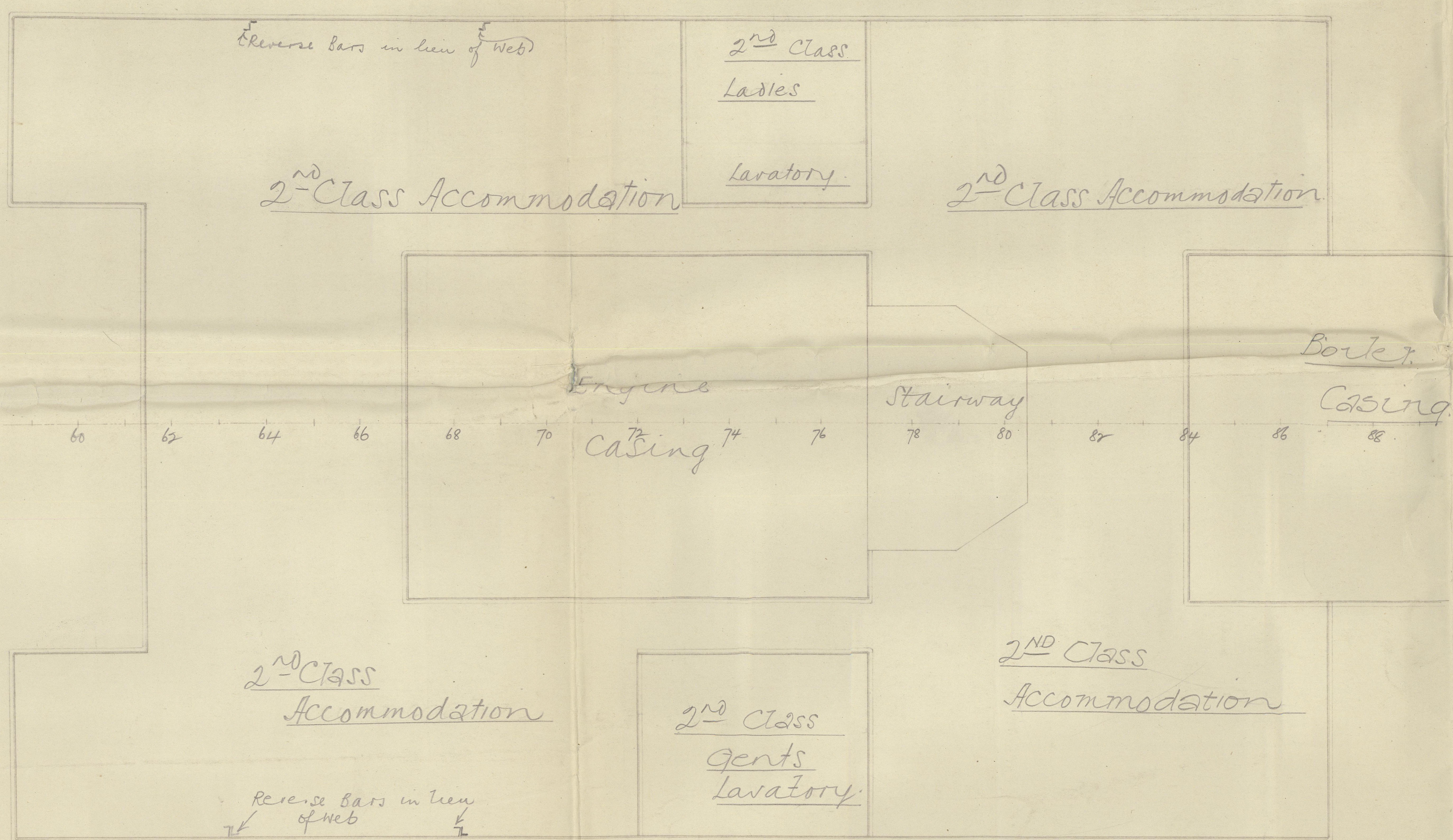
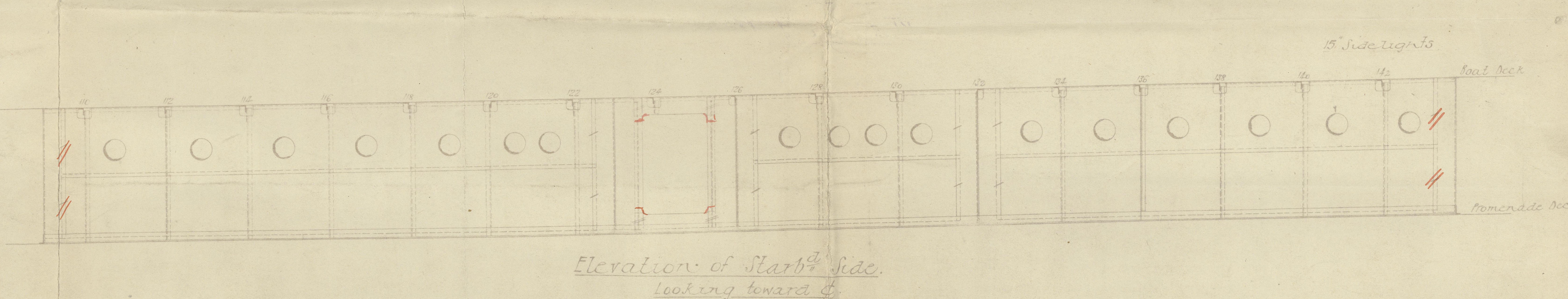
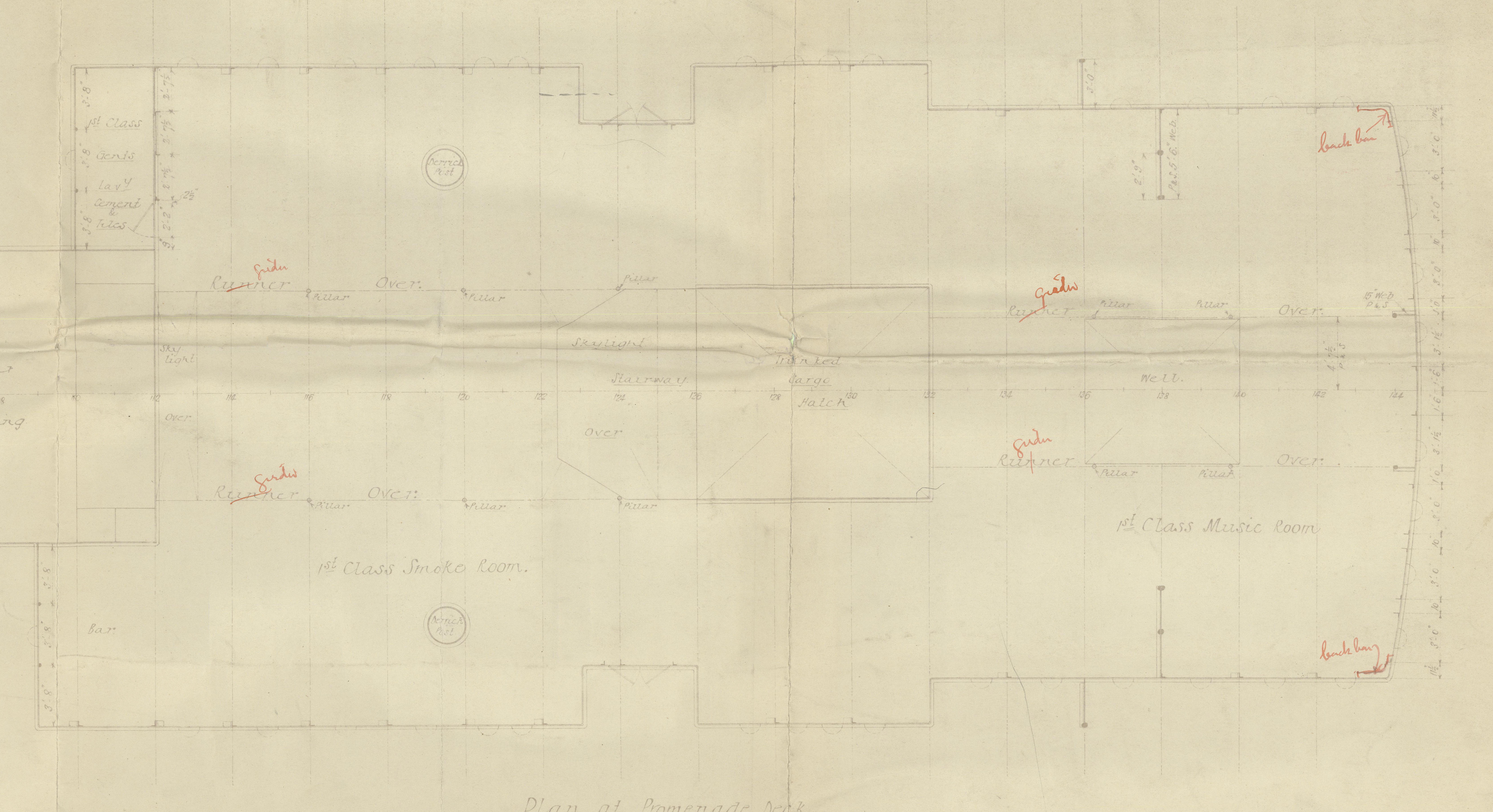
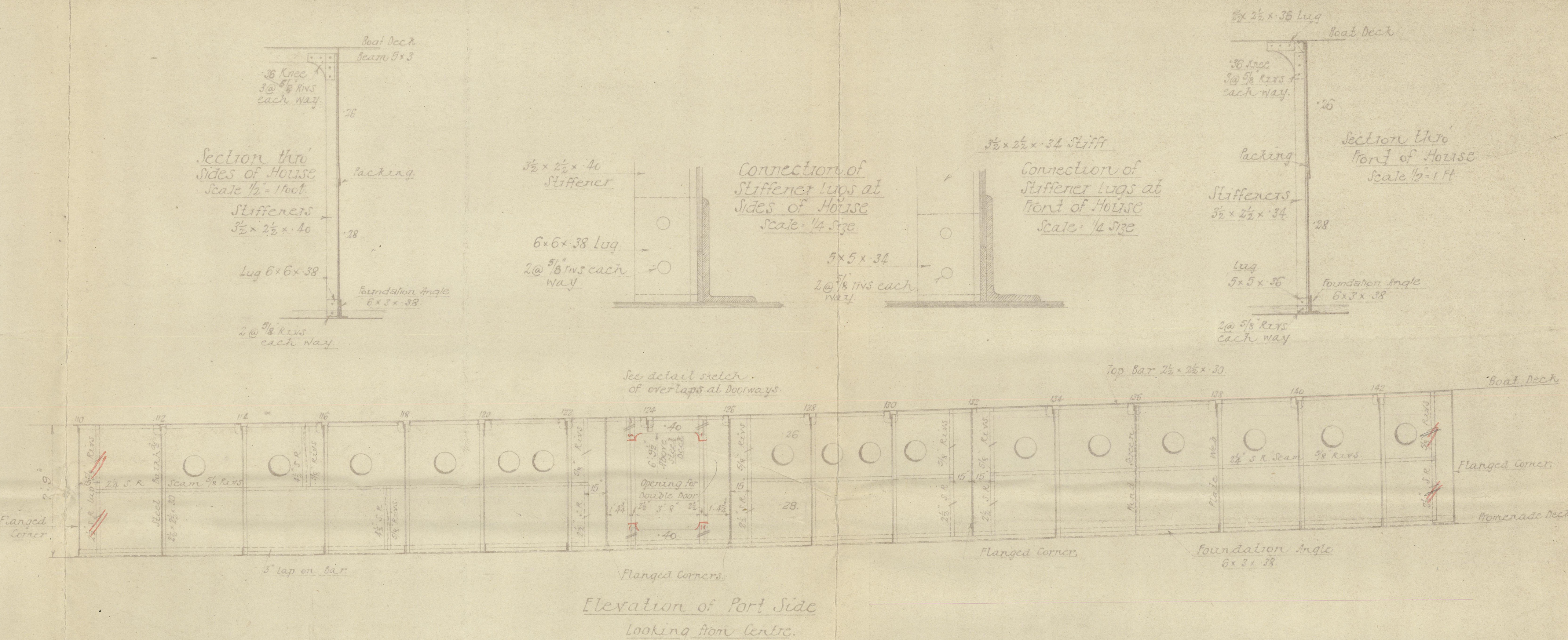
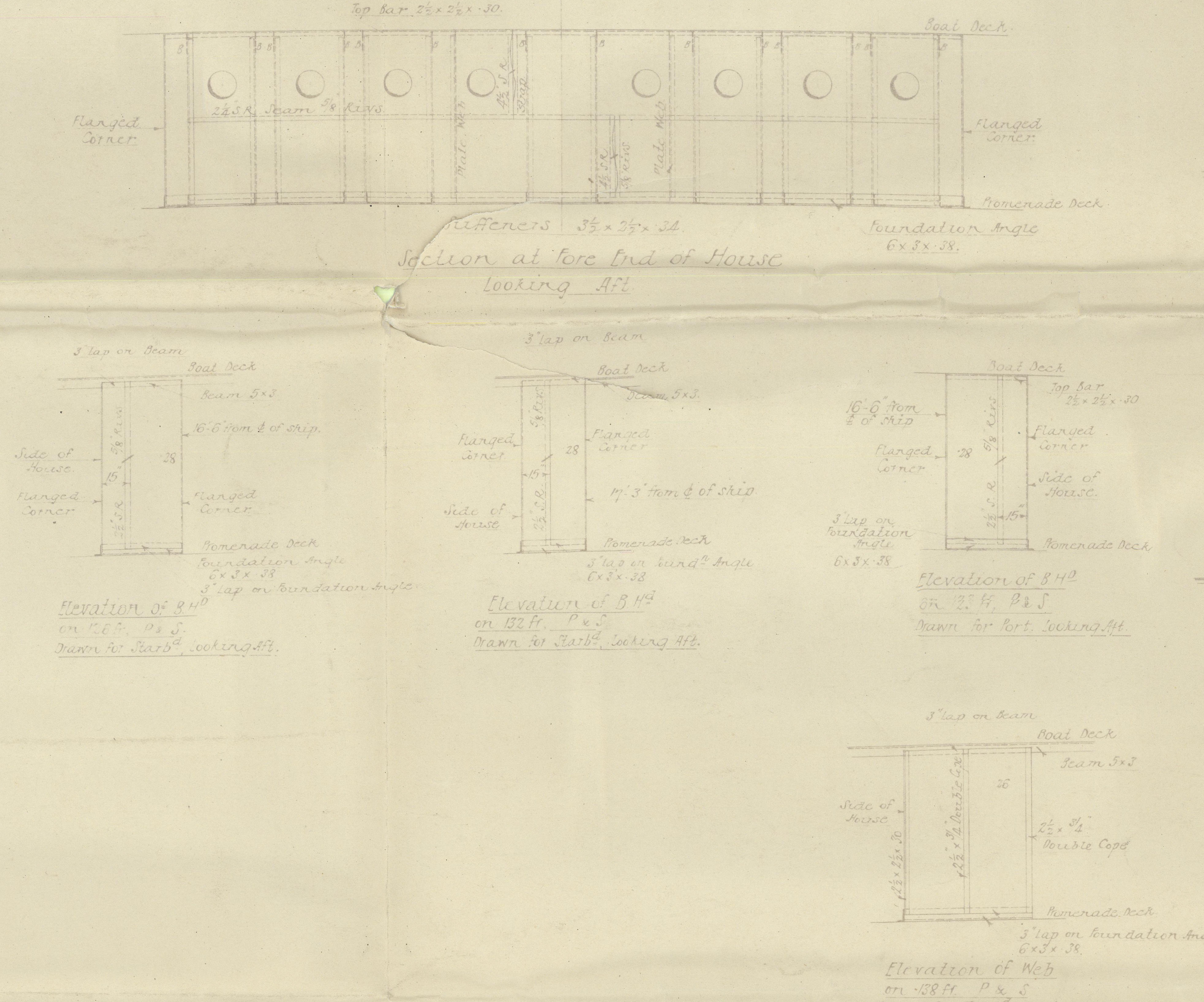
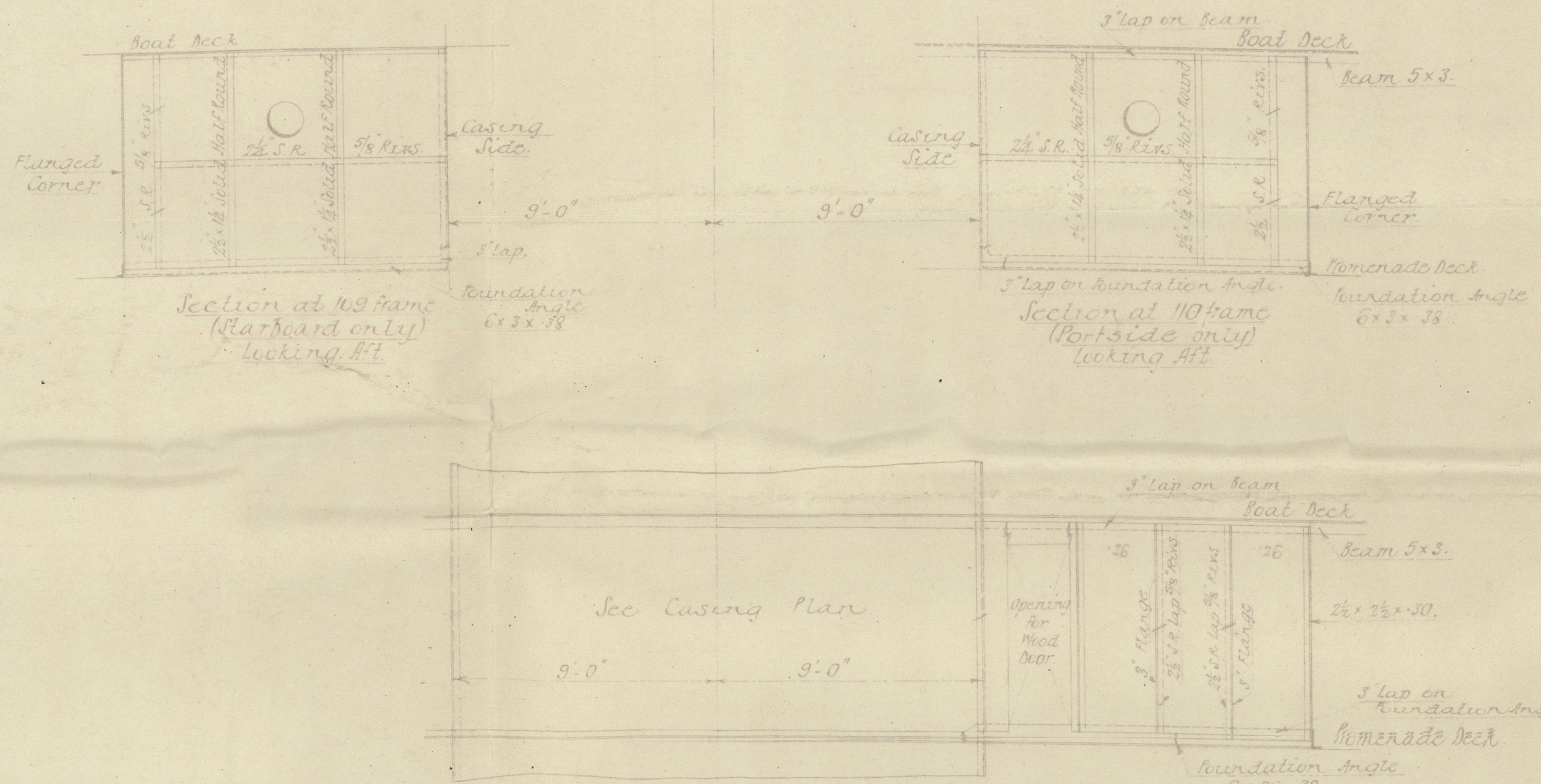


7.12.22.

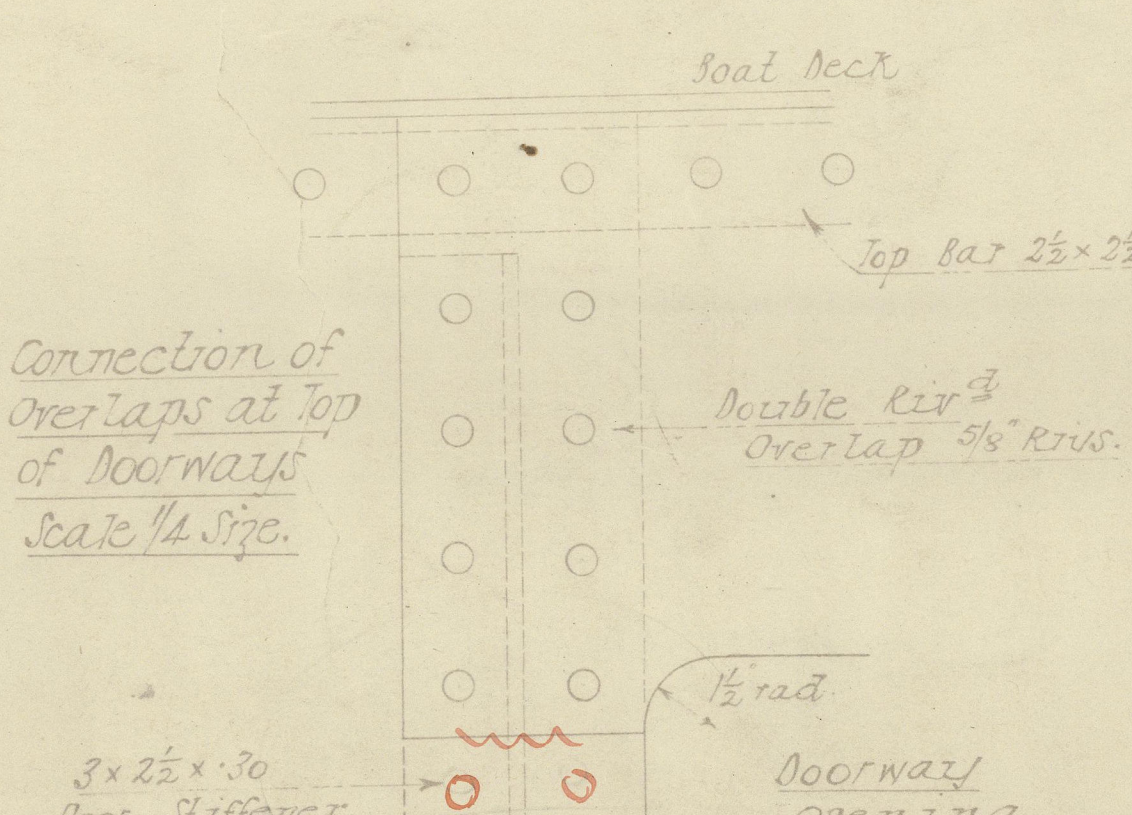
# Nº 529 & 30. Deckhouse on Promenade Deck. Scale 1/4" = 1 foot.



Scantlings similar  
to Forward House  
Plan at Promenade Deck.

Reveling List

House Foundation to Deck House	5 Diags apart	5
Partitions	(Inter M)	5
	(NEN M)	4
Top Angles to House & Deck (where masts exposed)	5	5
	Net	1/8
Corner Angles (where masts are)	5	5
	Net	1
Seams & Bulbs (caulked)	5	5
	Net	6
Overhangs in way of doors (at hull)	6	6
Stiffeners to plating	4	4
Deckhouse to beam above	5	5
Partitions	6	6



7.12.22





529-30

Deck House On Promenade deck



© 2020

Lloyd's Register  
Foundation



21  
Deckhouse on Promenade OK

529-30

Hawthorn Leslie + Co

S.S. "Halma"  
NEWCASTLE ON TYNE.  
Report No. 77045.

S.S. "Selawa"  
NEWCASTLE ON TYNE.  
Report No. 77825

REMAIN



© 2020

Lloyd's Register  
Foundation

W1029-0002