

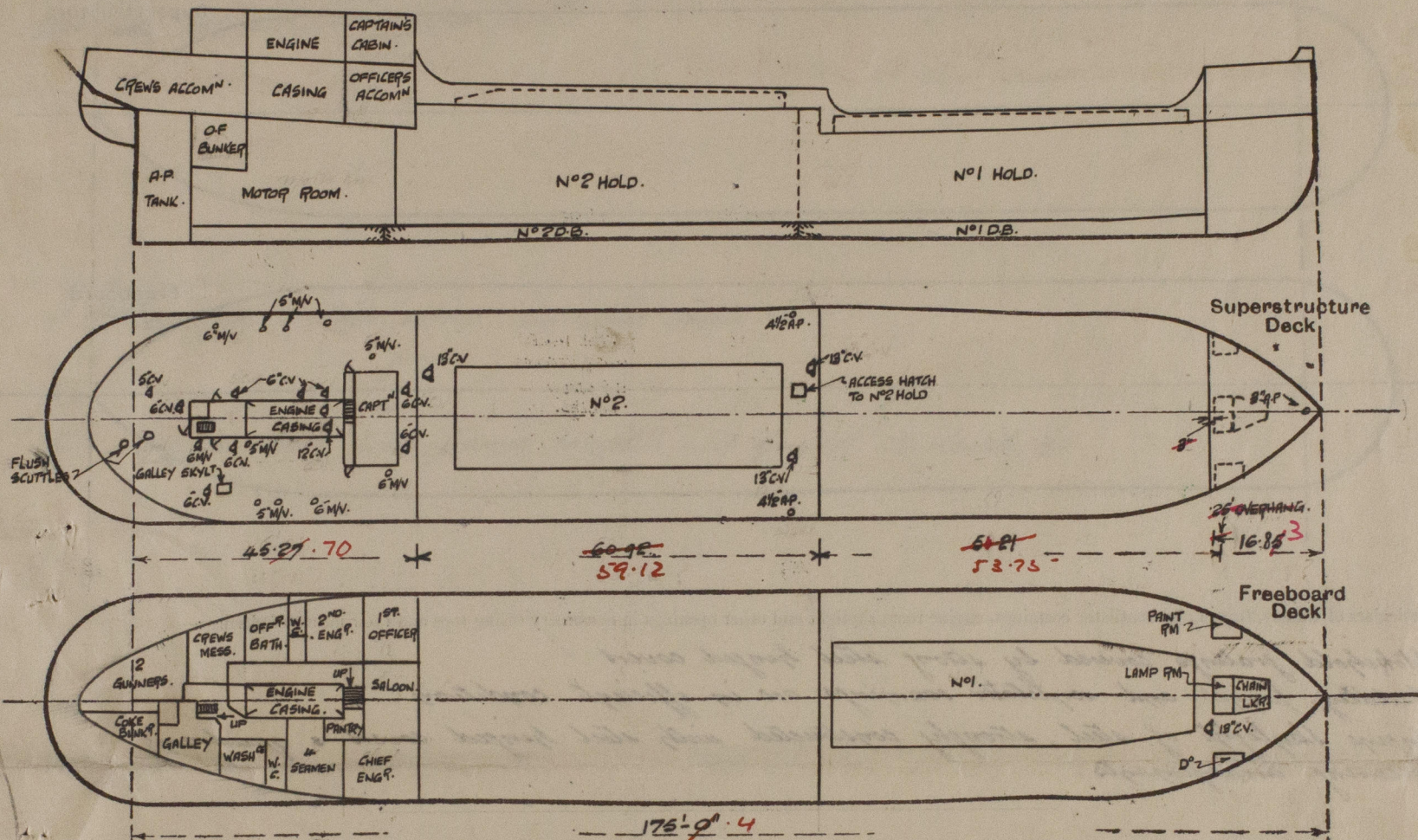
Lloyd's Register of Shipping.

SURVEYS FOR FREEBOARD.

(CONDITIONS OF ASSIGNMENT.)

Ship's Name M/V KILLUPIN.Port of Survey NEWCASTLE-ON-TYNEOfficial Number 180792.Surveyor's Signature Stephen P. CookeNationality and Port of Registry British NewcastleDate of Survey While Building

Disposition and dimensions of superstructures, trunks, deckhouses and machinery casings to be inserted in the diagrams and tabular statement:—



Particulars of Superstructures, Trunks, Casings, Deckhouses.

	Coaming	Plating	Stiffeners	Spacing	End Attachments of Stiffeners	Size of Openings	Height of Sills	Height of Casings
Poop Bulkhead ...	30	30	3, 3, 30	31"	NONE	NONE	✓	3'-6" ABOVE P.Q.D. 7'-0"
Raised Quarter Deck Bulkhead ...	30	30	PLATE DIAPHRAM 3, 3, 30 DOUBLE	10'-7 1/2" FROM 4.	NONE	NONE	✓	3'-6" ABOVE U.D.
Bridge, After Bulkhead ...	✓							
Bridge, Forward Bulkhead ...	✓							
Forecastle Bulkhead ...	OPEN.							
Trunk, Aft ...	✓							
Trunk, Forward ...	✓							
Exposed Machinery Casings on Freeboard or Raised Quarter Decks ...	✓							
Exposed Machinery Casings on Superstructure Decks ...	30	26	3, 2 1/2, 25	30	BKT AT HEAD	3' 0" 4'-6" x 2'-0"	18"	7'-0"
Machinery Casings within Superstructures not fitted with Class I Closing Appliances ...	✓							
Deckhouses on Flush Deck Ships ...	✓							

Particulars of Closing Appliances (state if capable of being manipulated from both sides).

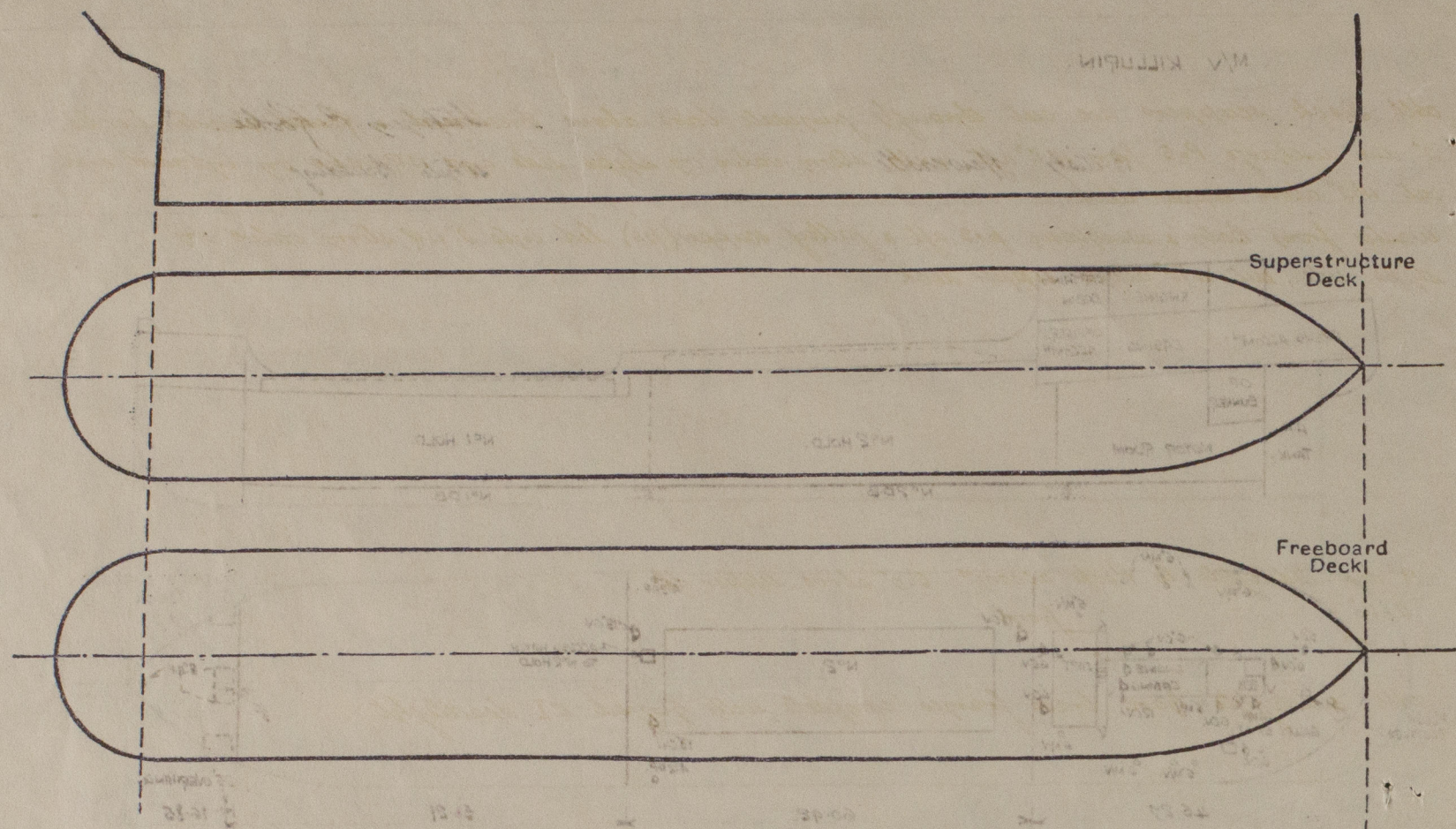
Poop Bulkhead ...	None. No openings	✓
Raised Quarter Deck Bulkhead ...	None. No openings	✓
Bridge, After Bulkhead ...	✓	
Bridge, Forward Bulkhead ...	✓	
Forecastle Bulkhead ...	Open.	
Exposed Machinery Casings on Freeboard or Raised Quarter Decks ...	✓	
Exposed Machinery Casings on Superstructure Decks ...	Hinged steel doors capable of being manipulated from both sides.	✓
Machinery Casings within Superstructures not fitted with Class I Closing Appliances ...	✓	
Deckhouses on Flush Deck Ships ...	✓	

4 Plans (Section) - Shell plan, Profile & Decks & General Arrangement
To be returned to this office

ENCLOSURE

PARTICULARS OF PROTECTION TO OPENINGS, ETC.

The following diagrams should be used to indicate the positions of cargo and coaling hatchways, gangway, cargo and coaling ports, ventilators, companionways, etc., which would affect the seaworthiness of the ship:—



Particulars of fiddley, funnel and ventilator coamings, engine room skylight and other openings in machinery casing tops and their means of closing :—

Stockhold gratings, covered by strong steel hinged covers
Fiddley, funnel and ventilator coverings are in efficient condition.
Exposure skylight of steel, strongly constructed with steel hinged covers & quadrant
securing arrangements.

Particulars of Flush Bunker Scuttles :—

Prop Idk :- 2 @ 12" dia C.I cover, with securing chain to galley coal & coke bunkers.

Particulars of Companionways :—

[illegible]

Particulars of Ventilators in exposed positions on freeboard and superstructure decks :—

Upper Dk. - 1 @ 18" dia to N°1 Hold, coaming 4'3" high x 36" thick. ✓
 P.2. Dk. - 1 @ " " " " 3'8" " "
 " 2 @ " " " " " " "
 Casings Top. - 2 @ 14" dia to Eng. Room " " 3'6" " ✓
 P.2. Dk. - 1 @ 6" " to Accom. " " 3'6" " " ✓

all ventilators provided with wood plugs & canvas covers.
 & These coverings are supported satisfactorily by brackets.

Particulars of Air Pipes in exposed positions on freeboard, raised quarter, or superstructure decks :—

Forecastle Stk.	1 @ 3" dia to fore peak. &	1'-6" from deck to mouth.
Upper Stk.	1 @ 4" - " No 1 DB. (pos)	3'-0" - " - " - "
P.Q. Stk.	1 @ 4 1/2" - " No 2 DB. (pos)	2'-0" - " - " - "
Prop Stk.	1 @ 3" - " O.F. Rudder (pos)	1'-6" - " - " - "
"	1 @ 3" - " aft peak. &	1'-0" - " - " - "

air pipes provided with wood plugs

Particulars of Gangway Cargo and Coaling Ports:—

None fitted

Particulars of Scuppers and Sanitary Discharge Pipes :—

• All Deck scuppers are cut through gunwale bars above Foreboard & Raised Quarter Decks.
2" dia discharge p.o.s from w.c.'s aft, with storm valve on ships side and N.Y. valve on inboard end
out 11"6" above upper deck.
Wastes from Bath & washbasin p.o.s aft & galley scupper (p.o.) led into 2" N.Y. storm valve on
ships side, out 11"6" above upper deck.

Particulars of Side Scuttles :—

9" dia saddlepts to Poop accomⁿ. 5'-0" above supper dle.
2-16" - " front. Chain 12'6" down 12'6"
1-12" - " " " " " " " " " " " "

All sidelights have brass frames complete with hinged C.I. deadlight.

Vertical distance of Sill of lowest Side Scuttle above top of keel

17-0

Particulars of Guard Rails :—

Particulars of Guard Rails :—

Steel bulwarks on Foreboard Dk in forward well	3'9" high, efficiently constructed & supported
" " " Raised Quarter Dk.	3'3" " " " "
" " " Poop Dk.	3'9" " " " "

guard rails on Forecastle Dk, Poop Dk & P.R. Dk front at break of upper dk.
3'-3" high - 2 rails with stanchions spaced approx 5'-3" apart.

Particulars of Gangways, Lifelines, etc. :—

Particulars of Freeing Arrangements.						
	Length of Bulwark	Height of Bulwark	Size of Freeing Ports	Number each side	Area each side	Rule area each side
After Well (R.R. dk.)	59.12 60.92	3'3"	8' 11 1/2" x 6"	3	13.5 ✓	12.41
Forward Well upper dk.	53.75 54.21	3'9"	8' 11 1/2" x 6"	3	13.5 ✓	11.87

State position of each freeing port	After Well:—	<i>From Poop front.</i>	<i>10'-9", 28'-8", 46'-7".</i>
(F. and A. position and height above deck edge)			Forward Well:—	<i>From R. Q. dk front.</i>	<i>5'-5 1/2", 21'-7", 37'-9".</i>

State whether the freeing ports are fitted with shutters, bars, or rails, and give particulars of such:— *Open Slots 10" above deck*

Additional area where sheer is less than standard.

PARTICULARS OF PROTECTION TO OPENINGS, ETC.

HATCHWAYS ON FREEBOARD AND SUPERSTRUCTURE DECKS.									
Description of Hatchway		No 1 FORWARD. MAIN DECK.		No 2. RAISED QUARTER DK.		TRIMMERS ESCAPE HATCH P.Q. DK.			
Dimensions of Hatchway		43'-0" x 16'-8" / 14'-2" AT TOP 48'-4 1/2" x 15'-6" / 12'-0" AT DECK		43'-0" x 16'-8" AT TOP. 48'-4 1/2" x 15'-6" AT DECK.		2'-0" x 2'-0"			
COAMINGS	Height above Deck	3'-4 1/2"		3'-3"		2'-4"			
	Thickness	{ .440		{ .440		5/16"			
	Sides	5 x 9 x 30 BA.		3 x 9 x 30		NONE			
	Ends	30 BKTS. 7'-2" APART.		30 BKTS. 7'-2" APART.		NONE			
HATCH BEAMS	Number	9		9					
	Spacing	4'-3 5/8"		4'-3 5/8"					
	Scantling and Sketch					NONE			
	Bearing Surface	3"		3"					
FORE AND AFTERS	Number								
	Spacing								
	Unsupported Lengths								
	Scantling* and Sketch	NONE		NONE		NONE			
HATCH COVERS	Material	WOOD		WOOD		STEEL HINGED			
	Thickness	2 1/2"		2 1/2"		COVER SECURED			
	How fitted	F.A.A.		F.A.A.		BY SCREW			
	Bearing Surface	3"		3"		TOGGLES.			
Spacing of Cleats		2'-4"		2'-4"		✓			
Number of Tarpaulins		2		2		✓			
<p>*Are wood fore and afters steel shod at all bearing surfaces? NONE</p> <p>Are battens and wedges efficient and in good condition? YES</p> <p>Are tarpaulins in good condition and in accordance with rule requirements? YES.</p> <p>Are lashings provided in accordance with rule requirements? YES.</p>									

Particulars of any special features:—

Small Hatches.

To Fore Peak Tank 17" x 13" hole cut in upper deck covered by 30" plate cover with 8 bolts & nuts
- aft -

Endorsement at first survey and at surveys for renewal of Certificate:—

The fittings and appliances are in accordance with the particulars shown on this form (or as now modified) and are in good condition.



© 2020

Lloyd's Register
Foundation