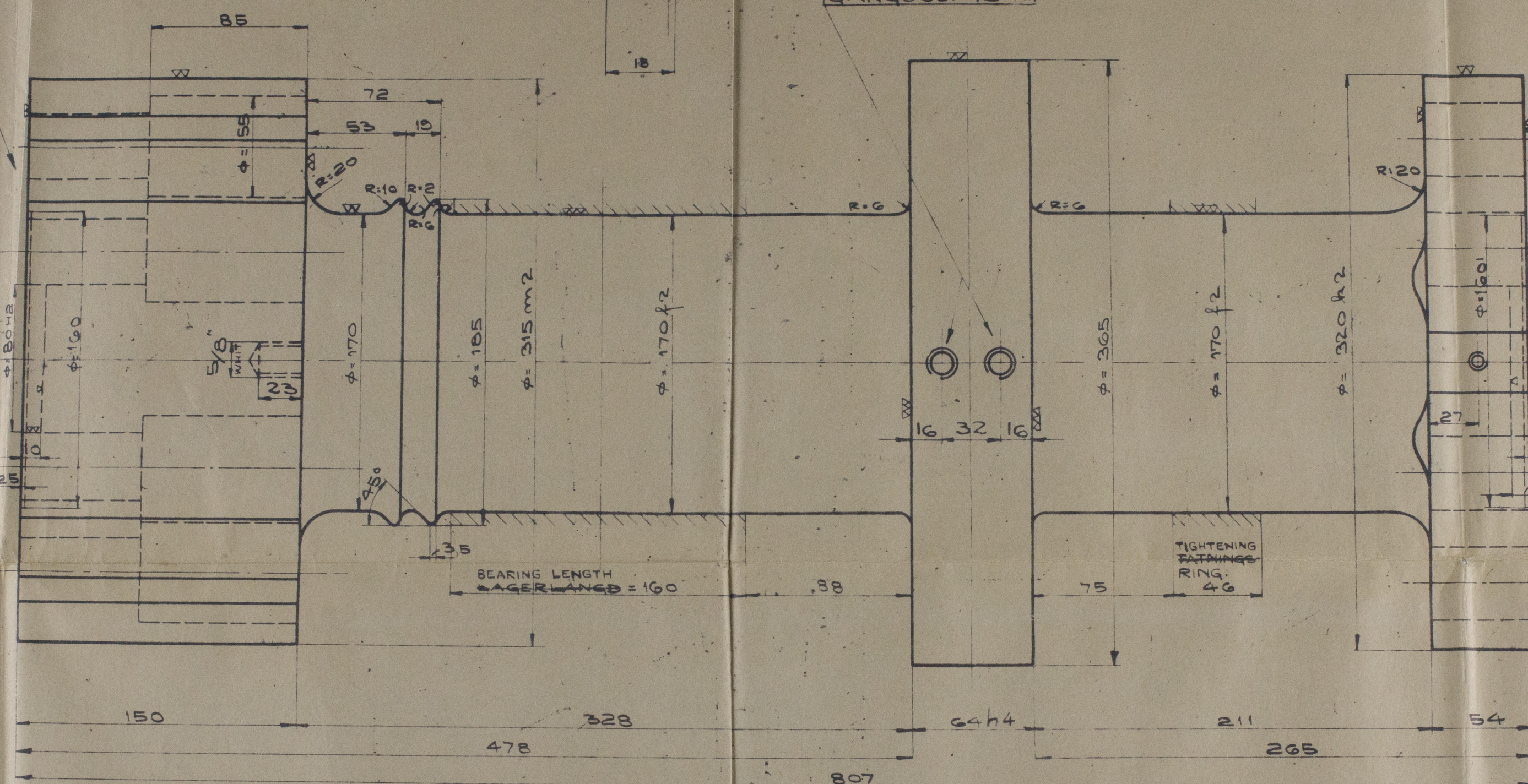


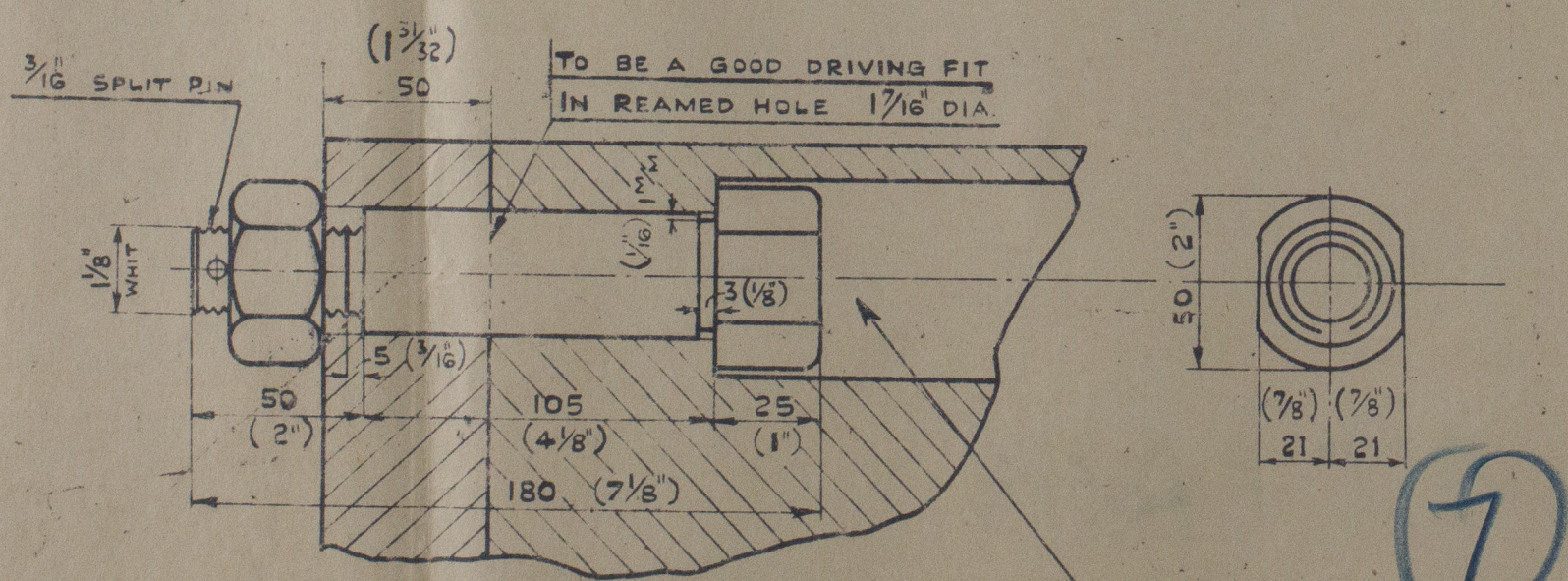
KEY
~~FILE~~ C 32x18x54
* SECURED WITH
~~SAKRA-8 MODELS~~
= 5 1/16" = 30

[illegible]

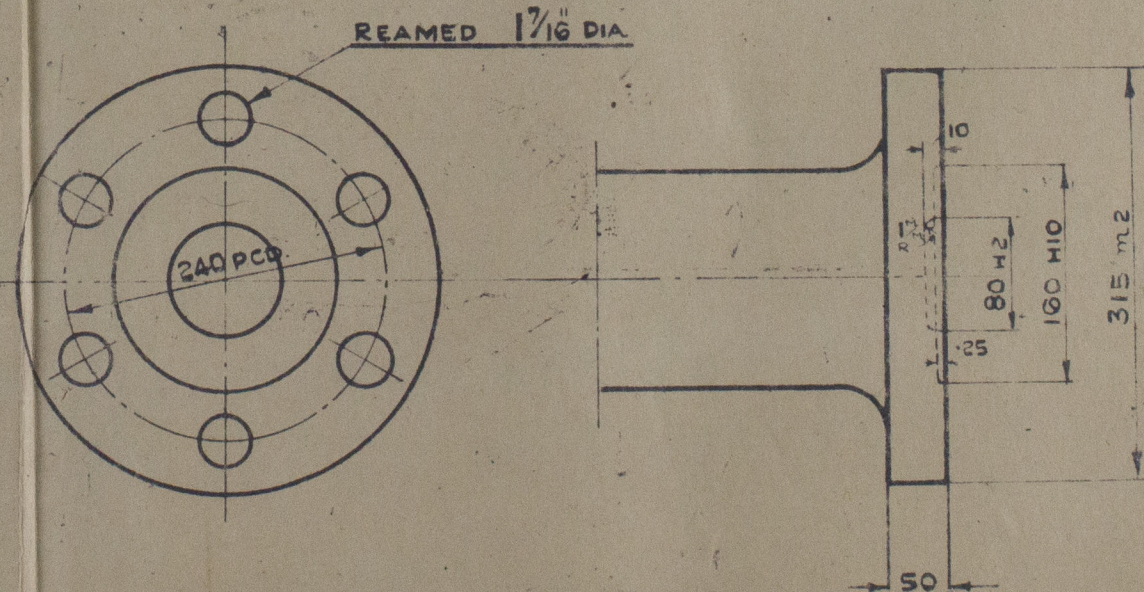
2 ST. 1/2" HÅL
THD. DEPTH
~~gangop~~ 18 m/m



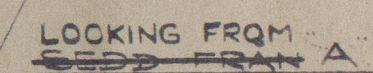
DRILLED
~~2" DIA~~ 6:30
REAMED TO
~~2" DIA~~ 4:12
TOGETHER WITH
THE CRANKSHAFT AND
CRANKPINS
EX RU. $1\frac{1}{2} \times 14$
BG KM. $1\frac{1}{2}$
SP. 8 x 65



ITEM 2



HOLES TO BE MARKED OFF BY SHIPBUILDERS FROM TEMPLATE
SUPPLIED BY BA LTD & REAMED $1\frac{3}{16}$ " DIA.



DRILLED
~~BORAS~~ ϕ : 35
REAMED TO
BROTCHAS 1 7/16"
TOGETHER WITH
~~FULL GAMMAN MED~~
INTERMEDIATE SHAFT.
~~MELANEX~~

See letter

LLOYD'S REGISTER OF SHIPPING

J. K. Beveridge J.D.

DATE 13/1/41



TEST
ULTIMATE TENSILE STRENGTH 28-32 TONS/D"
YIELD POINT NOT LESS THAN 16 TONS/D"
ELONGATION PLUS ULTIMATE TENSILE STRENGTH TO BE NOT LESS THAN 57.
COLD BEND TEST 180° DN 1/4" RADIUS.

*Clelands (Successors) Ltd
Wellington Quay-on-Tyne Yard No 77
British Polar Engines Ltd Eng. No E. 502*

M351-A723
THRUST SHAFT
CLASSENE
M451
SC 12
MA781
LONDON COPY

BAI. BEFORE ISSUE
PARTICULARS OF BOLT AND
INTERMEDIATE SHAFT ENDS
AND ITEM 2 ADDED. B.R.G.

W1027-0242

W1027-0242

"Killarney"

Rpt. No. 103458

THRUST SHAFT

QWC103458.

(6)

RETAIN



© 2020

Lloyd's Register
Foundation