

6-5-1919

1165

TENSILE STRENGTH OF MATERIALS.

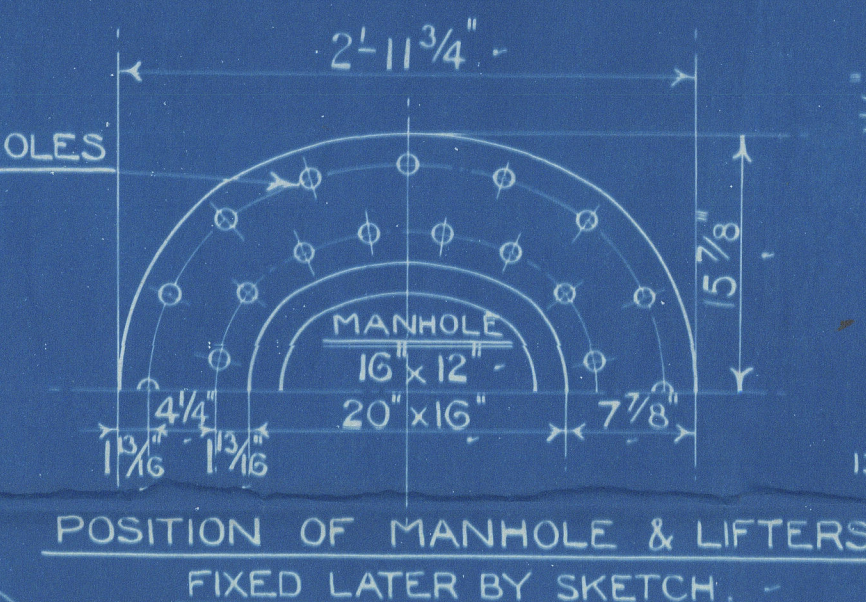
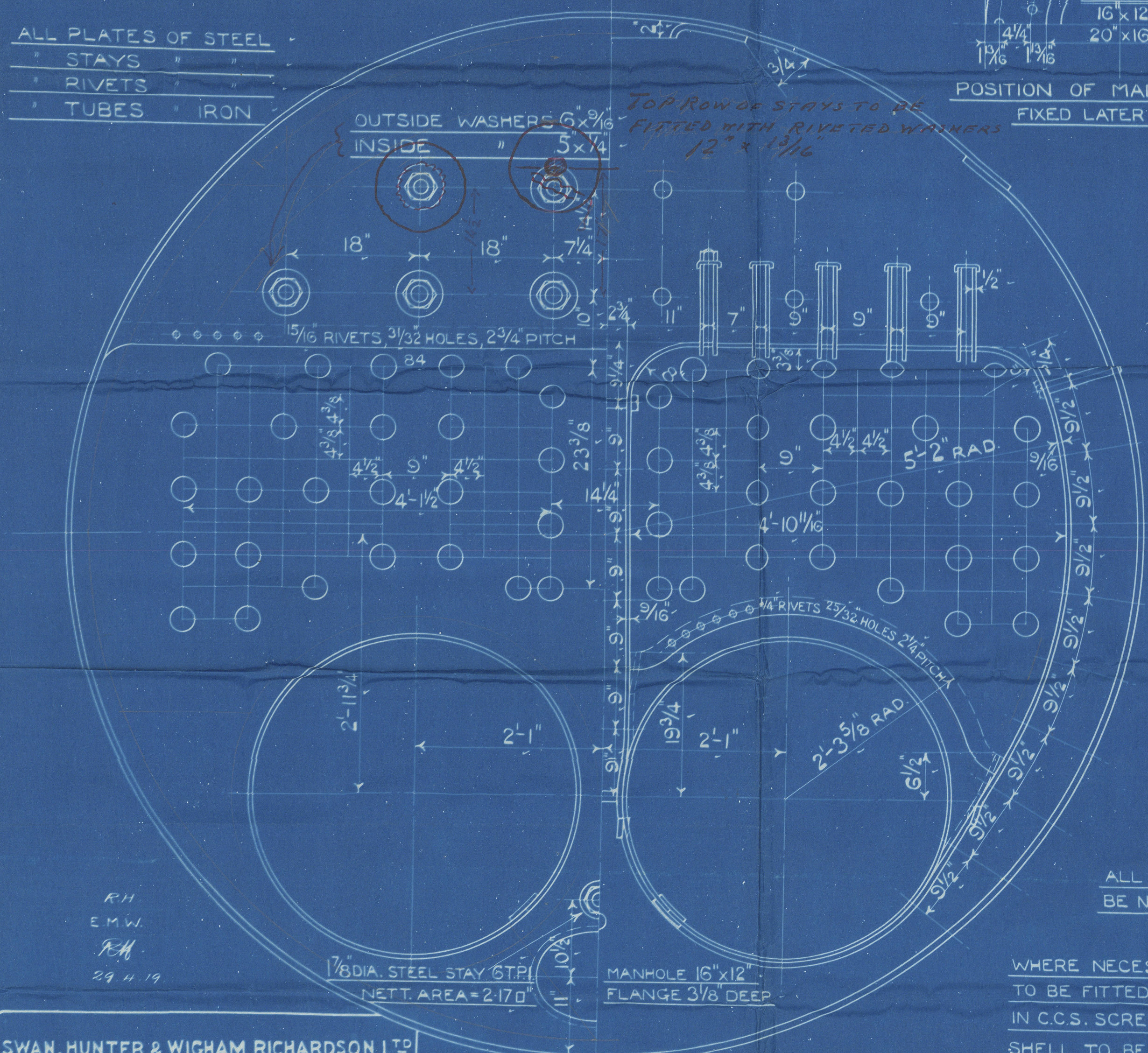
CIRC SHELL PLATES	=	29 3/4	TO	34	TONS / 0"
MANHOLE COMPENSATING PLATE	=	27	"	30	"
GIRDER PLATES	=	28	"	32	"
ALL OTHER PLATES	=	26	"	30	"
LONGITUDINAL STEEL STAYS	=	28	"	32	"
SCREWED STAY BARS	=	26	"	30	"
RIVET BARS	=	26	"	30	"

WORKING PRESSURE = 110 LBS / 0"
TEST " = 220 " "

TOTAL HEATING SURFACE = 1165 SQ. FT.
" GRATE " = 34 " "
FIREBARS 4'-9" LONG.

SURVEYS :- LLOYDS & BUREAU VERITAS.

ALL PLATES OF STEEL
STAYS
RIVETS
TUBES IRON



CIRC. JOINT 1/16 HOLES, 2 5/8 PITCH

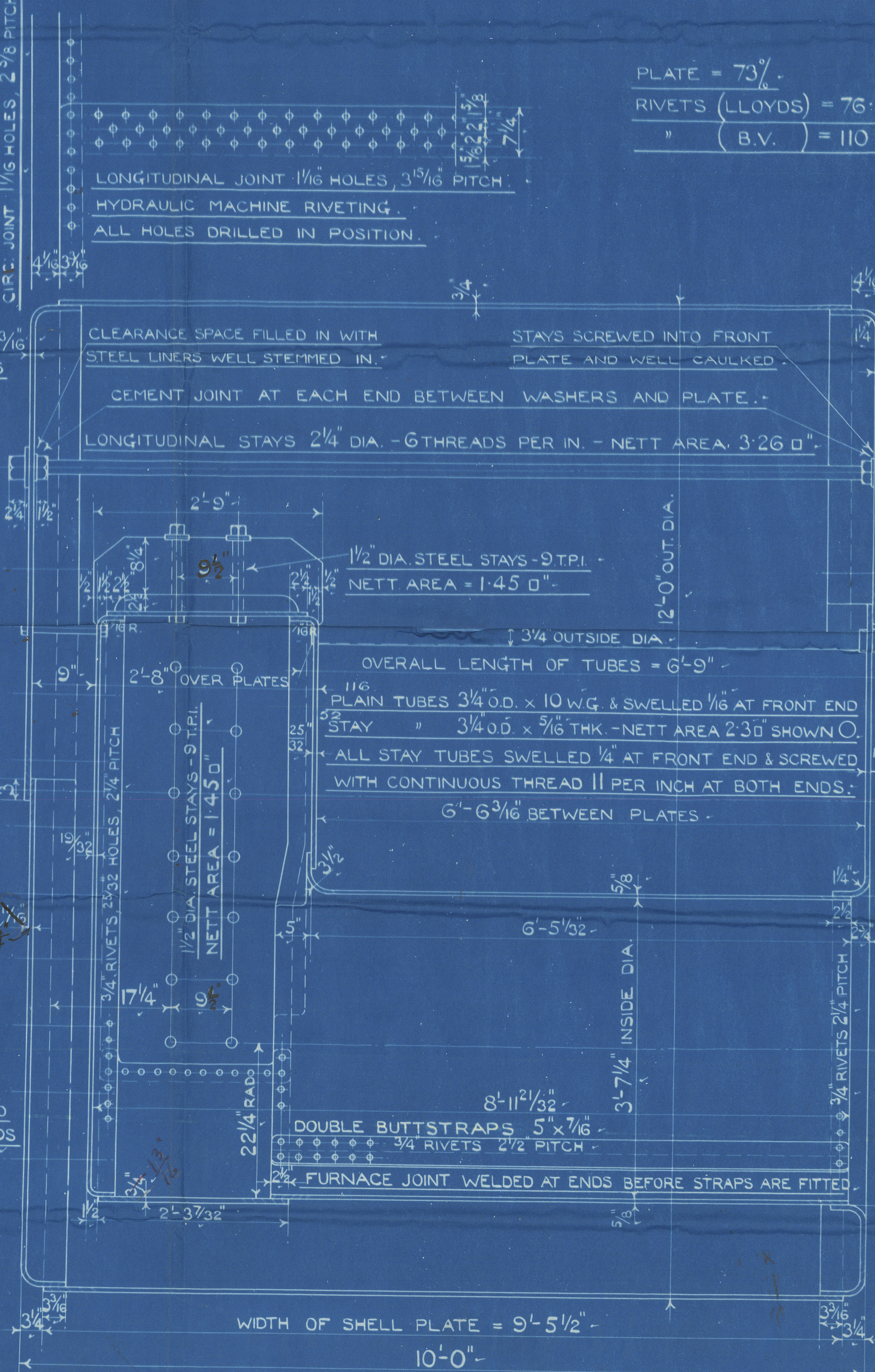
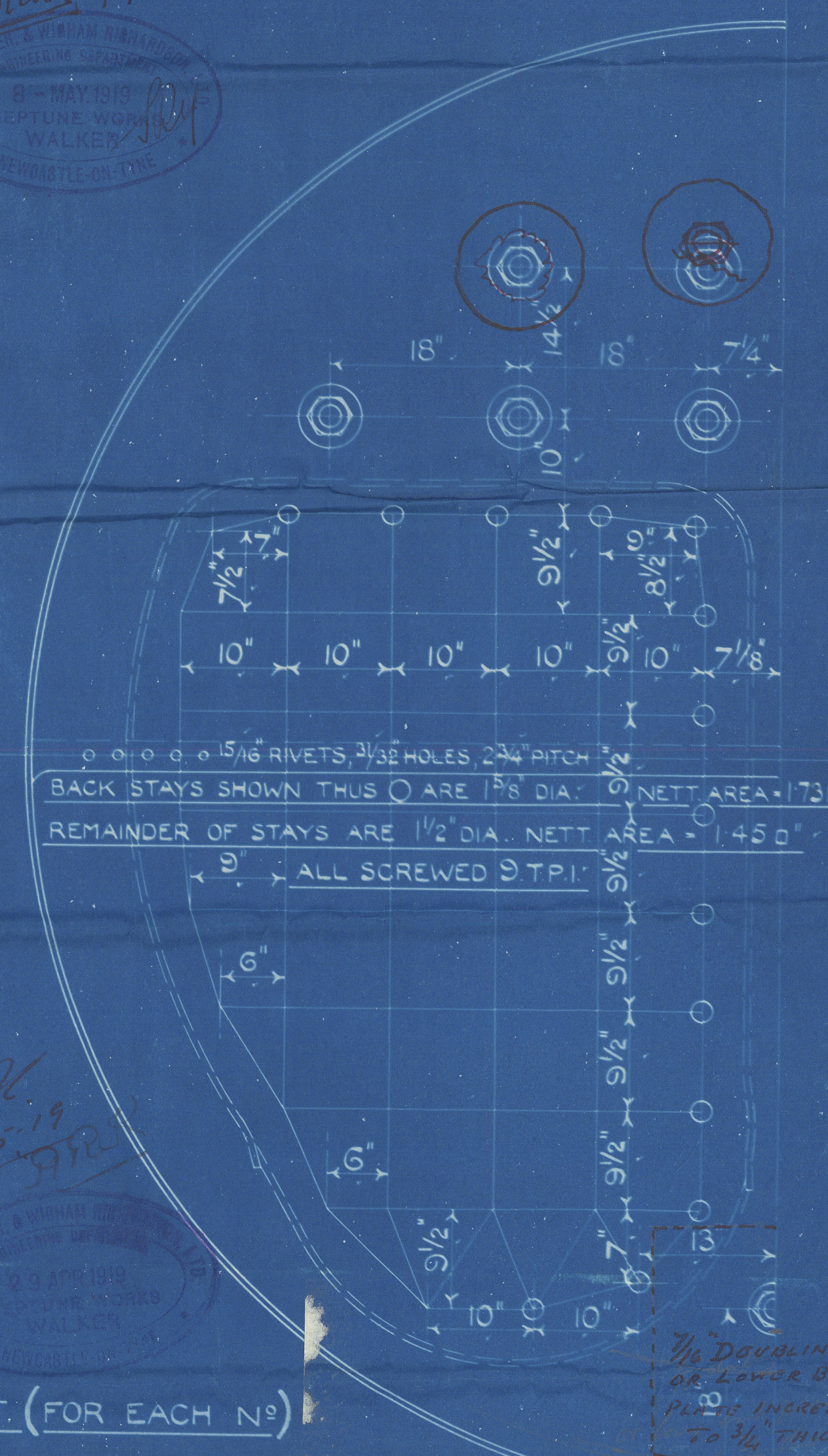


PLATE = 73%
RIVETS (LLOYDS) = 76.5%
" (B.V.) = 110 LBS.

Approved
Noted: 8/9/19
SWAN, HUNTER & WIGHAM RICHARDSON
ENGINE DEPT.
NEPTUNE WORKS, WALKER-ON-TYNE
WALKER
NEWCASTLE-ON-TYNE



ONE OFF. (FOR EACH N°)
DONKEY BOILER 9/76 (FOR N° 1121 SHIP)
9/77 " " 1123 " "

SCALE: 1" = 1 FOOT.

SWAN, HUNTER & WIGHAM RICHARDSON LTD
ENGINE DEPT.
NEPTUNE WORKS, WALKER-ON-TYNE
TRACING N° 8966 DATE 29.4.19

1/8 DOUBLING
OR LOWER BACK
PLATE INCREASED
TO 3/4 THICK.

For enclosure to

Date.....

8/5/19

Lloyds Register

From

Please return to SWAN, HUNTER, & WIGHAM RICHARDSON, LTD.,
Neptune Works, WALKER.

W1025.0221 1/2

6-5-1919.

1165.

TOTAL HEATING SURFACE = ~~1185~~ SQ. FT.

" GRATE " = 34 " "

FIREBARS 4'-9" LONG.

$$\begin{aligned} 5) &= 76.5\% \\) &= 110 \text{ LBS.} \end{aligned}$$

SURVEYS :- LLOYDS & BUREAU VERITAS



© 2020

Lloyd's Register
Foundation

Seventeenth Regiment

Dorsey Norton

Nº 1121 + 1123 Sp

S.S. "PASHA"

NEWCASTLE-ON-TYNE

REPORT NO. 72213

PLAIN



© 2020

Lloyd's Register
W1025 - 0221
Foundation