

4 BOILERS ONLY FITTED WITH SUPERHEATERS

SCHMIDT'S SUPERHEATERS TO BE FITTED

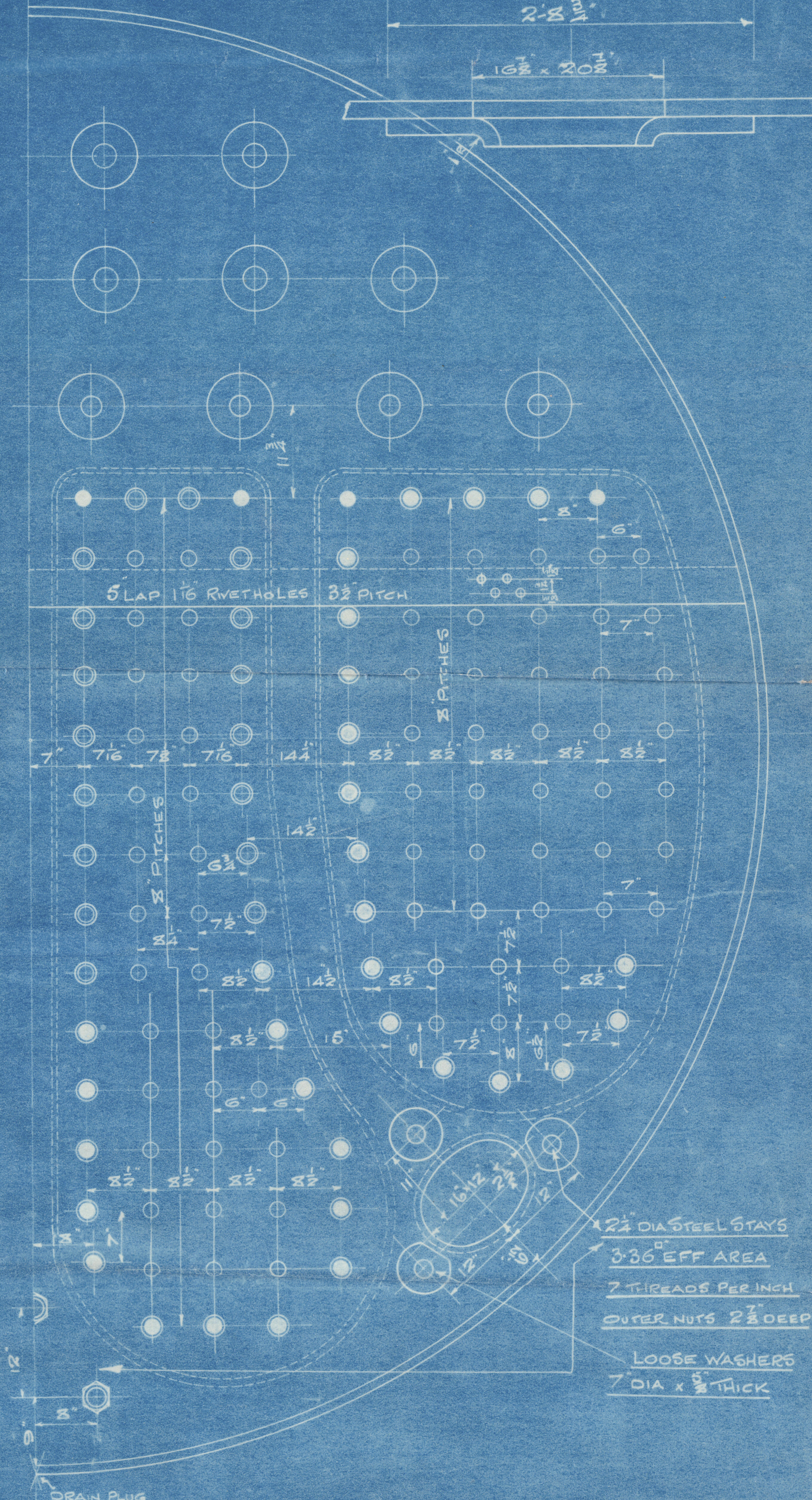
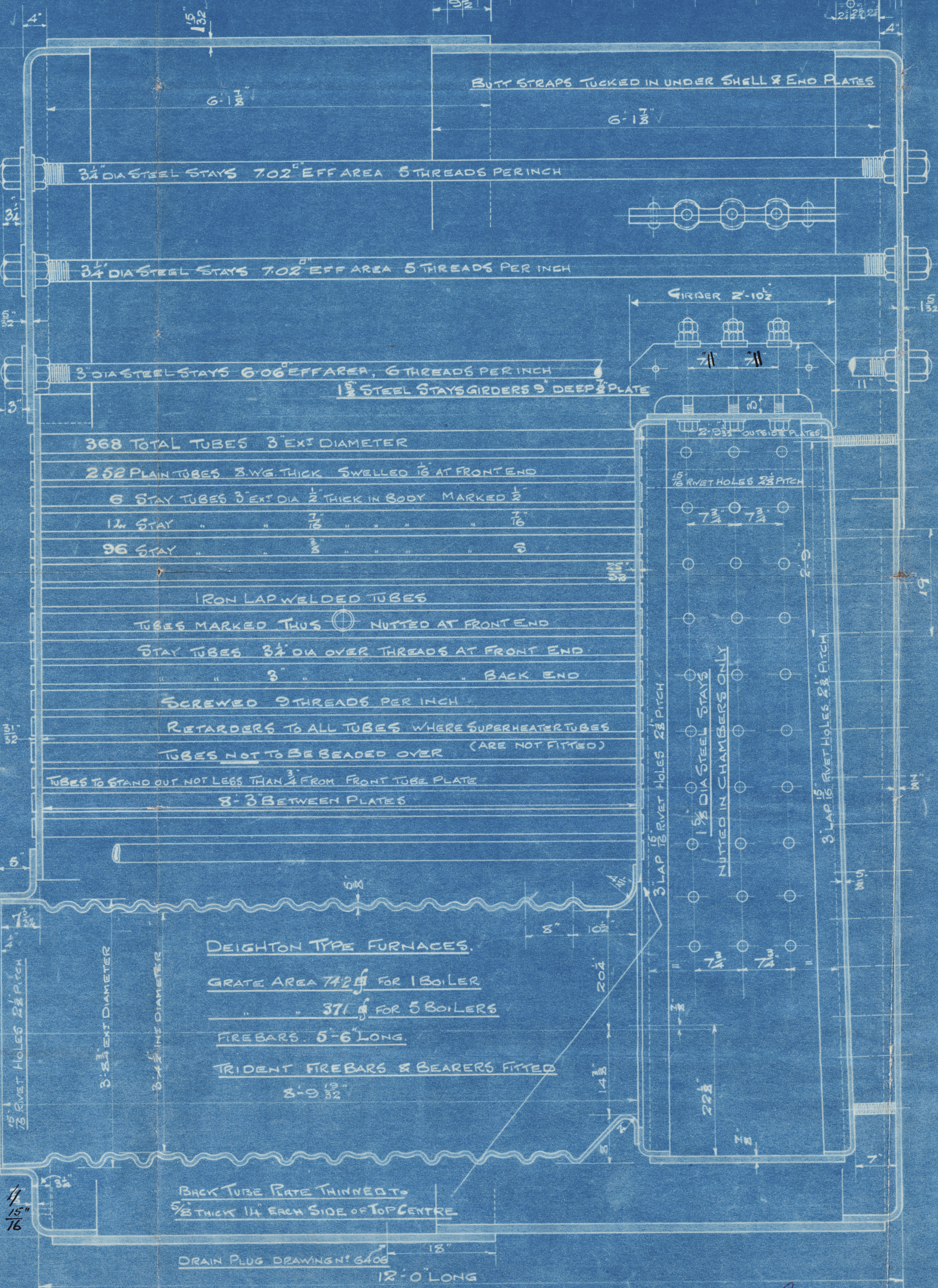
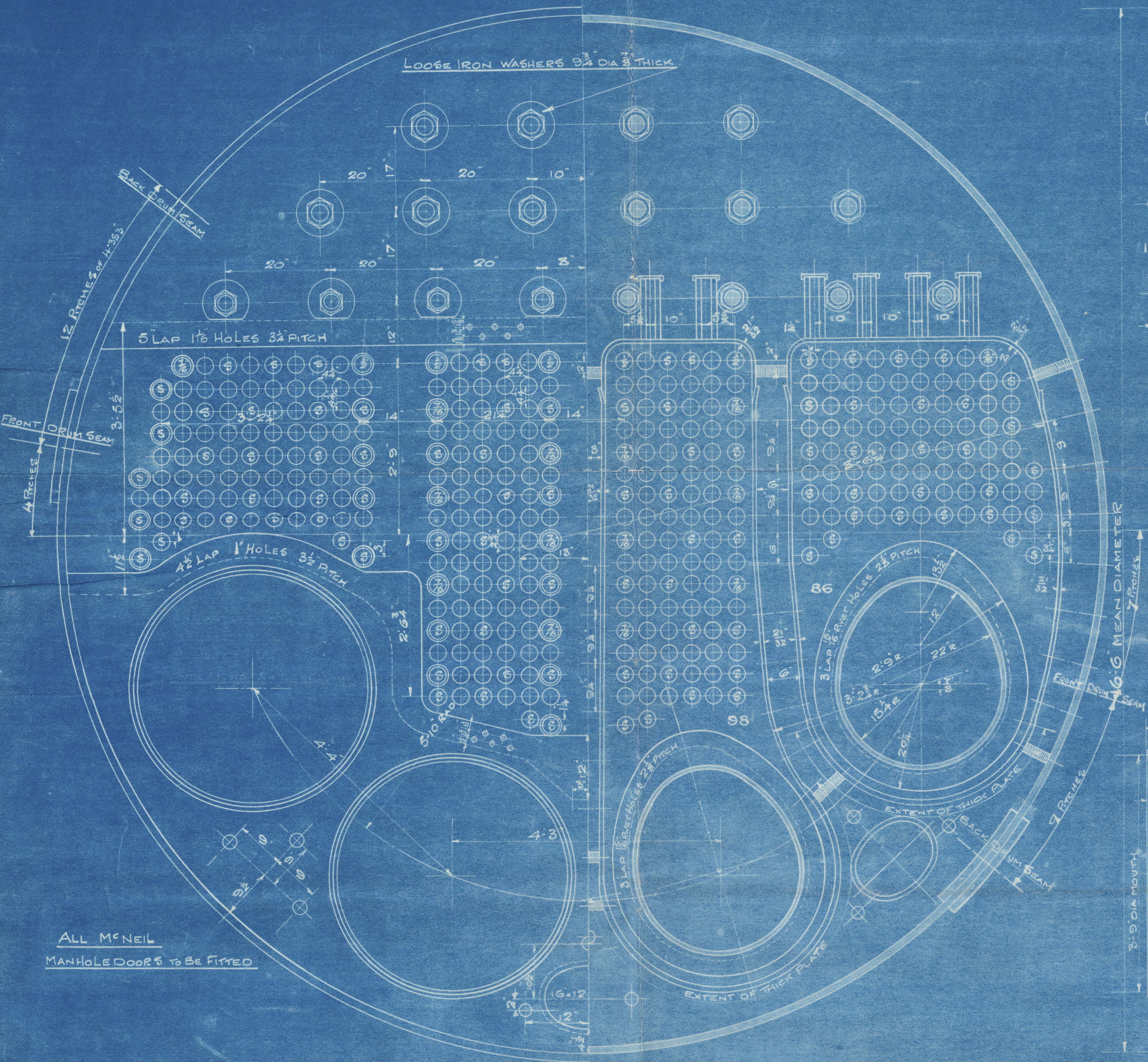
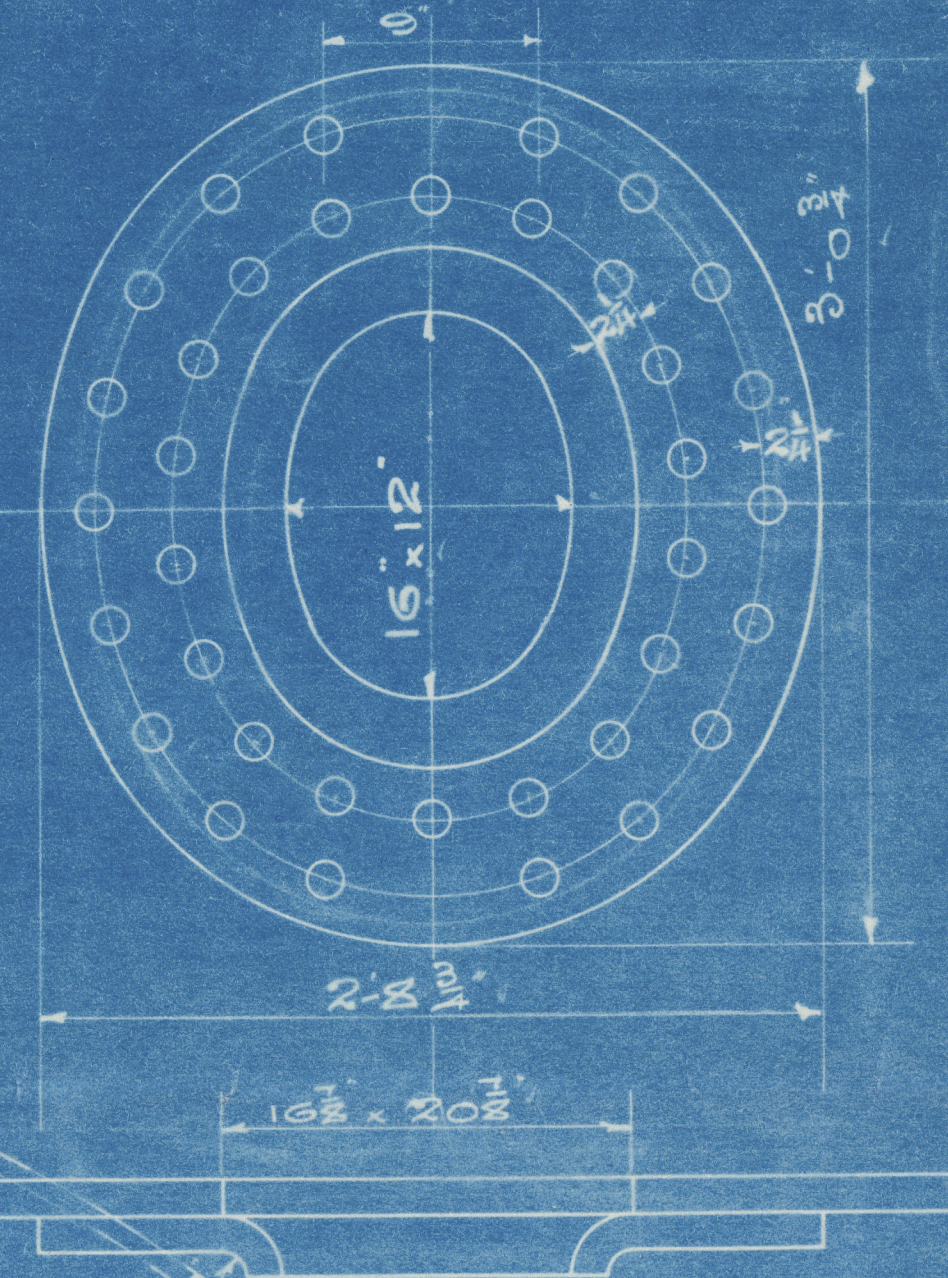
HEATING SURFACE	
FURNACES	210
CHAMBERS	347
FRONT TUBE PLATE	45
TUBES	2385
TOTAL FOR 1 BOILER	2987
TOTAL FOR 5 BOILERS	14935

LONGITUDINAL SEAMS $1\frac{1}{2}$ " RIVET HOLES $1\frac{1}{2}$ " RIVETS $10\frac{1}{2}$ " PITCH
CIRCULAR SEAMS $1\frac{1}{2}$ " RIVET HOLES $1\frac{1}{2}$ " RIVETS
END SEAMS $3\frac{1}{2}$ " PITCH CENTRE SEAM $4\frac{1}{2}$ " PITCH
INNER BUTTS $1\frac{1}{2}$ " THICK
OUTER BUTTS $1\frac{1}{2}$ " THICK

THE WHOLE OF THE WORK TO BE
CAULKED INSIDE & OUTSIDE
THREE ELECTROGENS TO EACH BOILER
STUDS FITTED FOR ZINC PLATES

MANHOLE DOUBLER
 $1\frac{1}{2}$ " PLATE $1\frac{1}{2}$ " RIVET HOLES
SCALE $1\frac{1}{2}$ " = 1 FOOT

MCNEIL DOOR FITTED
& FLANGED RING



TO PASS LLOYD'S & BOARD OF TRADE REQUIREMENTS FOR A WORKING PRESSURE OF 130 LBS PER SQ INCH

TENSILE STRENGTH OF SHELLS BUTTS & MANHOLE RING	29 TO 33 TONS
" " " FLANGED PLATES	26 TO 30 TONS
" " " FURNACES	26 TO 28 TONS
" " " GIRDER PLATES	28 TO 30 TONS
" " " LONGITUDINAL STAYS	28 TO 32 TONS
" " " SCREW STAYS	27 TO 30 TONS
" " " RIVET BARS	26 TO 30 TONS

B/T & LLOYD'S SURVEYS
5 BOILERS

BOILERS NO M 2213

MESSRS SIR RAYLTON DIXON'S 5/5 NO 588



Emd
2.5.14
GPR

SCALE 1 INCH = 1 FOOT



W020-0181

Amended Plan

Richardsons, Westgarth & Co. Ltd.

Main Boilers

N. M. 2213

for

Sir R. Dixon & Co. Ltd.

SS N. 588

W1020-0181

RETAIN

W. P. 1806



Harbada

No. 5491

LLOYD'S T&T

360 lbs.

30. 4. 15 J.K.



© 2020
Lectrim
Mab. Rpt. 199207
Foundation