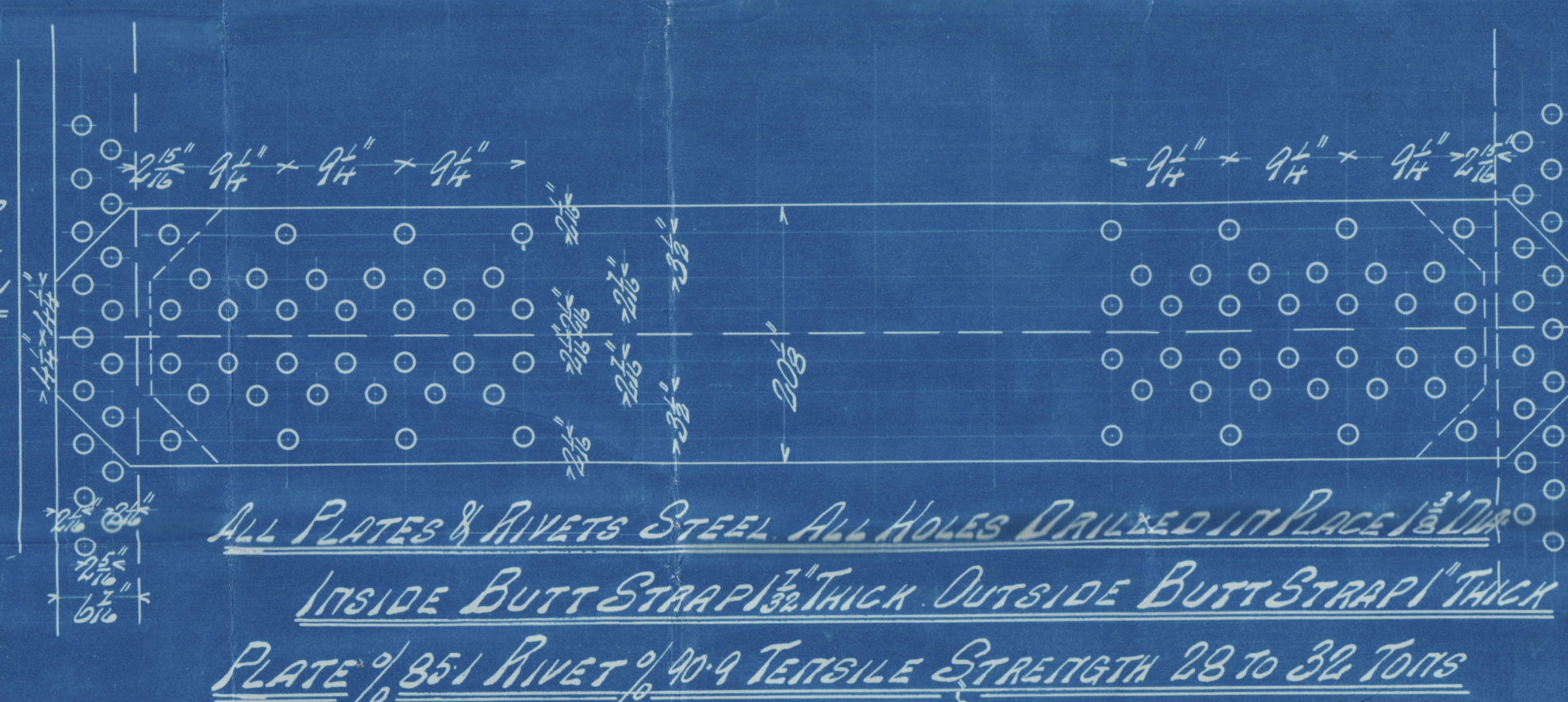


14.8.06

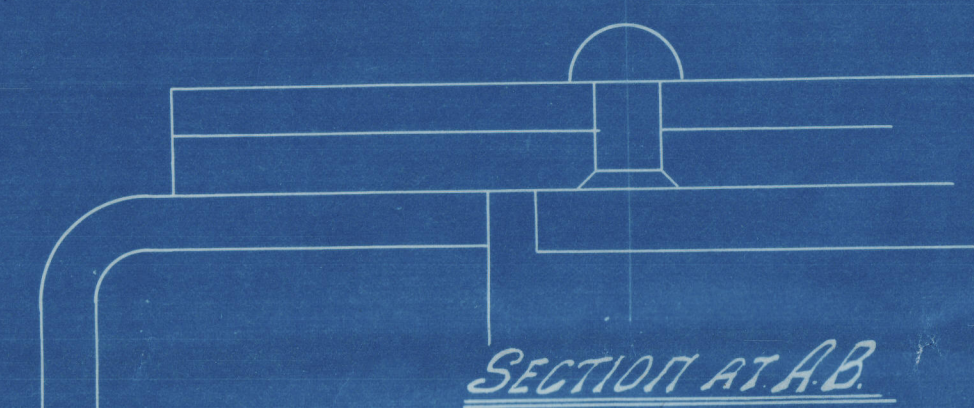
THICKNESSES		
SHELL	1/2"	STEEL
INNER BUTT STRAP	1/2"	
OUTER	1/2"	
TOP FRONT & BACK	1/2"	
BOTTOM FRONT	1/2"	
BOTTOM BACK	1/2"	
FRONT TUBE PLATE	1"	
BACK	1/2"	
CONC. BRIMS	3/16"	
TOPS & SIDES	3/16"	
BOTTOMS	3/16"	
BLDGERS	3/16"	
MATHOLE DOUBLING	1/2"	

CIRCUM JOINT LAP JOINT D.R.
RIVETS 17 CIRCUM 1 1/4" PITCH
RIVETS 1 1/2" DIA. HOLES 1 3/4" DIA.
RIVET 1/4" 452 PLATE 1/4" 676

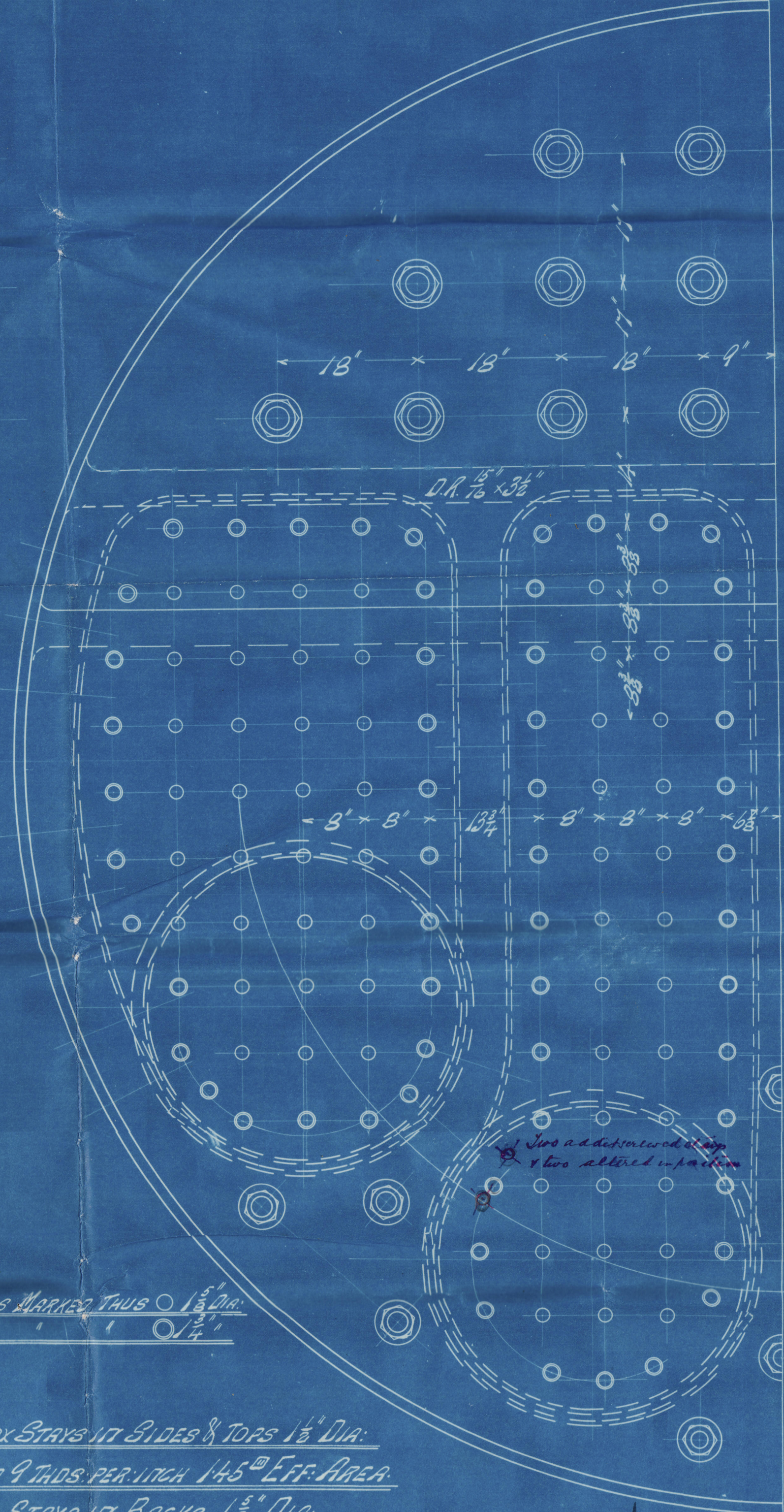
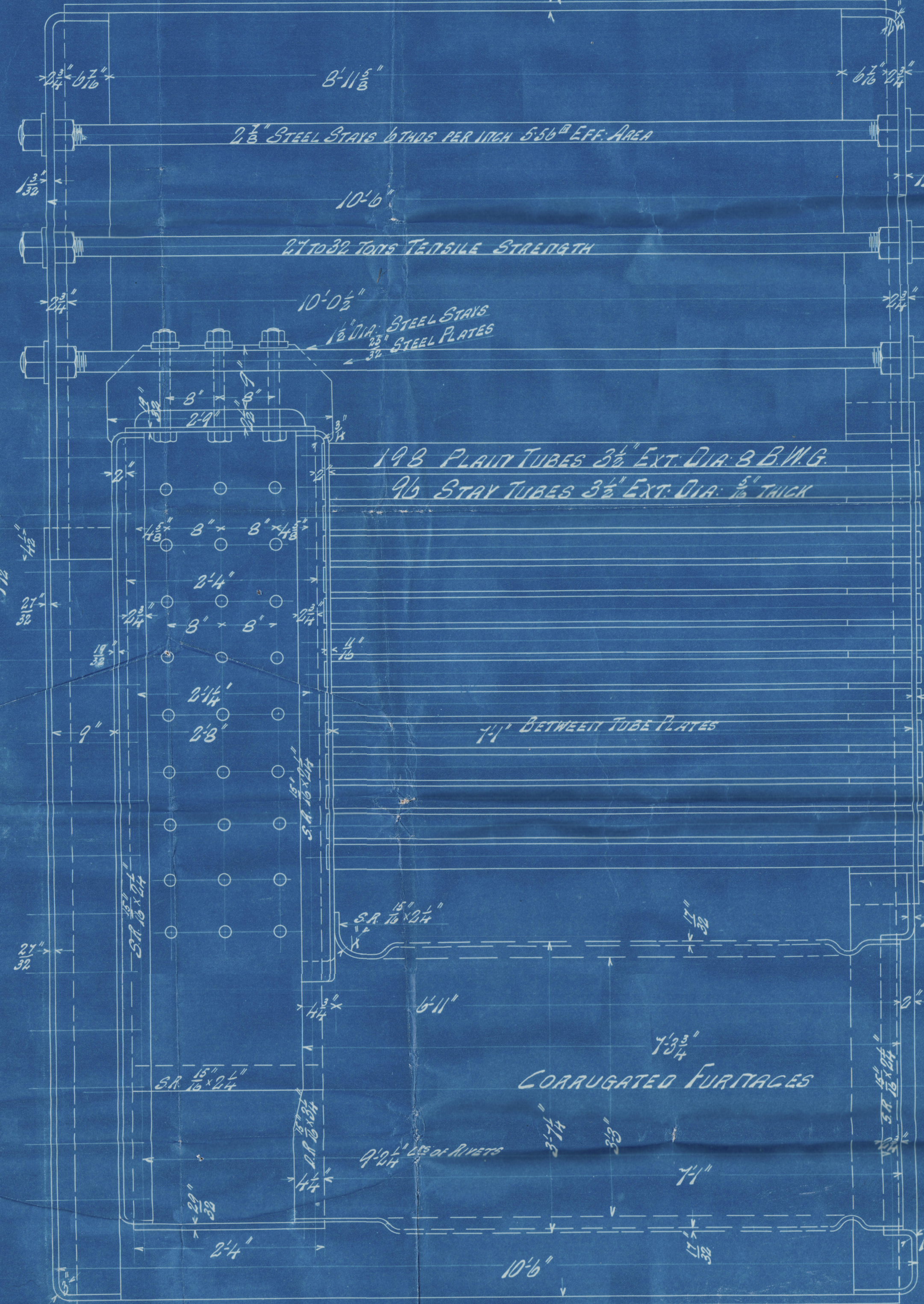
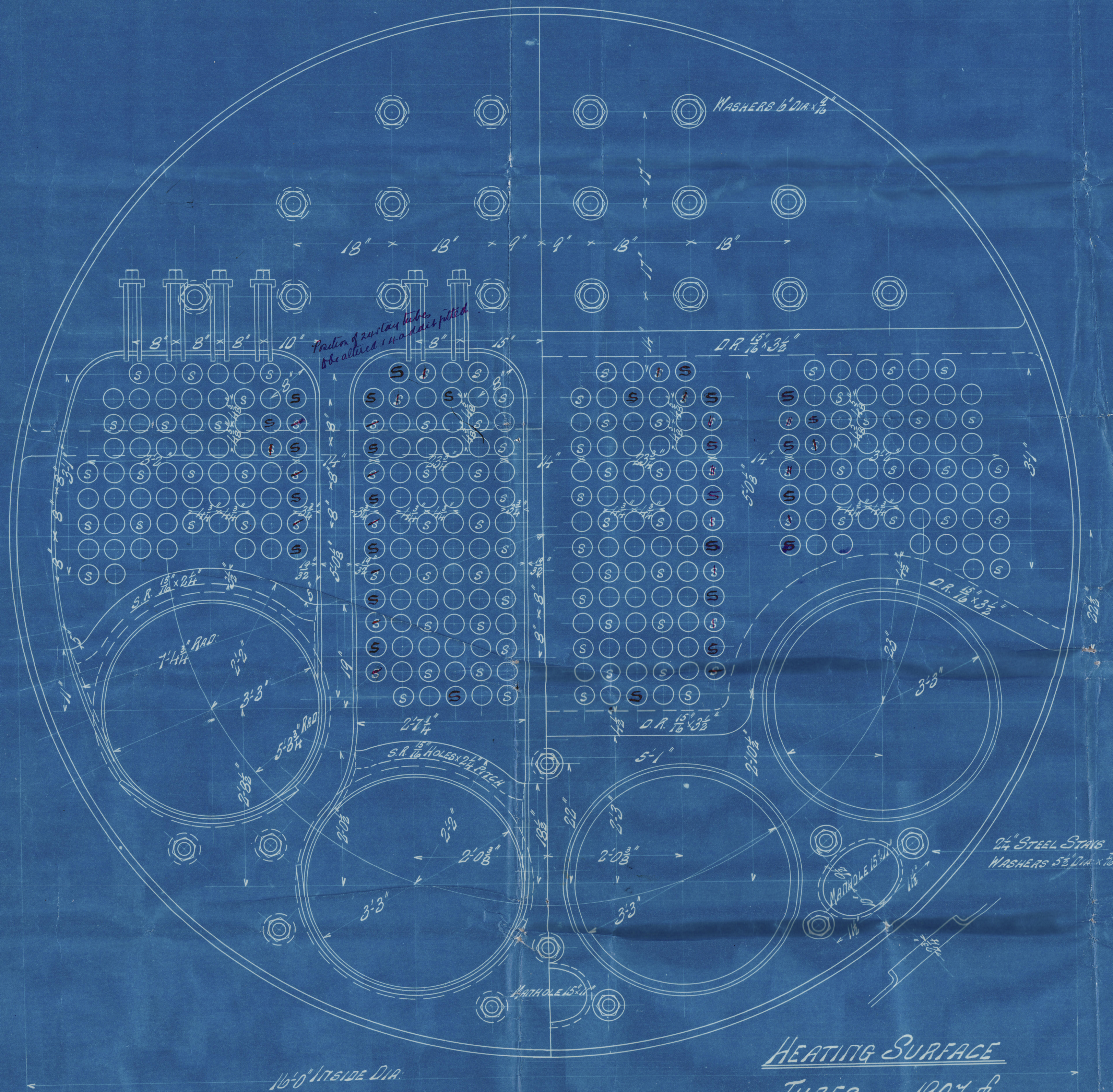
MATHOLE ON SHELL 16" x 12"
RING 2 1/4" x 2 1/4" x 1 1/2" WIRELESS DOOR



ALL PLATES & RIVETS STEEL ALL HOLES DRILLED IN PLACE 1 1/4" DIA.
INSIDE BUTT STRAP 1 1/2" THICK OUTSIDE BUTT STRAP 1" THICK
PLATE 1/4" 651 RIVET 1/4" 409 TENSILE STRENGTH 28 TO 32 TONS



SECTION AT A-B



HEATING SURFACE
TUBES 1901 #
FIREBOXES 310
FURNACES 168
GRATE AREA 14 1/2 (5'6\"/>

BOILER No 562
16'0\"/>

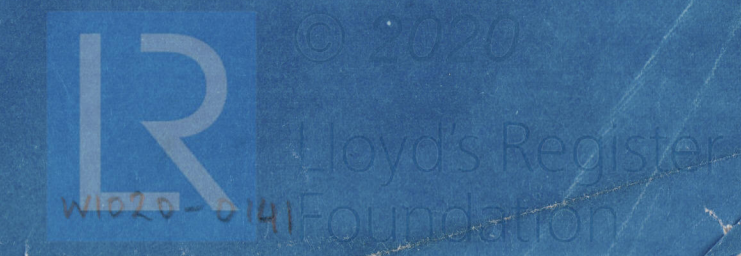


WORKING PRESSURE
180 LB PER SQ IN.

FIREBOX STAYS 17 SIDES & TOPS 1 1/2\"/>

14/8/06

14.8.06



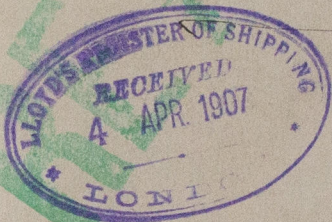
Hutson & Lons
Boiler No 562
for Mackay Bros
No 6.

5/5 Allan now Kiel
Ges. n. h. No. 25047



Inc
n

allan



W1020 - 0141



© 2020

Lloyd's Register
Foundation