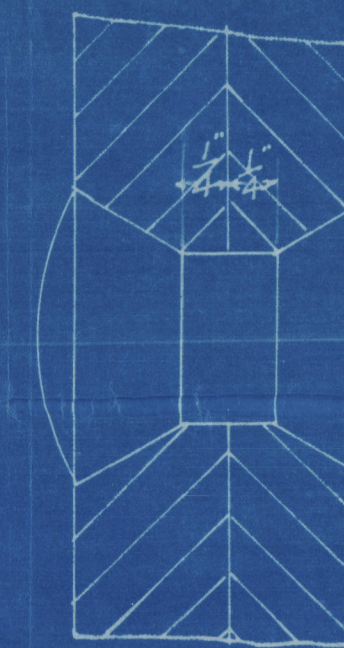
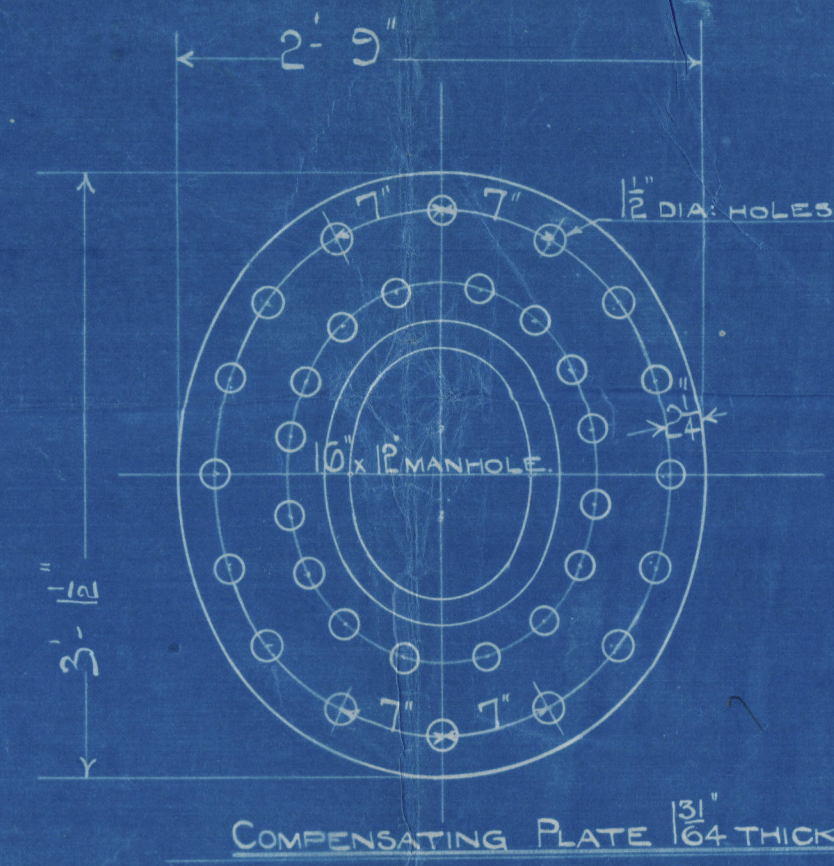
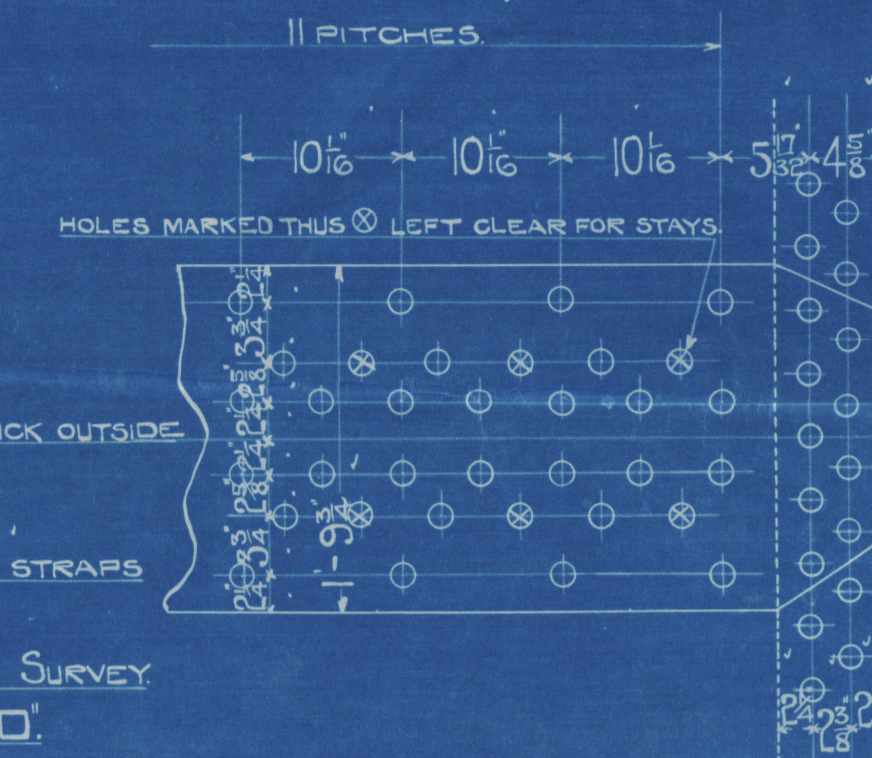


PARTICULARS 1 BOILER		6 BOILERS
HEATING SURFACE TUBES	1810	φ
FURNACES	144	φ
BK. COMB. CH.	08	φ
BK. TU. PLATES	47	φ
SIDES	142	φ
TOTAL	2217	φ
GRATE AREA = 3' 3" x 5' 6" BAR = 53' 625	φ	321' 75
RATIO H.S. = 41:3		
TUBE AREA = 8' 2	φ	49' 2
STEAM SPACE CUB. FT. 350		2100

TESTS OF MATERIAL	
SHELL PLATES	29 TO 33 TONS
BUTT STRAPS	29
COMPENSATING PLATE	27 TO 30 TONS
ALL COMB. CH. PLATES	26 TO 30 TONS
FLANGING PLATES	26 TO 30 TONS
MANHOLE DOORS	28 TO 32 TONS
GIRDER BARS	28 TO 32 TONS
LONGIT. STAYS	28 TO 32 TONS
C. C. STAYS	27 TO 30 TONS

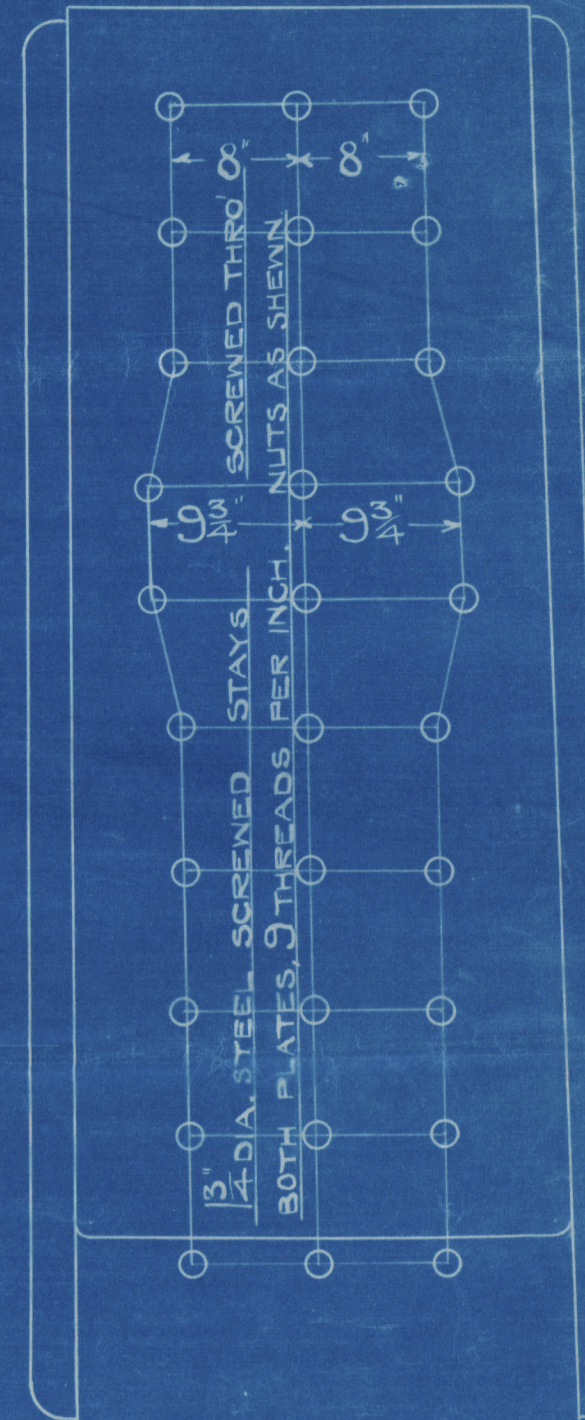


2/1/13  
ALL RIVETING IN WAY OF COMB. CHAM.  
TO BE MADE THUS  
FULL SIZE  
(FOR 11" 512 ONLY)

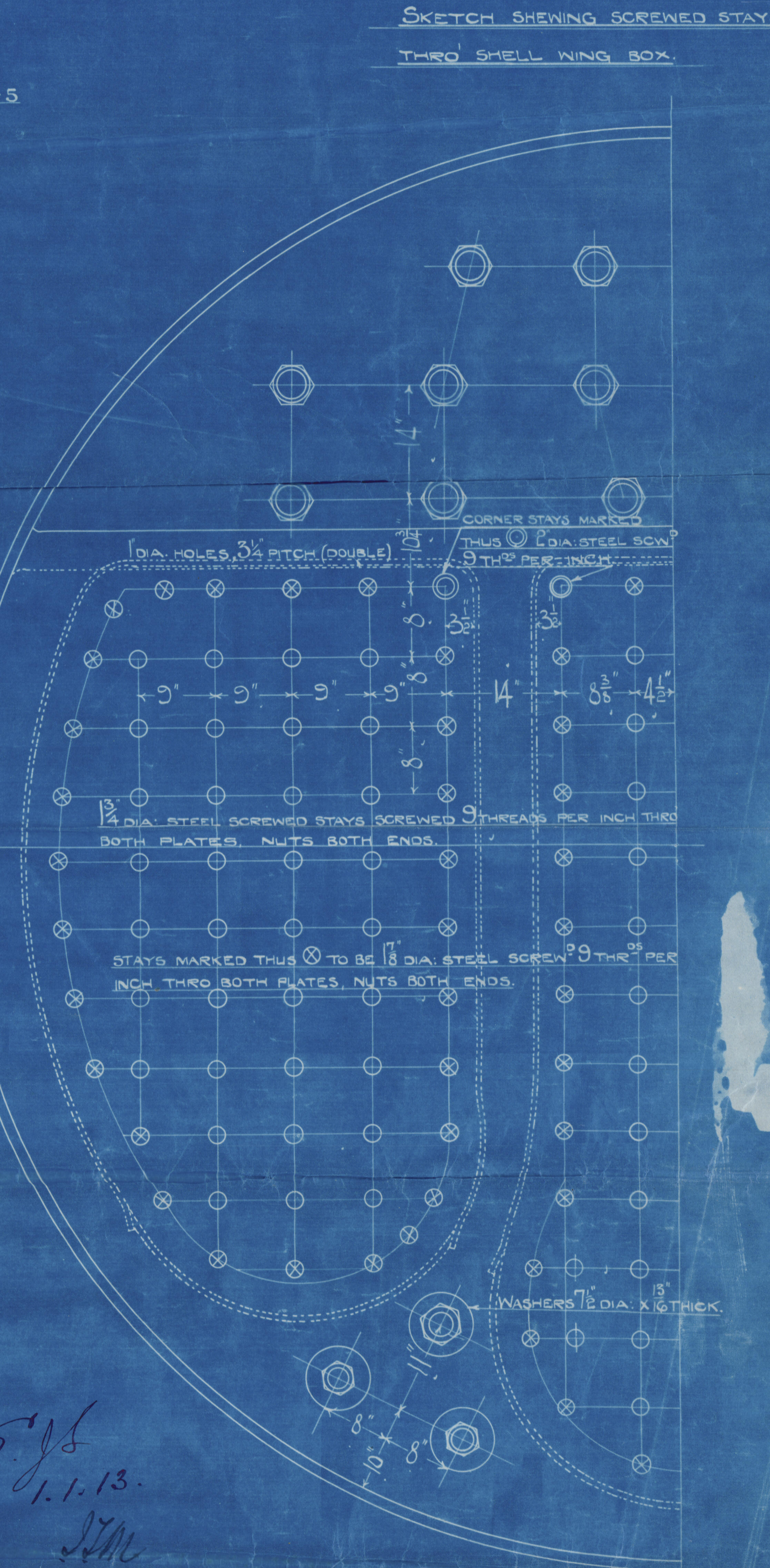
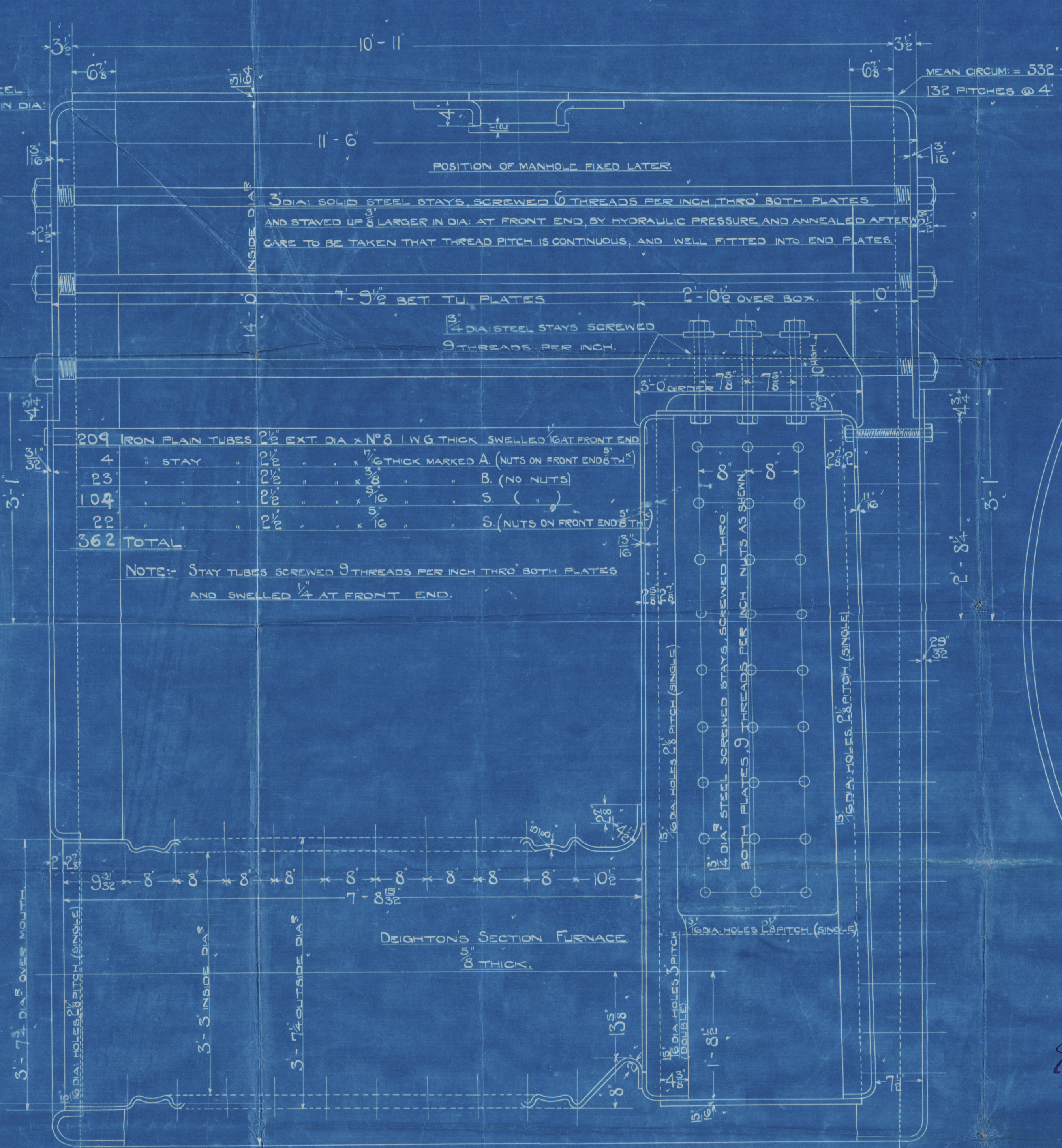
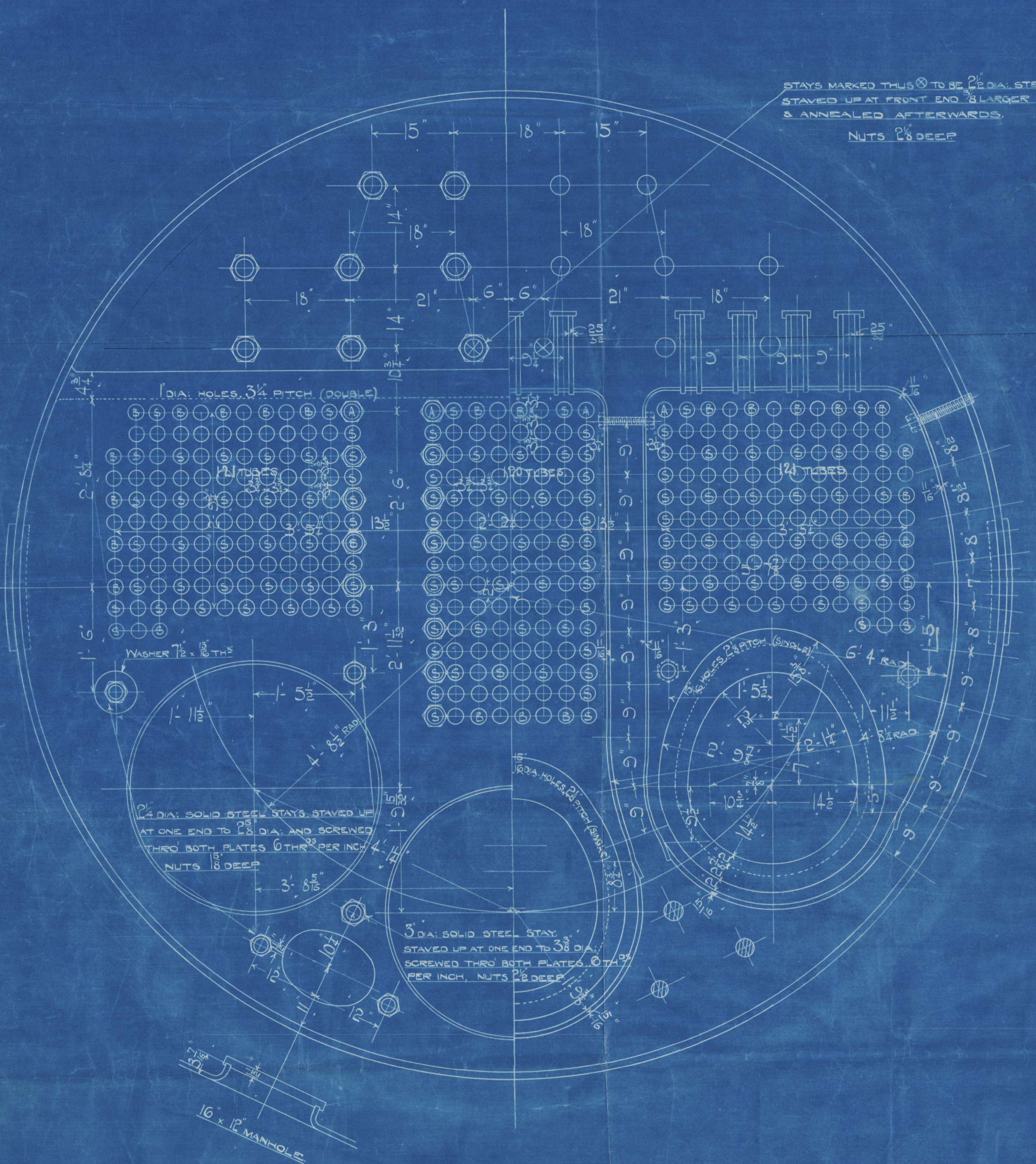


DOUBLE BUTT STRAPS 1/2" THICK INSIDE 1/4" THICK OUTSIDE.  
1/2" DIA. HOLES, 10 1/2" PITCH.  
ALL HOLES DRILLED IN PLACE.  
TENSILE STRENGTH OF SHELL & BUTT STRAPS  
29 TO 33 TONS.  
TO PASS BOARD OF TRADE & LLOYD'S SURVEY  
WORKING PRESSURE 215 LBS. PER SQ. IN.

EFFECTIVE AREA OF STAYS.		
DIA.	0 THREADS	9 THREADS
3 1/2"	7.24	
3"	6.1	
2 1/4"	3.26	
2"		2.36
1 3/4"		2.03



SKETCH SHOWING SCREENED STAYS  
THRO' SHELL WING BOX.

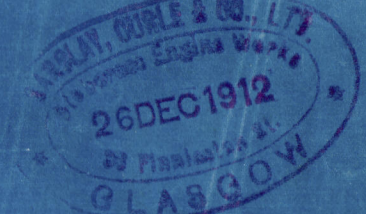
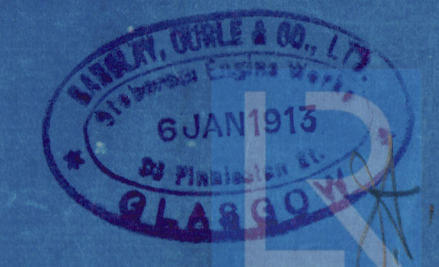


T. S. ENGINES N° 512

MAIN BOILERS.

SCALE 1/4" = 1' FOOT.

G - OFF.



From BARCLAY, CURLE & CO., Ltd.,  
STOBCROSS ENGINE WORKS.

*Enclosure.*

W1020-0028 1/2

Glasgow

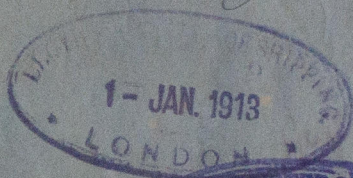
W1020-0028

Barclay Currie & Co  
No 512

W. 215 lb per cwt

6 Main Boilers

Empire Helford  
1/5 Czaritzza



GLASGOW REPORT No.

35136

RETAIN



© 2020

Lloyd's Register  
Foundation