

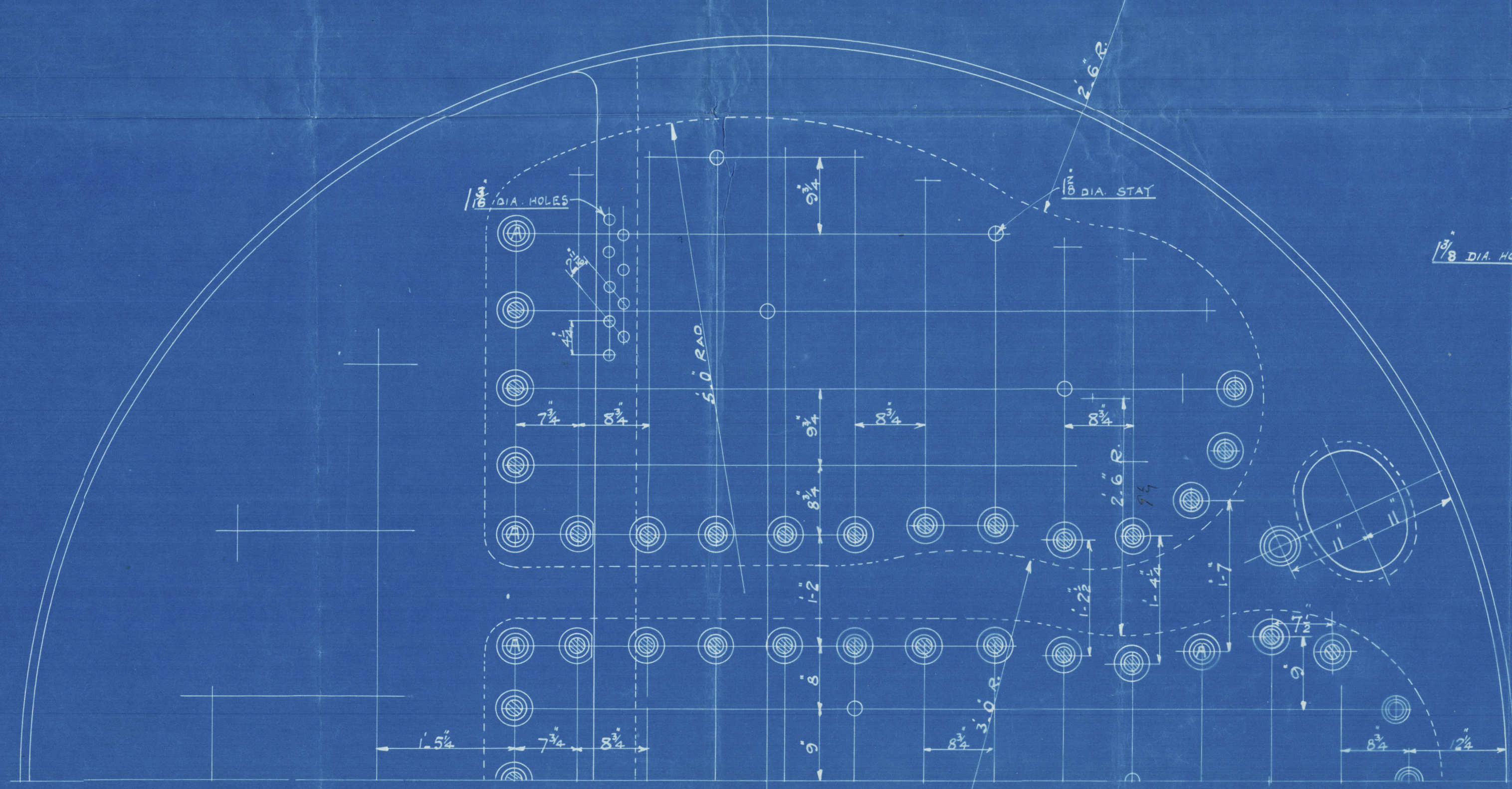
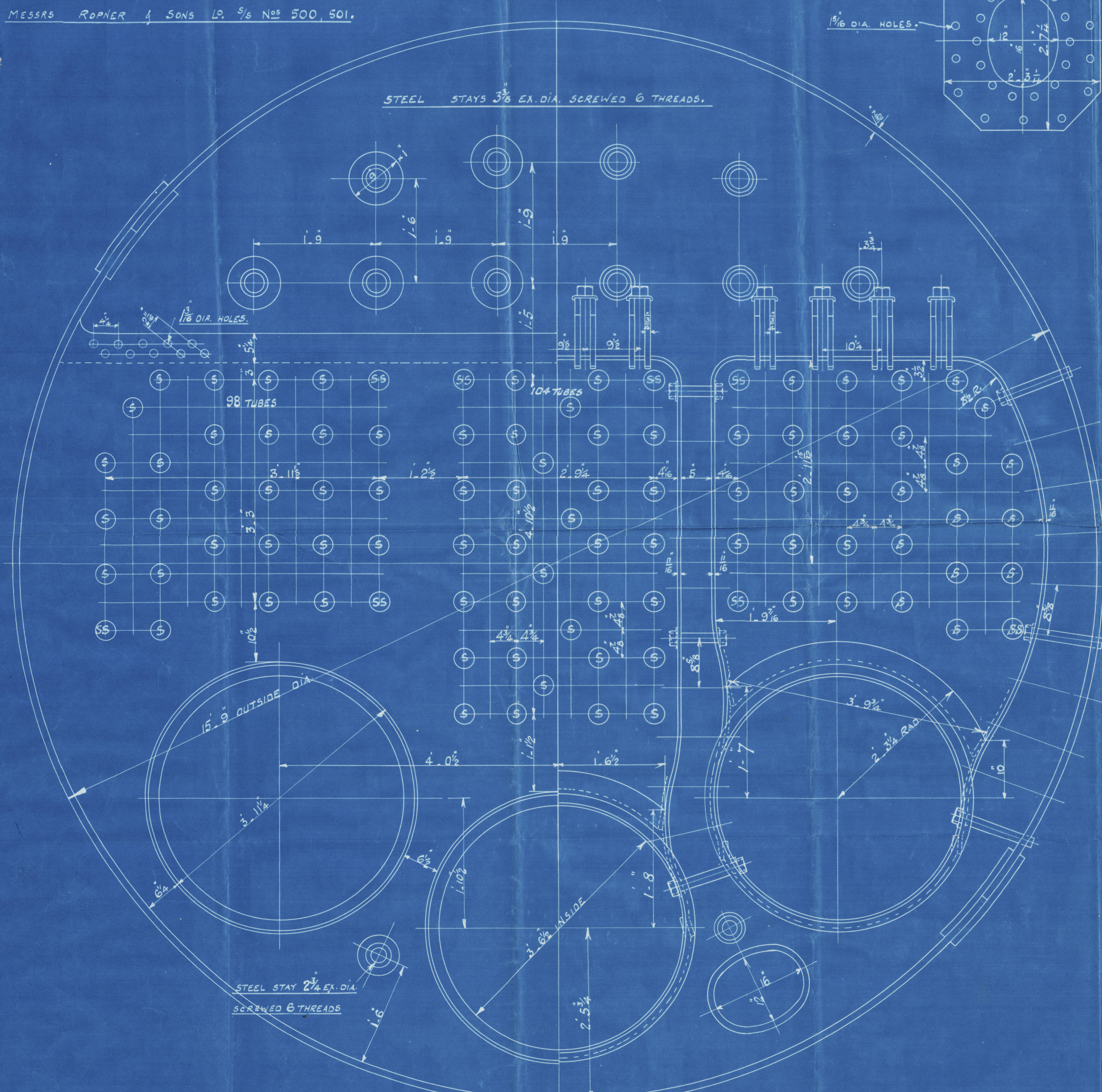
MARINE ENGINES NO 1815 1816

MESSRS. ROYNER & SONS LONDON NO 500, 501.

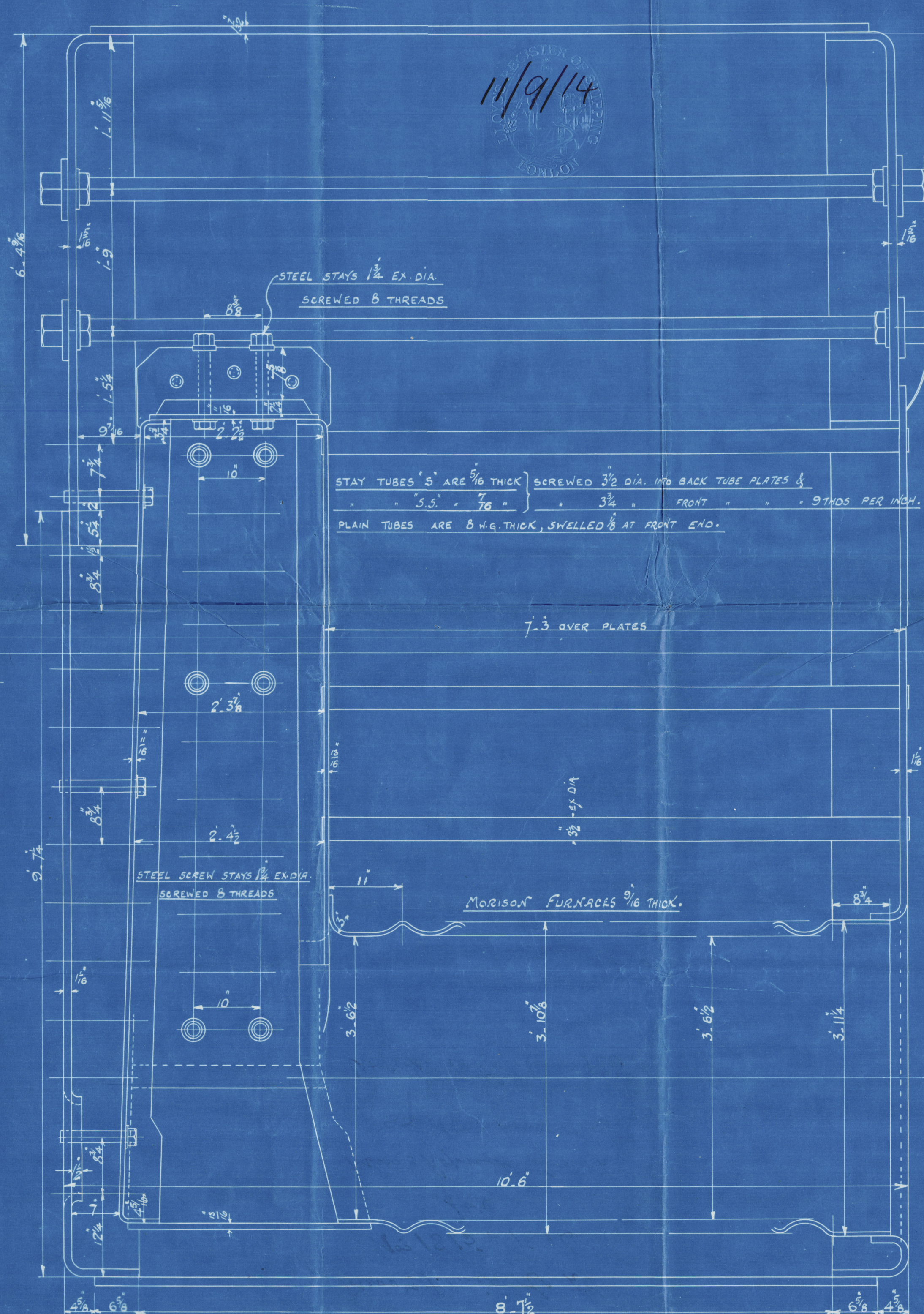
TOP MANHOLE STIFFENING PLATE, 1/2" THICK.

1/8" DIA. HOLES.

STEEL STAYS 3 3/8" EX. DIA. SCREWED 6 THREADS.

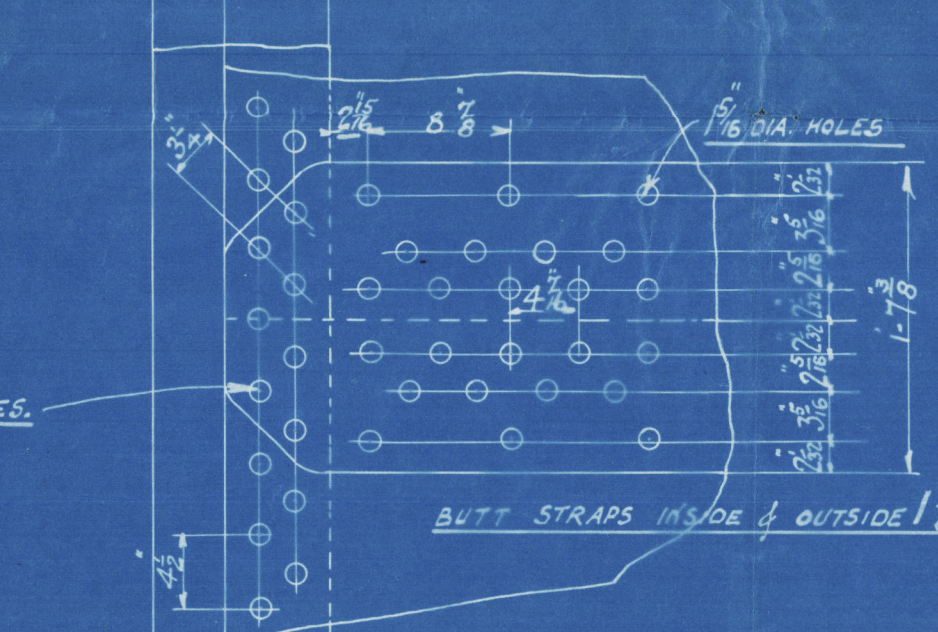


STEEL SCREW STAYS MARKED A ARE 2" EX. DIA. NUTTED
OTHER ARE 1 3/4" EX. DIA.
SCREWED 6 THREADS



STAY TUBES "S" ARE 5/8" THICK SCREWED 3 1/2" DIA. INTO BACK TUBE PLATES &
"S.S." "7/8" " 3 1/2" " FRONT " " 9 THOS PER INCH.
PLAIN TUBES ARE 5/8" THICK, SHELLLED 7/8" AT FRONT END.

MORISON FURNACES 9/16" THICK.

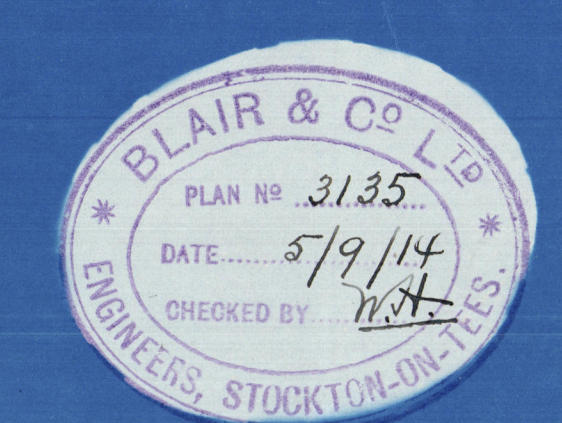


TENSILE OF MATERIAL
SHELLS, BUTT STRIPS, MANHOLE STIFFENERS & DOORS 29 3/4 TO 33 TONS.
GIRDERS 28 - 32 "
OTHER PLATES 26 - 30 "

BOILERS. 2 OFF.
SCALE 1 INCH TO A FOOT.

BOILERS & MOUNTINGS TO "LLOYD'S" REQUIREMENTS & TESTS, HYDRAULIC TEST INCLUDED FOR 180 LBS. W.P.

TOTAL HEATING SURFACE IN TWO BOILERS = 4690 SQ. FEET.
GRATE " " " = 122.6 " "



Main Boilers

Messrs Blair & Co. Ltd

N^{os} 1815 & 1816

for

Messrs Roper & Sons Ltd

SS N^{os} 500 & 501

Working Pressure 180 lbs



*Pinhel
as
Ellawood*

1815

No. 5464
LLOYD'S TEST
360 lbs
11.2.15 - WM

S.S. N^o 500
Pinhel
S.S. *Ellawood*
Mdt Rpt N^o 8926

1816

No. 5492
LLOYD'S TEST
360 lbs
26.3.15 - WM

S.S. N^o 501
S.S. *Bilswood*
Mdt Rpt N^o 8982

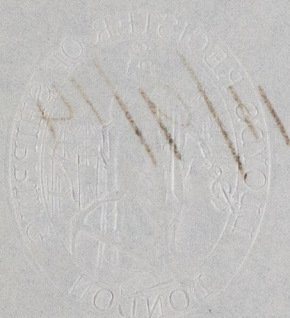


© 2020

Lloyd's Register
Foundation

W1019-0194

RECEIVED
SEP 7 1914
LLOYD'S REGISTER,
MIDDLESBROUGH.



© 2020

Lloyd's Register
Foundation