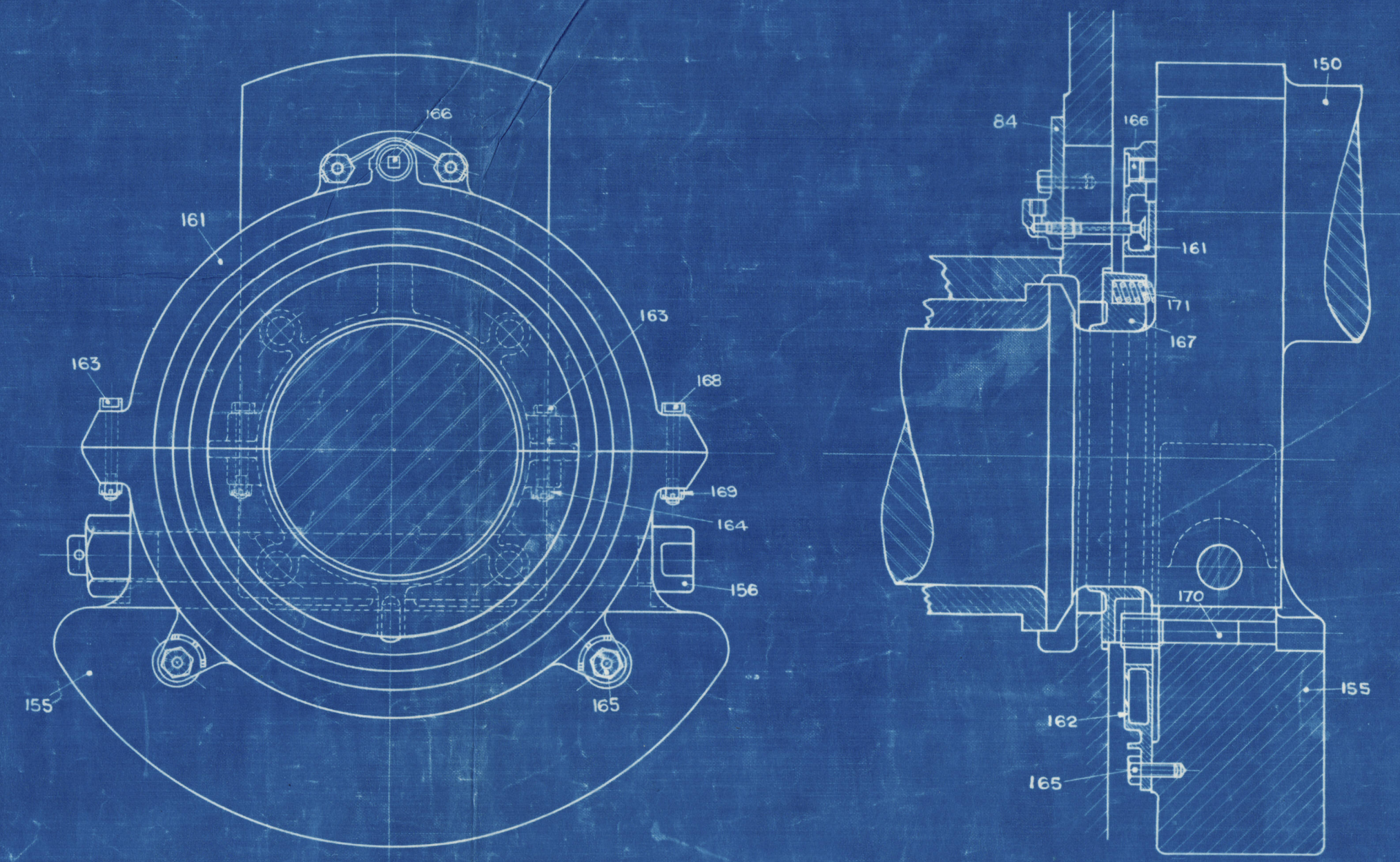
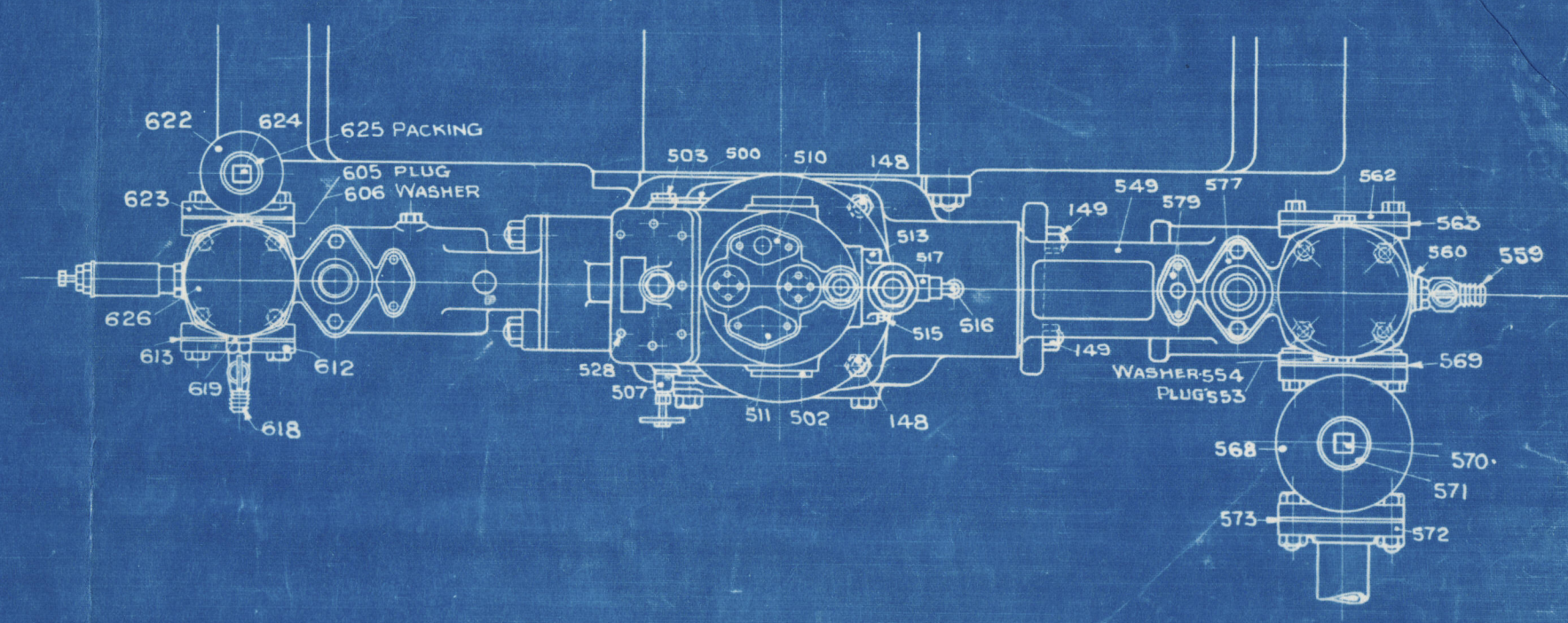


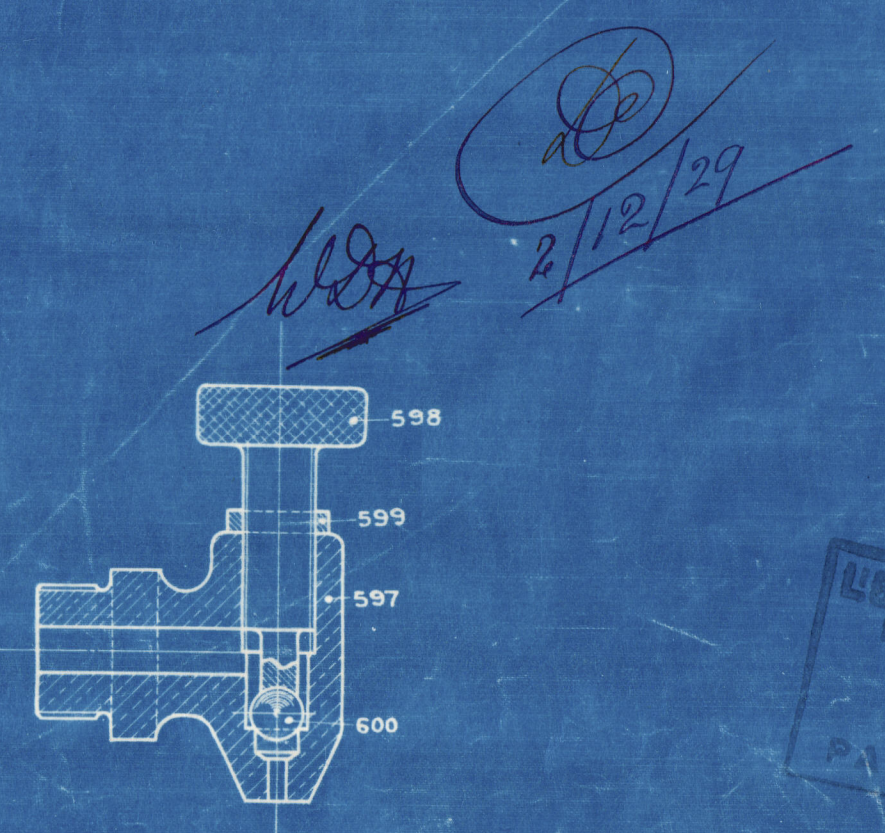
EXHAUST SILENCER. (STATIONARY.)



CRANKPIN LUBRICATOR.



PLAN OF PUMP END.



WATER AND BILGE PUMP AIR VALVE.

DWG No 7364 L. GARDNER & SONS, LTD., PATRICROFT.	TYPE 4J8 ENGINES	FOR ORDERING LIST SEE DWG. Nos 7367 & 7368.	IMPORTANT. IN ANY ENQUIRY OR ORDER FOR PARTS, NUMBER OF ENGINE MUST BE STATED TO ENSURE PROMPT ATTENTION. ENGINE NUMBER WILL BE FOUND ON THE TOP CORNER OF CRANKCASE AT GOV END.	MATERIAL	MACHINED	SUPERSEDES	DWG No 7364 W107-0107
	DESCRIPTION DETAIL ORDERING PLAN. SEE ALSO DWG. Nos 7365 & 7366.	JIG Nos		SUPERSEDED BY			
	SCALE NOT TO SCALE	DATE 27-7-28		DRAWN BY			
	TRACED BY	CHECKED BY					

L. Gardner & Son

418 Engine
for

Grangemouth

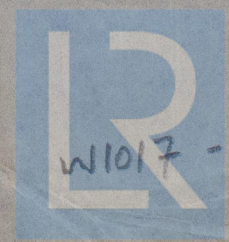
Dockyard's 17.

No. 418.

"John Williams V."

GLASGOW REPORT No 50569

General check



© 2019

W1017-0107
The Register of Shipping
Foundation