

26/6/35

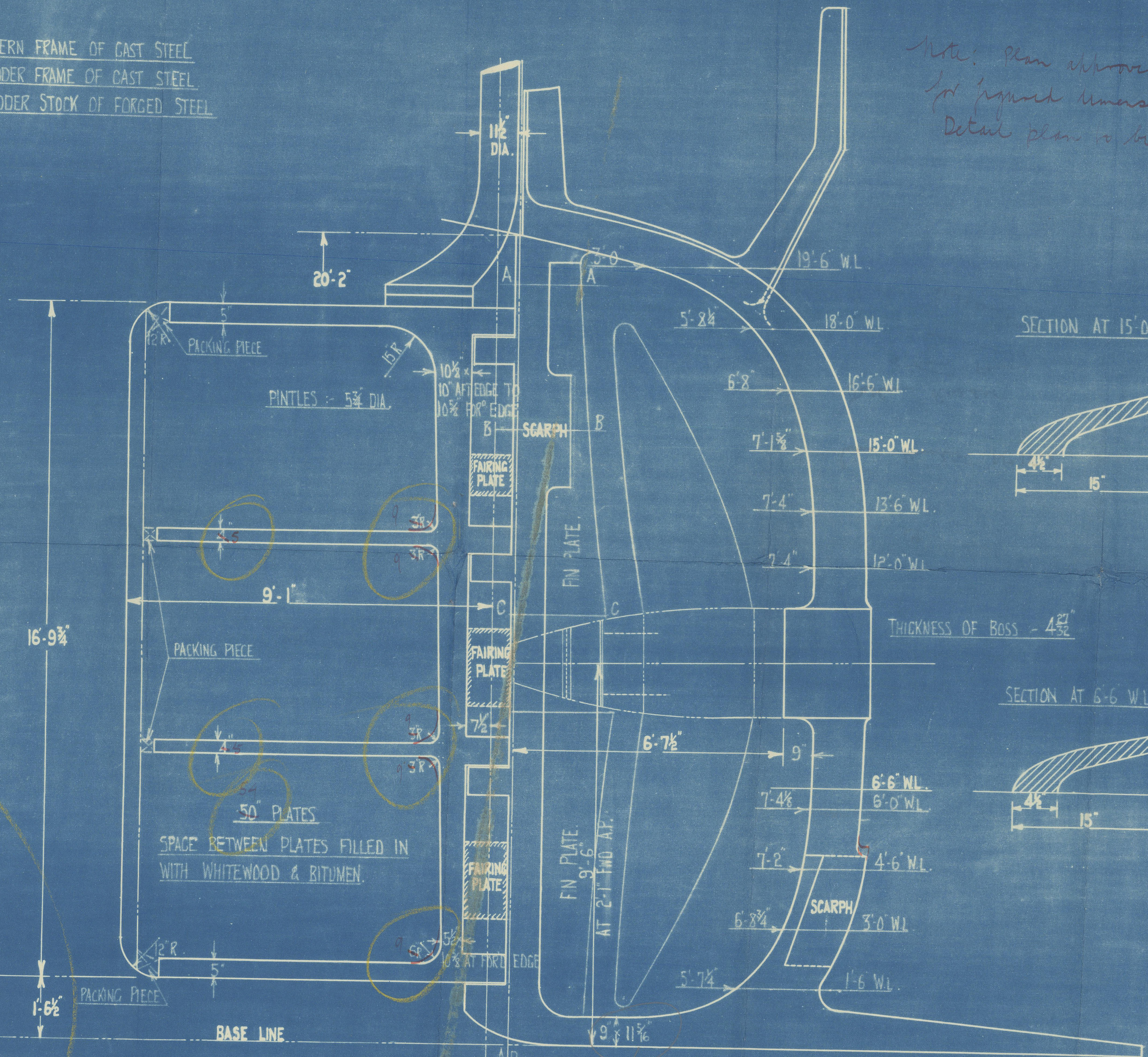
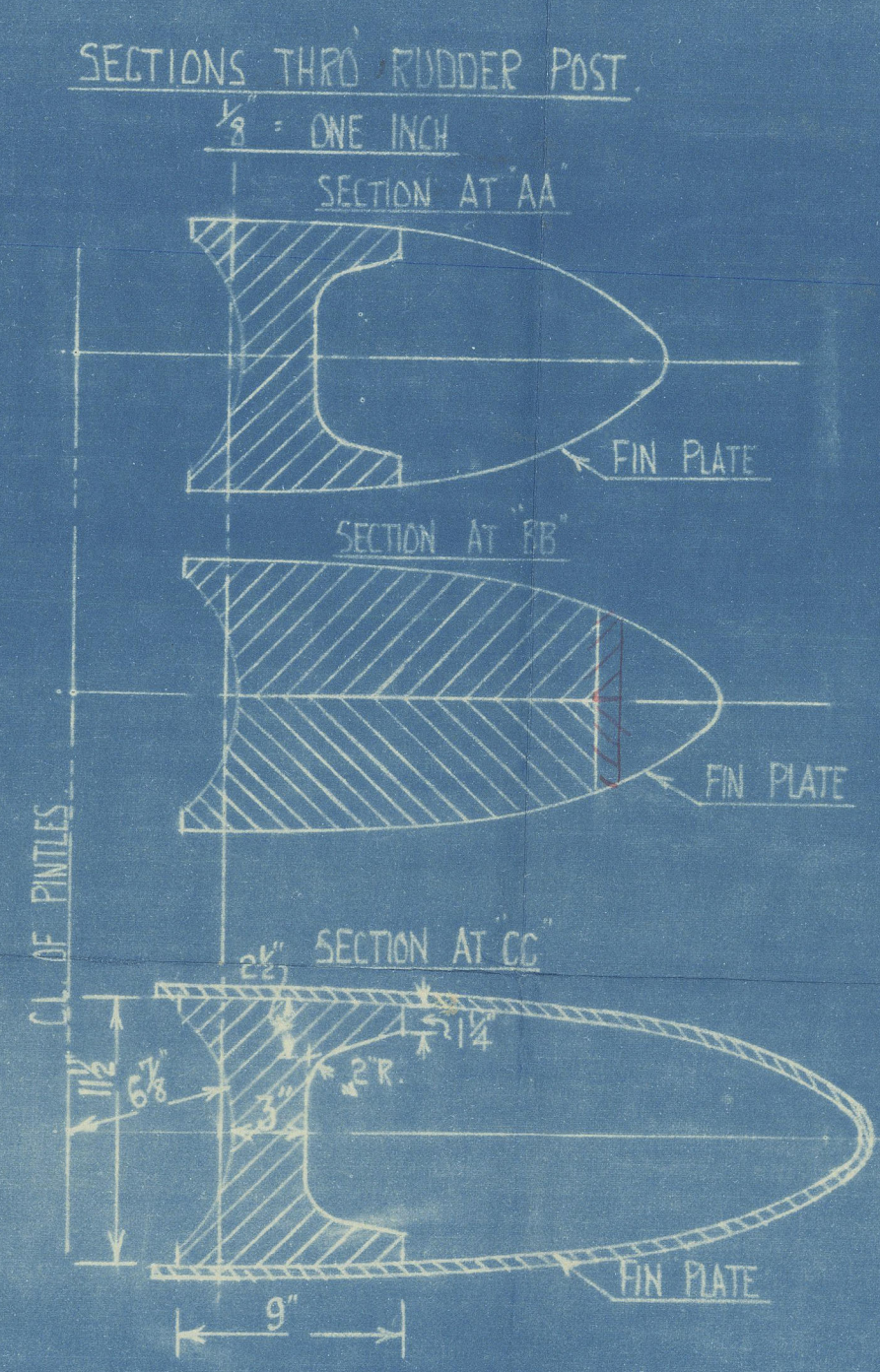
# № 1513 SHIP. OUTLINE OF RUDDER & STERNFRAME.

SCALE: 1/2" = ONE FOOT.

RUDDER AREA ABAFT C.L. OF PINTLES	=	146.4 SQ. FT.
C.G. OF AREA	=	4.71 FT.
LOYDS A-D.	=	690
DIA. OF RUDDER STOCK FROM TABLE	=	11 1/2" SPEED 10 3/4 KNOTS.

STERN FRAME OF CAST STEEL  
RUDDER FRAME OF CAST STEEL  
RUDDER STOCK OF FORGED STEEL

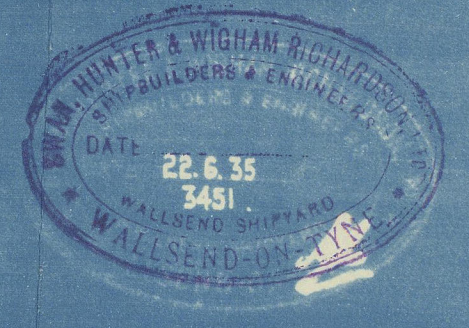
Note: Plan approved  
for figured dimensions only  
Detail plan to be submitted



Agreed by letter  
29.6.35  
originally  
Submitted  
J.W.



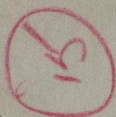
TYPICAL SECTION.



DRAWN BY J.M.W.



(4)



Luan Hunters No 1513

Outline Rudder

& Stern Frame

See plan No 10

SS HOPESTAR

NEWCASTLE ON TYNE.

Report No. 93528.



© 2020

Lloyd's Register  
Foundation

W1014-0180