

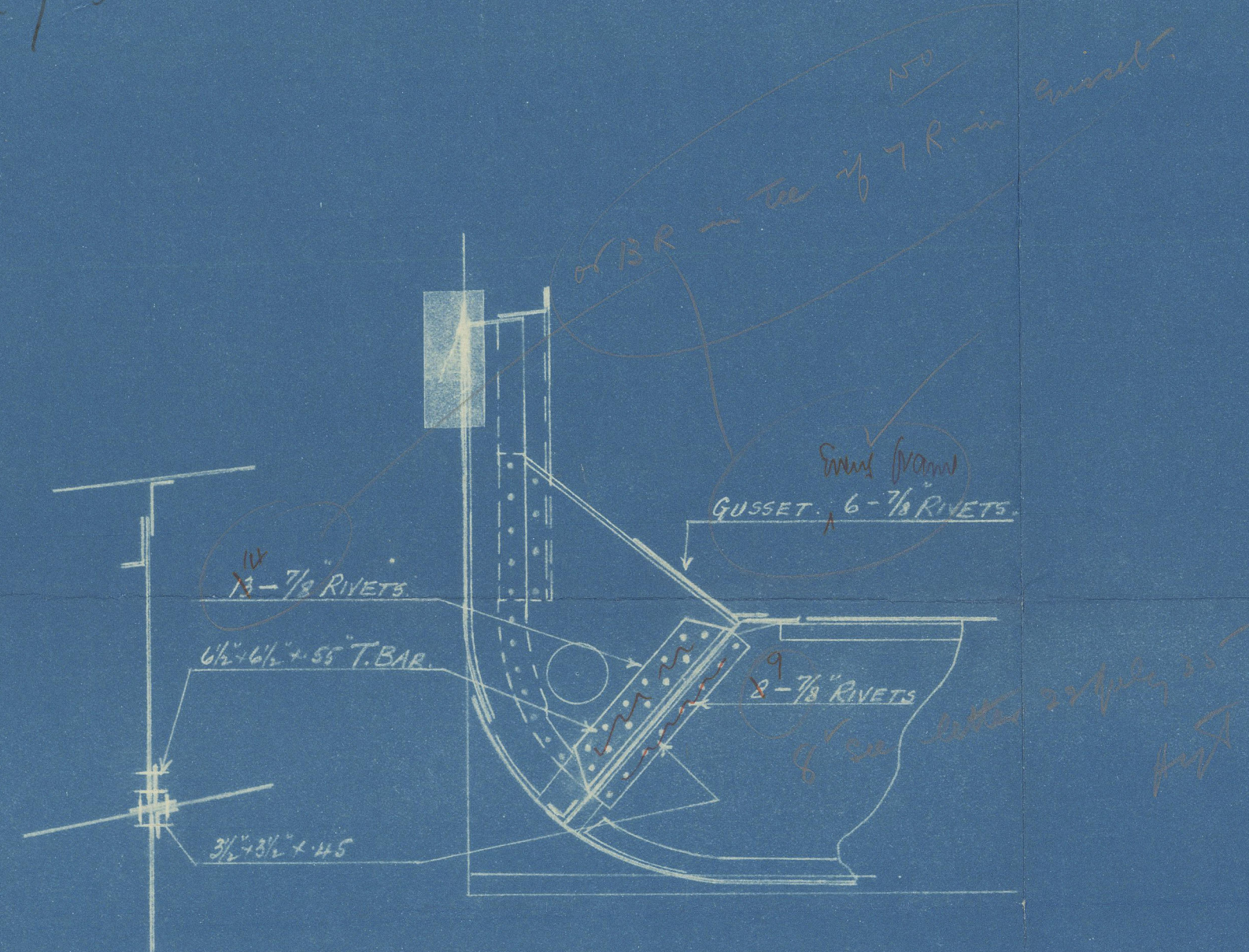
No 1513 SHIP.

PROPOSED TEE BAR CONNECTIONS OF TANK SIDE KNEES.

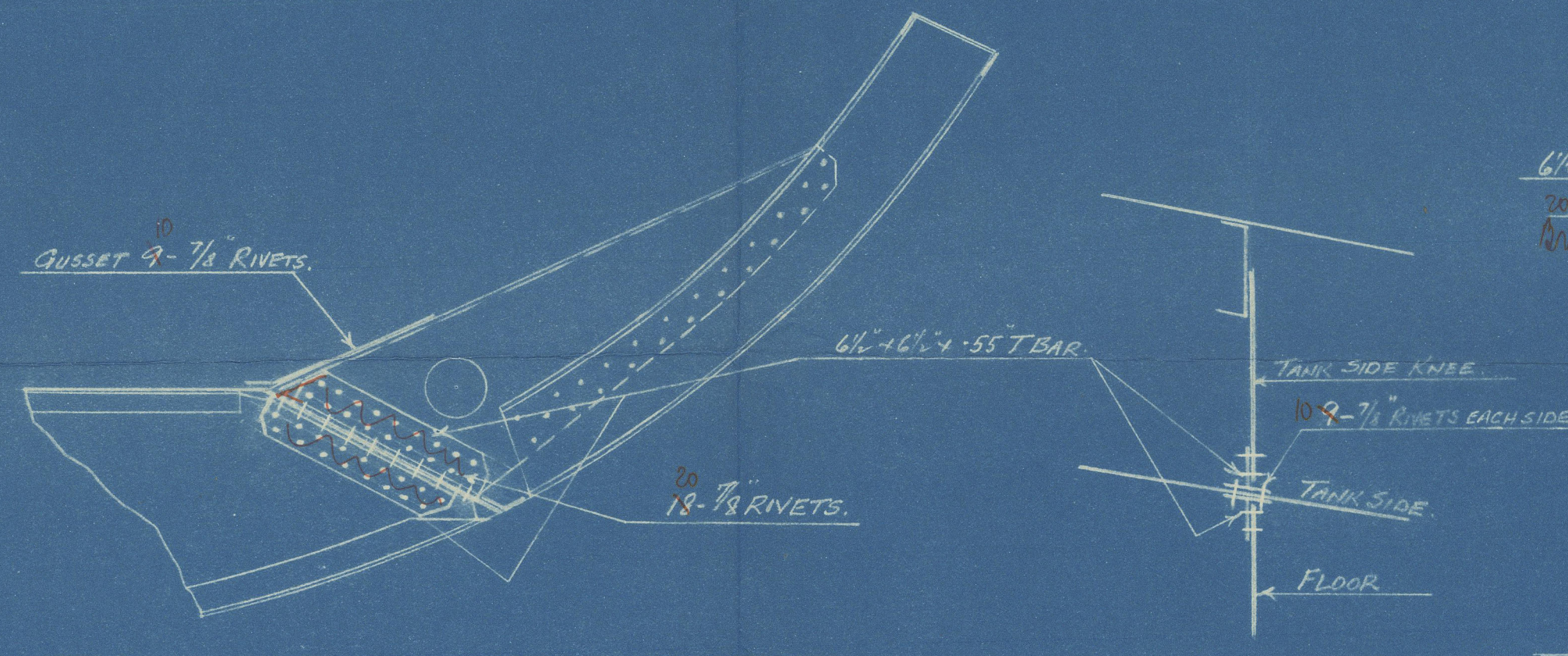
SCALE $\frac{1}{2}$ " = 1 FT.

Assumed $\frac{1}{2}$ " oil in double bottom.

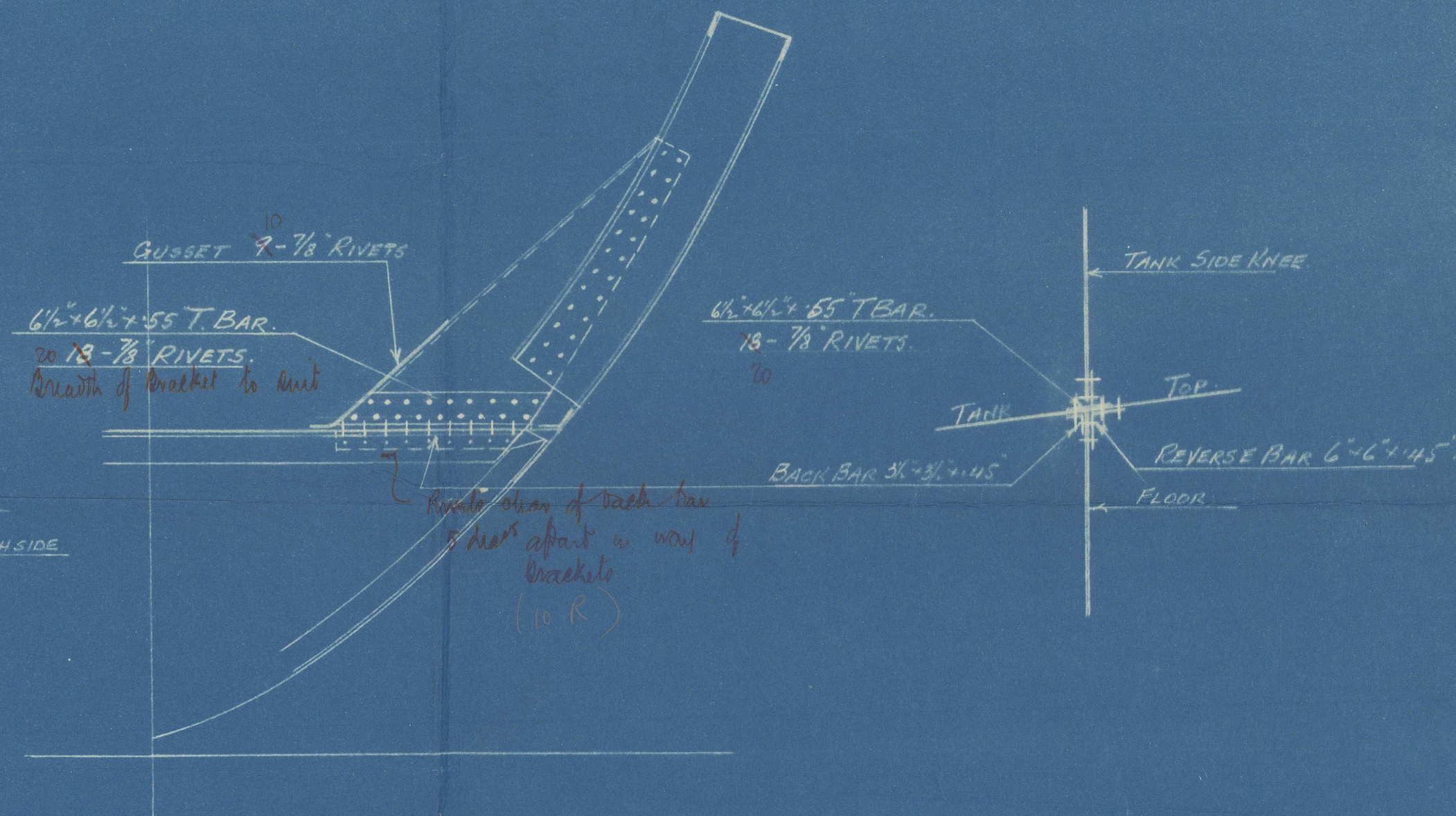
19-7-35



SKETCH SHOWING PROPOSED TEE BAR
CONNECTION OF TANK SIDE KNEES.
FROM AFT TO FRAME 142.



SKETCH SHOWING PROPOSED TEE BAR
CONNECTION OF TANK SIDE KNEES.
FROM FRAME 143 TO 154.



SKETCH SHOWING PROPOSED TEE BAR
CONNECTION OF TANK SIDE KNEES
FROM FRAME 155 TO 160



(14)

Swan Hunter's No 1513

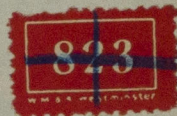
the bar Connections
of Lamb. S. de Kruis

1513

SS HOPE STAR

NEWCASTLE ON TYNE.

Report No. 93528



© 2020

Lloyd's Register
Foundation

W1014-0171