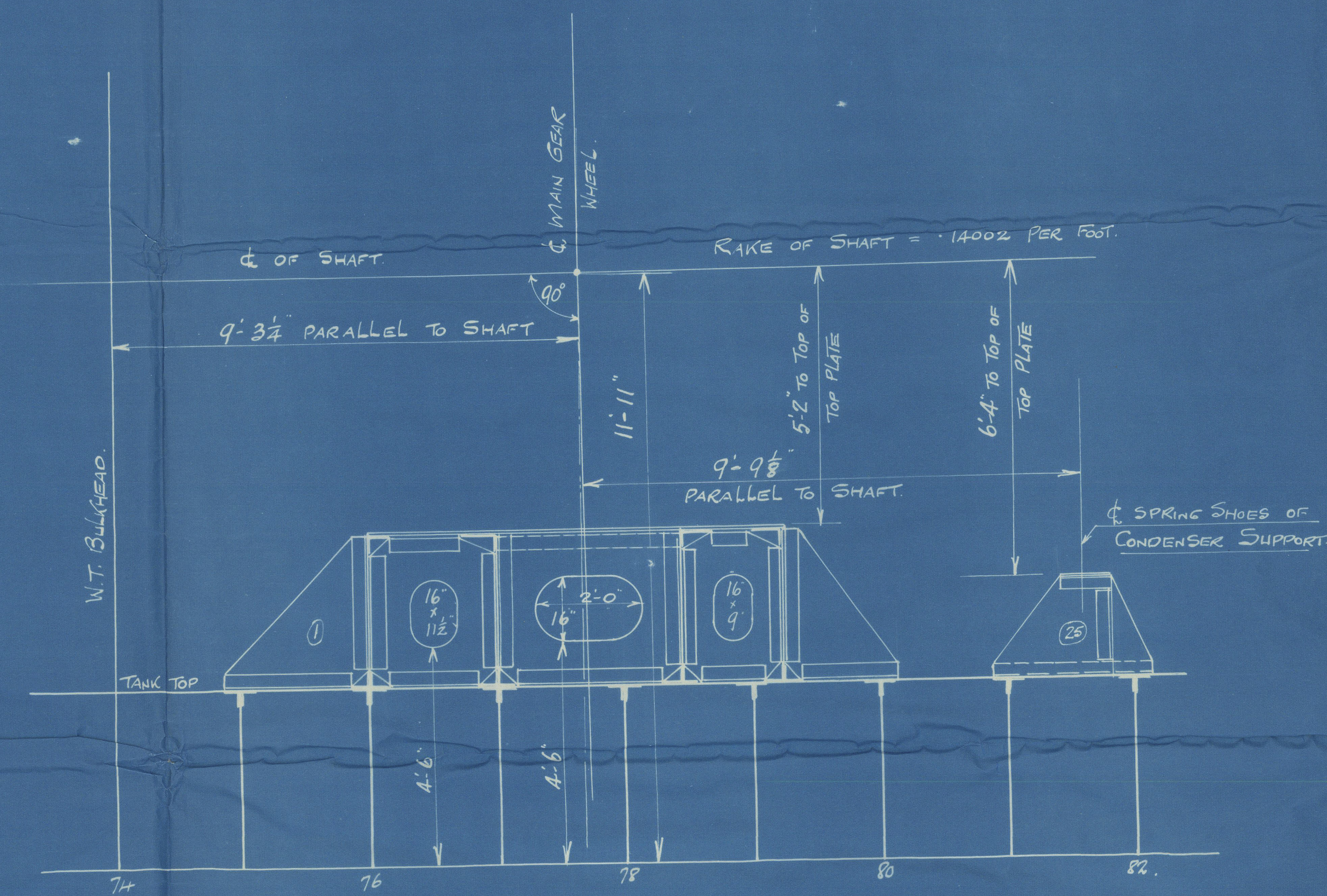
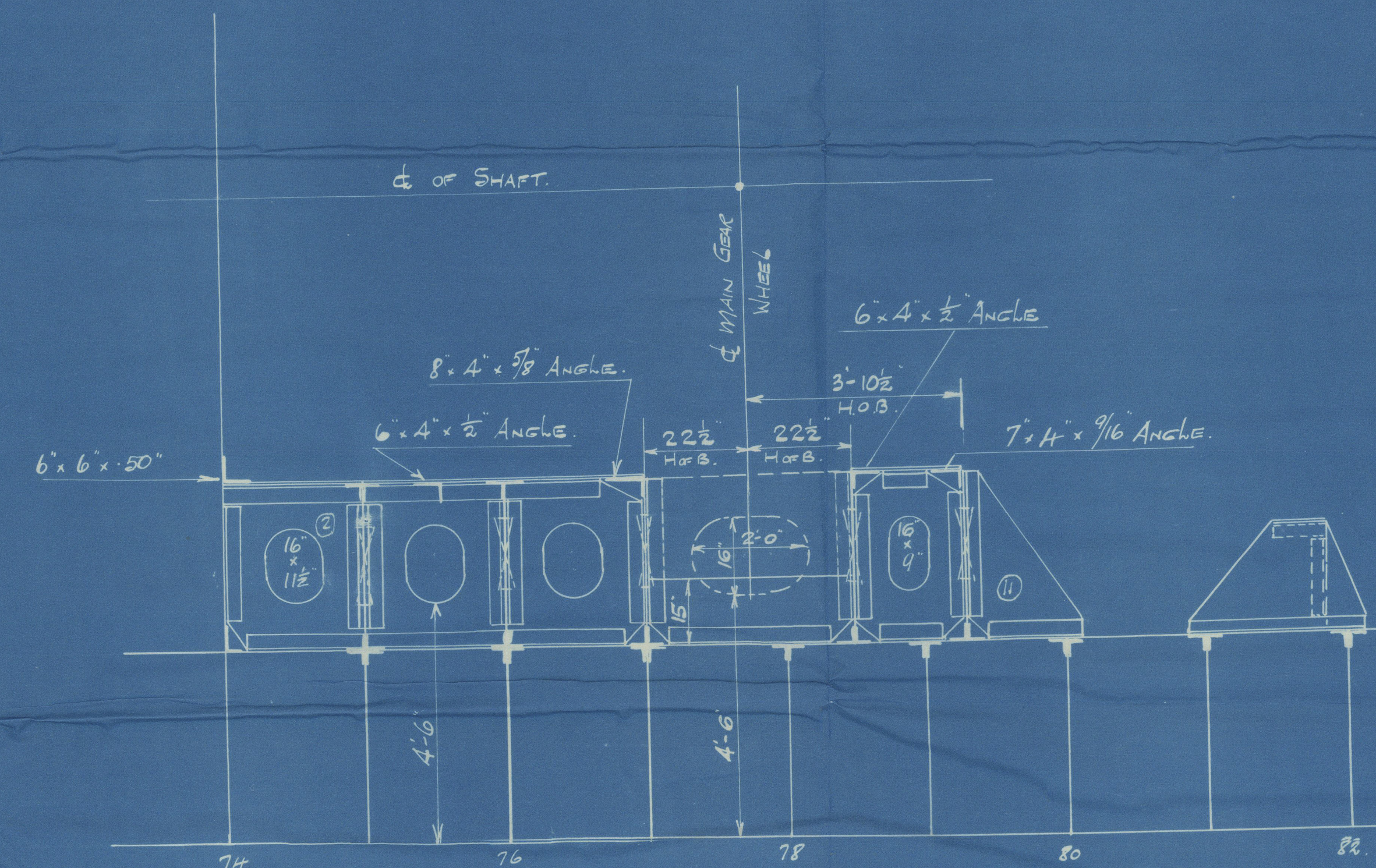


28.8.35

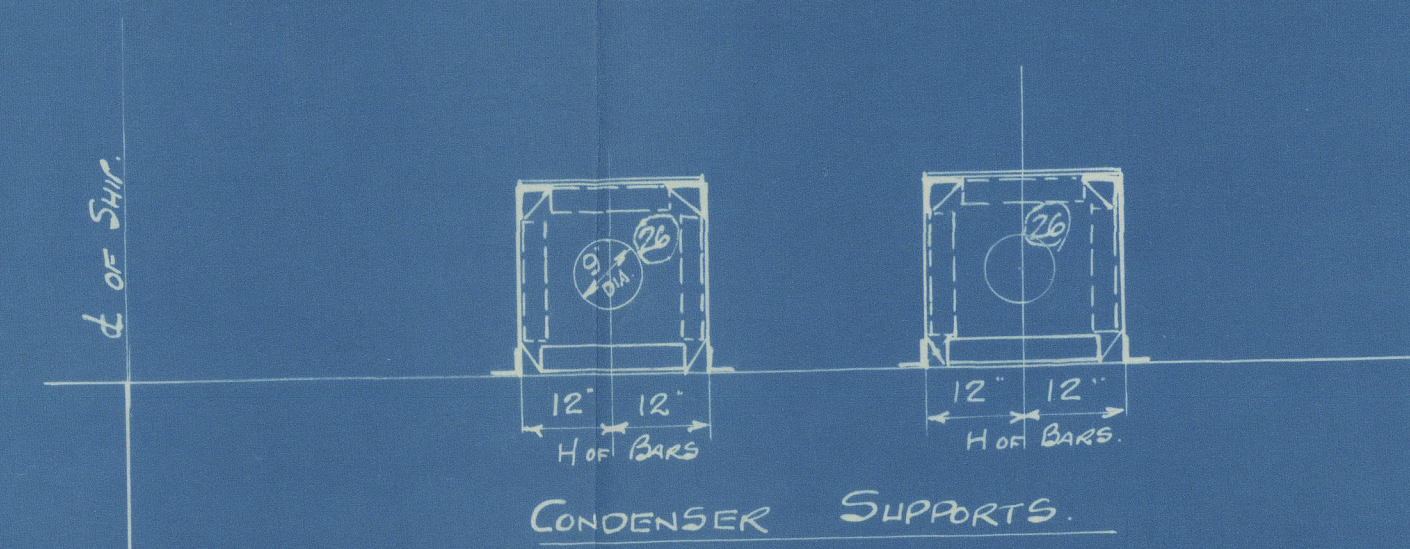
# Nº 1513 TURBINE SEATING SCALE $\frac{1}{2}'' = 1 \text{ FOOT}$



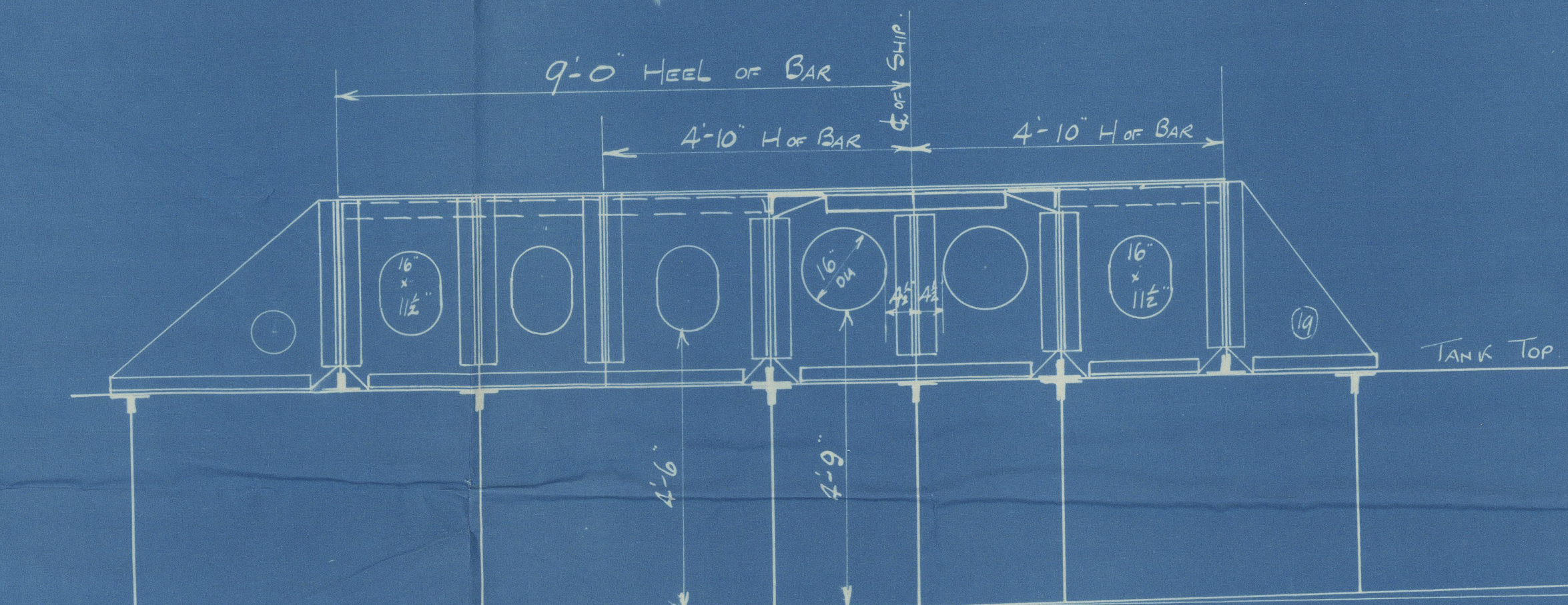
ELEVATION AT "AA"  
LOOKING TO PORT FROM CENTRE



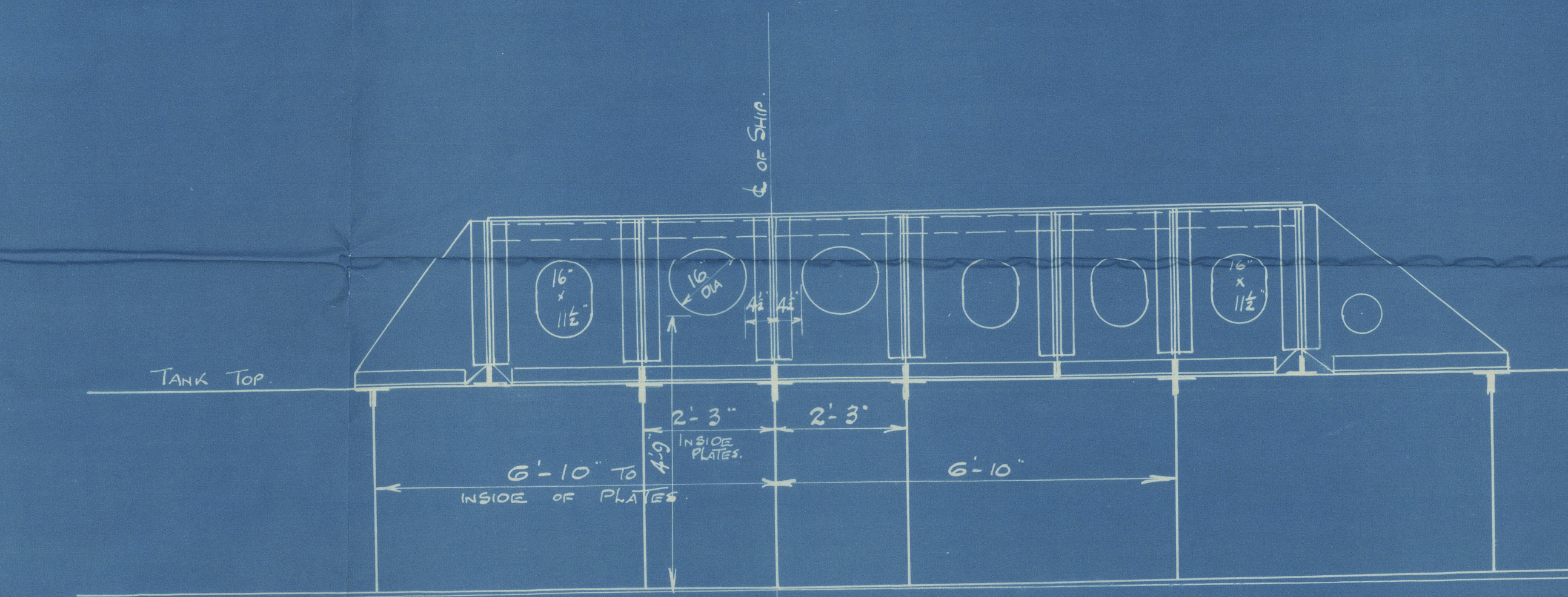
ELEVATION AT "BB"  
LOOKING TO PORT FROM CENTRE



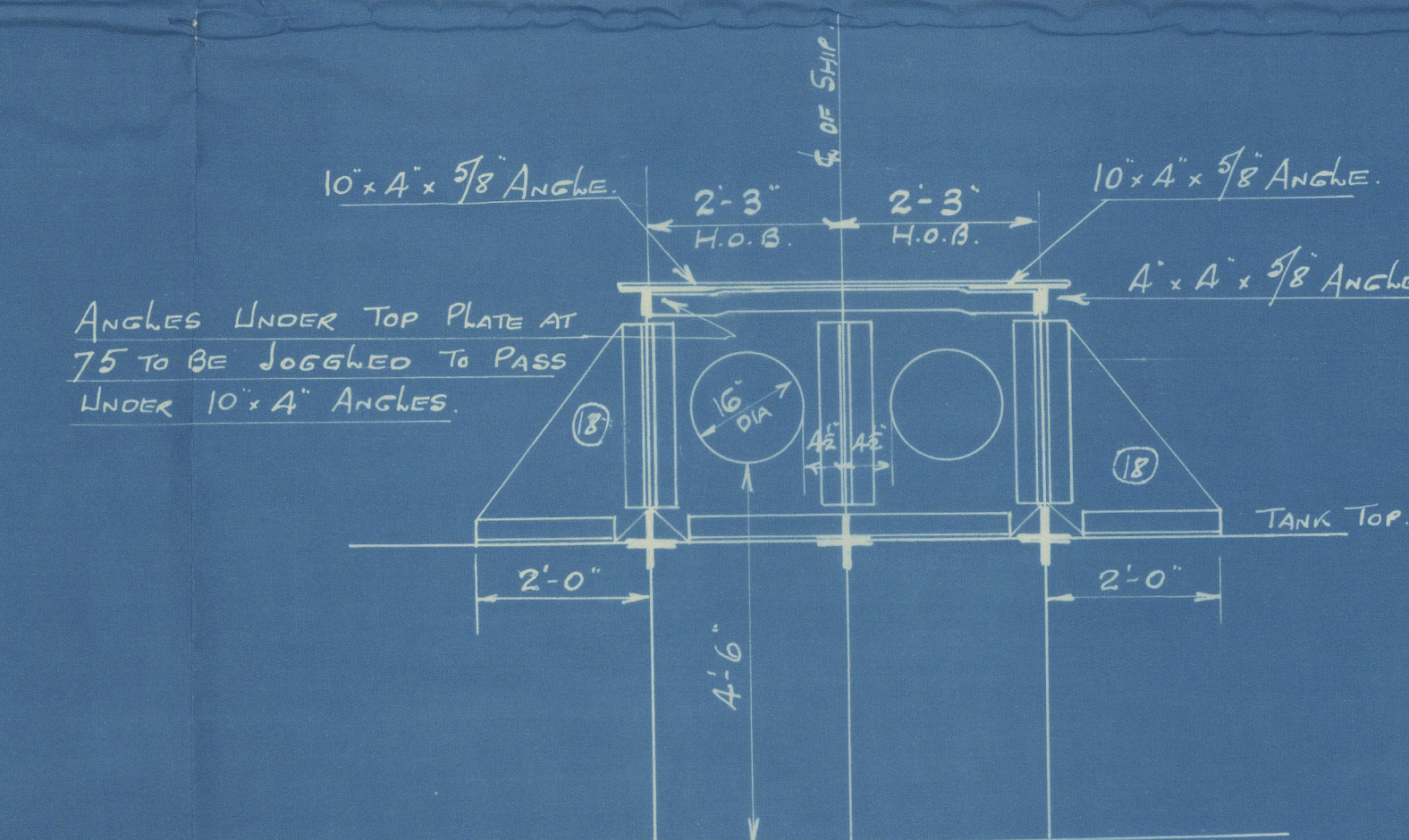
SECTION AT 82. LOOKING AFT.



SECTION AT 76 FRAME  
LOOKING FORWARD



SECTION AT 80 FRAME  
LOOKING AT FORE END OF SEATING

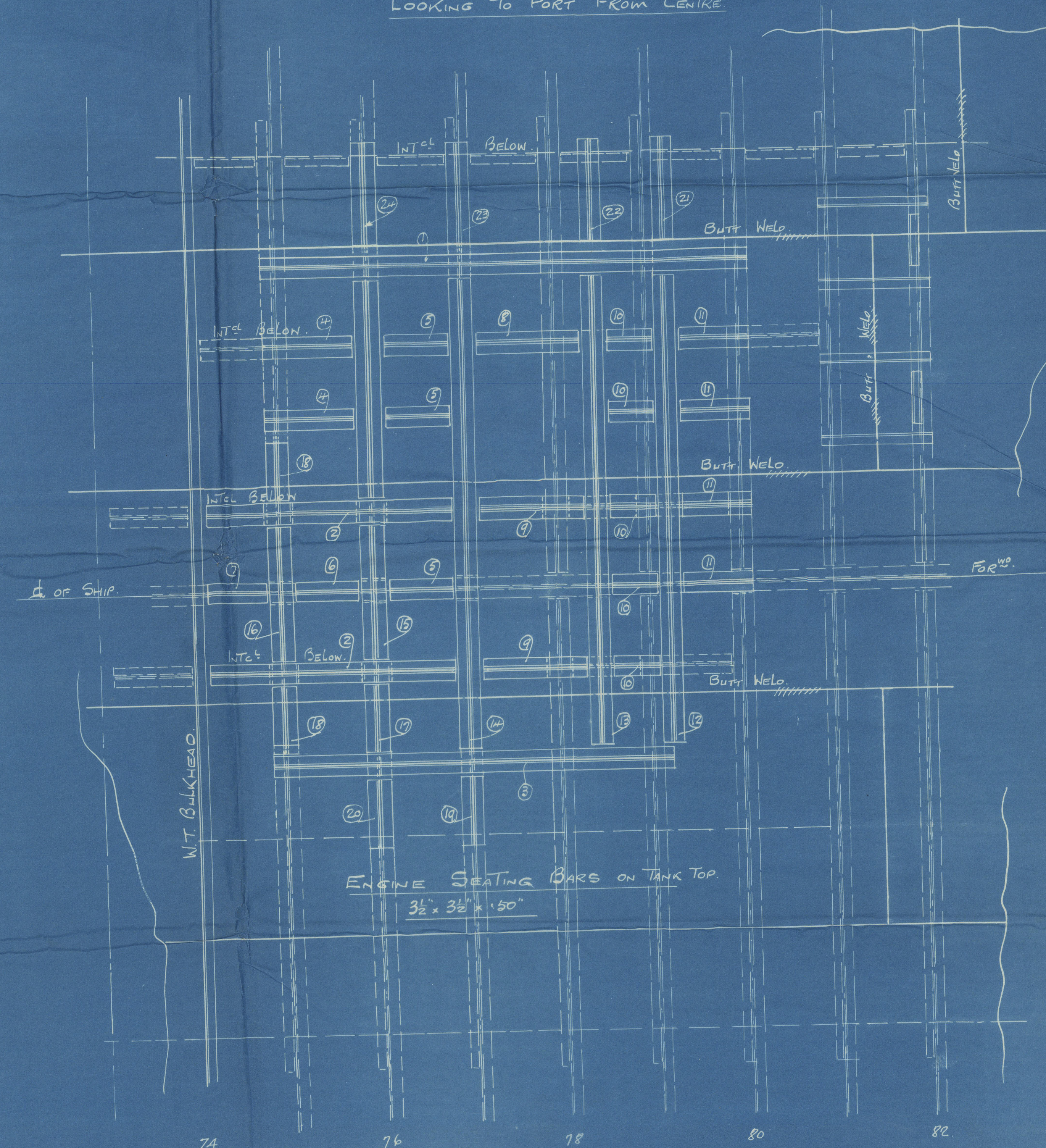
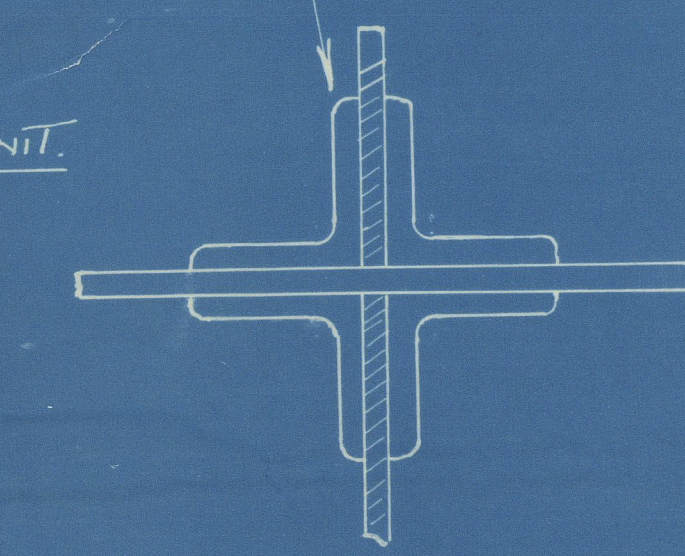


SECTION AT 75 FRAME  
LOOKING AFT.

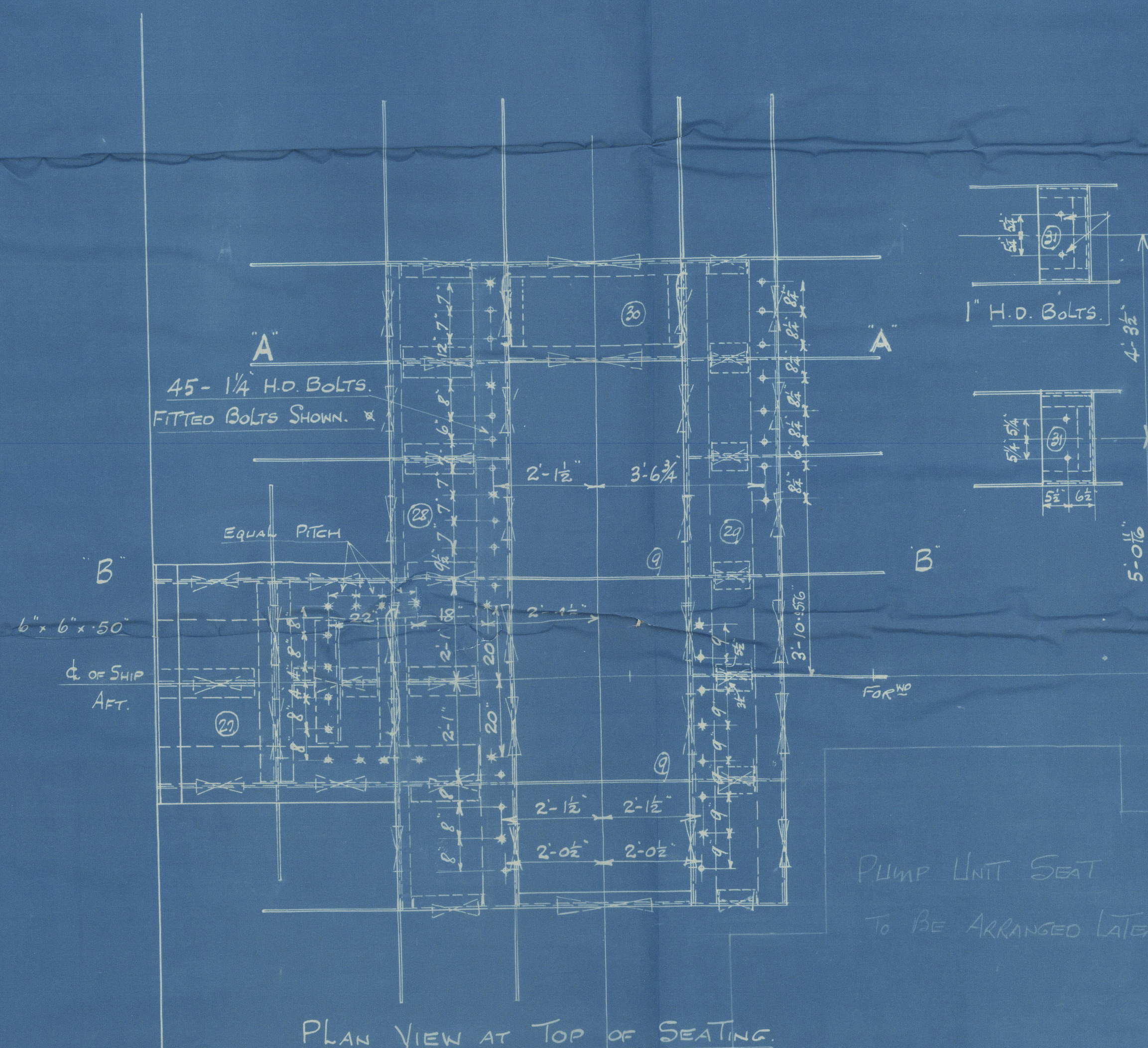
## NOTES.

TOP OF SEATS TO BE PARALLEL WITH CL OF SHAFT.  
TOP PLATES TO BE  $\frac{7}{8}$ " THICK, FLUSH RIVETED ON TOP.  
SIDE AND GUSSET PLATES TO BE  $\frac{1}{2}$ " THICK FOR TURBINE AND CONDENSER SEATS.  
ANGLE BARS  $3\frac{1}{2} \times 3\frac{1}{2} \times \frac{5}{8}$  EXCEPT WHERE STATED OTHERWISE.  
TURBINE UNIT AND CONDENSER SUPPORTS TO BE RIVETED AND RIVETS KEPT CLEAR OF HOLDING DOWN BOLTS.  
PROVISION TO BE MADE FOR DRAINAGE THROUGH ALL SEATING.  
HOLDING DOWN BOLTS TO BE DRILLED BY W & E. CO. LTD  
EDGES OF PLATES IN DOUBLE BOTTOM AND SEATINGS TO BUTT UP TO ADJACENT PLATES AS SHOWN.

2" PACKING UNDER TURBINE UNIT.

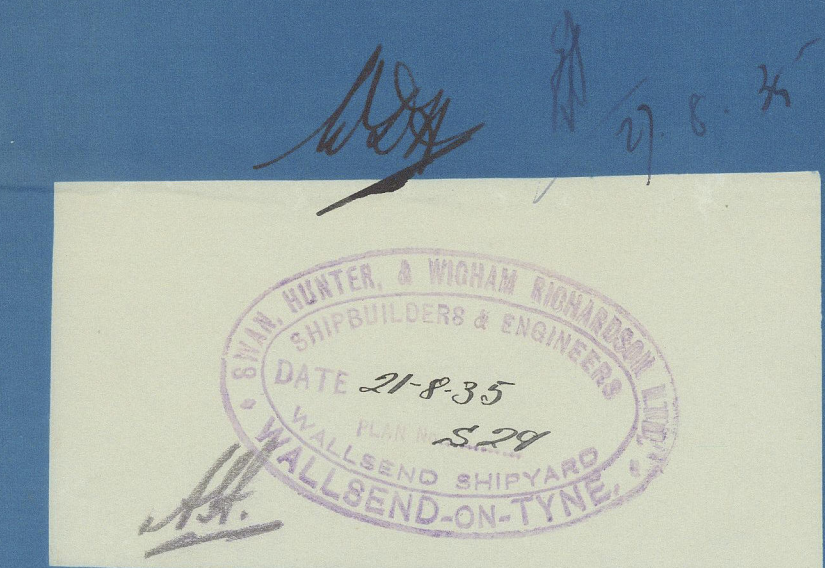


PLAN AT TANK TOP



PLAN VIEW AT TOP OF SEATING

PUMP UNIT SEAT  
TO BE ARRANGED LATER





(22)

Dwan Hunters No 1513

S.H. 1513

Turbine Seating

SS "HOPESTAR"

NEWCASTLE ON TYNE.

Report No. 93528.



24

© 2020 W1014-0163



David Ross  
Foundation