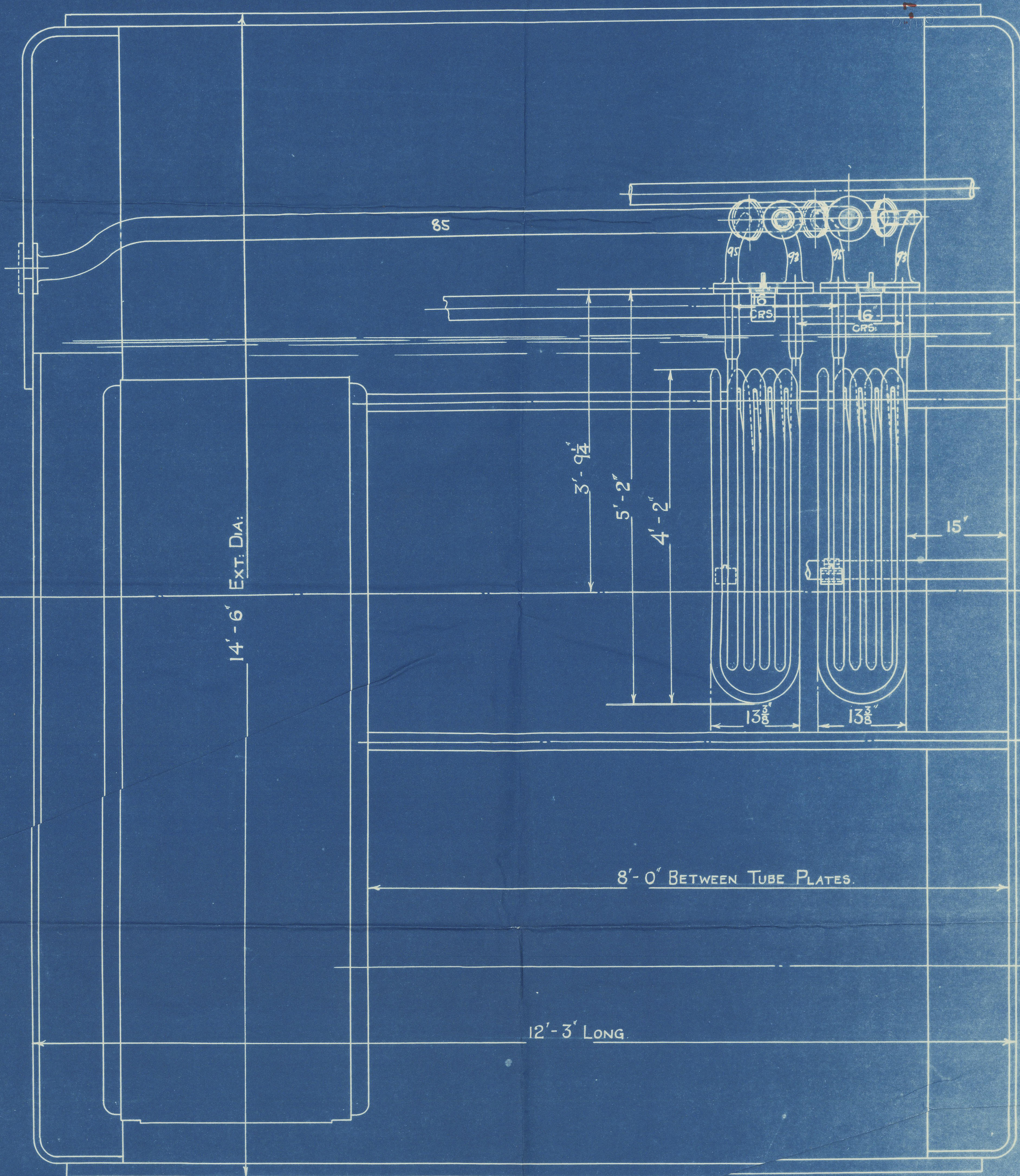


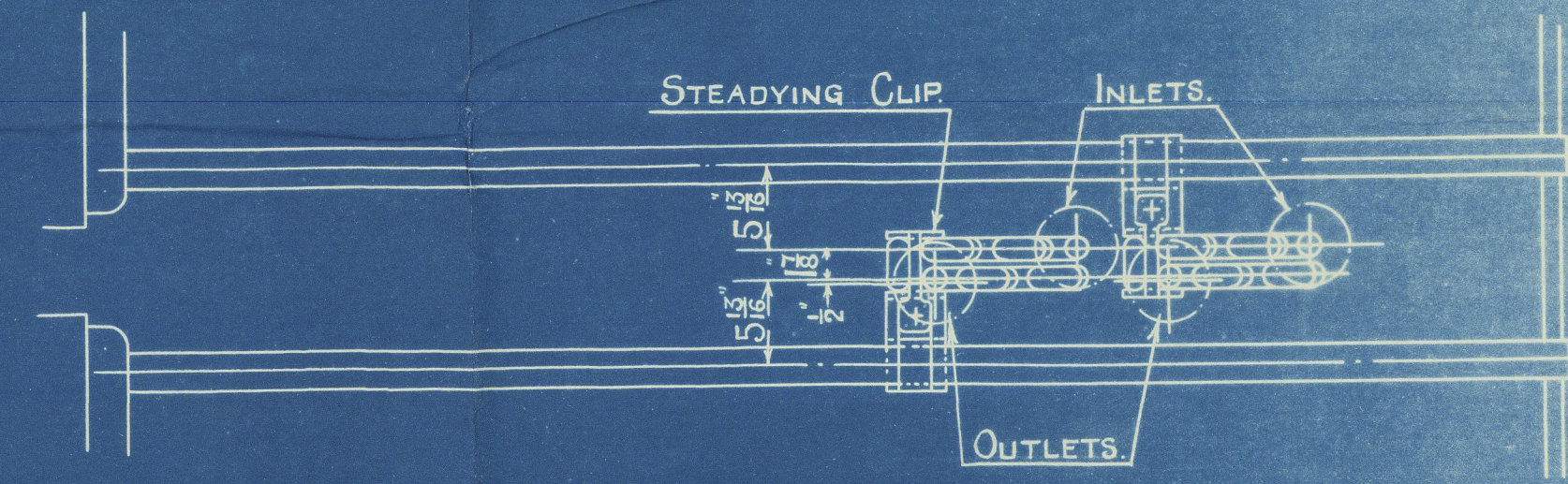
2. BOILER.



14'-6" EXT. DIA.

8'-0" BETWEEN TUBE PLATES.

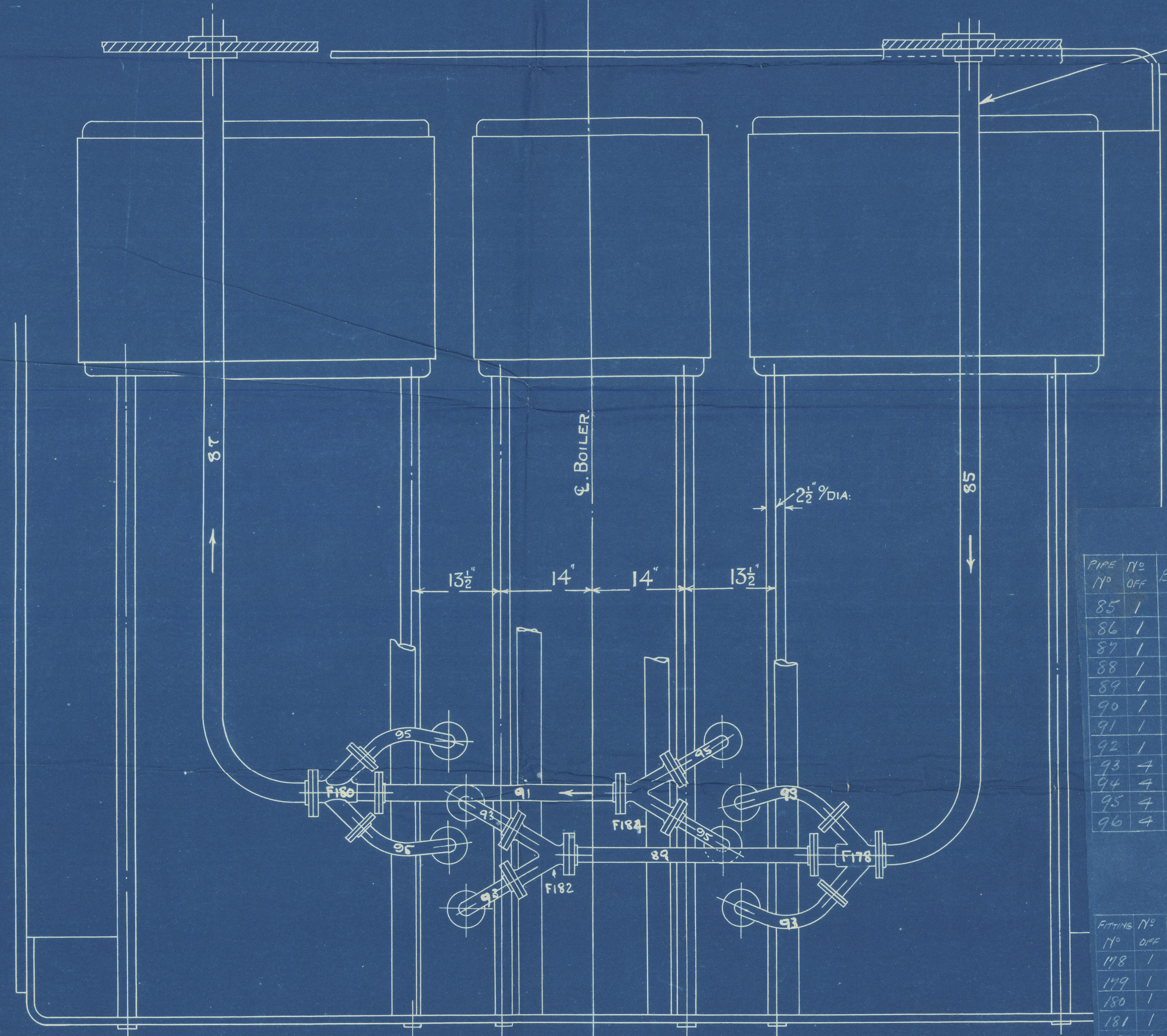
12'-3" LONG



ARRANGEMENT OF DE-SUPERHEATER
FOR MAIN BOILERS.
CONTRACT NO. 919.

SCALE: 1" = 1. FOOT.

SKETCH NO. 45



FOR CONTINUATION
SEE BOILER ROOM
PIPE ARRANGEMENT
SKETCH NO. 44

PORT BOILER.

STARBOARD TO OPPOSITE HAND.

LIST OF PIPES.

PIPE NO.	NO. OFF.	BORE	DESCRIPTION	MATERIAL	TEST PRESS. LBS./SQ. IN.
85	1	2 1/2"	INLET TO COILS PORT BOILER.	ASTM A106	885
86	1	2 1/2"	" " " " " " " "	"	"
87	1	2 1/2"	OUTLET FROM COILS PORT " " " "	"	"
88	1	2 1/2"	" " " " " " " "	"	"
89	1	1 1/2"	INLET TO COILS PORT " " " "	"	"
90	1	1 1/2"	" " " " " " " "	"	"
91	1	1 1/2"	OUTLET FROM COILS PORT " " " "	"	"
92	1	1 1/2"	" " " " " " " "	"	"
93	1	1 1/2"	INLET TO COILS PORT " " " "	"	"
94	1	1 1/2"	" " " " " " " "	"	"
95	1	1 1/2"	OUTLET FROM COILS PORT " " " "	"	"
96	1	1 1/2"	" " " " " " " "	"	"

LIST OF FITTINGS

FITTING NO.	NO. OFF.	SIZE	DESCRIPTION	MATERIAL	TEST PRESS. LBS./SQ. IN.	SHEET NO.
178	1	2 1/2" x 1 1/2" x 1 1/2"	BRANCH PIECE - INLET PORT	ASTM A106	570	76
179	1	"	" " " " " " " "	"	"	"
180	1	"	" " " " " " " "	"	"	"
181	1	"	" " " " " " " "	"	"	"
182	1	1 1/2" x 1 1/2" x 1 1/2"	" " " " " " " "	"	"	"
183	1	"	" " " " " " " "	"	"	"
184	1	"	" " " " " " " "	"	"	"
185	1	"	" " " " " " " "	"	"	"



The Wallsend Slipway & Eng. Co. Ltd

Contract N° 919

Arrangement of Re-Superheaters
in Main Boilers.

S. Hunter & Wig. Reins Ship N° 1513

SS "HOPESTAR"

NEWCASTLE ON TYNE.

Report No. 93528

W1014-0138



© 2020

Lloyd's Register

Approved 7/11/35