

HEATING SURFACE.

TUBES	1191 SQ. FEET
FURNACES	96
COMBUSTION CHAMBER SIDES & BACK	150
BACK TUBE PLATE	33
FRONT TUBE PLATE	25
TOTAL	1495
WORKING PRESSURE	120 LBS./D.
TEST PRESSURE	230 LBS./D.
GRATE SURFACE	5'6" FIREBARS 39.875
BOILER TO BURN COAL UNDER FORCED DRAUGHT AND TO BE FITTED WITH A 2 1/2" DOUBLE BORE SAFETY VALVE IMPROVED HIGH LIFT TYPE.	

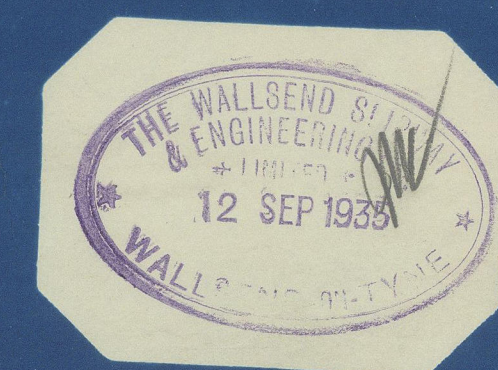
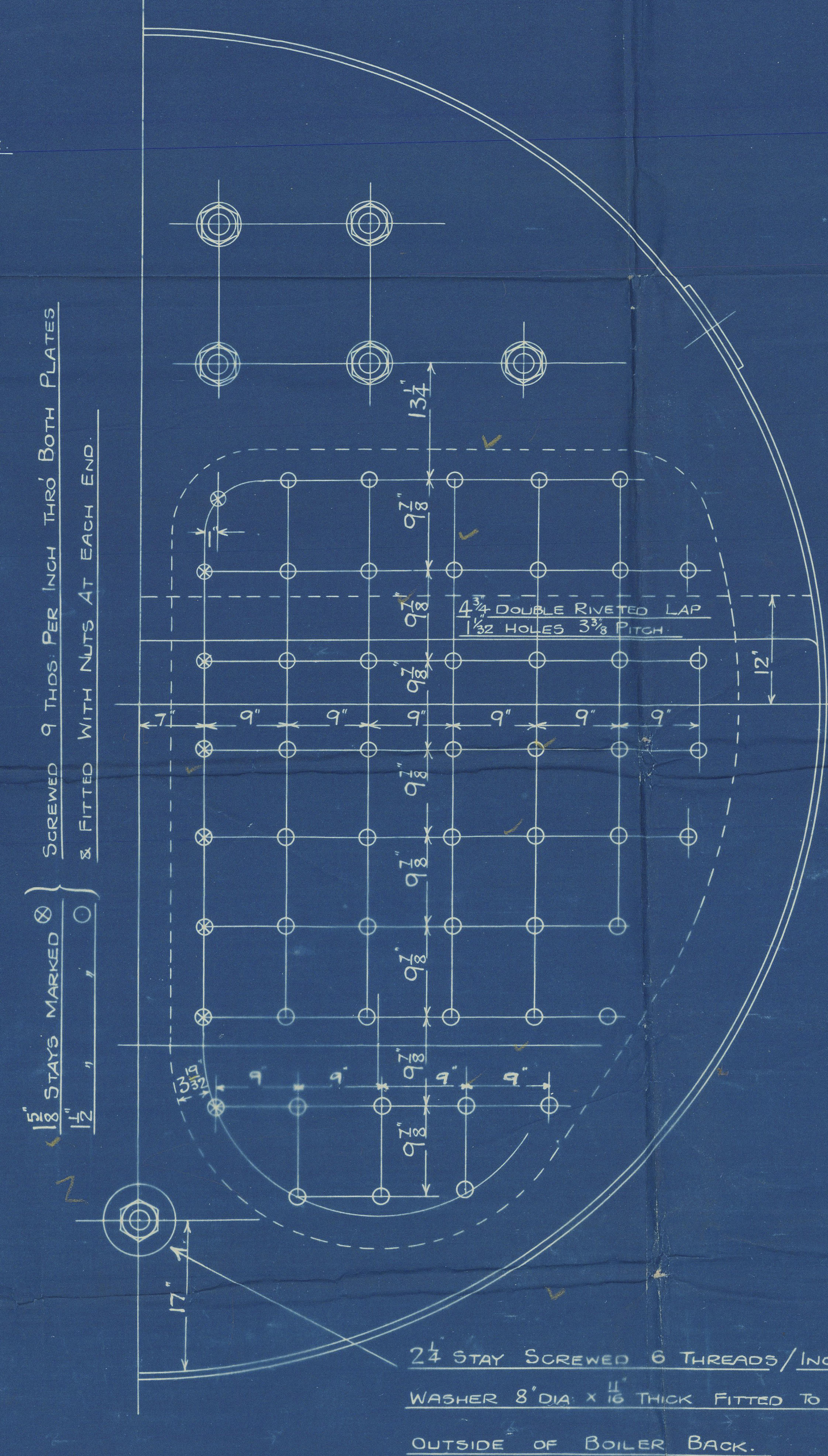
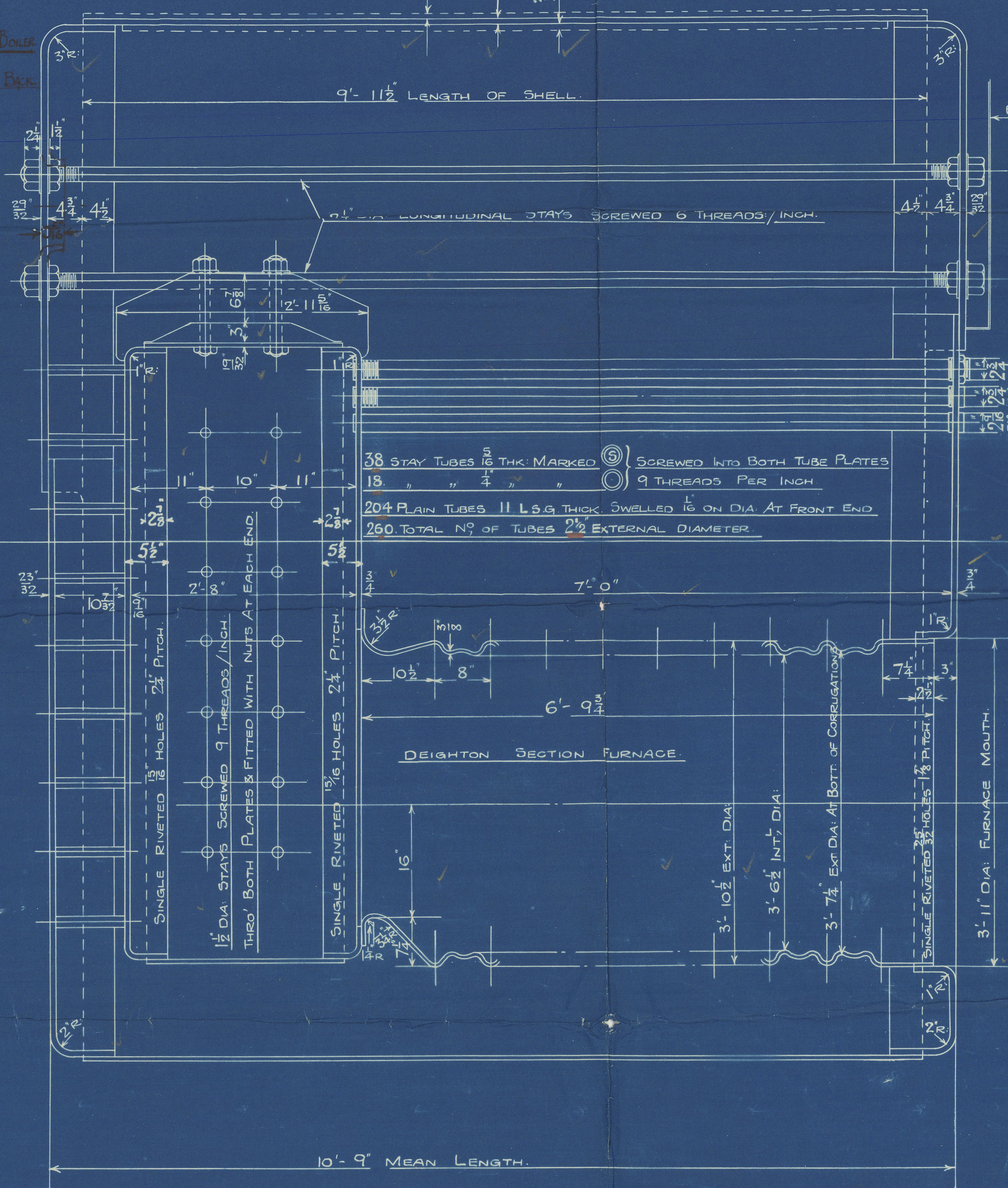
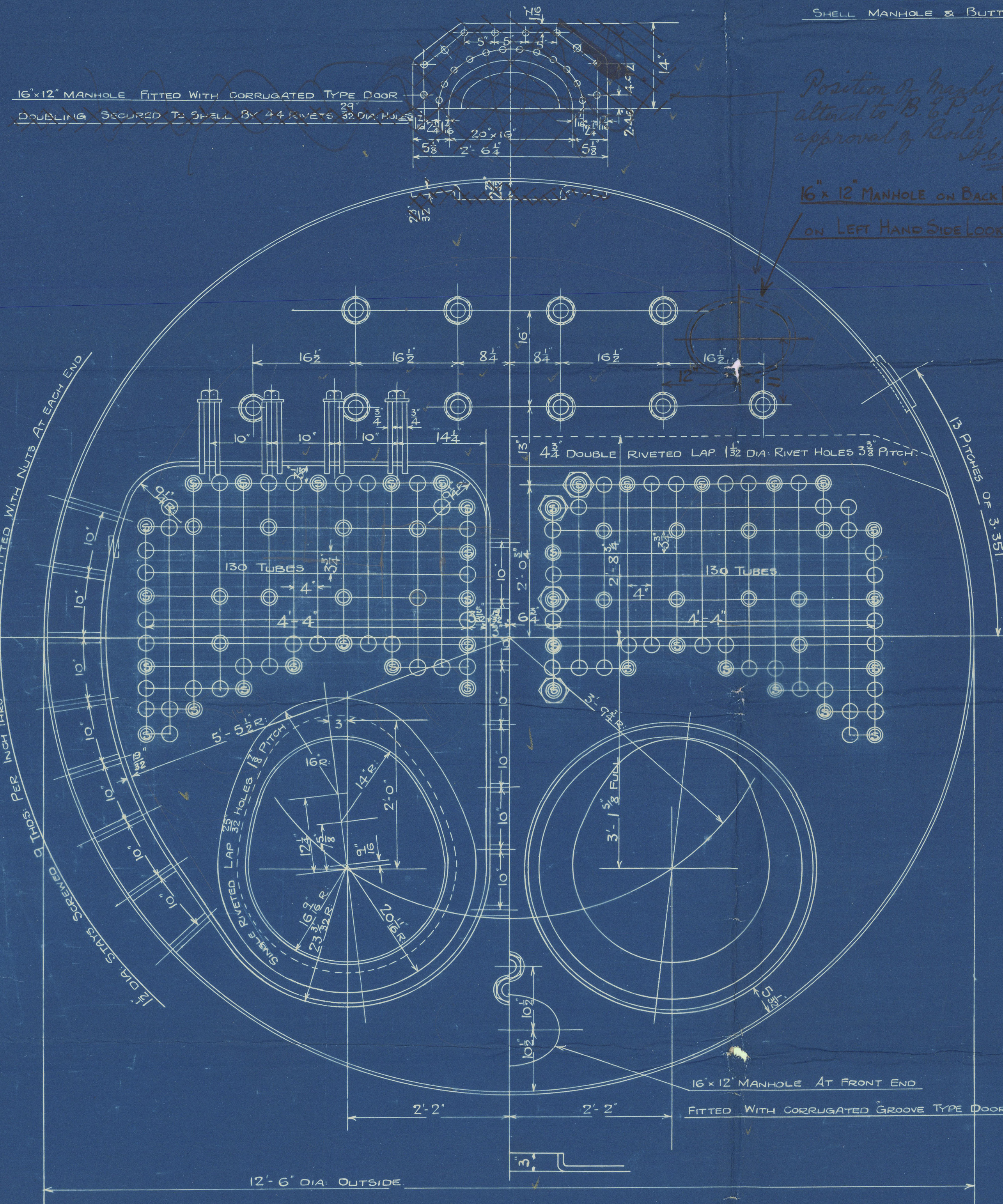
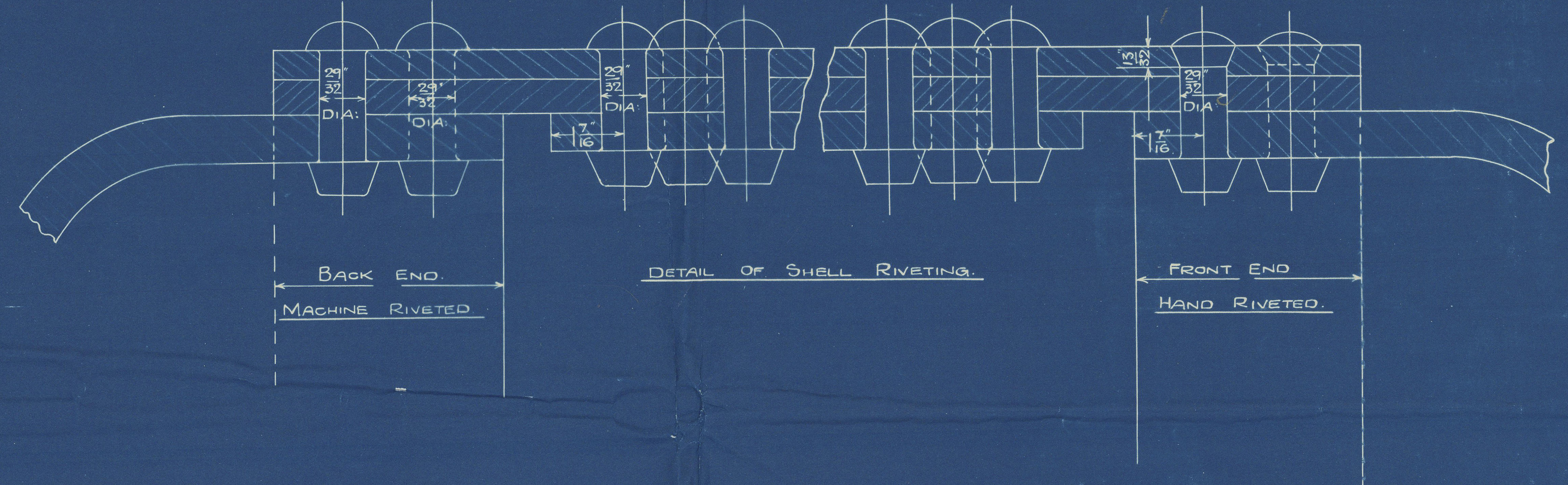
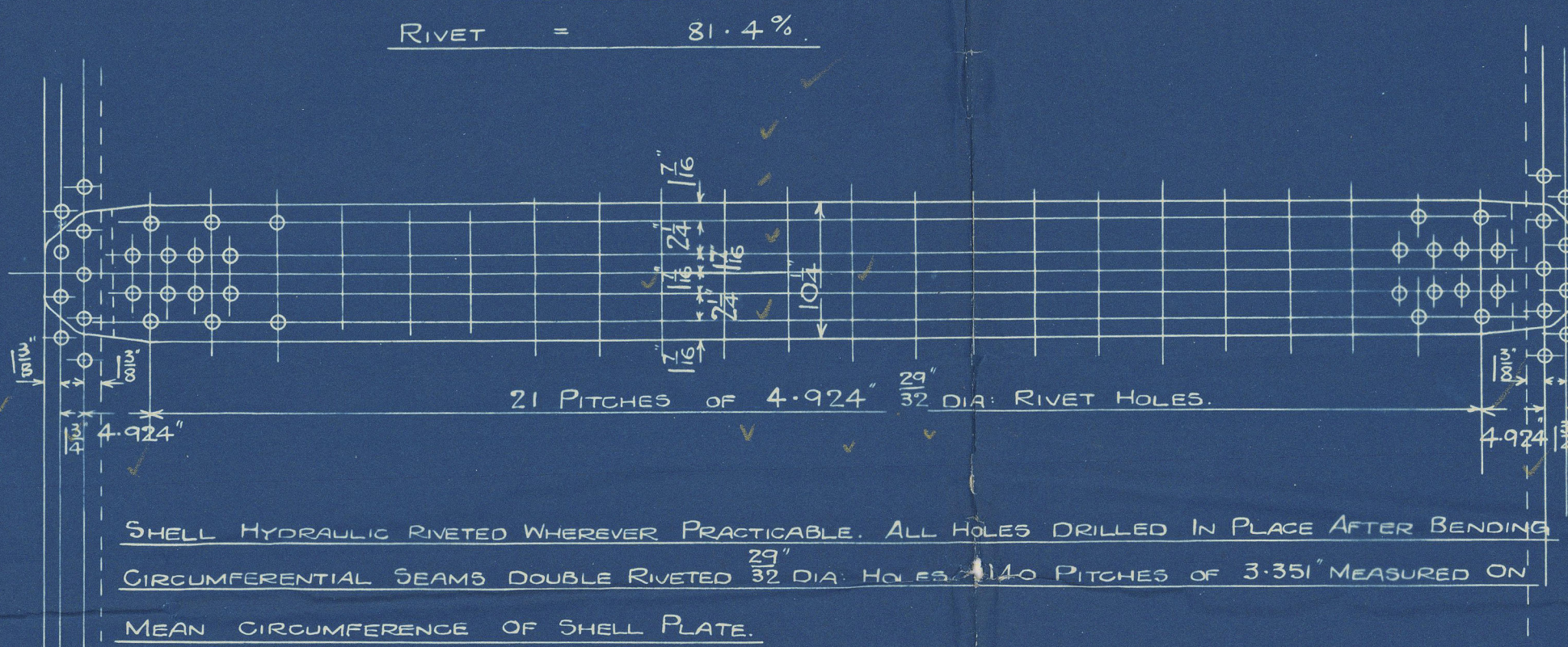
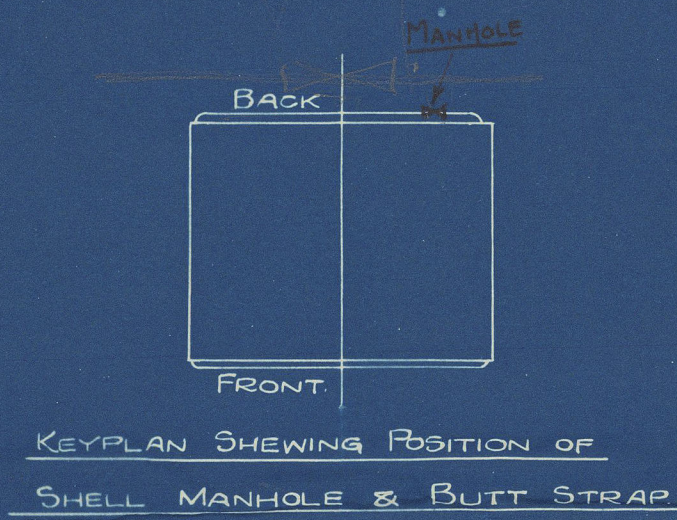
AUXILIARY BOILER. ORDER NO 372.B.

Messrs. SWAN - HUNTER & WIGHAM RICHARDSON SHIP NO 1513. W & E CO. LTD. CONTRACT NO 919.  
TO BE CONSTRUCTED TO PASS LLOYDS SURVEY.  
ONE OFF. SCALE 1" = 1 FOOT.

DESCRIPTION	MATERIAL	TENSILE STRENGTH.
SHELL PLATES & BUTT STRAPS	STEEL	29-33 TONS PER D.
FURNACES WRAPPER & FLANGED PLATES	"	26-30 " " "
GIRDER PLATES	"	29-33 " " "
LONGITUDINAL STAYS	"	28-32 " " "
G.G. SCREWED STAYS & RIVET BARS	"	26-30 " " "
TUBES.	IRON	20 TONS MINIMUM

Approved By LLOYDS SEE LETTER DATED 19/7/1935.

STRENGTH OF JOINT  
PLATE = 81.5 %  
RIVET = 81.4 %



PLAN NO 372



W1014-0134



Nallend Shipway & Eng Co Ltd

Donkey Boiler N<sup>o</sup> 3/2 B

W.P. 120 lbs

Swan Hunter & Wigham Richardson Co

S/N<sup>o</sup> 513

Amended Plan hwe 6/3 7.35

Mark on Boiler

N<sup>o</sup> 657

LLOYD'S TEST

230 lbs.

W.P. 120 lbs.

H.C.F. 18.12.35

---

SS HOPESTAR

NEWCASTLE ON TYNE.

Report No. 93528.

---

RETAIN



© 2020

Lloyd's Register  
Foundation

W1014-0134