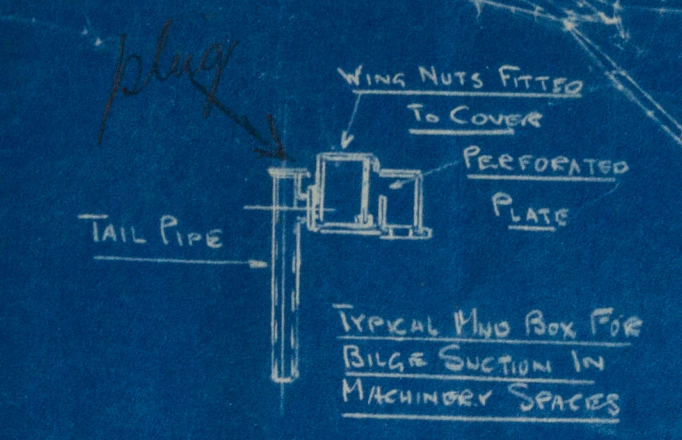


POSITION OF SUCTIONS
TO SURVEYOR'S SATISFACTION

POSITION OF SUCTIONS
TO SURVEYOR'S SATISFACTION
OF SHIP

THIS PLAN IS DIAGRAMMATIC ONLY



✓ RING & BLANK FLANGES ON DIESEL TANK ✓
✓ BILGE & BALLAST SUCTIONS PXS ✓
✓ REQUIREMENTS OF LLOYD'S RULES WILL BE
COMPLIED WITH SO FAR AS APPLICABLE
✓ CONNECTION PROVIDED ON G.S. PUMP DISCHARGE
TO CIRCULATE REFRIGERATOR MACHINE

INDEX TO COLOURING

MAIN CIRCULATING	GREEN
F.W. CONN.	PURPLE
BILGE	YELLOW
BALLAST	RED

PARTICULARS OF PUMPS

DESCRIPTION	NUMBER	DIA. STEAM CYL.	DIA. WATER CYL.	STROKE	CAPACITY PER HOUR	
BALLAST PUMP	1	10"	11"	10"	200 TONS	
GENERAL SERVICE PUMP	1	8"	6"	18"	98 TONS	
BILGE PUMP	1	CENTRIFUGAL			75 TONS	✓
AUX. CONDENSER CIR. PUMP	1	8"	8 1/2"	8"	70 "	
SANITARY PUMP	1	CENTRIFUGAL			27 TONS	✓
MAIN CIRCULATING PUMP	1	CENTRIFUGAL			640 TONS	✓
OIL COOLER/CIR. PUMP	1	ROTARY			40 TONS	✓
FORCED LUB. OIL PUMP	1	ROTARY			20 TONS	✓
STANDBY " " "	1					
MAIN FEED PUMPS	2	8 1/2"	6"	18"	EACH 98 TONS	
HARBOUR FEED PUMP	1	4 1/2"	3"	5"	4.5 TONS	

* PUMPS MARKED THUS ARE CHAIN DRIVEN FROM MAIN TURBINES
WITH STANDBY RECIPROCATING ENGINE.

The remaining requirements of section 84
of the rules 1934-5 to be complied with so
far as they are applicable.

PUMPING PLAN

CONTRACT NO. 919.

SHIP BUILDERS, MESSRS SWAN HUNTER & WIGHAM, RICHARDSON LTD
SHIP NO. 1513.

SKETCH NO. 25
919

