

## EQUIPMENT NUMBER.

L x (B + D) = 410 (57.25 + 58)	= 39,052
FORECASTLE = 24.75 x 7.5 x .75	= 167
SALOON HOUSE = 24.0 x 7.5 x .5	= 90
MIDSHIP HOUSE = 61.5 x 7.5 x .5	= 231
	<b>39,540</b>

## EQUIPMENT

2 BOILER ANCHORS EACH 60 CWTs. STOCKLESS.  
 1 ANCHOR 58 1/2 " "  
 1 STEEL ANCHOR 19 CWTs. EX. STOCK.  
 270 FTH. 2 5/8" STUD CHAIN CABLE. 2 "TAYCO".  
 90 " 5" F.S.W.R. STREAM LINE.  
 120 " 4 3/4" SPECIAL F.S.W.R. TOWLINE.  
 2 @ 90 FTH. 2 3/4" F.S.W.R. HAWSERS. 8 Manila  
 2 @ 90 " 2 1/2" " WARPS. 7 "

Nº 1513.

## MIDSHIP SECTION.

SCALE 1/2" = 1 FOOT.

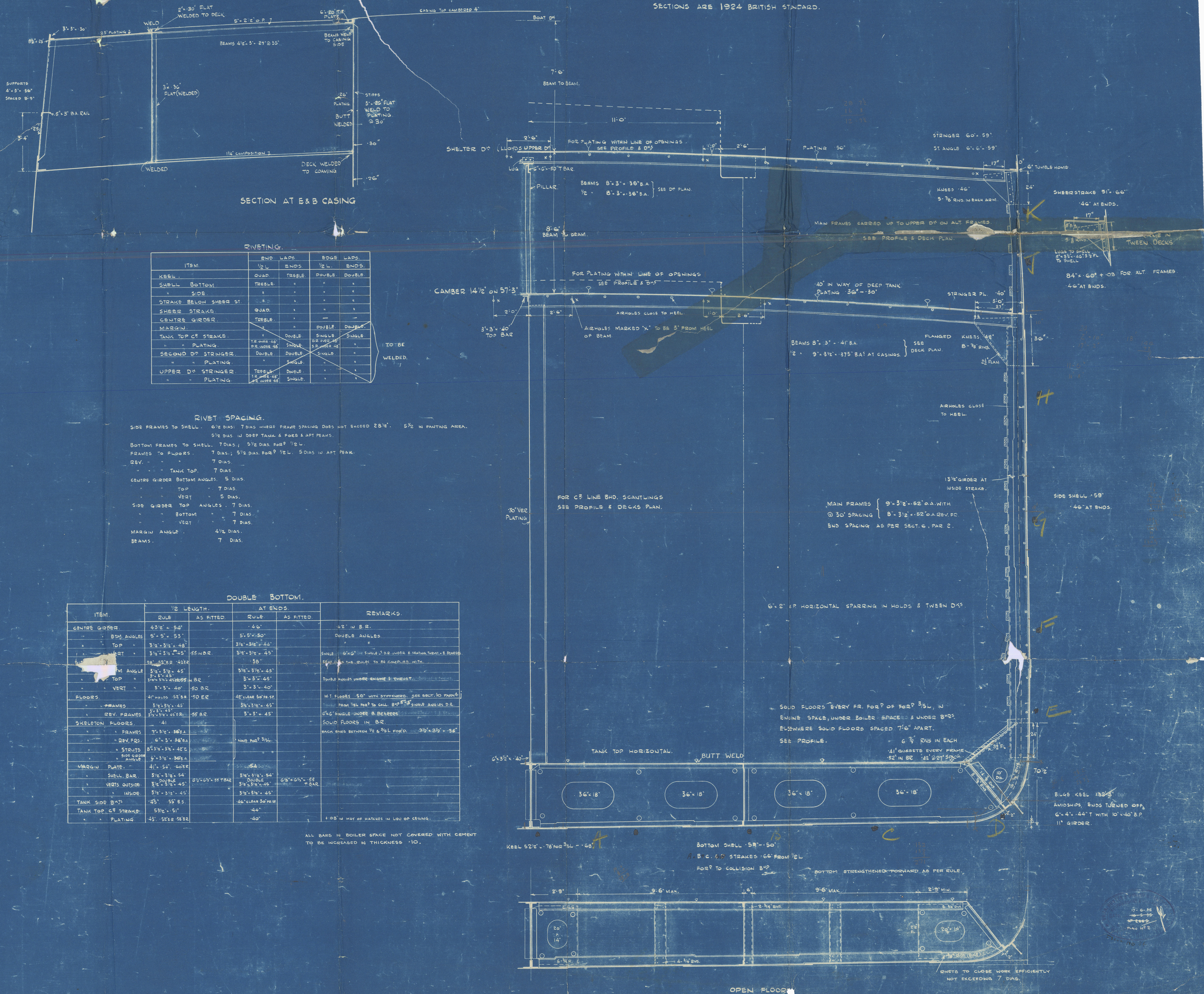
MLD DIMS: 410'-0" B.P. x 57'-3" x 38'-0" T. UPPER DECK.

TO CLASS LLOYDS 100AL. "COMPLETE SUPERSTRUCTURE."

SECTIONS ARE 1924 BRITISH STANDARD.

## LLOYDS NUMERALS:-

L = 410	B = 57.25	D = 23.5 + B = 57.5
L x D = 40 x 37.5		= 15,380
L x (B + D) = 410 (57.25 + 37.5)		= 38,850
L/D = 410/38		= 10.79
L = 23.5 + B = 63		= 25.87





29

S.S. Hopestar

Swan Hunter's No 1513

Midship Section  
as Built

SS 'HOPESTAR'

NEWCASTLE ON TYNE.

Report No. 93528.

W 5569

RETAIN

W 1014-0128



© 2020

Lloyd's Register  
Foundation