

2.3/11/43

S.S. HOPESTAR

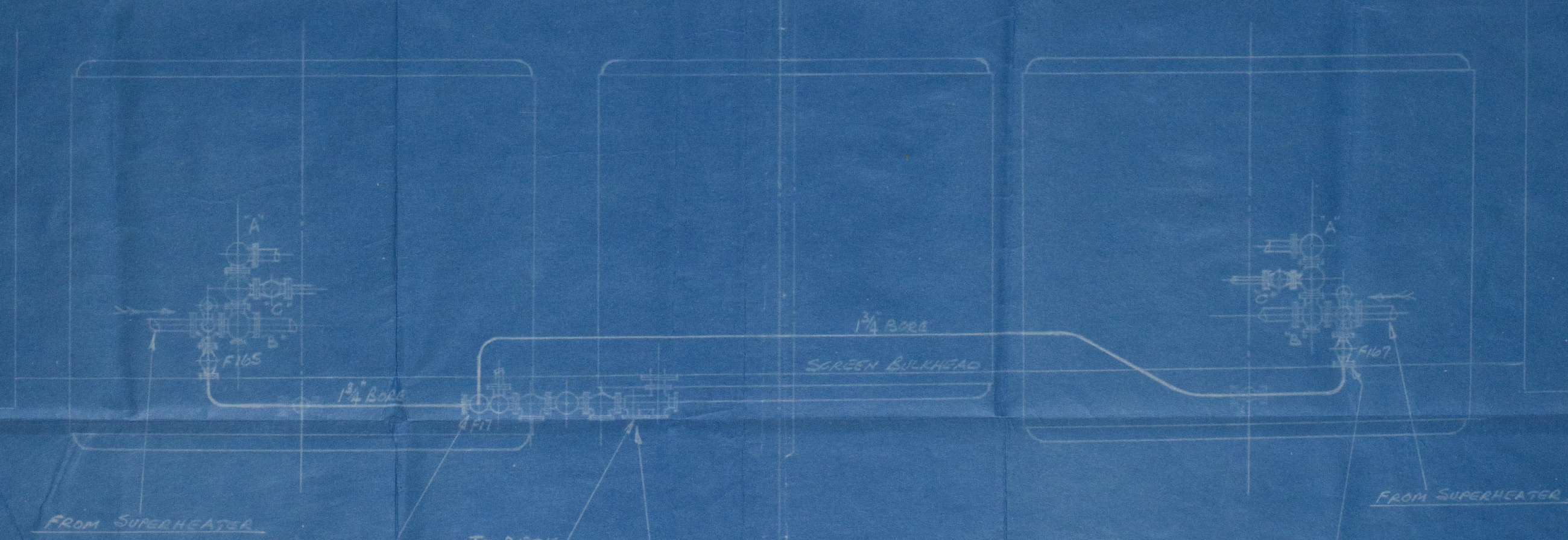
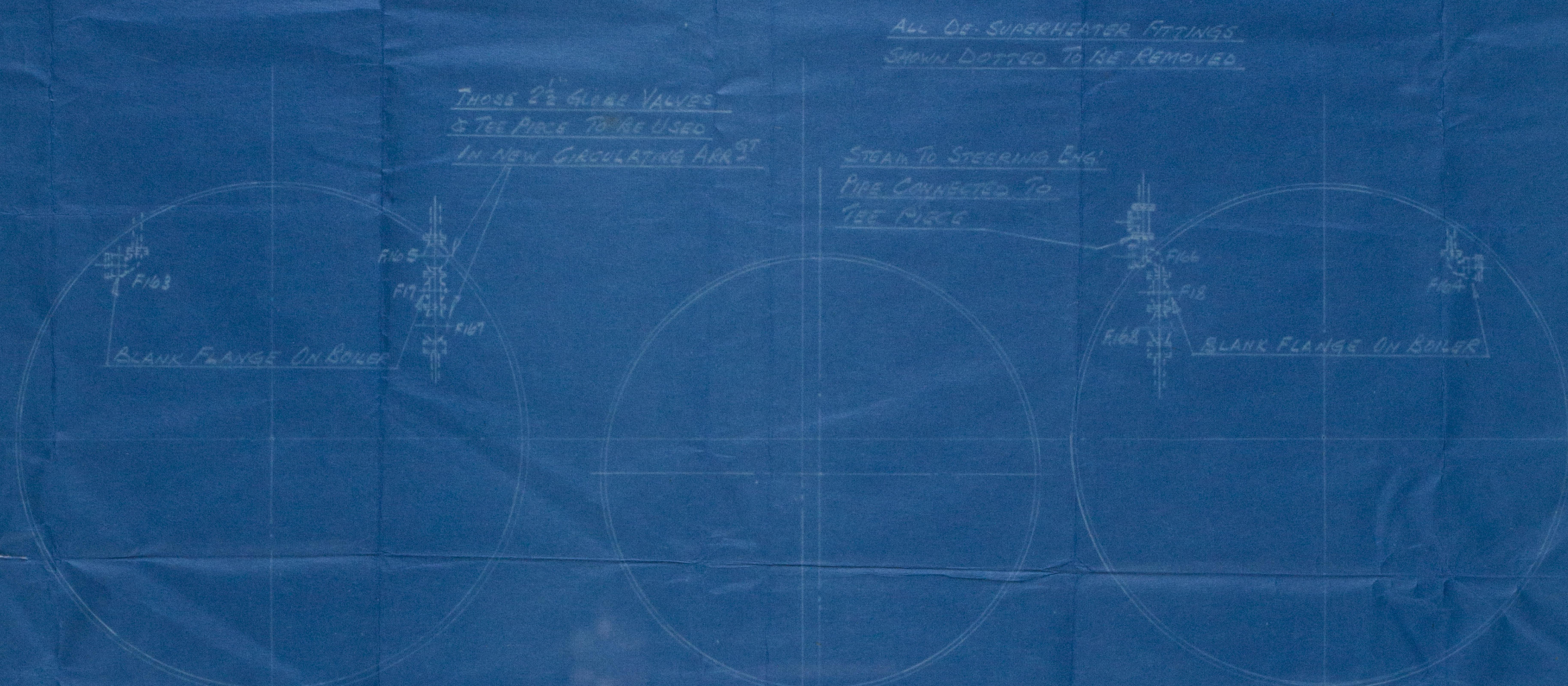
Attention to Zine R119.

No 11/10/43

# THE NORTH EASTERN MARINE ENGINEERING CO. (1938) LTD.

## WALLSEND-ON-TYNE

### ARRANGEMENT OF SUPERHEATER LEAK OFF TO DECK OR AUXILIARY MACHINERY

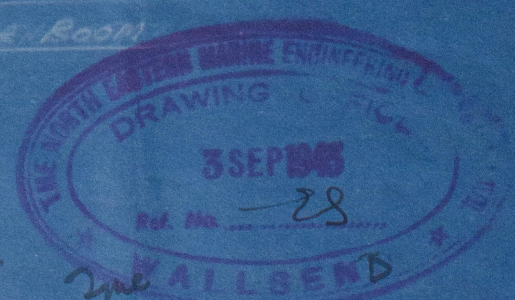


#### LIST OF FITTINGS

MARK	DESCRIPTION	BORE	MATERIAL
F107	TEE PIECE	3/4"	C.S.
F105	GLOBE VALVE	2 1/2"	C.S.
F107	"	3/4"	C.S.

#### INSTRUCTIONS FOR USE IN PORT

WITH BOILER STOP VALVE "A" FULLY OPEN & SUPERHEATER OUTLET VALVE "B" CLOSED, FULLY OPEN VALVE F105 OR F107 & AUXILIARY STOP VALVE "C" SUFFICIENT ONLY, TO PREVENT TEMPERATURE OF STEAM TO DECK & E.R. ARE RISING ABOVE 450°F. VALVE "C" MAY HAVE TO BE REGULATED TO INDUCE FLOW OF STEAM THROUGH F105 OR F107



As with Newcastle on Tyne

SKETCH N° 7507

S.S. HOPESTAR

W1013-0202



8/5 HOPESTAR

attached to NWZ Rpt 9



Nº 101582

11/10/43.

Lloyd's Register  
Foundation

W1013-0202