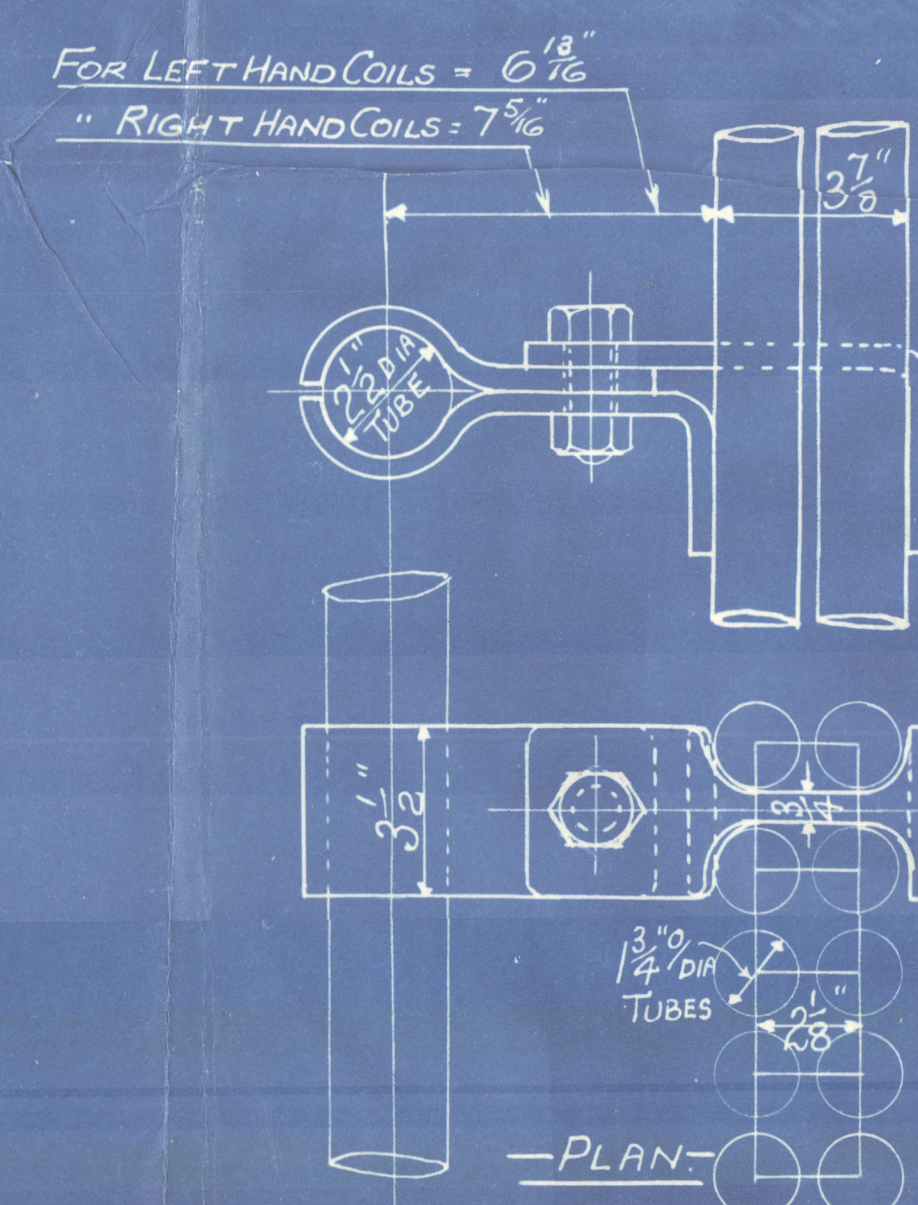


FACH BOILER
DE. SUPERHEATER COILS CAPABLE OF REDUCING
12000 LBS OF STEAM PER HOUR FROM 630° TO APPROX 435° F
WITH A PRESSURE DROP OF 40 LBS.
WORKING PRESSURE = 285 LBS PER SQ" (OUTSIDE COILS)
TO PASS LLOYDS SURVEY.



<u>LIST OF MATERIAL FOR ONE BOILER</u>		
<u>PART</u>	<u>QTY</u>	<u>REMARKS</u>
STEAM PIPES	2	EXISTING (NOT SUPPLIED BY THE SUPERHEATER CO)
CROSS-OVER PIPES	2	" " " " " "
TEE PIPES	2	" " " " " "
SMALL " "	4	" " " " " "
SUPPORTS ON BLK STAY	2	" " " " " "
STEERING CLIPS	4	TO SUIT " " " " " "
DE SUPERHEATER COILS	4	IDENTICAL SUPPLIED BY THE SUPERHEATER CO

THE SUPERHEATER CO LTD
7/oc.101582

TITLE ARRANGEMENT OF
DE-SUPERHEATER COILS.

REF	CKD	DRAWING NOS
M2 13/73		M.N.12950

S. S. "HOPESTAR."

15 © 202