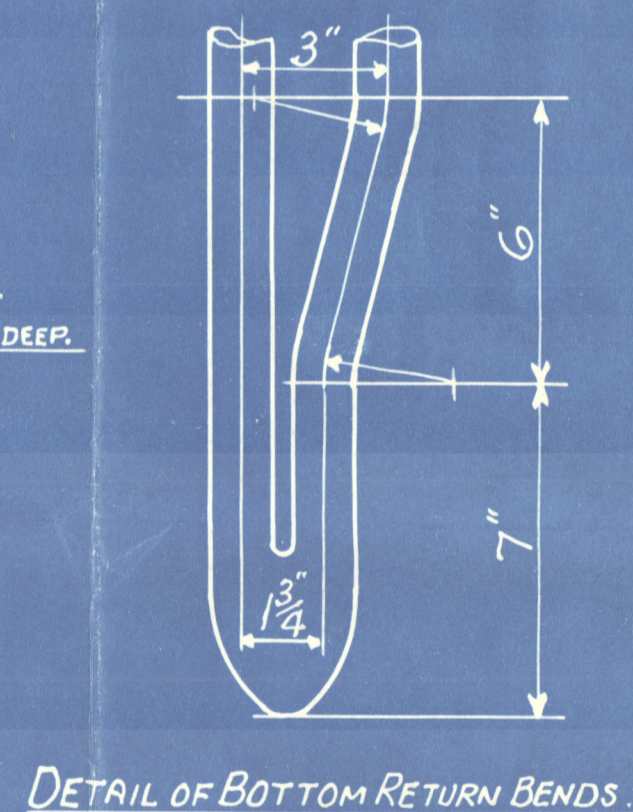
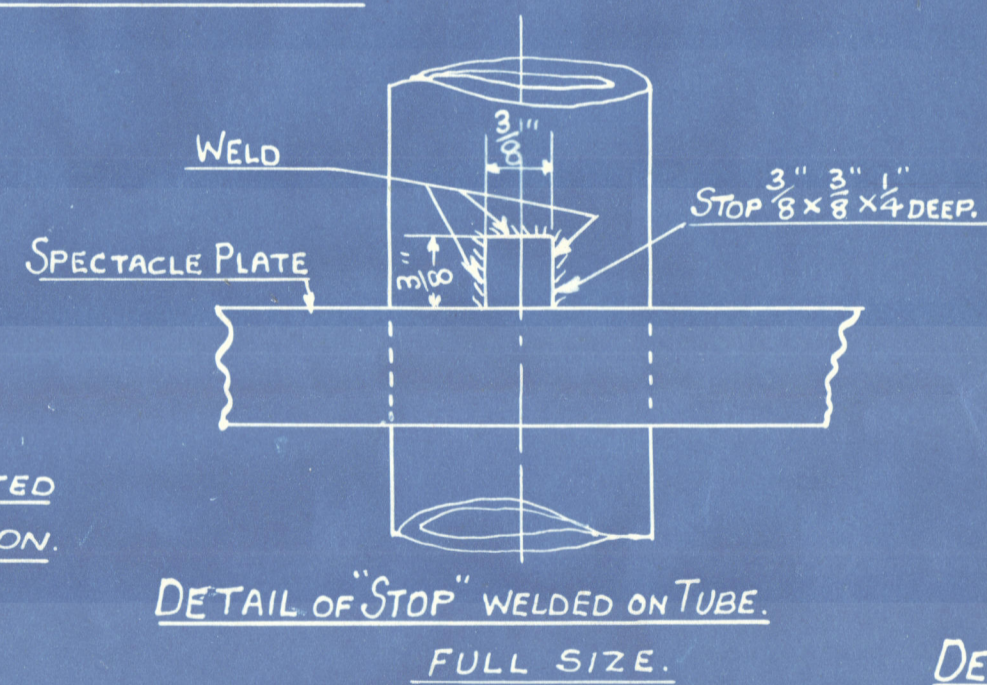
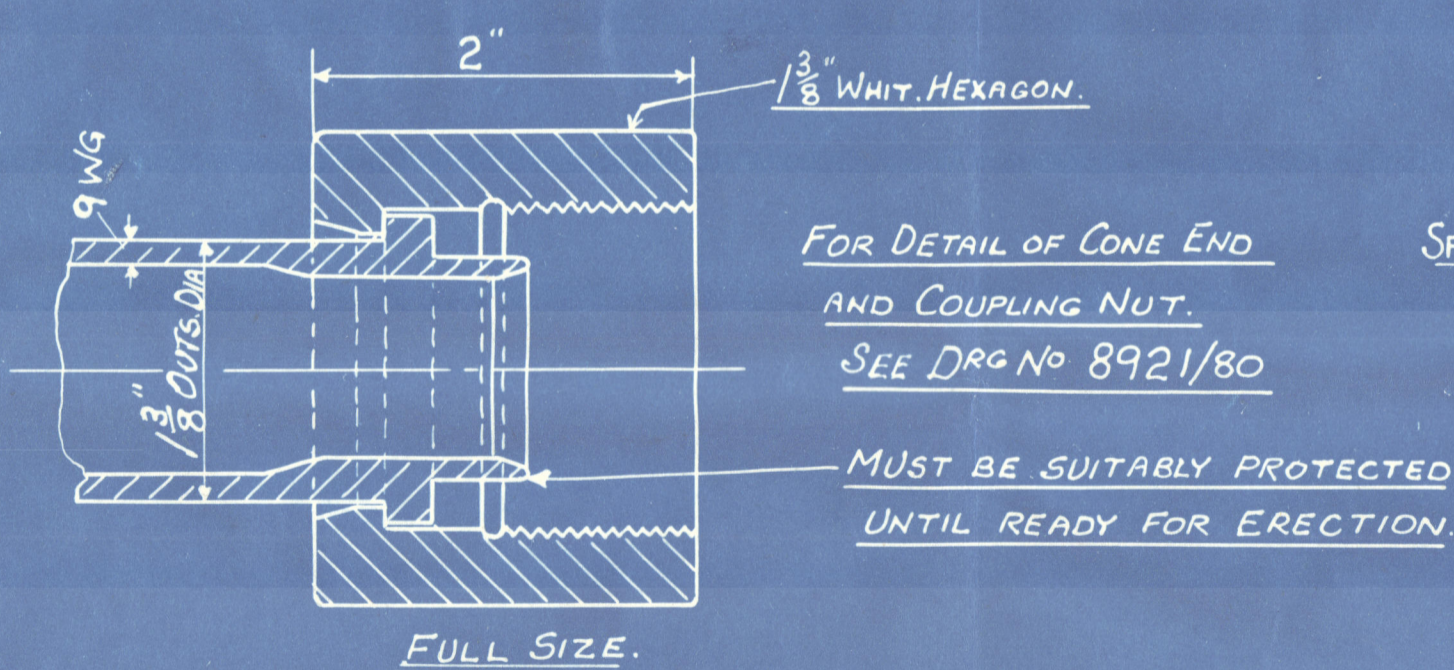


PLAN SHewing POSITION OF PIPES 1 & 11.
- IN RELATION TO BODY OF ELEMENTS.



SOLID DRAWN STEEL PIPES 1 3/8" OUTS
TO PASS LLOYDS SURVEY
WORKING PRESSURE 285 LBS PER SQ. INCH
TEST 855

NOTES:-

- ALL STARRED * DIMENSIONS TO BE WORKED - TO AS ACCURATELY AS POSSIBLE.
- RADIUS OF BENDS & SETS = 2 3/4" TO 6" - EXCEPT WHERE OTHERWISE STATED.
- EVERY ELEMENT MUST HAVE A METAL TAG FIXED ON - CLEARLY STATING IDENTIFICATION LETTER.

SCALE
3" = ONE FOOT

DWN 970 TCD 970
8/10/41 16/5/41

THE SUPERHEATER CO. LTD

11/00.101582

TITLE ELEMENTS

ORDER NOS 14944M 4944M 4944M 4944M
REF CKD 17/5/41
DRAWING NO MB14300

S.S. "HOPESTAR"

LLOYD'S REGISTER
LONDON COPY

W1013-0149