

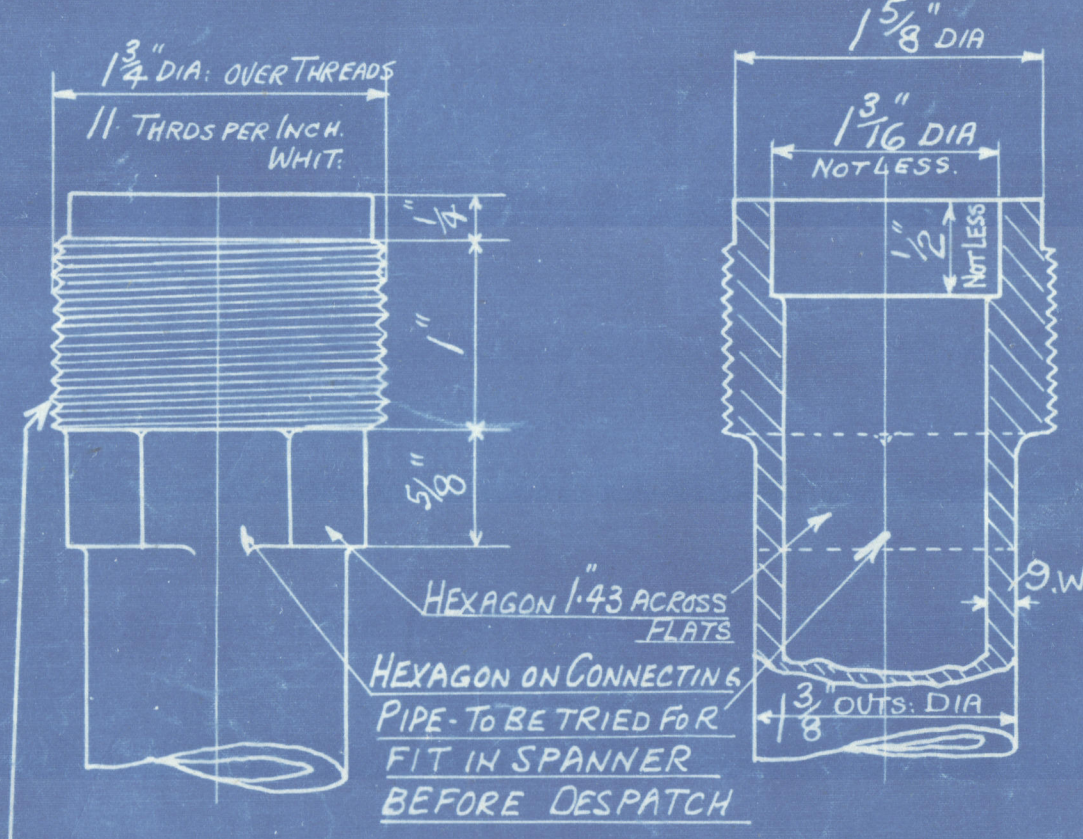
TO BE FITTED BEFORE UPSETTING END OF TUBE

LIST OF MATERIAL FOR ONE BOILER

PIPE NO.	DESCRIPTION	NO OFF PER SET	MATERIAL	LENGTH BEFORE BENDING OR FORGING	APPROX. NET THEORETICAL LENGTH
1	CONNECTING PIPE	2	SDS TUBING	10'-4"	9'-8"
2 & 15	"	1-OFF EACH	"	10'-9"	10'-1"
3 & 16	"	"	"	11'-1"	10'-5"
4 & 17	"	"	"	11'-9"	11'-1"
5 & 18	"	"	"	12'-2"	11'-6"
6 & 19	"	"	"	13'-0"	12'-4"
7 & 20	"	"	"	13'-5"	12'-9"
8	"	2	"	10'-7"	9'-11"
9	"	2	"	10'-10"	10'-2"
10 & 21	"	1-OFF EACH	"	11'-2"	10'-6"
11 & 22	"	"	"	12'-1"	11'-5"
12 & 23	"	"	"	12'-6"	11'-10"
13 & 24	"	"	"	13'-2"	12'-6"
14 & 25	"	"	"	13'-2"	12'-6"
26 & 30	"	"	"	11'-3"	10'-7"
27 & 29	"	"	"	12'-1"	11'-5"
28	"	1	"	12'-8"	12'-0"
31 & 35	"	1-OFF EACH	"	11'-8"	11'-0"
32 & 34	"	"	"	13'-2"	12'-6"
33	"	1	"	13'-5"	12'-9"
	ELEMENT WASHER	38	FORGED STEEL		

ALLOWANCES IN PIPE LENGTHS AS FOLLOWS
FORGING SCREWED END = 5"
" BALL END = 3"
TOTAL = 8"

RADIUS OF BENDS ON ALL PIPES = 2 3/4" TO 4"



TO BE SUITABLY PROTECTED UNTIL READY FOR ERECTION

SOLID DRAWN STEEL PIPES 1 3/8" OUTS DIA. X 9WG. THICK
TO PASS LLOYD'S SURVEY

WORKING PRESSURE 285 LBS PER SQ. INCH

TEST " 855 "

NOTES.

- ALL DIMENSIONS TO BE WORKED AS ACCURATE AS POSSIBLE
- EVERY PIPE MUST HAVE A METAL TAG SECURELY FIXED ON - STATING PIPE NO.

SCALE
1 1/2" = ONE FOOT
DRAWN & TCD
25/1/35



THE SUPERHEATER CO. LTD.
BUSH HOUSE LONDON W.C.2
TITLE CONNECTING PIPES
ORDER NO. REF. END DRAWING NO.
14944 M 9992 M 8921 M 8921 M 8921 M
NORTH EASTERN MARINE ENGRS CO LTD
S.H. 559

S.S. "HOPESTAR"

LONDON COPY Register