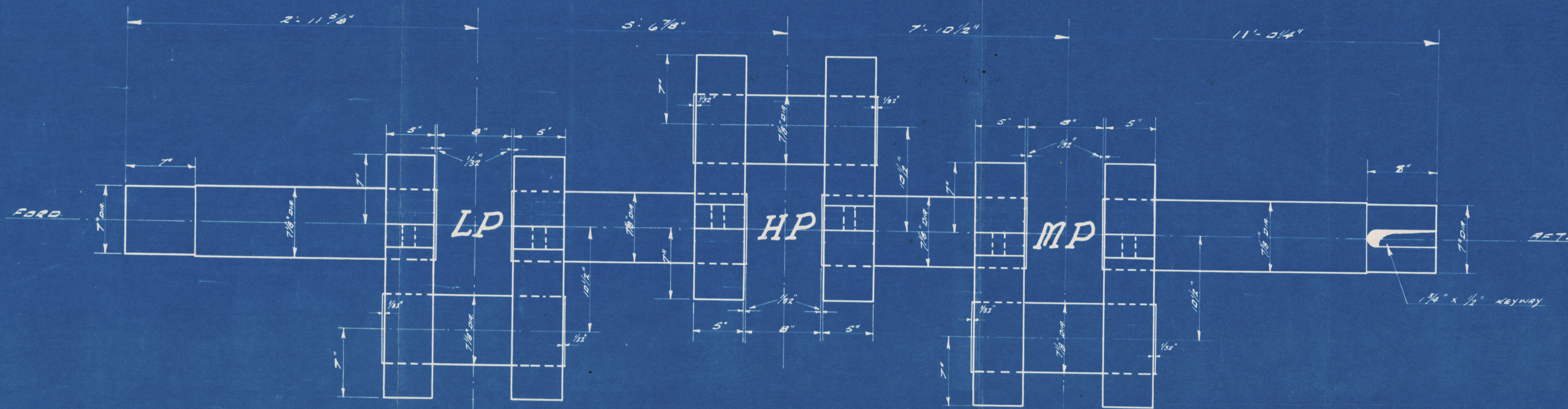
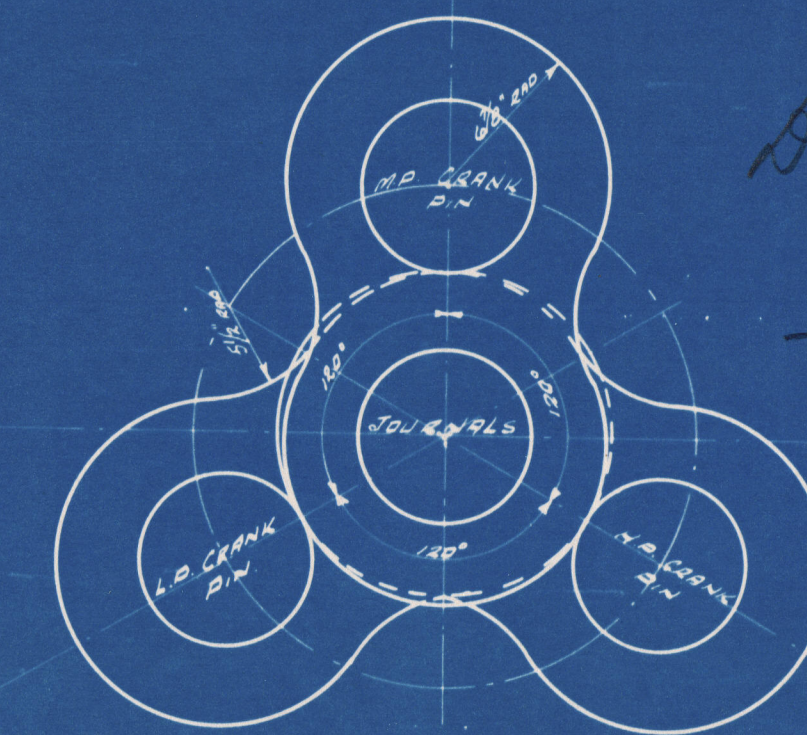


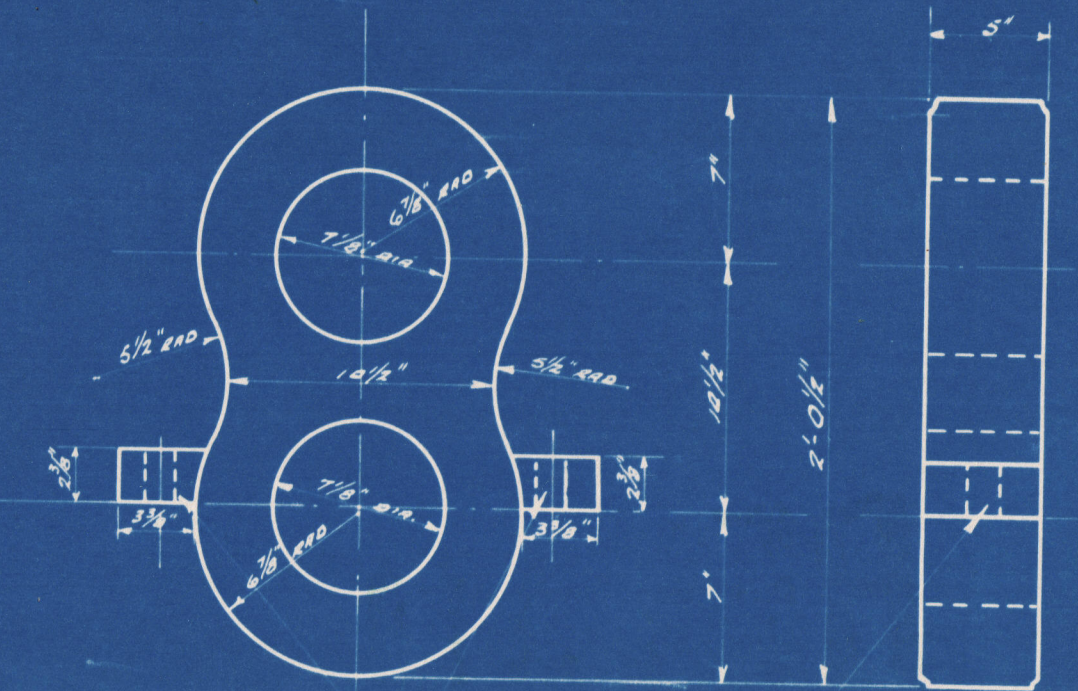
DREDGE FIELDING CONVERSION. CRANK, THRUST & TAIL SHAFTS ETC. SCALE $1\frac{1}{2}" = \text{ONE FOOT}$.



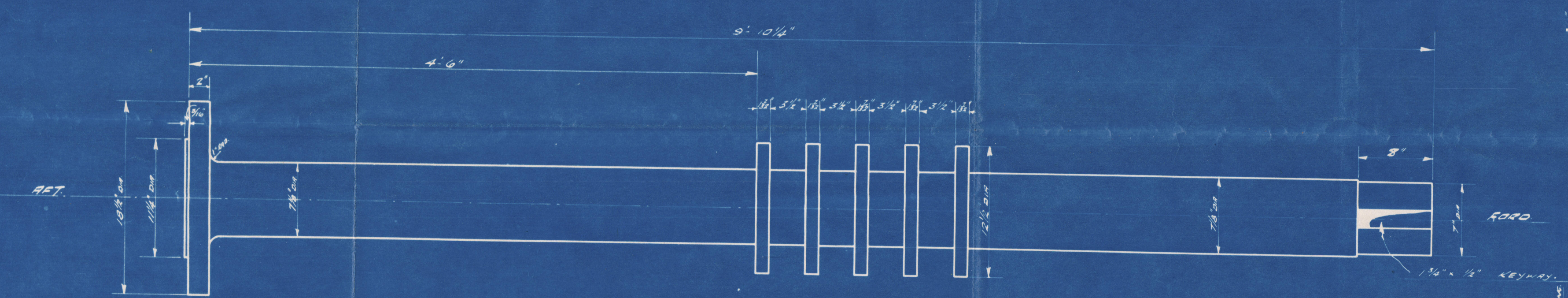
DETAIL OF CRANK SHAFT



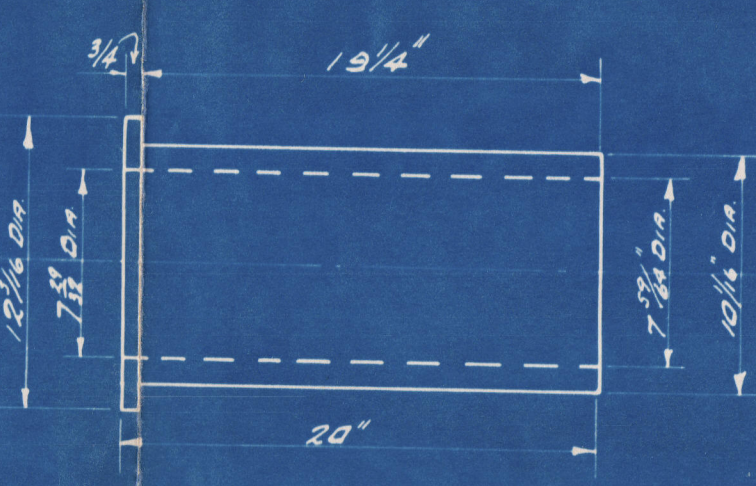
ELEVATION A-A
LOOKING FORWARD



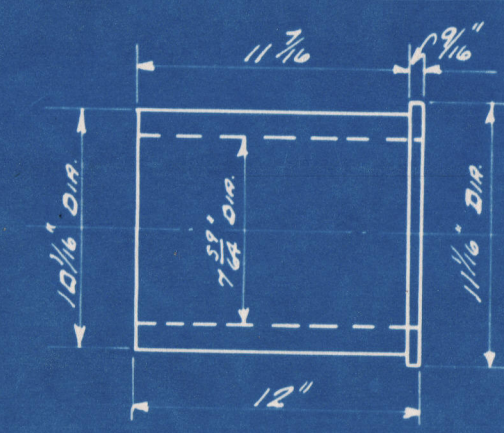
DETAIL OF CRANK WEB



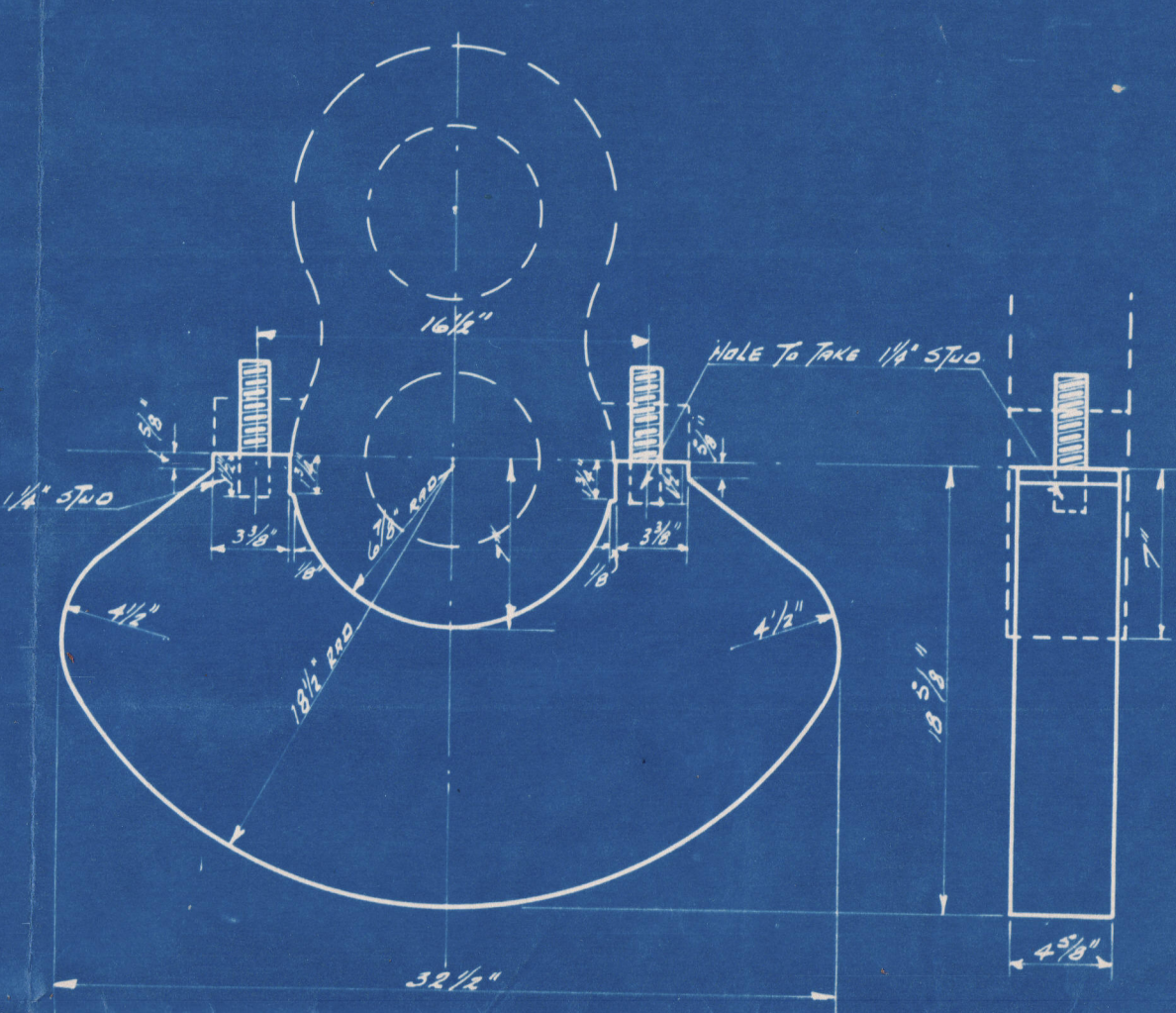
DETAIL OF THRUST SHAFT



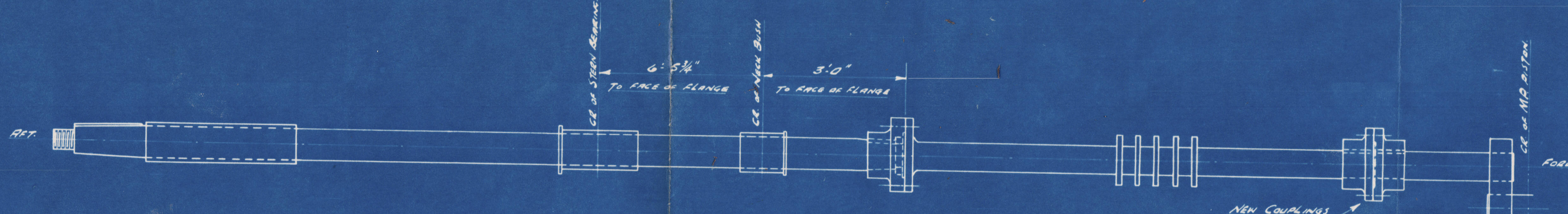
DETAIL OF STERN BEARING



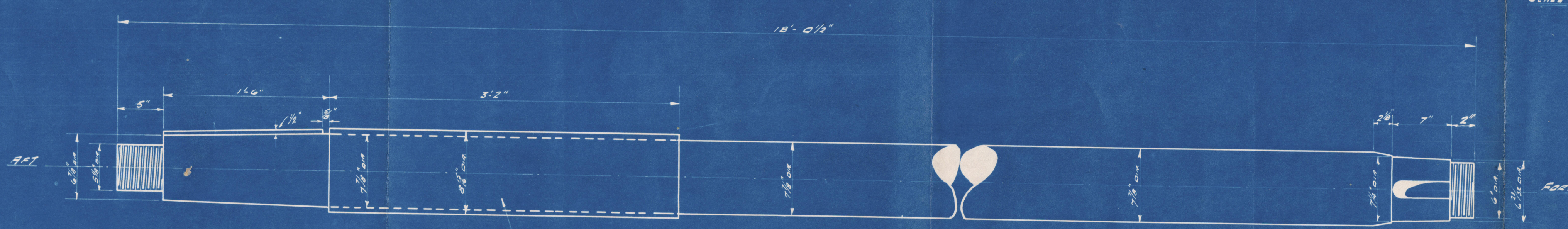
DETAIL OF NECK BUSH



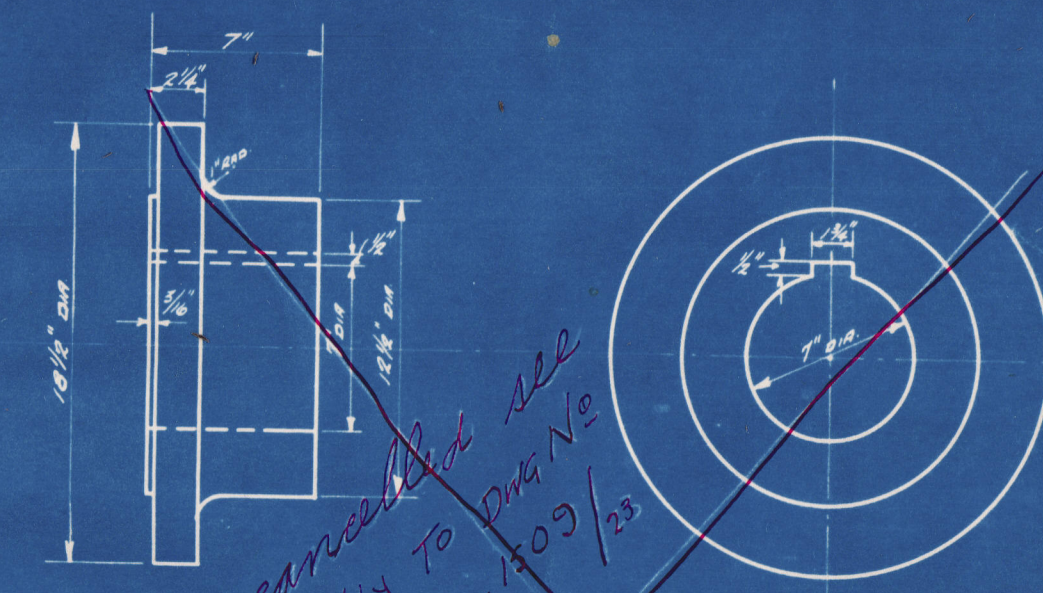
DETAIL OF BALANCE WEIGHT



ARRANGEMENT OF SHAFTING
SCALE 1/4" = 1'-0"



DETAIL OF TAIL SHAFT



DETAIL OF SHAFT COUPLING

DIMENSIONS GIVEN ARE FINISHED SIZES.
STEEL FACING TO ALLIGES REQUIREMENTS.
SCALE 1/4" = ONE FOOT.

APPROVED
MAR 30 1943
LLOYD'S REGISTER OF SHIPPING
NEW YORK

John S. Heck
16/7/43

ST JOHN DEY DOCK & SHIPBUILDING CO LTD BRISTOL	
DREDGE FIELDING CONVERSION	
CRANK, THRUST & TAIL SHAFTS ETC.	
SCALE 1 1/2" = 1'-0"	DATE FEB 4 1943
DRAWN BY L.G.M.	APPROVED BY
CHECKED BY	
DWG. NO. E 1509/23	

L

Basingford
ex
S.S. "RIDING MOUNTAIN PARK."
St. 2544.
(EX. DREDGE "FIELDING").

ARRANGMENT of SHAFING.

RETAIN

RETAIN



© 2020

Lloyd's Register
Foundation

W1011-0381