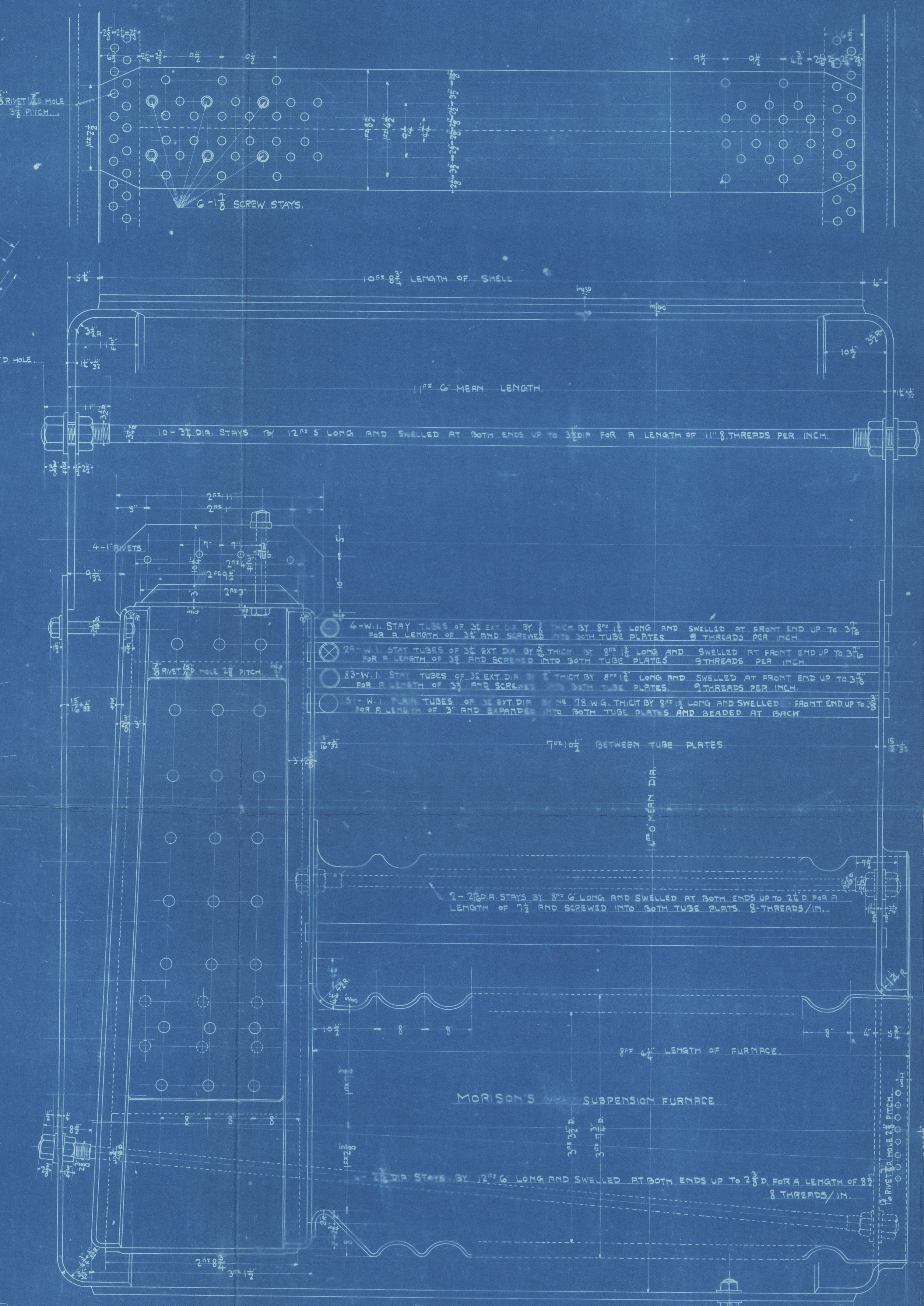


PARTICULARS	
MEAN DIA. OF BOILER	14' 0"
LENGTH	11' 6"
INSIDE DIA. OF FURNACE	3' 3"
LENGTH OF FIRE BARS	5' 6"
G.A.	57.2
H.S. OF TUBES	108.13
FURNACE	152.8
COMB. CHAMBER	23.45
TOTAL H.S.	244.38
M.G.A.	38.4

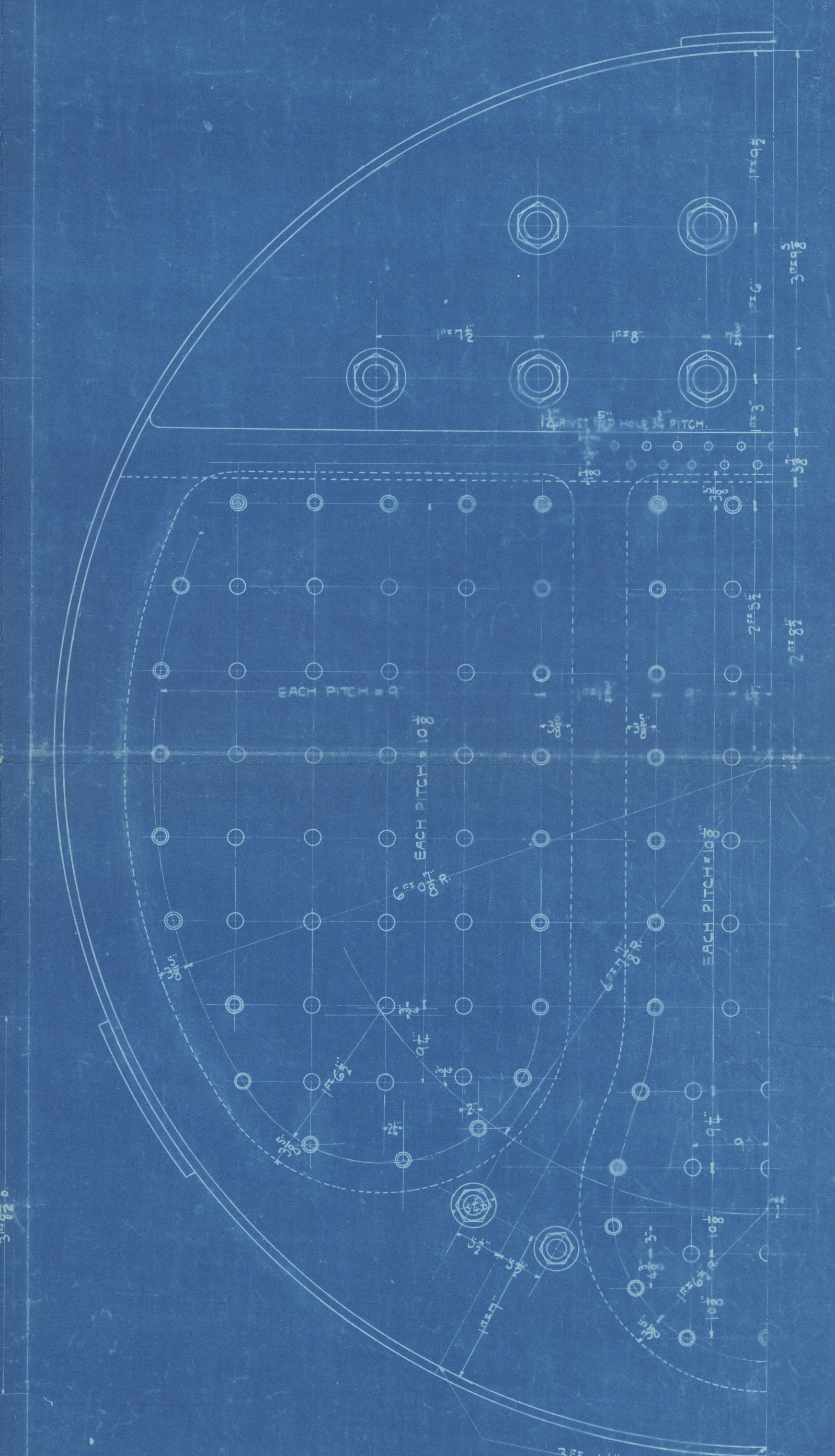


STRENGTH OF SHELL PLATE: 26,176 LBS. TO 31,860 LBS. PER SQ. INCH.
WORKING PRESSURE: 200 LBS. PER SQ. INCH.

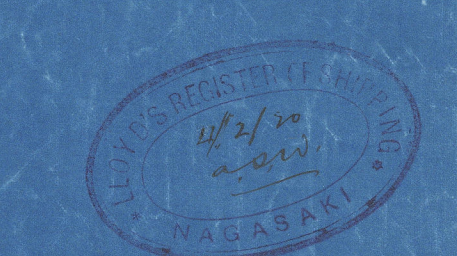
3-OFF FOR ONE SHIP.

LONGITUDINAL SEAM	
DOUBLE BUTT STRAP TREBLE RIVETING	
THICKNESS OF SHELL PLATE	3/8
OUTER BUTT STRAP	1/2
INNER	1/4
DIA. OF RIVET	1 1/2
% OF HOLE	85.2
RIVET	92.3

SCREW STAYS			
NO.	DIA.	NO. FOR ONE	THREADS
1	2 1/2	8	9
2	2 1/2	63	
3	1 1/2	73	
4	1 1/2	33	8.4



NO. 315.
MAIN STEEL BOILER.
SCALE 1 INCH = 1 FOOT.



Main Boiler,

S.S. No. 315,

Mitsubishi Zosen Kaisha,

Nagasaki, Report No. 1275,

"In" Eastern Crown"

RETAI

RETAI



© 2020

Lloyd's Register
Foundation