

# Lloyd's Register of Shipping.

## SURVEYS FOR FREEBOARD.

### (CONDITIONS OF ASSIGNMENT.)

Ship's Name "EMPIRE BETSY" N.N. SOEBIO

Port of Survey HULL.

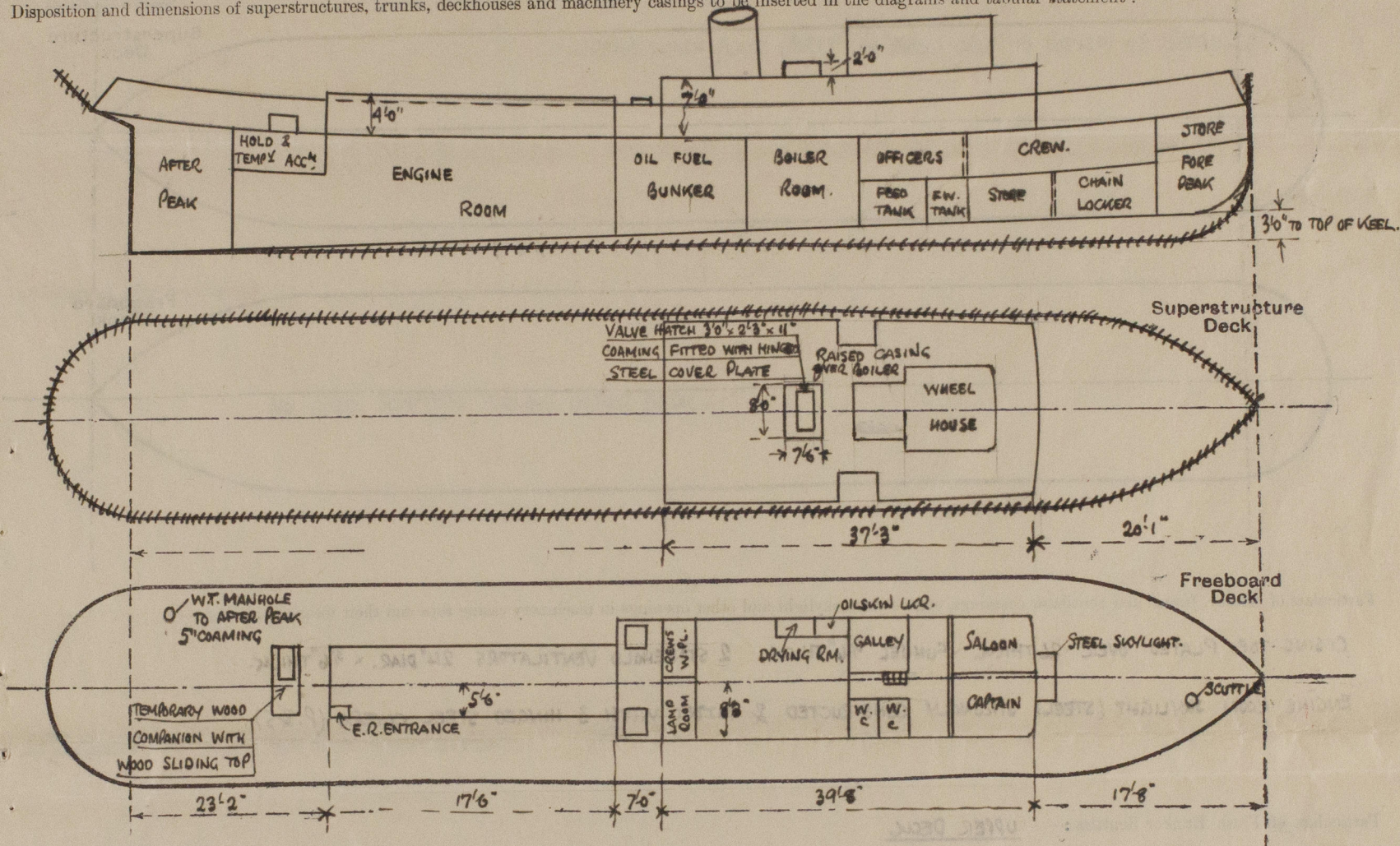
Official Number

Surveyor's Signature

Nationality and Port of Registry BRITISH - HULL.

Date of Survey DURING CONSTRUCTION.

Disposition and dimensions of superstructures, trunks, deckhouses and machinery casings to be inserted in the diagrams and tabular statement:—



Particulars of Superstructures, Trunks, Casings, Deckhouses.

	Coaming	Plating	Stiffeners	Spacing	End Attachments of Stiffeners	Size of Openings	Height of Sills	Height of Casings
Poop Bulkhead ...	✓							
Raised Quarter Deck Bulkhead ...	✓							
Bridge, After Bulkhead ...	✓							
Bridge, Forward Bulkhead ...	✓							
Forecastle Bulkhead ...	✓							
Trunk, Aft ...	✓							
Trunk, Forward ...	✓							
Exposed Machinery Casings on Freeboard or Raised Quarter Deck ...	✓	28	3" x 2 1/2" x 30"	30"	BUTS AT TOP	2'6" x 2'3"	18"	4'0"
Exposed Machinery Casings on Superstructure Decks ...	31	26	6" x 3" x 40"	APPROX 36"	" " "	4'9" x 1'9"	19"	7'0"
Machinery Casings within Superstructures not fitted with Class I Closing Appliances ...	26	✓	3" x 2 1/2" x 30"	30"	" " "	✓	✓	2'0"
Deckhouses on Flush Deck Ships ...	✓	26	3" x 2 1/2" x 30"	30"	BUTS AT TOP	4'9" x 1'9"	4'9" x 1'9"	7'0"

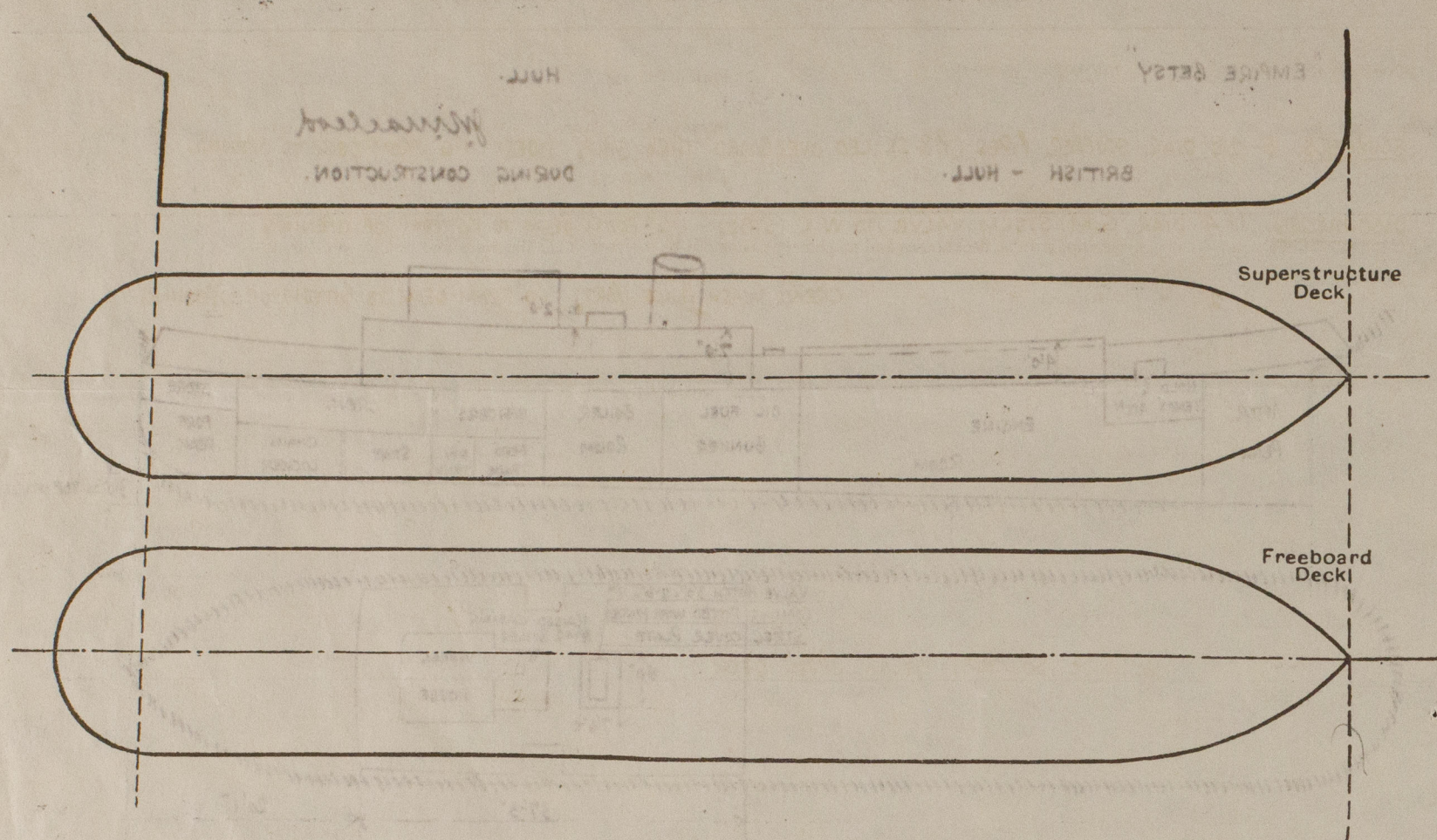
Particulars of Closing Appliances (state if capable of being manipulated from both sides).

Poop Bulkhead ...	✓
Raised Quarter Deck Bulkhead ...	✓
Bridge, After Bulkhead ...	✓
Bridge, Forward Bulkhead ...	✓
Forecastle Bulkhead ...	✓
Exposed Machinery Casings on Freeboard or Raised Quarter Deck ...	TO BOILER ROOM - 2 STEEL DOORS (STD) & 1 ON PORT SIDE 4'9" x 1'9" - 19" SILLS. TO ENGINE ROOM - WOOD DOOR 2'6" x 2'6" x 1 1/8" THICK - 18" SILL - FITTED WITH TEAK SLIDING TOP. DOORS OPERATED FROM BOTH SIDES.
Exposed Machinery Casings on Superstructure Decks ...	✓
Machinery Casings within Superstructures not fitted with Class I Closing Appliances ...	✓
Deckhouses on Flush Deck Ships ...	TO SALOON PASSAGE (P & S) WOOD DOORS 4'7" x 1'8" - 18" SILLS. TO OFFICERS & CREW'S W.C.s (STD) STEEL DOORS 4'9" x 1'9" - 18" SILLS. TO LAMP ROOM (STD) & CREW'S WASH. PLACE (PORT) STEEL DOORS 4'3" x 1'9" - 19" SILLS. TO DRYING ROOM & OILSKIN LOCKER (PORT) STEEL DOORS WITH 21" SILLS. TO GALLEY (PORT) STEEL DOOR WITH 18" SILL. ALL DOORS OPERATED FROM BOTH SIDES.



# PARTICULARS OF PROTECTION TO OPENINGS, ETC.

The following diagrams should be used to indicate the positions of cargo and coaling hatchways, gangway, cargo and coaling ports, ventilators, companionways, etc., which would affect the seaworthiness of the ship:—



Particulars of fiddle, funnel and ventilator coamings, engine room skylight and other openings in machinery casing tops and their means of closing:—

CASING TOP PLATED OVER 26 THICK. FUNNEL 3/16" THICK. 2 STOVEHOLD VENTILATORS 24" DIAR. x 3/16" THICK.

ENGINE ROOM SKYLIGHT (STEEL) STRONGLY CONSTRUCTED & FITTED WITH 3 HINGED STEEL COVERS (P. & S).

Particulars of Flush Bunker Scuttles:— UPPER DECK.

1 SCUTTL (STBD SIDE) WOOLLONS TYPE 20" DIAR. & FITTED WITH CHAIN ATTACHMENT.

Particulars of Companionways:— UPPER DECK.

TO ENGINE ROOM (STBD) AFTER END CASING 2'6" x 2'6" x 18" SILL. WITH HINGED TEAK DOOR & TEAK SLIDING TOP.

EFFICIENT TEMPORARY COMPANION (WOOD) TO TEMPORARY ACCOMMODATION (AFT). 5" ABOVE TOP OF HATCH & DECKED OVER WITH 2 1/2" DOUGLAS FIR.

Particulars of Ventilators in exposed positions on freeboard and superstructure decks:— UPPER DECK.

9" DIAR. FRENCH HEAD VENT. ON SKYLIGHT TOP AT FORE END DECKHOUSE - 17" FROM SKYLIGHT TOP TO OPENING - COAMING 9/16" THICK.

2-5" DIAR. G.N. VENTILATORS (P. & S) TO CREW'S SPACE FORWARD - 16" TO OPENING. CANVAS COVERS SUPPLIED FOR FRENCH HEAD.

1-5" " " " ( " ) TO ENGINEER'S & OFFICER'S CASINS - 16" TO OPENING. VENTILATORS. WOOD PLUGS SUPPLIED FOR

7" DIAR. FRENCH HEAD VENTILATOR TO ENGINE ROOM (STD) - 36" TO OPENING. G.N. VENTILATORS.

7" " " " " " (AFT END) - 39" " " PROTECTED BY E.R. CASING & EFFICIENTLY STAYED TO CASING.

BRIDGE DECK - 4-5" DIAR. G.N. VENTILATORS TO ACCOMMODATION SPACES. 16" TO OPENING.

Particulars of Air Pipes in exposed positions on freeboard, raised quarter, or superstructure decks:—

UPPER DECK. TO FORE PEAK TANK. 2" DIAR. 3'2" FROM DECK TO OPENING. PROTECTED BY BULWARK.

TO STORE ROOM (P. & S). 2" DIAR. 2'6" FROM DECK TO OPENING. AIR PIPES TO TANKS SUPPLIED WITH

TO FRESH WATER TANK (P. & S). 2" DIAR. AIR & FILLING PIPE - 2'3" FROM DECK TO OPENING. WOOD PLUGS - TO OIL FUEL BUNKERS

TO BOILER FEED TANK (P. & S). 2" " " " - 2'2" " " " WITH GAUZE WIRE COVERS (2).

TO AFTER PEAK TANK (P. & S) 2" DIAR. AIR PIPE. 2'6" FROM DECK TO OPENING.

TO OIL FUEL BUNKERS ( " ) 3" " " 2'6" FROM TOP OF TRUNK TO OPENING. PROTECTED BY DECKHOUSE.

Particulars of Gangway Cargo and Coaling Ports:—

NONE.

Particulars of Scuppers and Sanitary Discharge Pipes:—

SCUPPERS. 5-2 1/2" DIAR SCUPPER PIPES (P. & S). LED OVERBOARD THRO' SHIP'S SIDES. 1'6" FROM DECK TO OPENING.

DISCHARGES. 1-4" DIAR. G.M. STORM VALVE TO W.C (STBD) - 1'6" FROM DECK TO BOTTOM OF OPENING.

1-2" " " " " CREW'S WASH PLACE (PORT). 1'6" FROM DECK TO BOTTOM OF OPENING.

Particulars of Side Scuttles:—

NO SIDE SCUTTLES BELOW UPPER DECK.

Vertical distance of Sill of lowest Side Scuttle above top of keel

Particulars of Guard Rails:—

STEEL BULWARK ALL FORE & AFT.

Particulars of Gangways, Lifelines, etc.:—

NONE.

## Particulars of Freeing Arrangements.

	Length of Bulwark	Height of Bulwark	Size of Freeing Ports	Number each side	Area each side	Rule area each side
After Well ... ..	105'6"	3'0"	2'1/2" x 1'2 1/2"	4		
Forward Well ... ..						

State position of each freeing port ... .. { After Well:— FROM AP. 20'0" - 32'0" - 47'0" - 68'0".

(F. and A. position and height above deck edge) { Forward Well:— 7'4" ABOVE DECK EDGE.

State whether the freeing ports are fitted with shutters, bars, or rails, and give particulars of such:— 2 BARS FITTED.

Additional area where sheer is less than standard.



PARTICULARS OF PROTECTION TO OPENINGS, ETC.

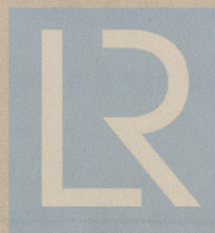
		HATCHWAYS ON FREEBOARD AND SUPERSTRUCTURE DECKS.									
		UPPER DECK		TRUNK TOP.							
Description of Hatchway ...		HATCHWAY TO HOLD AFT		O.T. HATCHWAY TO OIL BUNKER (P.S.).							
Dimensions of Hatchway ...		5'0" x 3'0"		2 - 2'6" x 2'6"							
COAMINGS	Height above Deck ...	18"		12"							
	Thickness ...	3/8"		3/8"							
	Sides ...	3/8"		3/8"							
	Ends ...	3/8"		3/8"							
HATCH BEAMS	Stiffeners ...	NONE		NONE							
	Brackets, Stays ...	NONE		NONE							
	Number ...	NONE		NONE							
	Spacing ...	NONE		NONE							
FORE AND AFTERS	Unsupported Lengths ...	NONE		NONE							
	Scantling* and Sketch ...	NONE		NONE							
	Bearing Surface ...	NONE		NONE							
	Number ...	NONE		NONE							
HATCH COVERS	Material ...	DOUGLAS FIR		HINGED STEEL PLATE - 3/8" THK.							
	Thickness ...	2 1/2"		SECURED BY 7/8" DIAR.							
	How fitted ...	CLOSE LINED		EYES/BOLTS WITH G.M.							
	Bearing Surface ...	3"		TOGGLES.							
Spacing of Cleats ...		24"		✓							
Number of Tarpaulins ...		2		✓							

\*Are wood fore and afters steel shod at all bearing surfaces? *none.*  
 Are battens and wedges efficient and in good condition? *yes.*  
 Are tarpaulins in good condition and in accordance with rule requirements? *yes.*  
 Are lashings provided in accordance with rule requirements? *yes.*

Particulars of any special features:—

Endorsement at first survey and at surveys for renewal of Certificate:—

The fittings and appliances are in accordance with the particulars shown on this form (or as now modified) and are in good condition.



© 2019

Lloyd's Register Foundation