

15/12/17

LONGITUDINAL SECTION OF TWIN SCREW STEAMER.

'G' TYPE

DIMENSIONS : 450'0" x 58'0" 40'0" MLD

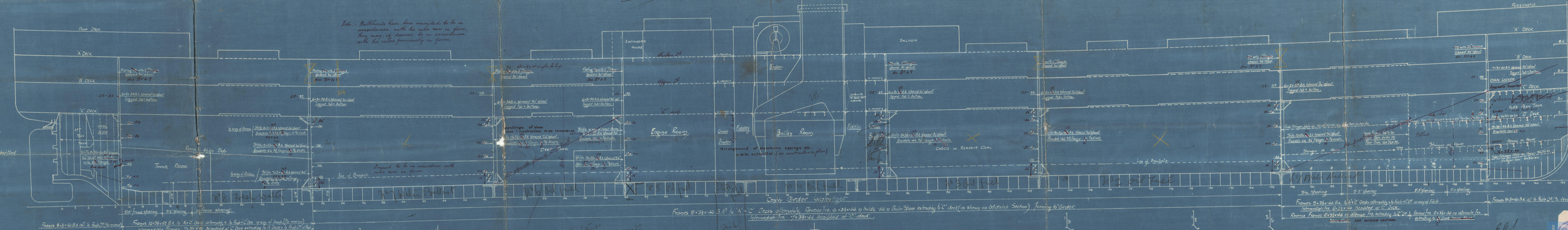
SCALE : 1/8" = ONE FT.

Approved by
B.C.
19-9-17

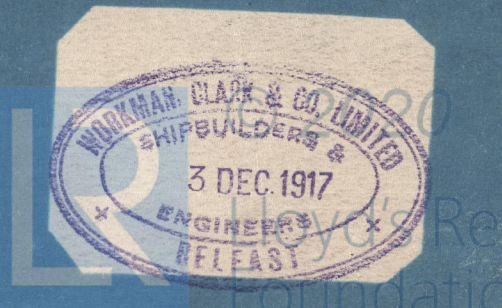
Approved by
S.H.K.
19-9-17

Converted to burning
oil fuel 12.38
For New pumping arrangements
See plan with Ant Rpt 22431 12/38

Note: Bulkheads have been amended to be in accordance with the rules now in force, they may, if desired, be in accordance with the rules previously in force.



see painting arrangement



How. n. 540

War Scars.

Bel. 8030.

The Clan Farguhar

RETAIN



© 2020

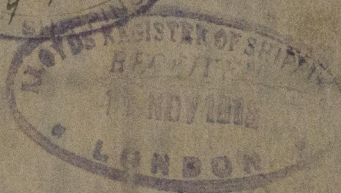
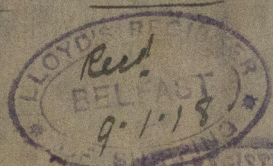
Lloyd's Register
Foundation

Standard Vessels "G" Type


Profile

Harland & Wolffs. Nos 540-1-2.

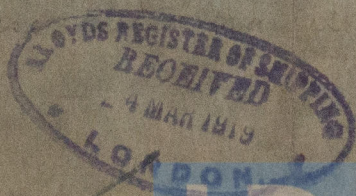
Workman Clark & Co. Nos 438-9.



M/M Box
1007

"CLAN FARQUHAR" 

540	War Icarus	Bel- 8030
438	Royal Star	Bel- 8077
542	Bardic	Bel- 8088



© 2020

Lloyd's Register
Foundation

W1007-0096