

SHELL MANHOLE SADDLE
M^cNEIL'S RECESSED DOOR

BOILER No 1127.
FOR HENRY ROBB L^r. S.S. 113.
TO LLOYDS SURVEY.

HEATING SURFACE 2176 Sq. Ft.

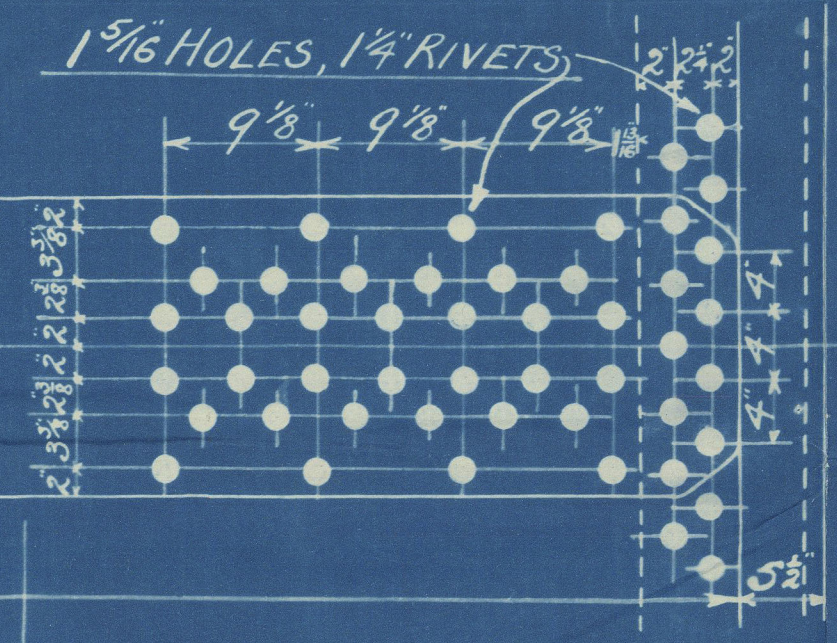
GRATE AREA 63 "

FIRE GRATE 6'-0" LONG
BARS IN TWO LENGTHS.

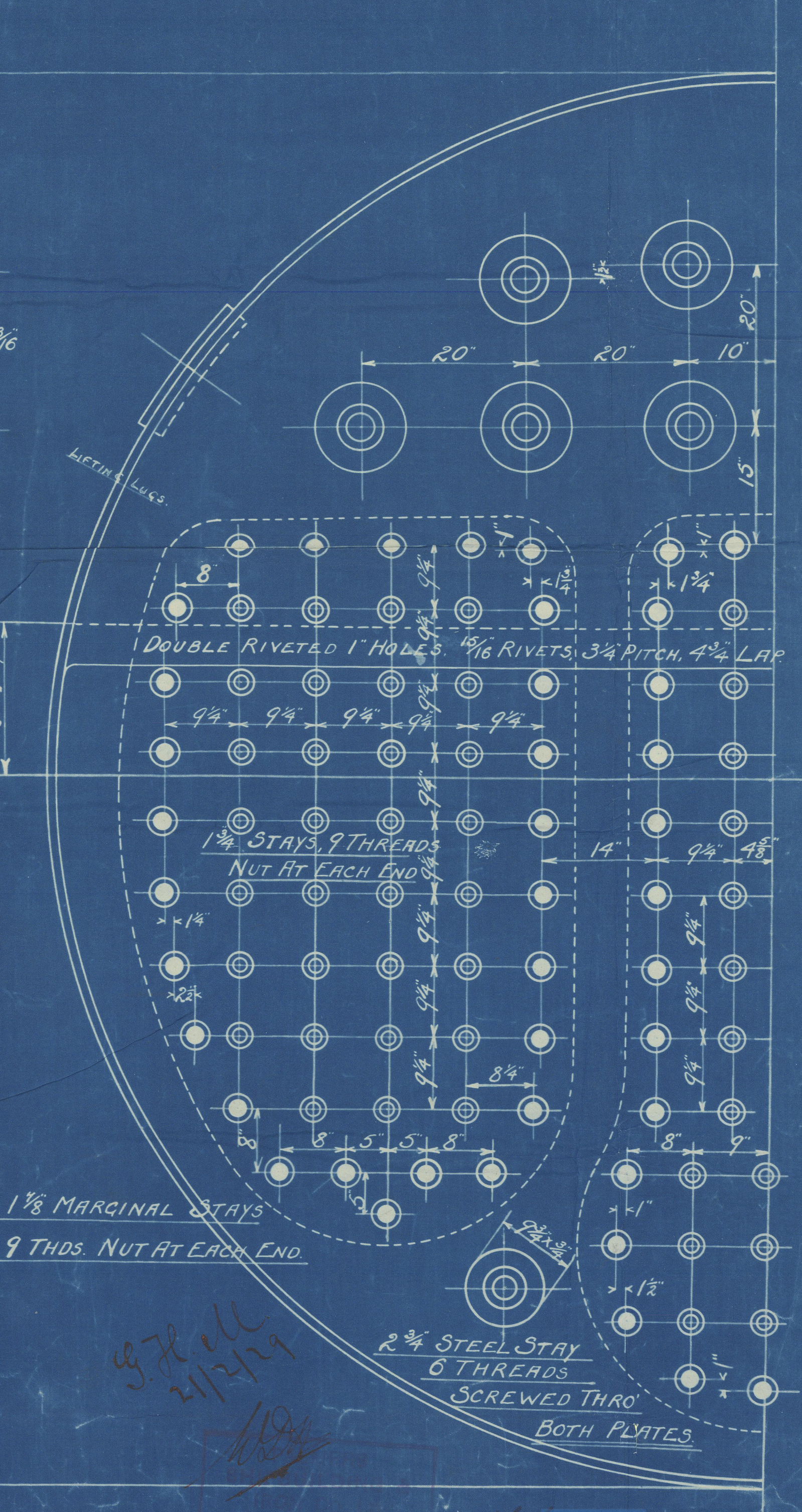
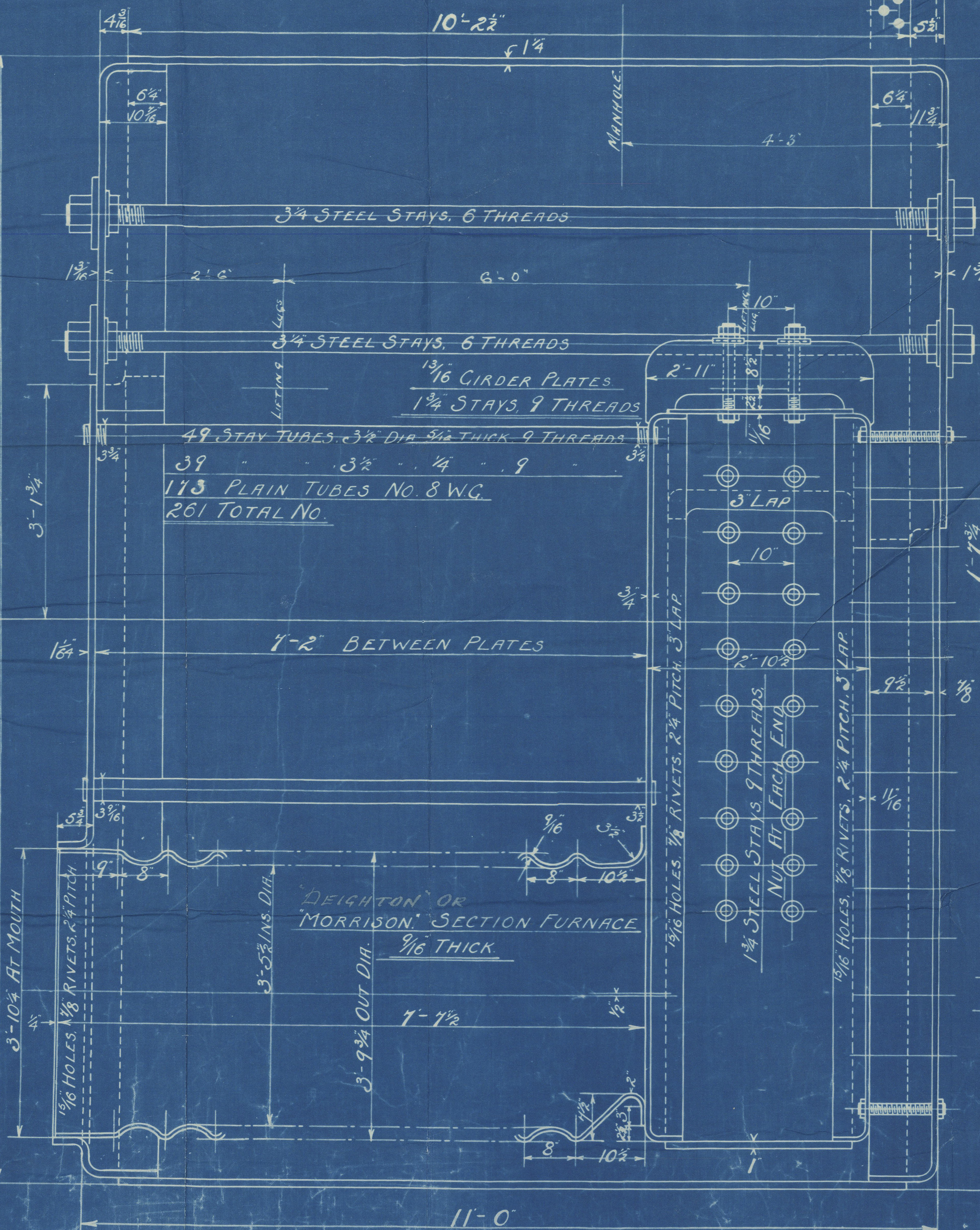
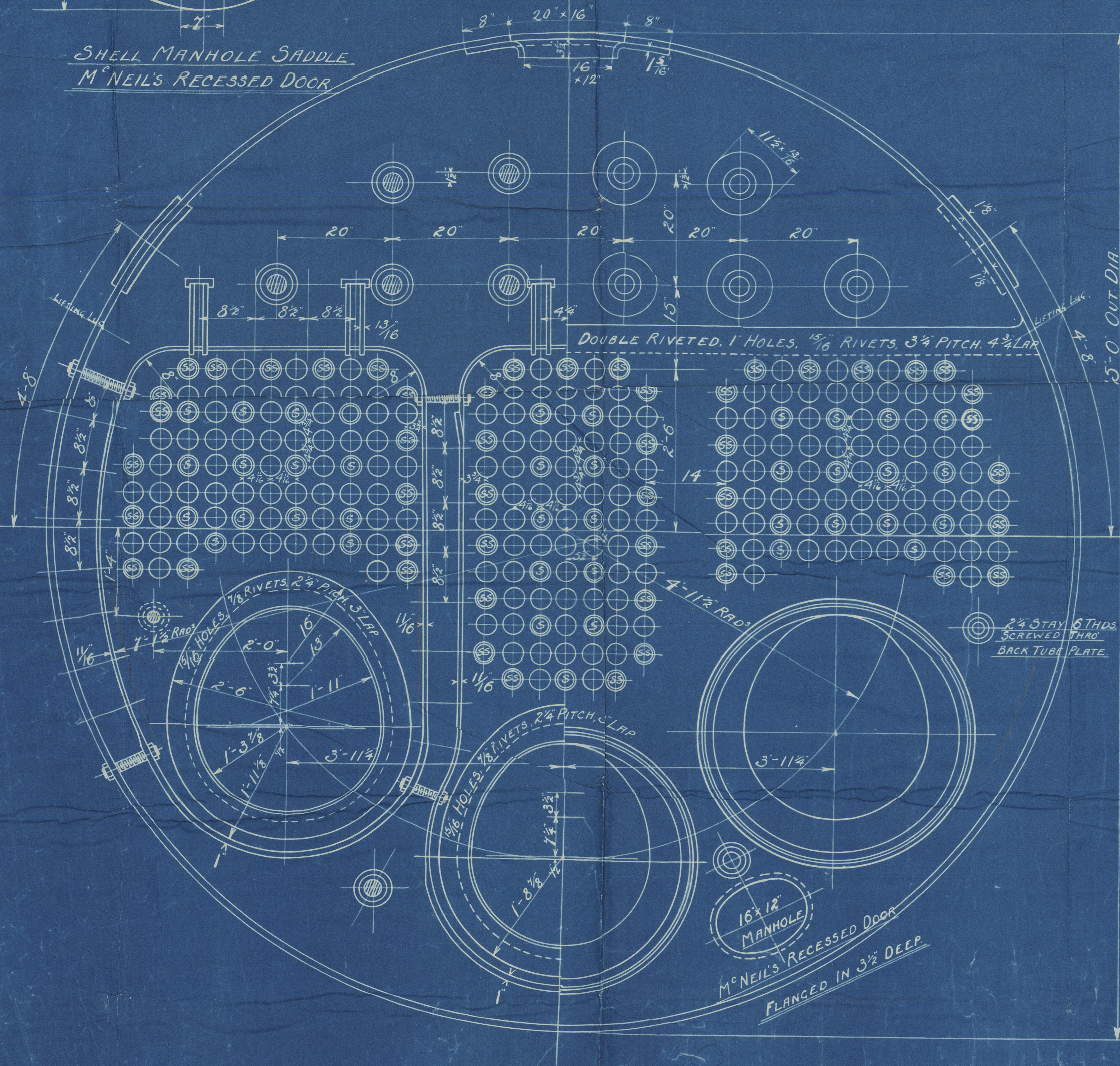
BOILERS NOS. 10777/1078 FOR THAMES TUGS. MESSRS COCHRANE & SONS LTD. YARD NOS 1000-1001
WORKING PRESSURE 180 LBS. PER Sq. INCH
TESTED TO 320 LBS. PER Sq. INCH
GRABTREE & CO'S ENGINE NOS 600 & 601.

SCALE 1" ONE FOOT.

PLATE SECTION 856 1/16
RIVET SECTION 9133 1/16
DOUBLE BUTT STRAPS 1 1/8 THICK



GIRDER PLATES 28 TO 32 TONS T.S.
SHELL PLATES & BUTT STRAPS 28 TO 32 TONS T.S.
ALL OTHER PLATES 26 TO 30 TONS T.S.
LONGITUDINAL STAYS 28 TO 32 TONS T.S.
SCREWED STAYS 26 TO 30 TONS T.S.
TUBES, PLATES, STAYS & RIVETS OF STEEL.



578 all
21/2/29

Approved by Board of Trade 14/1/07.
Approved by Lloyd's 15/10/06.



PALMERS

No. 1127

W.P. 180 LBS^o

Palmer's Boiler 1127.

Report No. 84349

5/5" Borebo"

Robb's yard No 1127

Lth rept No. 17761

© 2021

Lloyd's Register
Foundation