

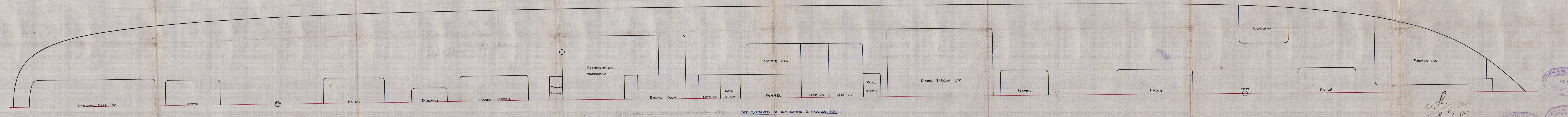
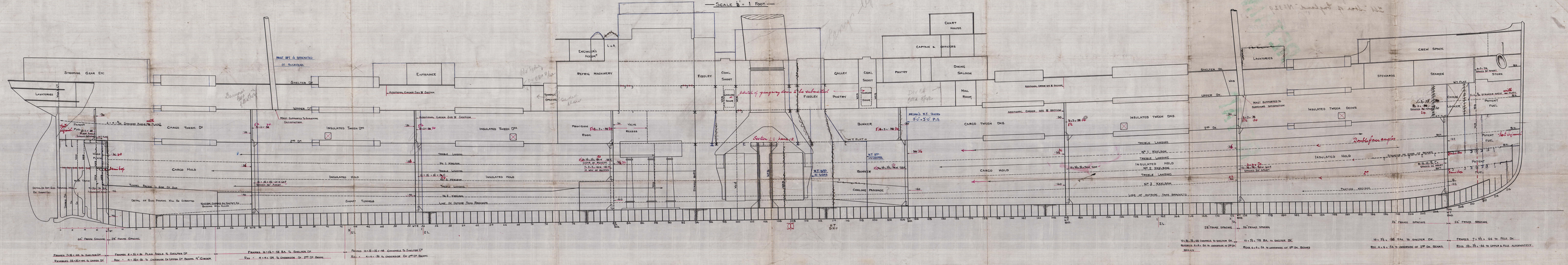
29.5.12
8.6.12
3.7.12
12.7.12
N379 189.12
21.12.12
9.1.13
8.4.13
24.4.13

LONGITUDINAL SECTION OF TWIN SCREW STEAMER—*N° 128+9*

DIMENSIONS 500' x 63' x 36' 6" TO UPPER DECK

TO CLASS 100 A.I. LLOYDS.

SCALE 1" = 1 FOOT



29.5.12
8.6.12
3.7.12
12.7.12
N379 189.12
21.12.12
9.1.13
8.4.13
24.4.13

2019
Lloyd's Register
Foundation

Workman Clark & Co

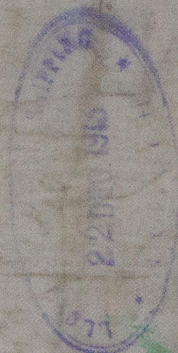
N^o 328 + 329.

Profile

SS. "Star of Victoria" N^o 328

SS. "Star of England" N^o 329

Port Melbourne



DEF

