

429.3

59.23

31.4 to 6537.17

+43 feet

assumed line

Length on

Frame Depth

Ceiling + 20

Peak

Rpt. 12.

# FREEBOARD VERIFICATION FORM FOR STEAMERS.

Port Philadelphia

(When received in London Office.....)

28 NOV 1929

Vessel's Name SS W.W. BRUCE & SABINE SUN

Official No. 211033

No. in Reg. Book 42856

Port of Registry (For Foreign Vessels) New York

Iron or Steel Steel

State whether Classed by Lloyd's Register 100A1

Name of Owners Continental S.S. Co.

Date of Verification 15 November 1929

I have to report that the Freeboard from the centre of disc to the top of the statutory deck line, and the lines in connection therewith, as given below, assigned by the Committee to this vessel, have been correctly marked on the vessel's sides, in accordance with the printed instructions:—

From centre of disc to top of statutory deck line 8 ft. 0 1/2 ins.

From centre of disc to top of statutory deck line }  
at awning or part-awning deck . . . . . } — ft. — ins.

Fresh water line above centre of disc . . . . . 6 1/2 ins.

Indian Summer line above centre of disc . . . . . 6 ins.

Winter line below centre of disc . . . . . 6 ins.

~~Winter North Atlantic line below centre of disc~~ — ins.

Distance between the top of statutory deck line on vessel's side and the intersection of the continuation of upper side of wood or iron deck with the vessel's side }  
Steel at ~~main, spar or upper dk.~~ 1 3/4 ins.  
at ~~awning or pt. awning dk.~~ — ins.

NOTE.—It should be clearly shown whether the statutory deck line is set off from a wood or iron deck.

The statutory deck line is set off from steel deck

R. Roseworthy

Surveyor.

(To be filled in London Office.)

Statement No. 25592 Date of Committee's Minute 5.2.18

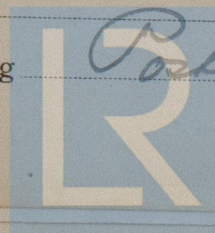
Particulars for Record in Register Book {  
Moulded Depth . . . . . 33 ft. 3 ins.  
Freeboard . . . . . 8 ft. 0 1/2 ins.  
Corresponding Draught 25 ft. 7 ins.

Freeboards compared and found correct by W.W. date 28.11.29

Is fee paid? A Form for Certificate

Instructions 28/11/29 date

Certificate written 28/11/29 Noted for posting



© 2020

Lloyd's Register  
Foundation

159

8'-0 1/2"  
6 1/2"  
6'