

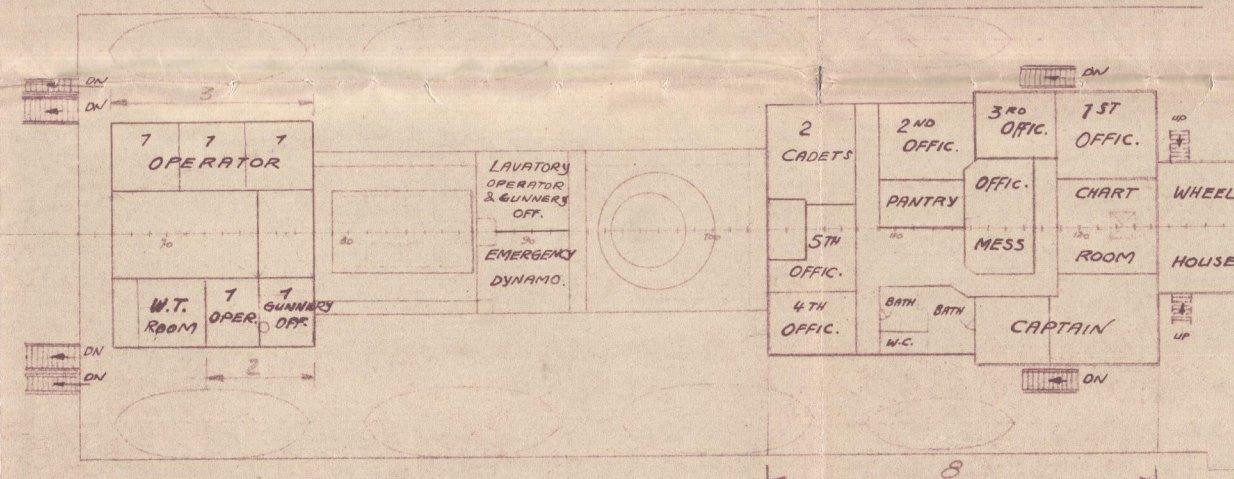
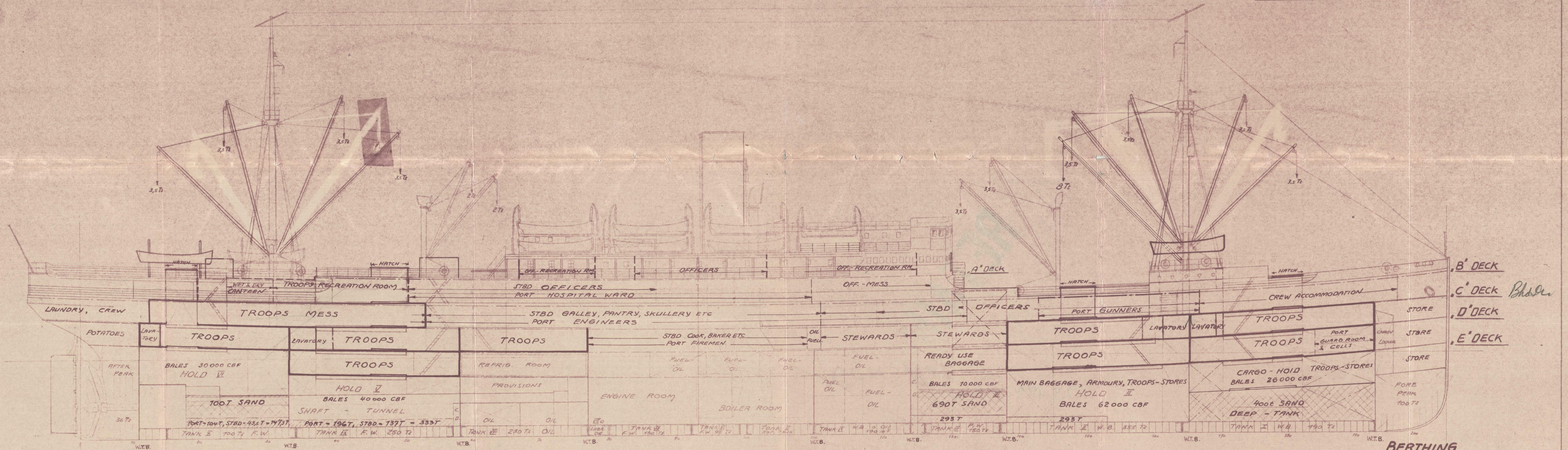
"GENERAL SAN MARTIN"

GENERAL ARRANGEMENT

DEUTSCHE WERFT
HAMBURG

SCALE: 1:200

DIMENSIONS: 472'-8" x 60'-6" x 37'-0" (C-Deck)



IN CABINS = 222
IN STANDEES = 7575
TROOPS - TOTAL = 7737
CREW = 756
TOTAL = 1893
GUNNERS = 34
GRAND-TOTAL = 1927

FUEL OIL = 2400 TS
FRESHWATER = 1400 TS
GARGO HOLD = 168000 CBF
REFRIG. ROOM = 11500 CBF
PROV. ROOM = 11600 CBF

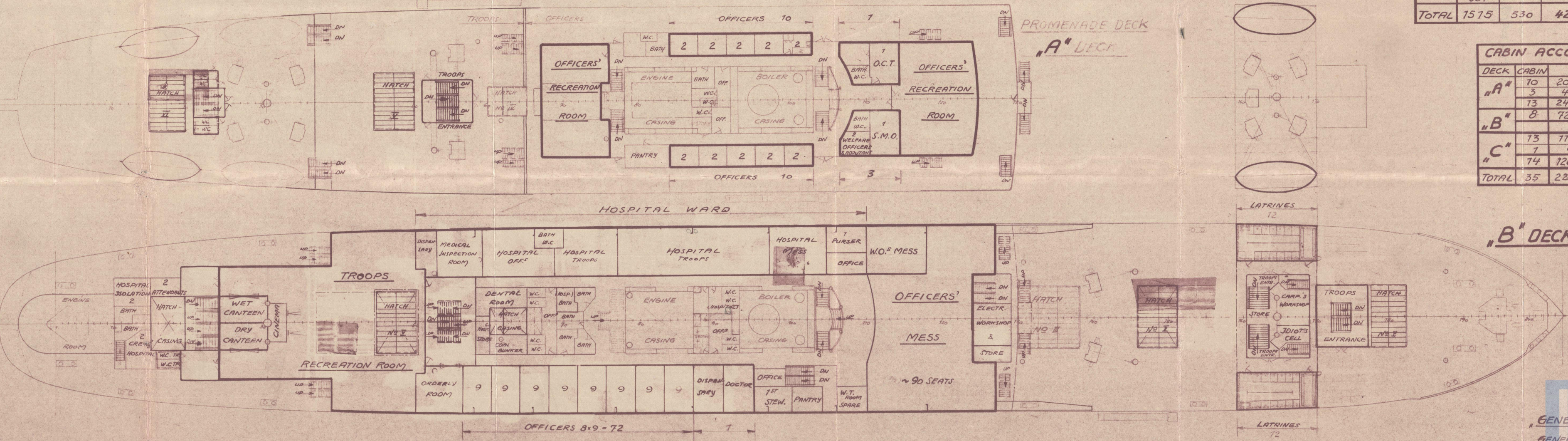
BALLAST: SOLID BALLAST = 1067 T, SAND BALLAST = 1190 T. TOTAL = 2257 T.

BERTHING CAPACITY SUMMARY

DECK	STANDEE BERTHS	MESS SEATS	SHOWERS	W.B.S.	W.C.S.
"A"					4
"B"					26
"C"		530			6
"D"	744	6	18	70	
	234	74	32	70	
	177	5	17	7	
	180	72	25	12	
	99	3	6	5	
	834				
"E"	153				
	294				
	234				
	687				
TOTAL	1515	530	42	92	80

CABIN ACCOMMODATION

DECK	CABIN	OFFICERS
"A"	10	20 OFFICERS
	3	4 OFFICERS
	73	24 OFFICERS
"B"	8	72 OFFICERS
	73	117 OFFICERS
"C"	1	9 R.A.M.C.
	14	126 OFFICERS
TOTAL	35	222 OFFICERS



"B" DECK

F56
14/8.45

GENERAL SAN MARTIN
GENERAL ARRANGEMENT

14. Aug. 1945

W1000-0215

DEUTSCHE WERFT
HAMBURG
SEITE 10
R. 71

GENERAL ARRANGEMENT

Copyright © 2020 Lloyd's Register Foundation

General San Martin

W1000-0.215



© 2020

Lloyd's Register
Foundation

GENERAL SAN
MARTIN

N.W. E. rept 56.

GEN. AAG.

8

W/000 - 0215



© 2020

Lloyd's Register
Foundation