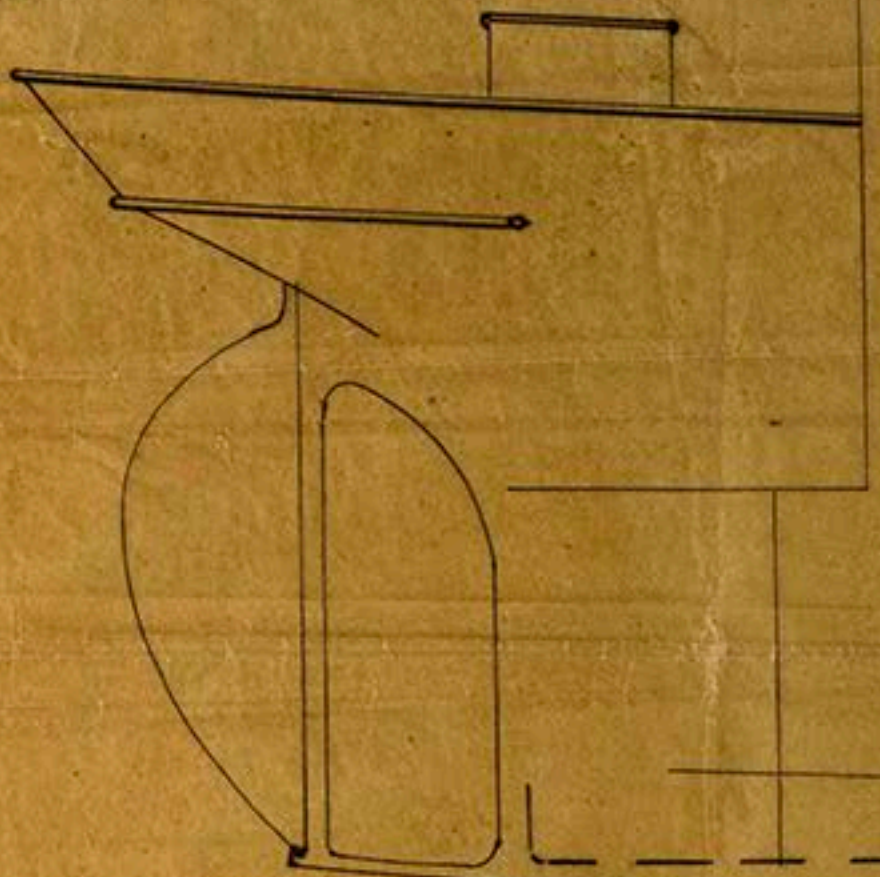


19. 11. 92

E

Scale $\frac{1}{4}'' = 1' 0''$



Long 15' 9"

Stringer plates $18 \times \frac{1}{20}$
at sides
" fore and aft $12 \times \frac{1}{2}$
Stringer plates L bars
 $2 \frac{1}{2} \times 2 \frac{1}{2} \times \frac{5}{16}$

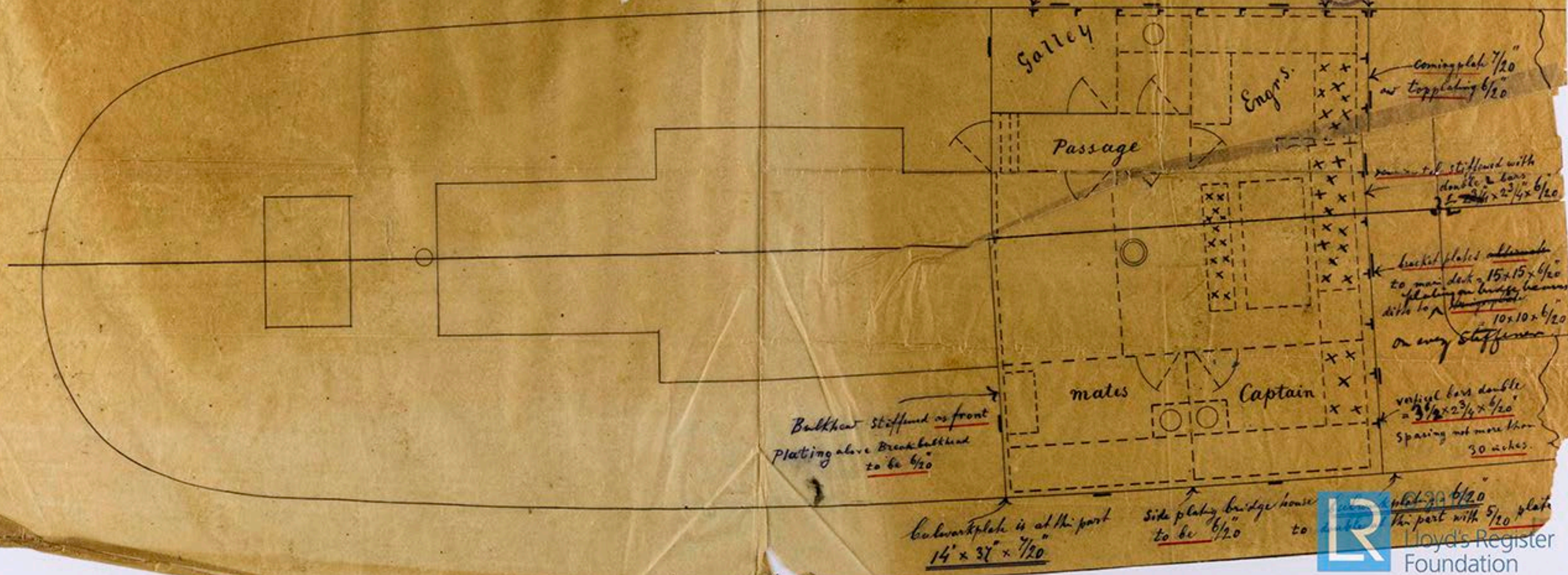
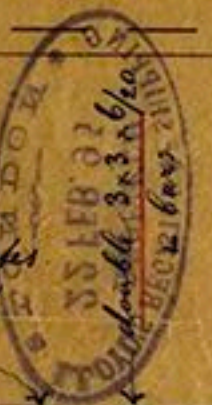
7' 0" high from
main deck

Beams $4 \times 2 \frac{1}{2} \times \frac{5}{16}$ to alternate frame
supported by 2 pillars
Planks $3 \times 5 \frac{1}{2}$
2 tie plates $8 \times \frac{1}{10}$ connected to stringer plates

$3 \times 3 \times \frac{1}{20}$

Approved plan of modification by the Committee
of a bridge deck on basis of the plan A approved 10 May 189 -

Frames at sides $3 \times 2 \frac{1}{2} \times \frac{5}{16}$ spacing 21" connected to beams & stringer plates
by bracket plates $15 \times 15 \times \frac{1}{20}$
15 15



Galley

Eng'rs

Passage

mates

Captain

Bulkhead stiffened as front
Plating above Bulkhead
to be $\frac{1}{20}$

Corner plate $\frac{1}{20}$
or top plating $\frac{1}{20}$

main deck stiffened with
double L bars
 $2 \frac{1}{2} \times 2 \frac{1}{4} \times \frac{1}{20}$

bracket plates alternate
to main deck $15 \times 15 \times \frac{1}{20}$
plating on bridge beams
ditto to $10 \times 10 \times \frac{1}{20}$
on every stiffener

vertical bars double
 $3 \frac{1}{2} \times 2 \frac{3}{4} \times \frac{1}{20}$
spacing not more than
30 inches

Bulwark plate is at the part
 $14' \times 37' \times \frac{1}{20}$

Side plating bridge house
to be $\frac{1}{20}$ to double the part with $\frac{5}{16}$ plate

