

APR 12.5.96

BOILER. CONTRACT NO. 457.

Steel Boilers. Nos 937 & 938 (Austrian Lloyd)

for S.S. No 49.

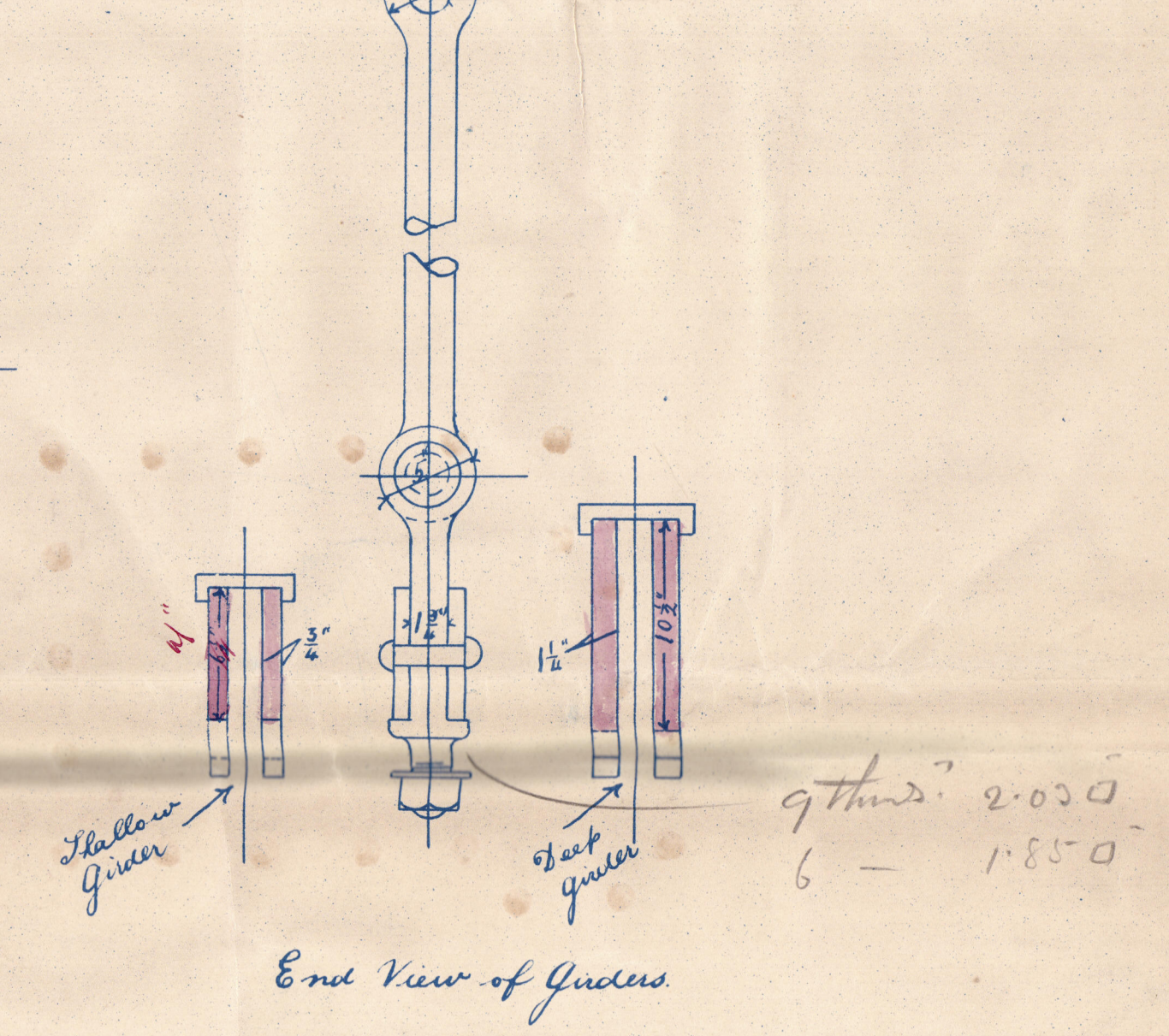
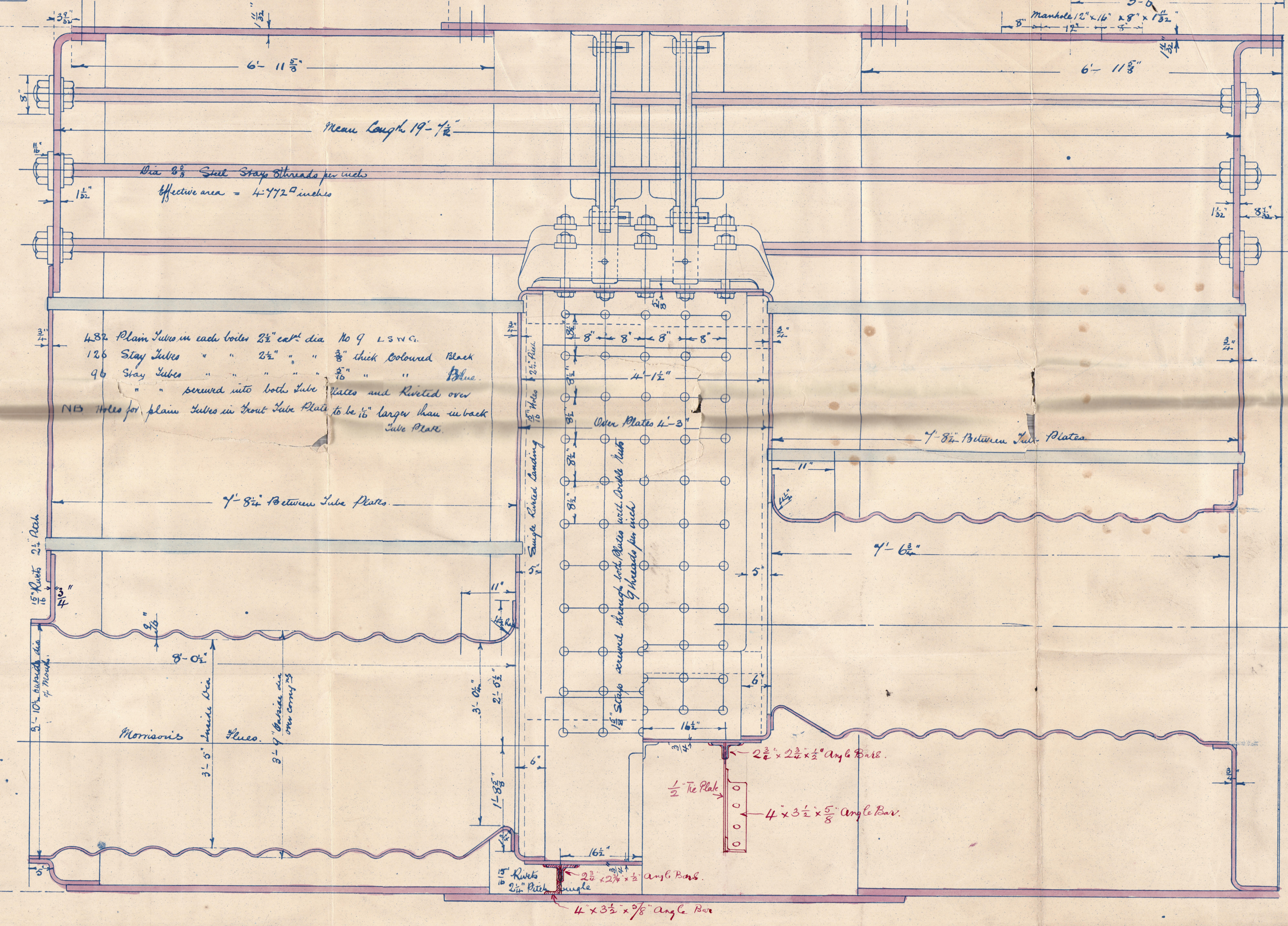
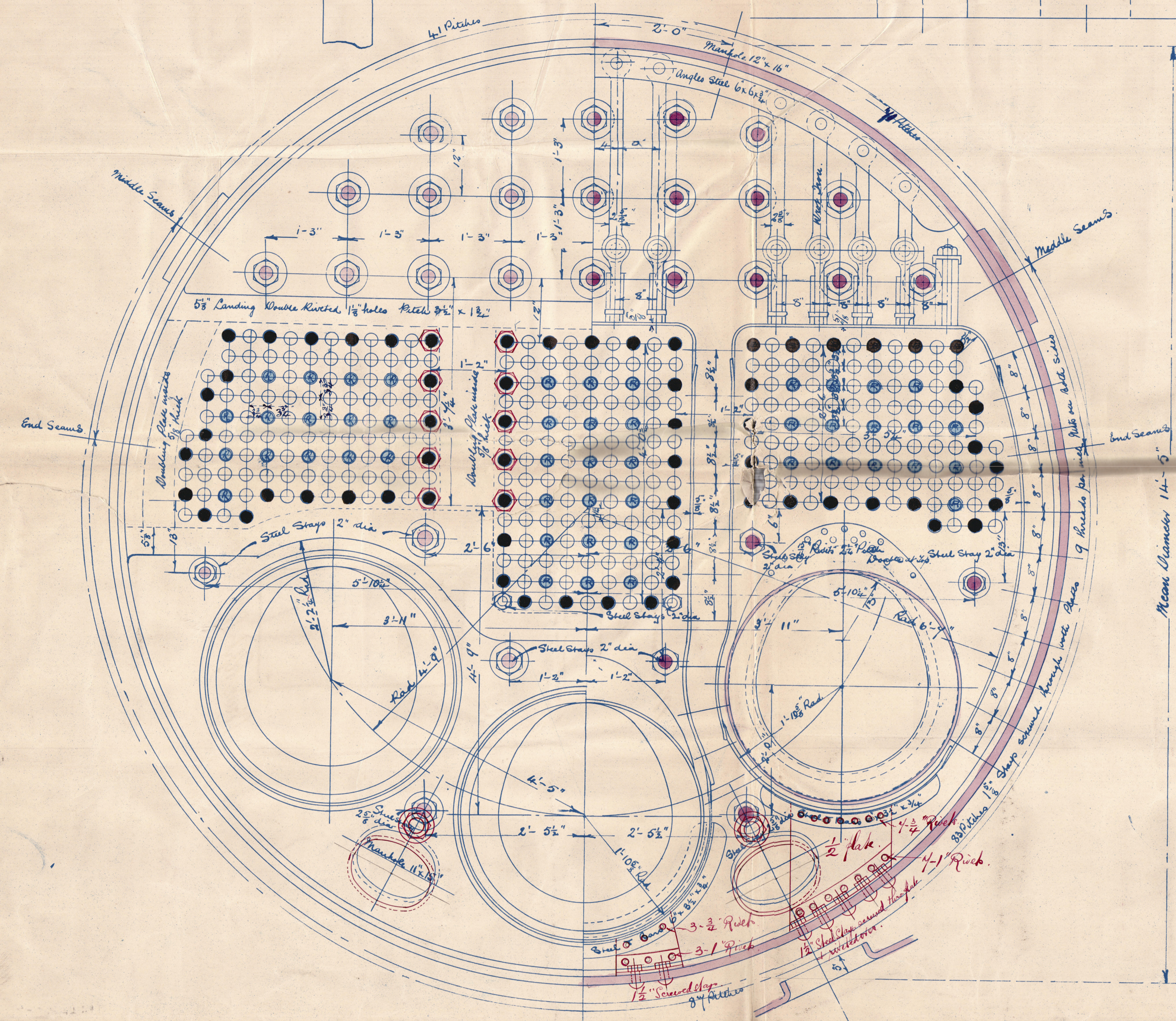
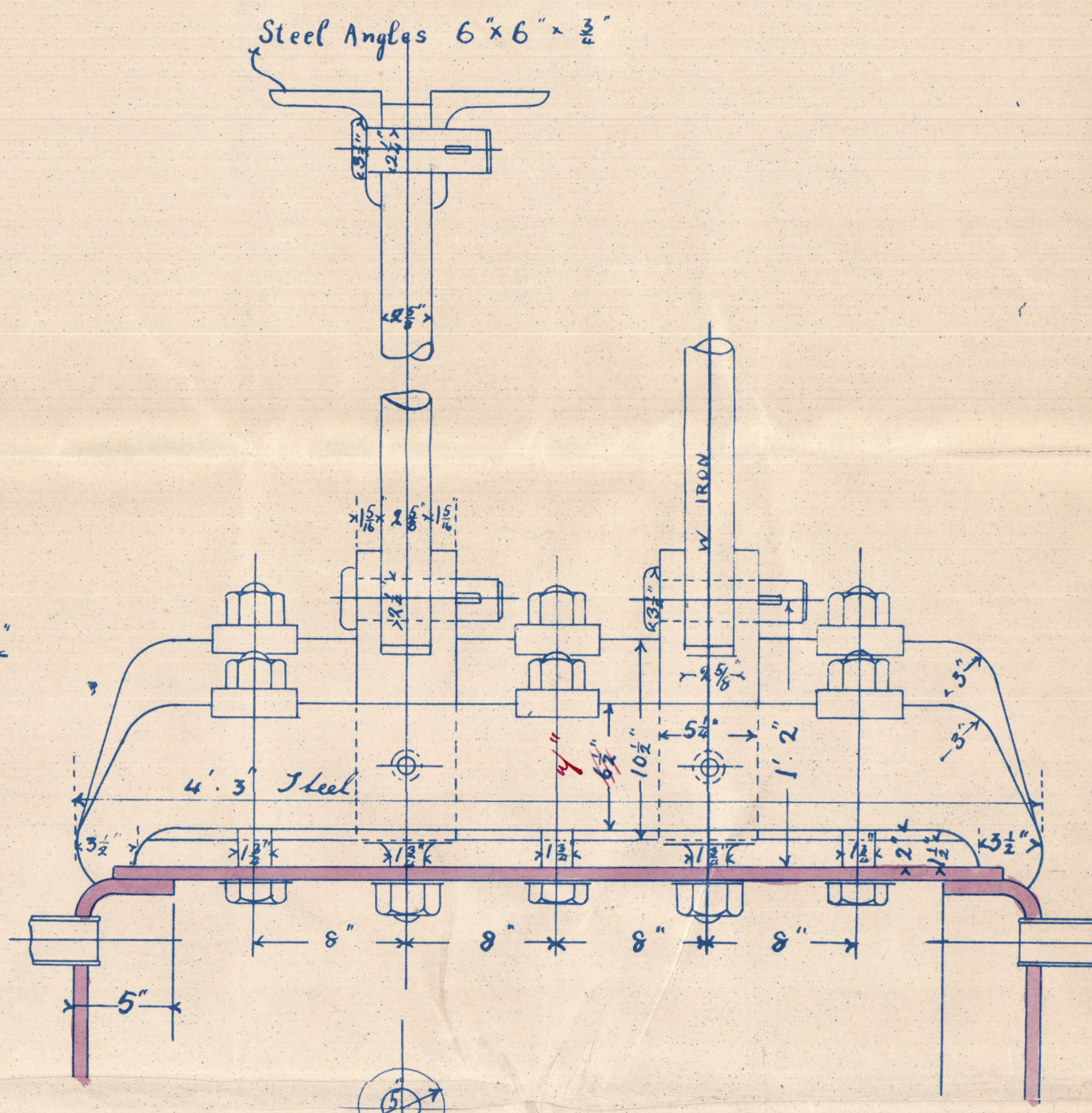
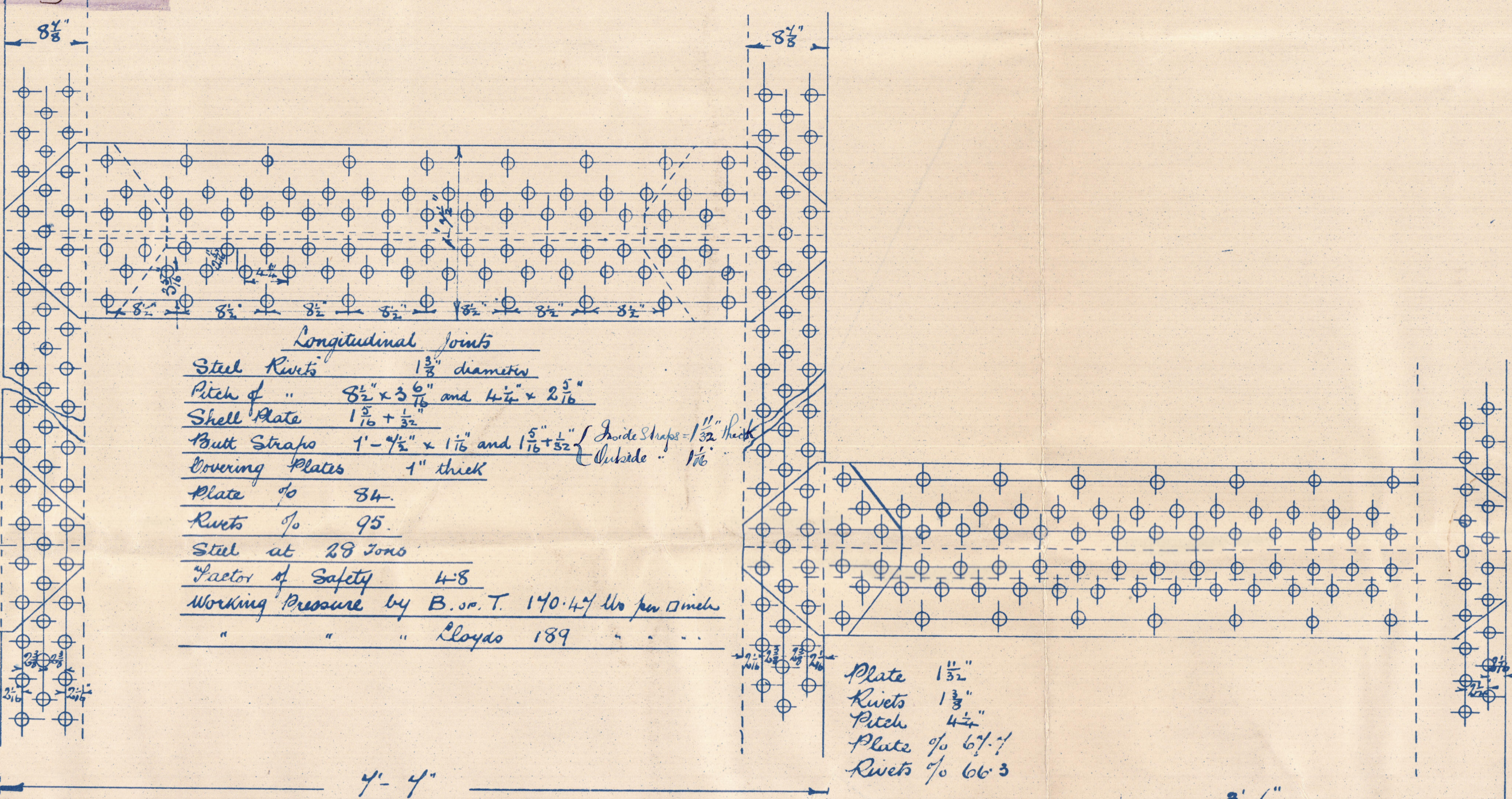
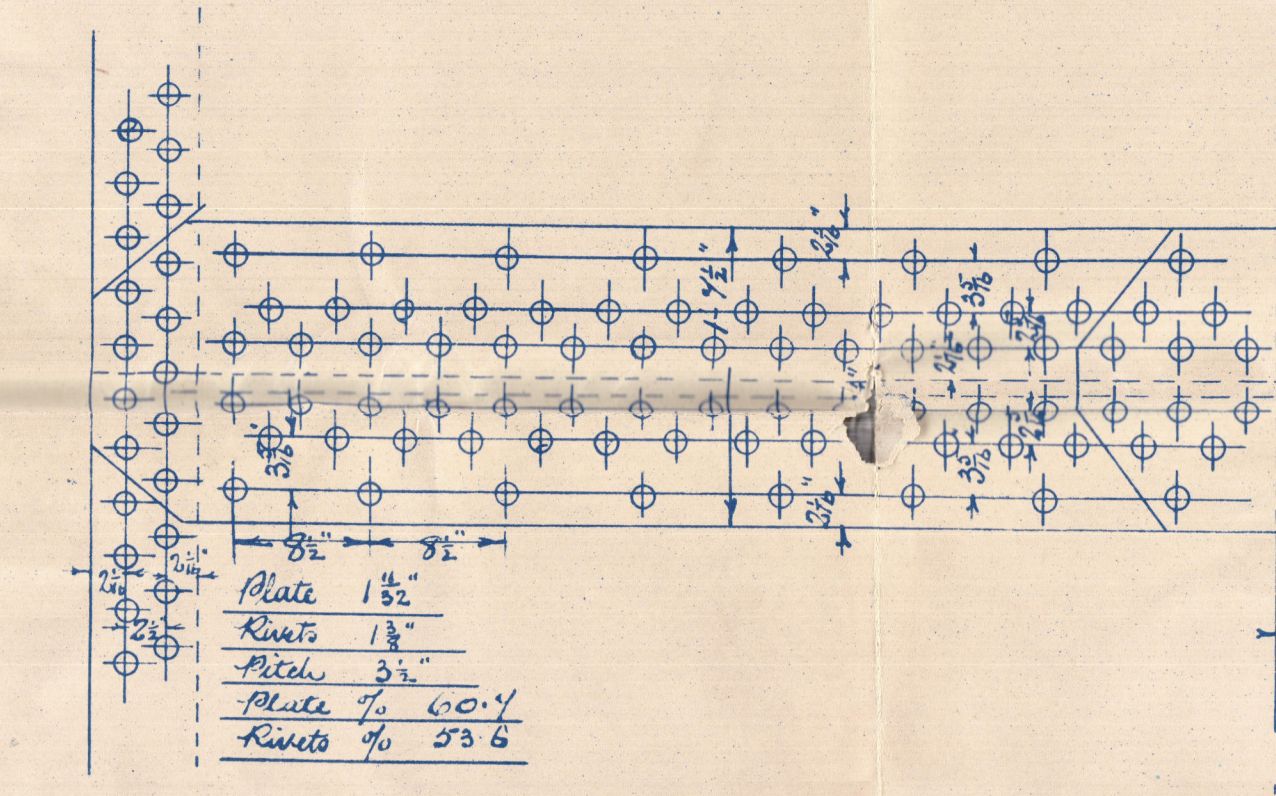
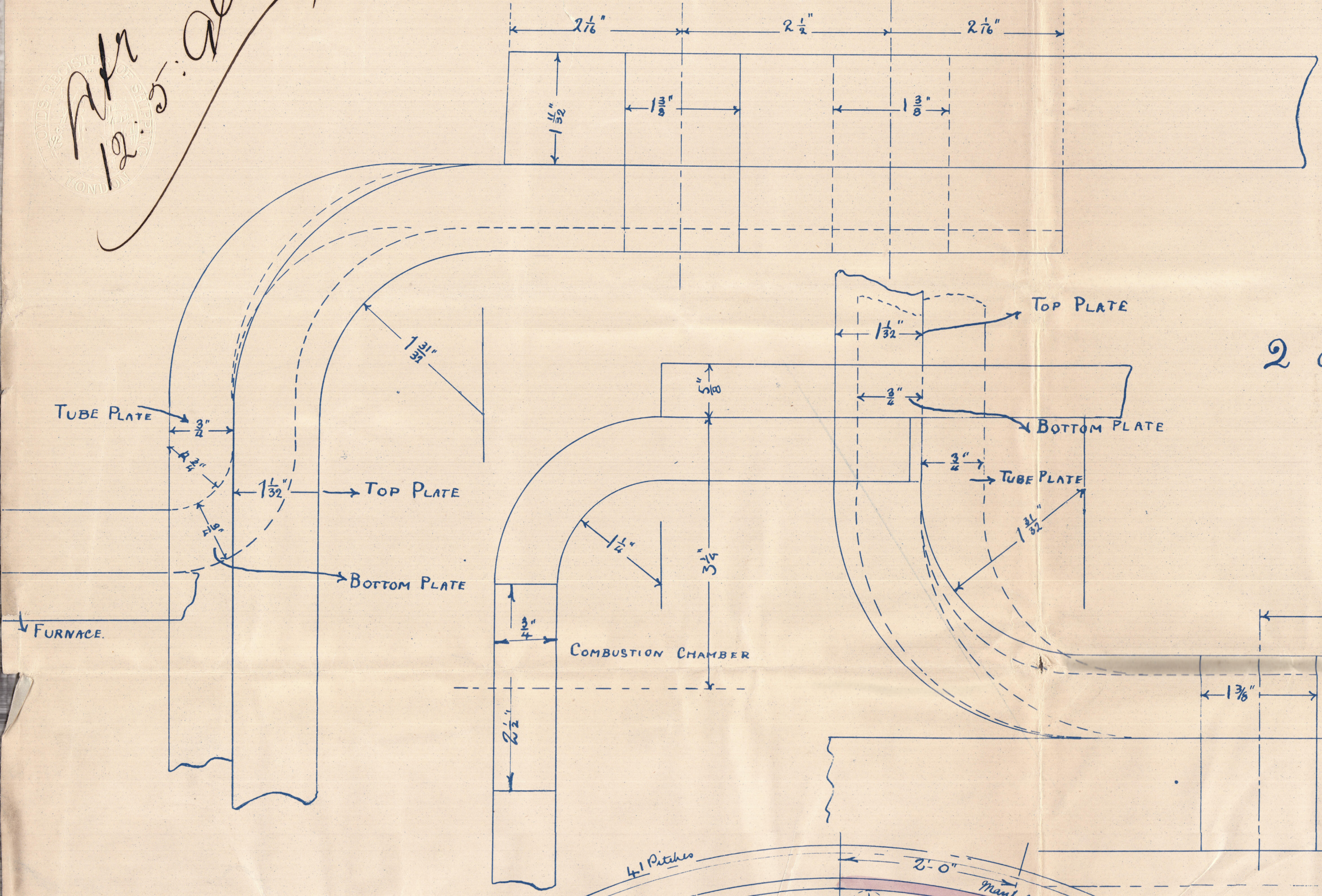
Amended to Red. May 18.96

THE WALLSEND
SHIPWAY & ENGINEERING CO. LTD
NEWCASTLE-UPON-TYNE.
No. 3462-DATE May 7-96

GRATE & HEATING SURFACE.

HEATING SURFACE OF TUBES	7040.00
" " FURNACES	521.27
" " COMBUSTION CHAMBERS	515.32
TOTAL HEATING SURFACE	8076.59 SQUARE FEET
TOTAL GRATE AREA	220 SQUARE FEET
LENGTH OF FIRE BARS	5'-3"
WORKING PRESSURE	170 LBS per sq INCH

2 OFF THUS.



11.5.96



Walsand Shipping Co

45-7

Austron Lloyd's 49

2 Main Boilers

No
LLoyds TEST
<u>340 lbs.</u>

Wals Rpt No 34065.

111155-0007

111155-0007 1/2



© 2020

Lloyd's Register
Foundation

THE WALLSEND SLIPWAY AND ENGINEERING CO., LD.

Enclosure to

Messrs Lloyds Surveyors,
NEWCASTLE on TYNE.

21/5/96.

TR 1155-0007